

SUPPLEMENTARY MATERIAL

Table S1

The 12 G3 samples overlapping between this study and those published in Kinkar *et al.* (2017). Note that in this study ~240 additional basepairs (146 bp of the *cox3* gene; 8 bp tRNA-His and 86 bp *nad6*) were sequenced.

Lab code in	Haplotype in this study	Haplotype in Kinkar <i>et al.</i> (2017)
Tartu	(11 675 bp)	(11 433 bp)
4902	FRA2	FRA1
6565	FRA3	FRA2
P8	SPA14	SPA4
P11	SPA15	SPA3
P18	SPA12	SPA2
S84	TUR41	TUR2
S127	TUR42	TUR3
S131	TUR37	TUR1
IR37	IRA22	IRA1
IR38	IRA23	IRA3
IR43	IRA24	IRA2
MI3	IND2	IND1

Table S2

Data for the 39 *Echinococcus granulosus* sensu stricto G3 isolates sequenced in this study.

Lab code in	Haplotype	Host	Origin	GenBank no.
Tartu				
Fin13	FIN2	Human	Finland (Eastern Europe)	MG682511
HB10	BUL1	Human	Bulgaria	MG682513
ALB1	ALB3	Cattle	Albania, Lushnje	MG682514
B12	ROM3	Human	Romania	MG682516
V13	ITA10	Sheep	Italy, Emilia Romagna	MG682518
V7	ITA11	Sheep	Italy, Sicily	MG682517
4902	FRA2	Sheep	France, Sisteron	MG682519
4895	FRA2	Sheep	France, Sisteron	MG682519
6565	FRA3	Sheep	France, Carpentras	MG682520
VA5	ITA12	Sheep	Italy, Sardinia	MG682521
VA8	ITA13	Sheep	Italy, Sardinia	MG682522
VA18	GRE3	Sheep	Greece	MG682523
VA19	GRE4	Sheep	Greece	MG682524
P5	SPA13	Sheep	Spain, Centre	MG682525
P8	SPA14	Sheep	Spain, Centre	MG682526
P11	SPA15	Sheep	Spain, Centre	MG682527
P17	SPA12	Sheep	Spain, Centre	MG682528
P18	SPA12	Sheep	Spain, Centre	MG682528
P19	SPA12	Sheep	Spain, Centre	MG682528

P63	SPA16	Human	Spain, Soria	MG682529
S52	TUR38	Cattle	Turkey, Erzurum	MG682530
S75	TUR39	Cattle	Turkey, Erzurum	MG682531
S82	TUR40	Cattle	Turkey, Erzurum	MG682532
S84	TUR41	Cattle	Turkey, Erzurum	MG682533
S127	TUR42	Sheep	Turkey, Elazig	MG682534
S131	TUR37	Sheep	Turkey, Elazig	MG682535
S137	TUR37	Sheep	Turkey, Elazig	MG682535
S145	TUR43	Sheep	Turkey, Elazig	MG682536
ZA41	ALG13	Human	Algeria, El Oued	MG682544
N3	IRA20	Sheep	Iran, Isfahan	MG682515
IR28	IRA21	Sheep	Iran, Tehran	MG682537
IR37	IRA22	Camel	Iran, Isfahan	MG682538
IR38	IRA23	Camel	Iran, Isfahan	MG682539
IR43	IRA24	Camel	Iran, Isfahan	MG682540
IR44	IRA25	Camel	Iran, Isfahan	MG682541
MI3	IND2	Buffalo	India	MG682542
MI6	IND3	Buffalo	India	MG682512
MI21	IND4	Buffalo	India	MG682543
MI22	IND4	Buffalo	India	MG682543

Phylogenetic network of human samples of genotypes G1 and G3

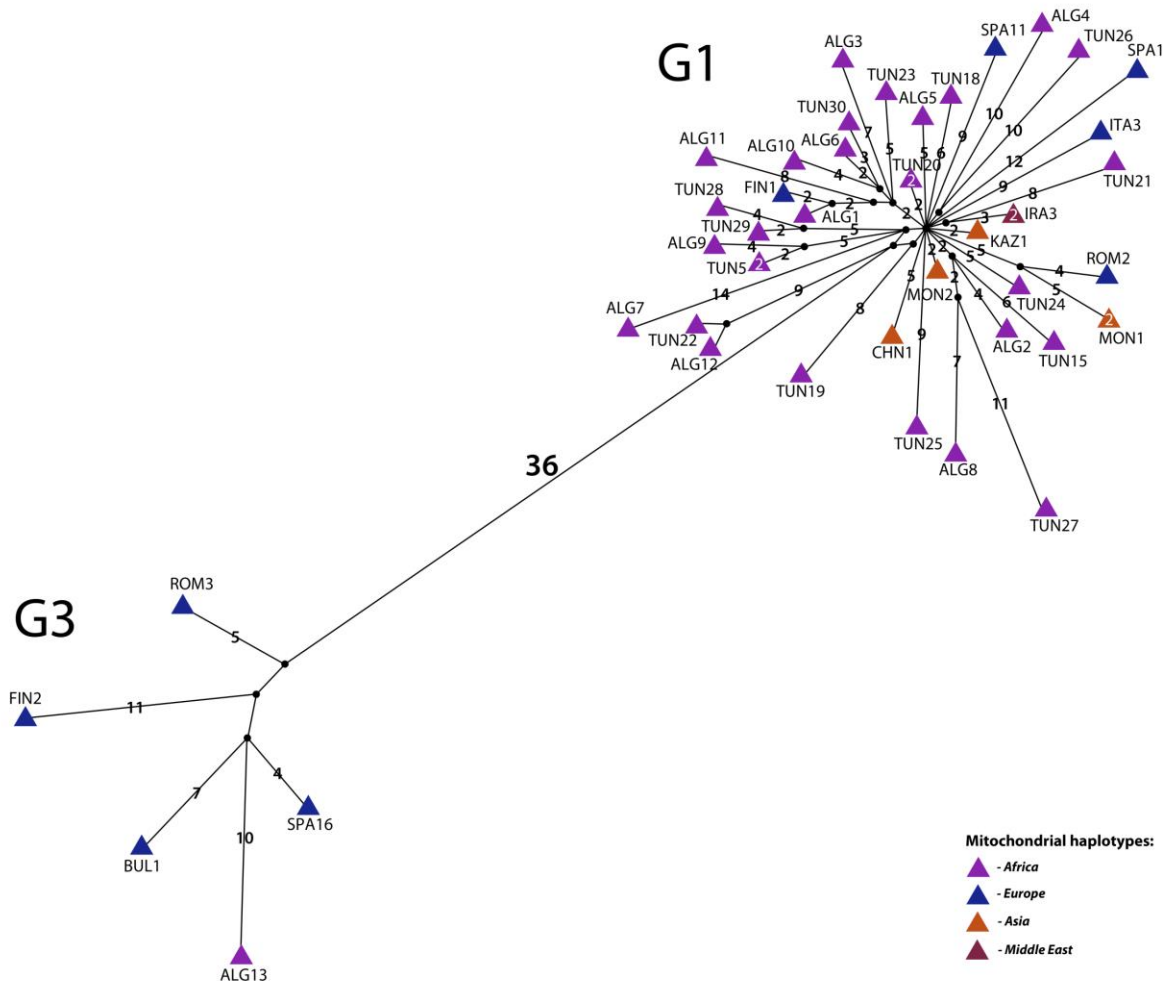


Figure S1. Phylogenetic network of *Echinococcus granulosus* sensu stricto G1 and G3 human samples. Triangles represent haplotypes. Haplotype colours represent different geographical regions: purple – Africa, orange – Asia, blue – Europe and dark red – the Middle East. Haplotype names represent different geographical origins: ALG – Algeria, BUL – Bulgaria, CHN – China, FIN – Finland, IRA – Iran, ITA – Italy, KAZ – Kazakhstan, MON – Mongolia, ROM – Romania, SPA – Spain, TUN – Tunisia. The numbers inside the triangles indicate the frequency of the haplotype. Numbers on the lines represent the number of mutations (single mutations are not marked with a number).