

Supplementary Information

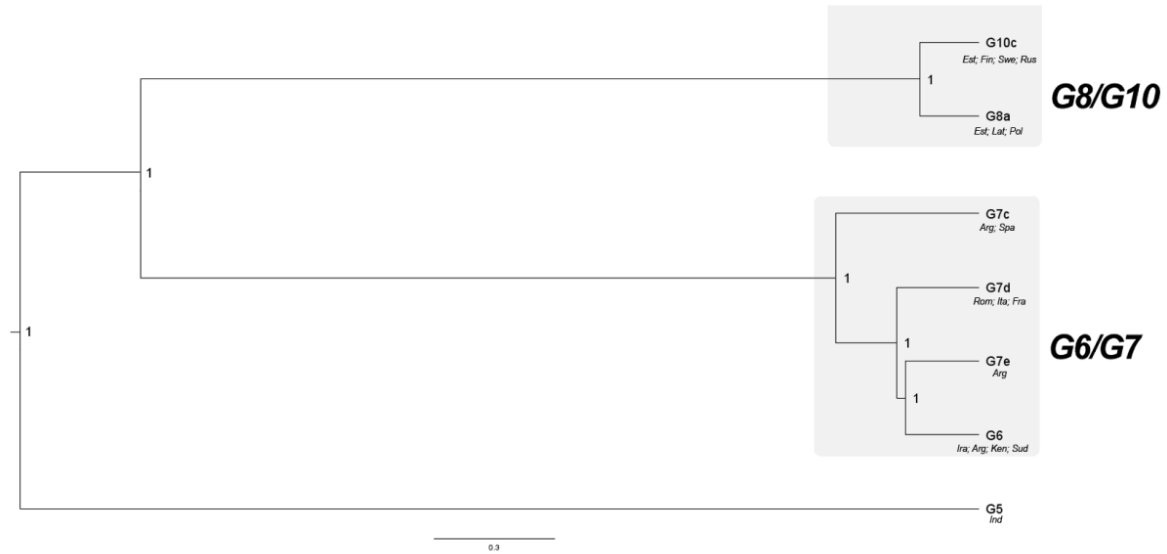


Figure S1. Bayesian phylogeny of genotypes G5, G6, G7, G8 and G10, based on sequences of 6 nuclear loci (Dataset 2; 42 samples). Posterior probability values are depicted above branches. For further details on the included samples see Table 1.

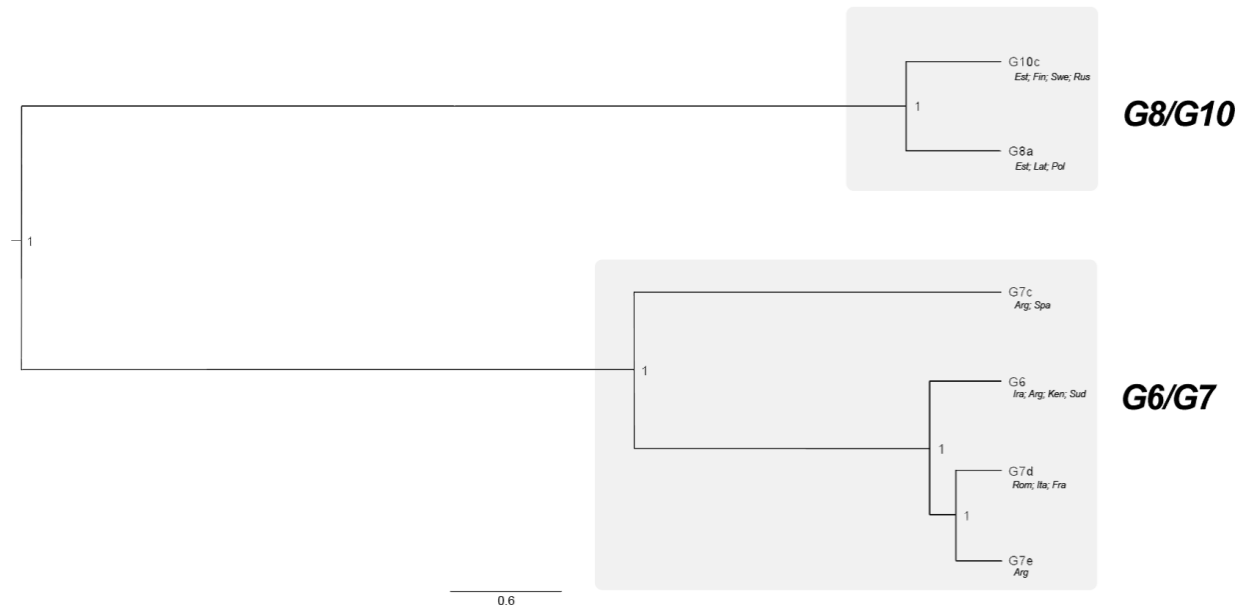


Figure S2. Bayesian phylogeny of genotypes G6, G7, G8 and G10, based on sequences of 6 nuclear loci. Only the samples with all 6 successfully amplified nuclear loci were included (n=30). Posterior probability values are depicted above branches. For further details on the included samples see Table 1.

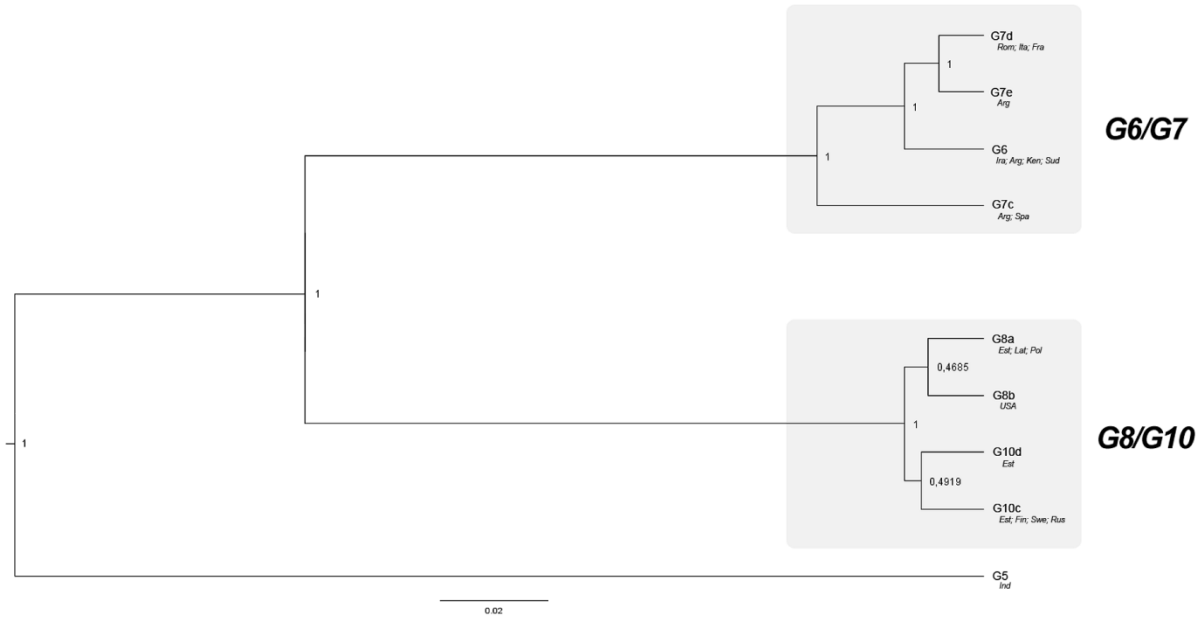


Figure S3. Bayesian phylogeny of genotypes G5, G6, G7, G8 and G10, based on sequences of 6 nuclear loci. Only the samples with all 6 successfully amplified nuclear loci were included (n=32). Posterior probability values are depicted above branches. For further details on the included samples see Table 1.