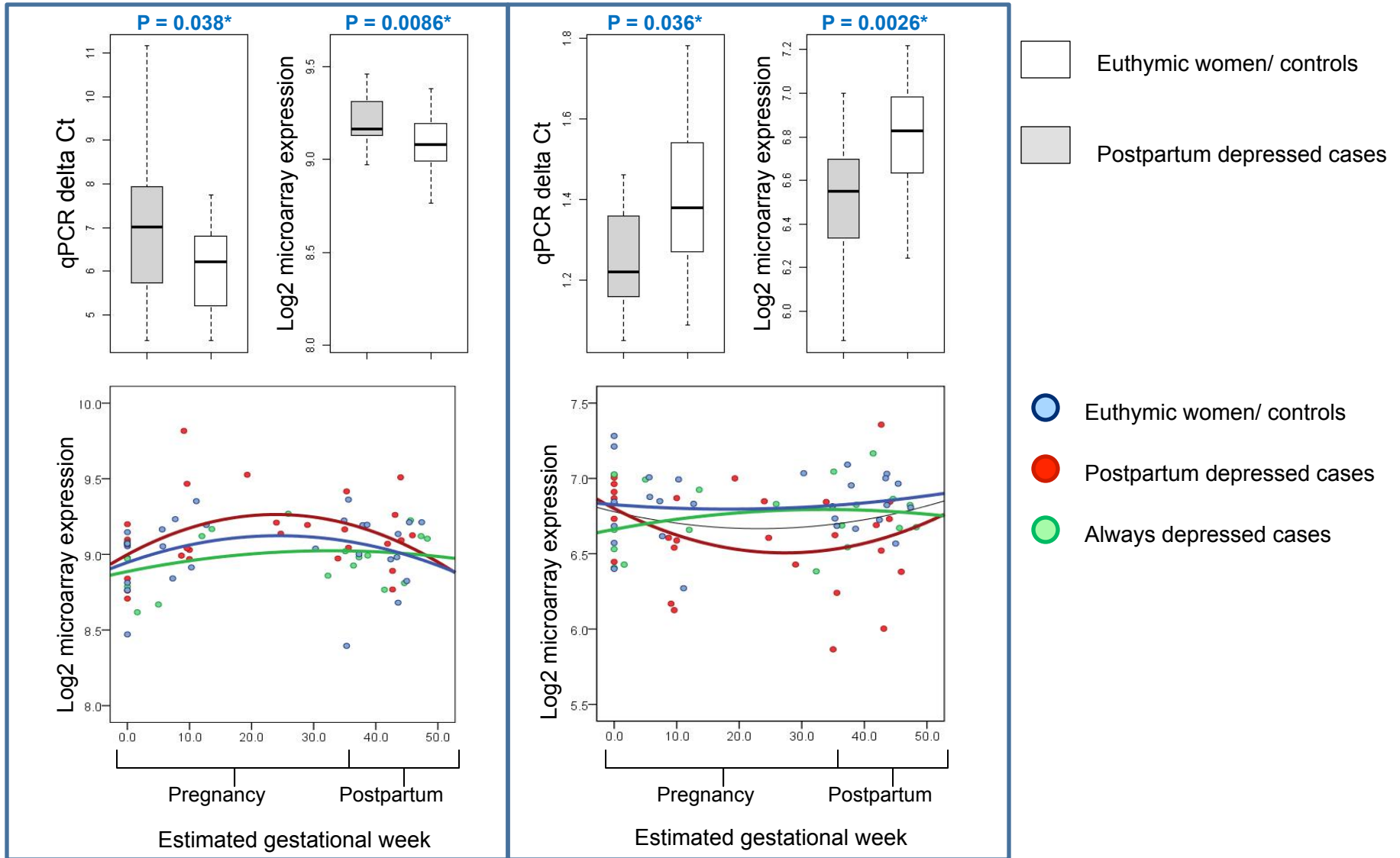


## SP1

## TAF6



### Supplementary Figure 1 - Transcripts within estrogen signaling pathways:

Functional annotation revealed an overrepresentation of transcripts implicated in the estrogen signaling pathway (SP1 and TAF6) among the 3rd trimester biomarker panel. Expression differences between euthymic women (n=28) and PPD women (n=17) for SP1 and TAF6 are indicated. Results for the transcripts were validated using qPCR.