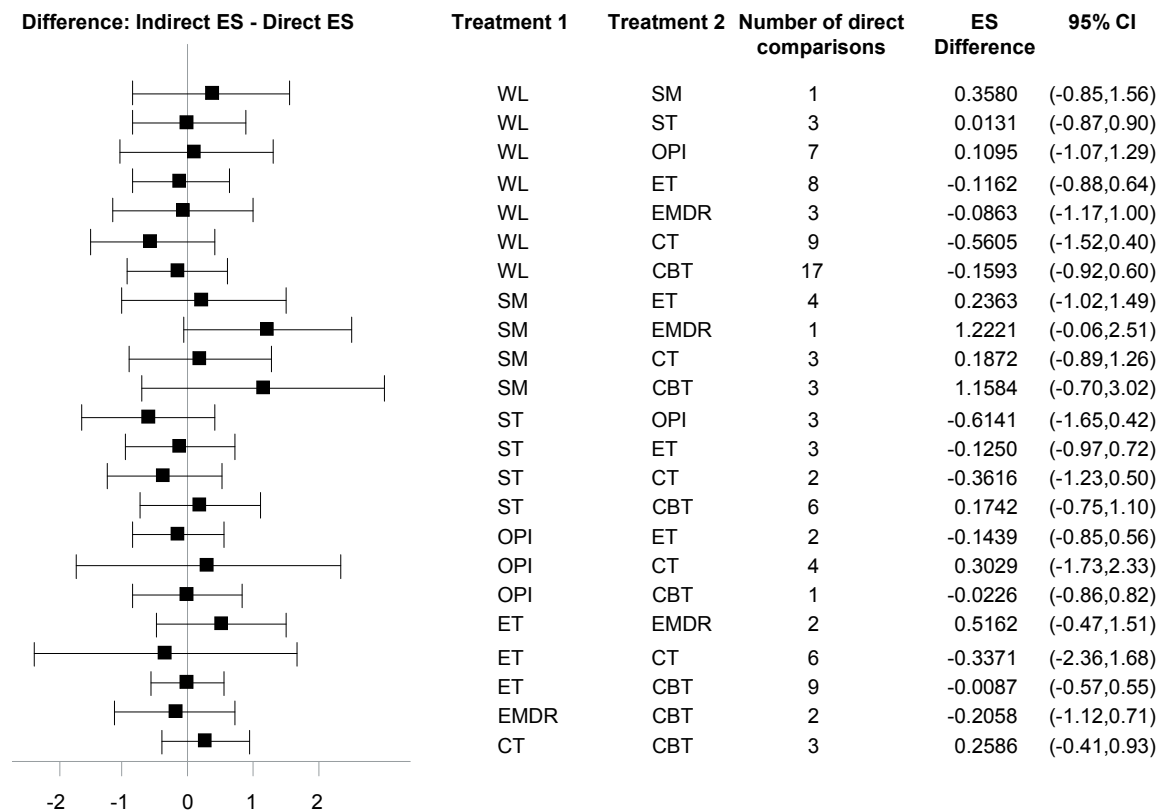


## Web-appendix 5: Network inconsistency.



**Web-appendix 5:** Network inconsistency is presumed if direct and indirect estimates differ substantially. CBT, cognitive behavioural therapy; CT, cognitive therapy; EMDR, eye movement desensitization and reprocessing; ET, exposure therapy; OPI, other psychological intervention; SM, stress management; ST, supportive therapies; WL, wait-list.