

Genetic heterogeneity in self-reported depressive symptoms identified through genetic analyses of the PHQ-9

Jackson G. Thorp, Andries T. Marees, Jue-Sheng Ong, Jiyuan An, Stuart MacGregor, Eske M. Derks

Supplementary Figures 1 – 13

Figure 1. Flow diagram of exclusions / inclusions leading to final sample size

Figure 2. Anhedonia Manhattan and QQ plots

Figure 3. Depressed mood Manhattan and QQ plots

Figure 4. Sleep problems Manhattan and QQ plots

Figure 5. Fatigue Manhattan and QQ plots

Figure 6. Appetite changes Manhattan and QQ plots

Figure 7. Low self-esteem Manhattan and QQ plots

Figure 8. Concentration problems Manhattan and QQ plots

Figure 9. Psychomotor changes Manhattan and QQ plots

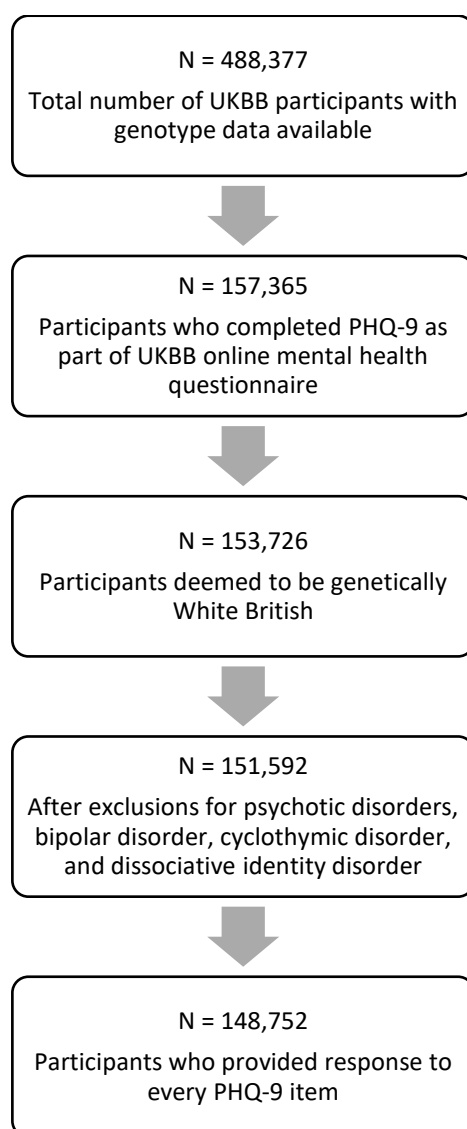
Figure 10. Suicidal ideation Manhattan and QQ plots

Figure 11. Sum-score Manhattan and QQ plots

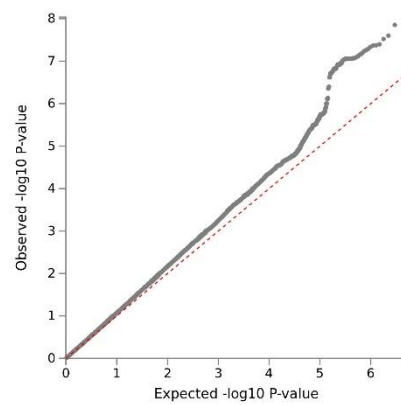
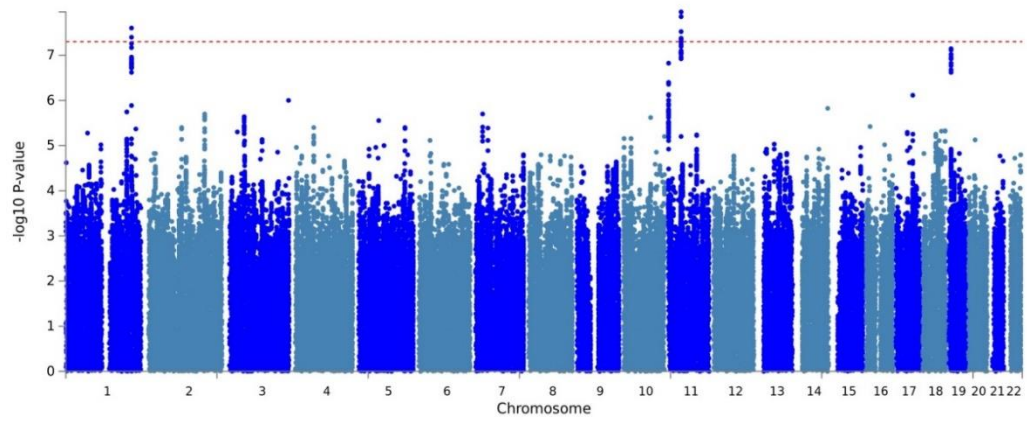
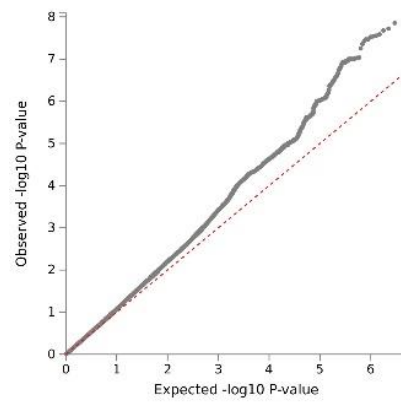
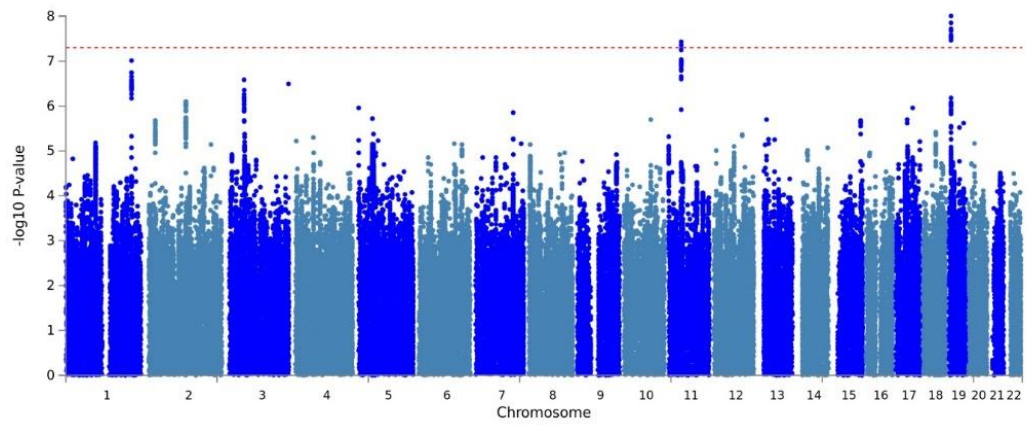
Figure 12. Comparison of inter-item genetic correlations between binary items and ordinal items

Figure 13. Scatterplots of genetic correlations vs. phenotypic correlations for both ordinal and binary items

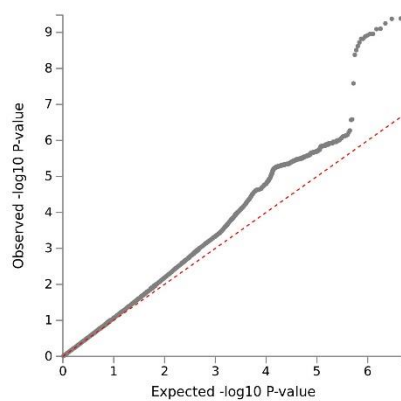
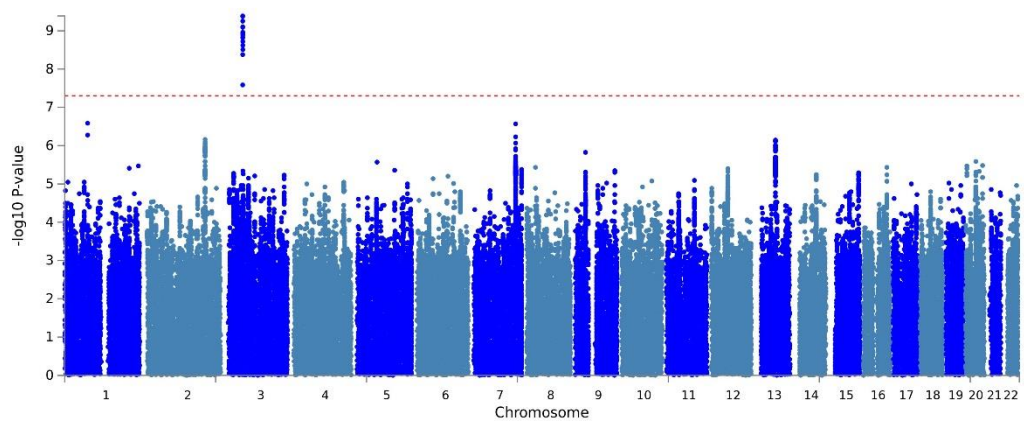
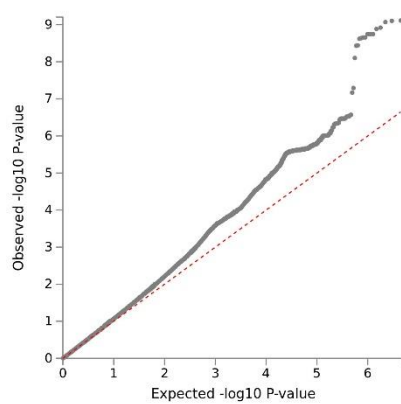
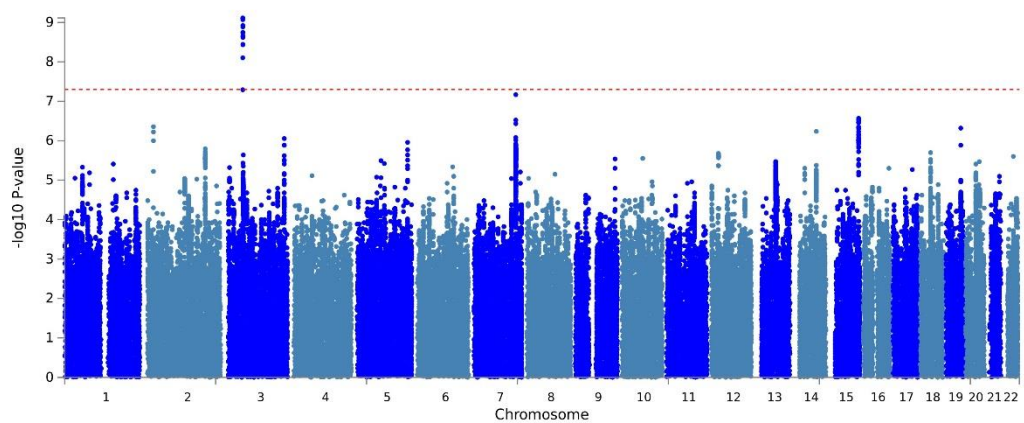
Supplementary Figure 1. Flow diagram of exclusions / inclusions leading to final sample size.



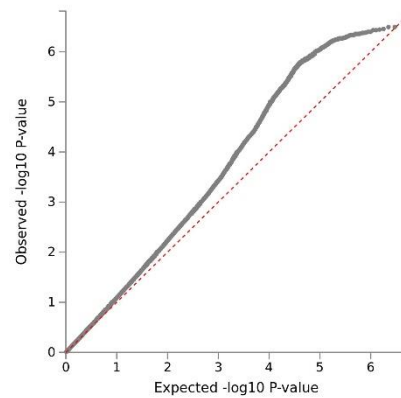
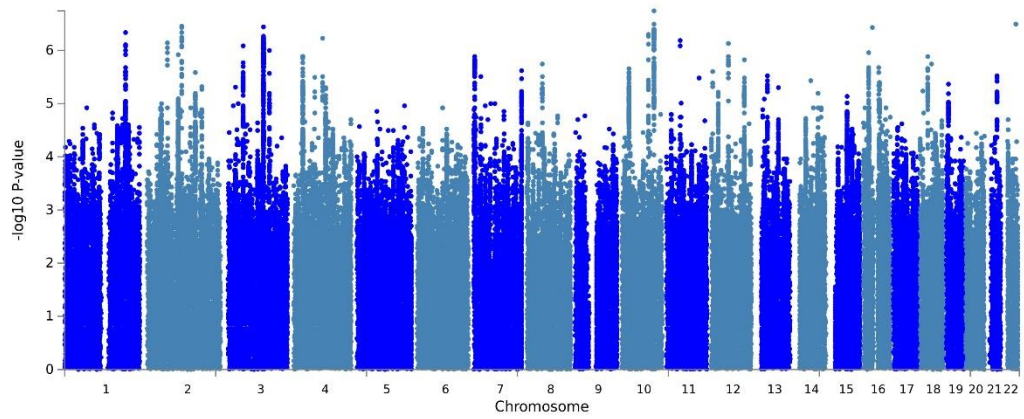
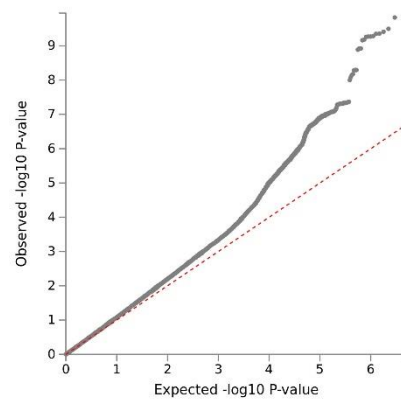
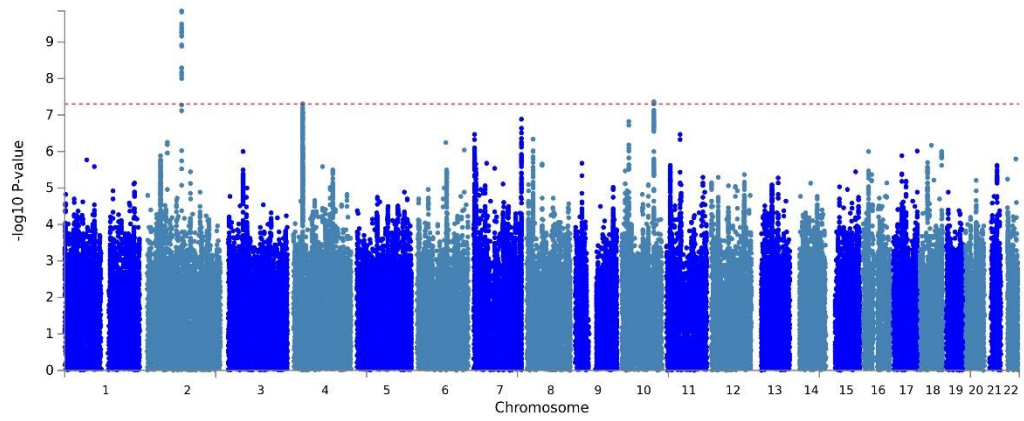
Supplementary Figure 2. **Anhedonia** Manhattan and QQ plots (binary phenotype above and ordinal below)



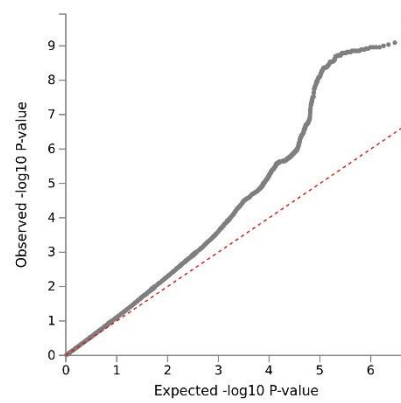
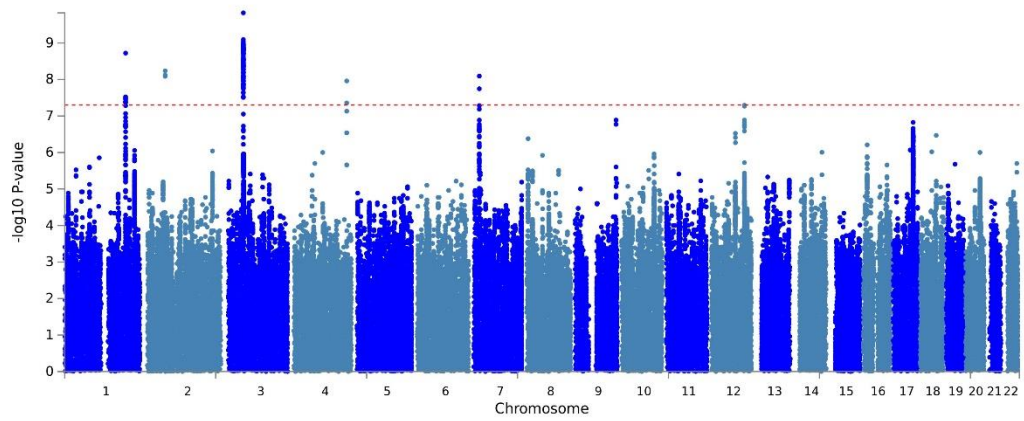
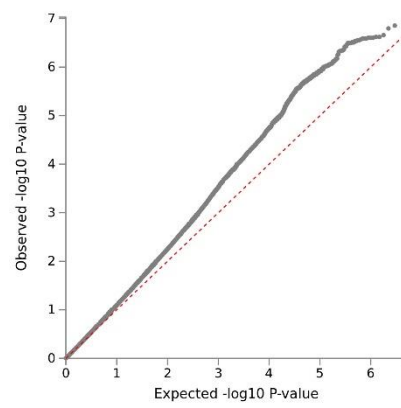
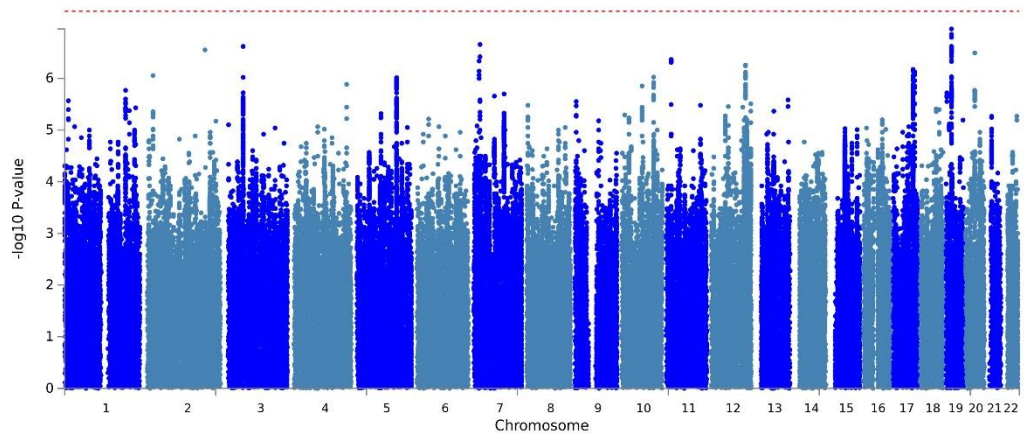
Supplementary Figure 3. Depressed mood Manhattan and QQ plots (binary phenotype above and ordinal below)



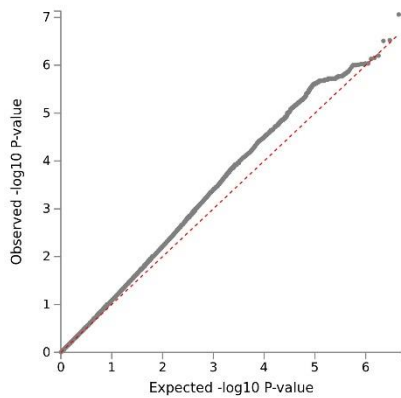
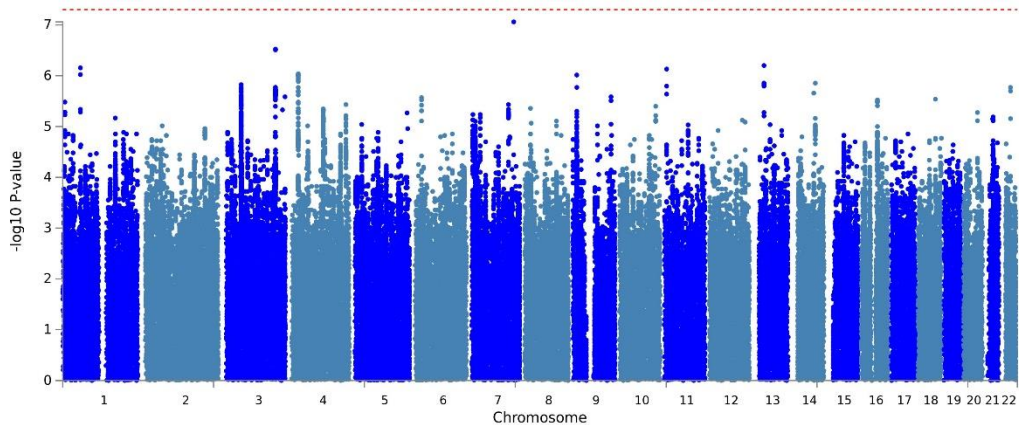
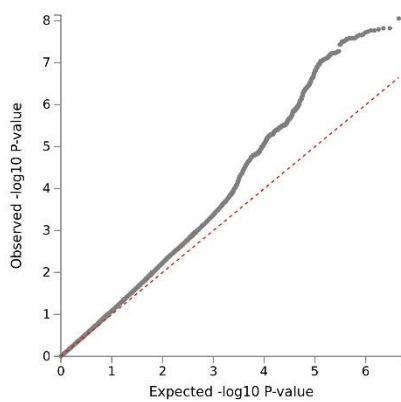
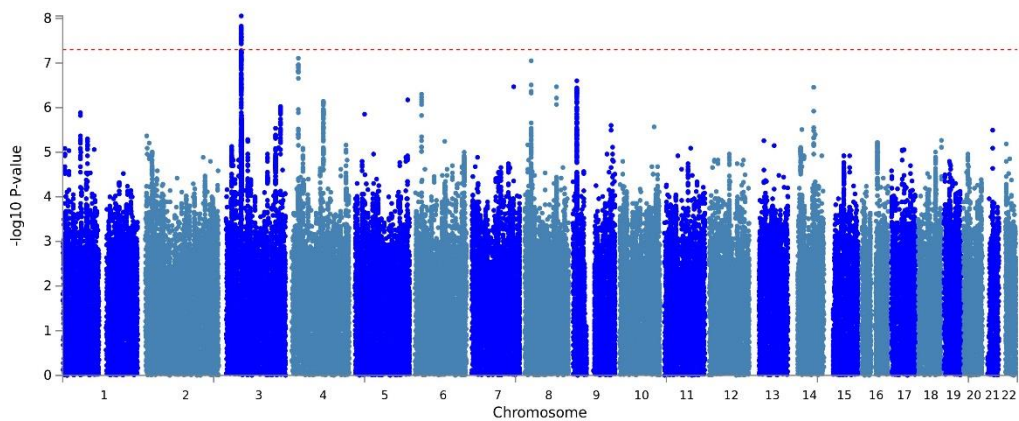
Supplementary Figure 4. Sleep problems Manhattan and QQ plots (binary phenotype above and ordinal below)



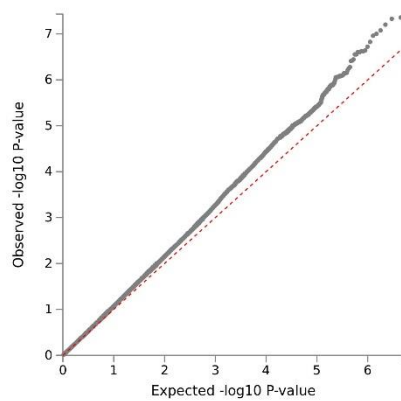
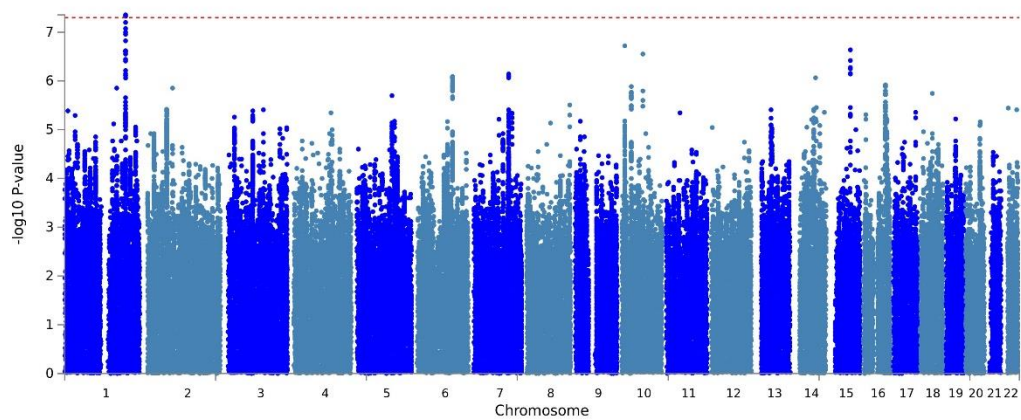
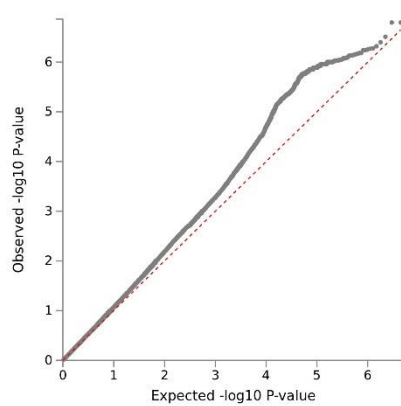
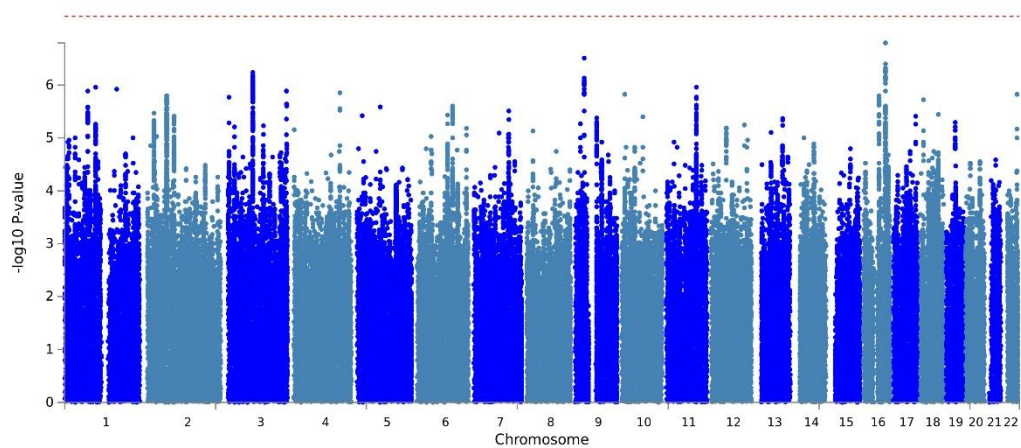
Supplementary Figure 5. Fatigue Manhattan and QQ plots (binary phenotype above and ordinal below)



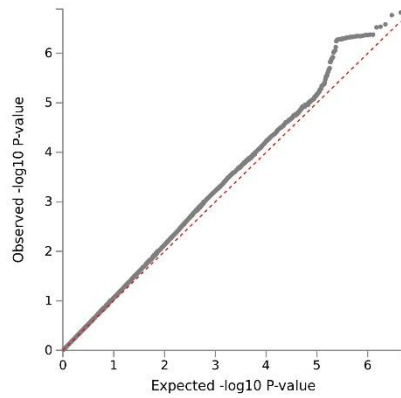
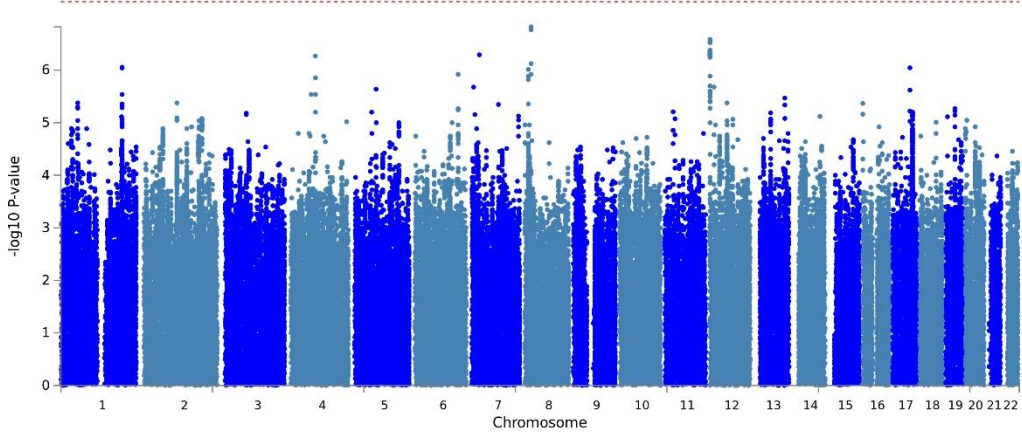
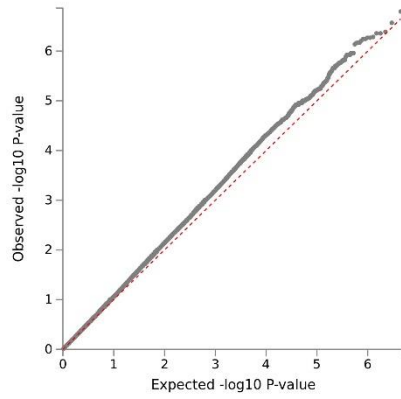
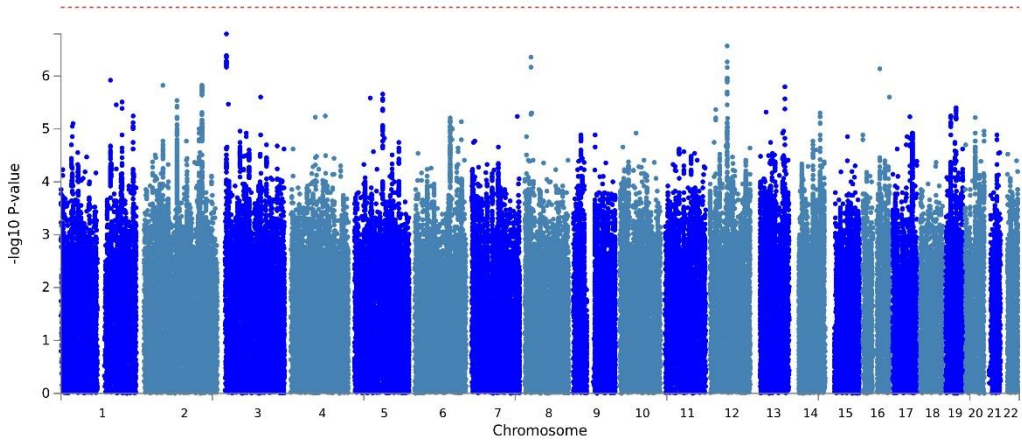
Supplementary Figure 6. **Appetite changes** Manhattan and QQ plots (binary phenotype above and ordinal below)



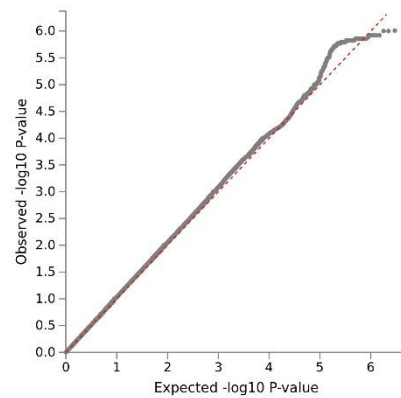
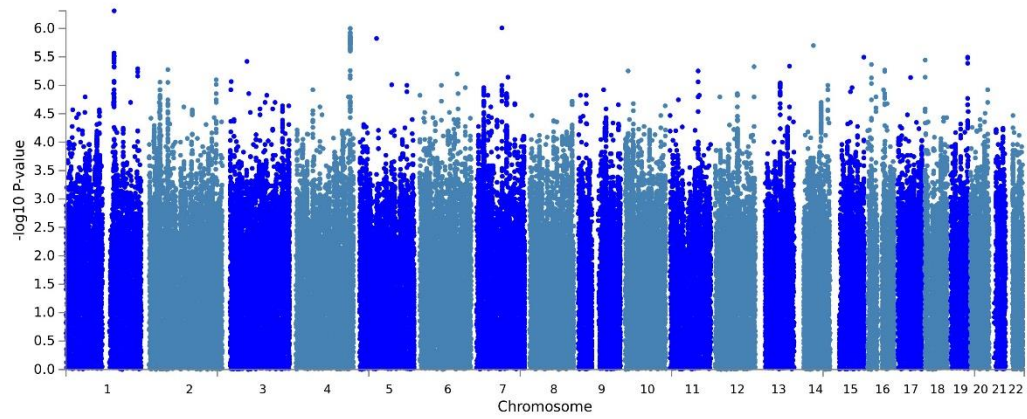
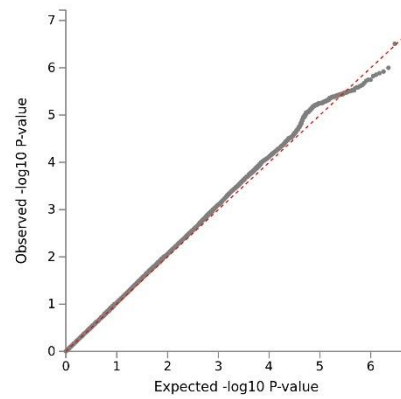
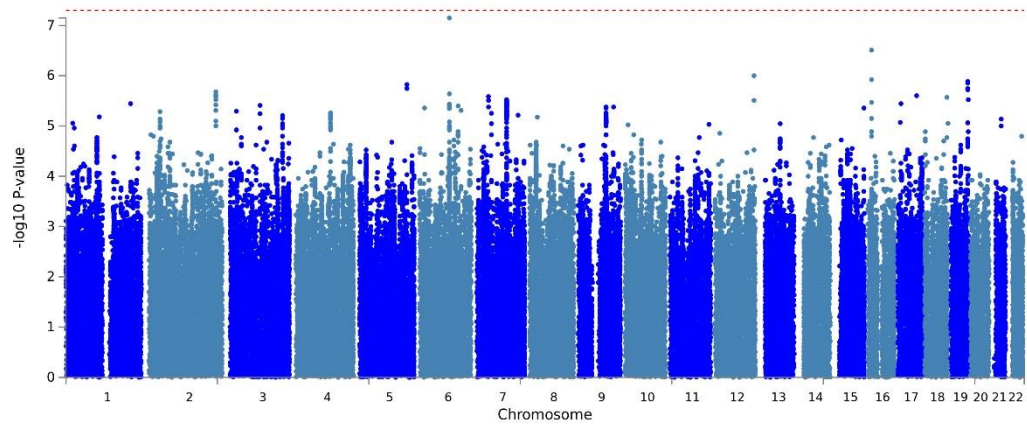
Supplementary Figure 7. **Low self-esteem** Manhattan and QQ plots (binary phenotype above and ordinal below)



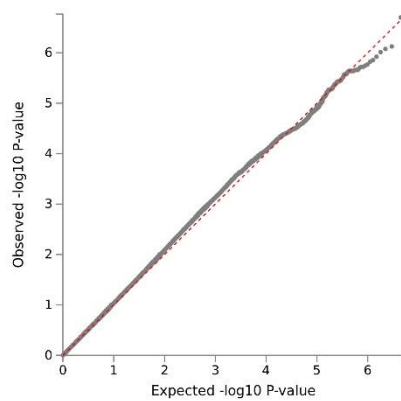
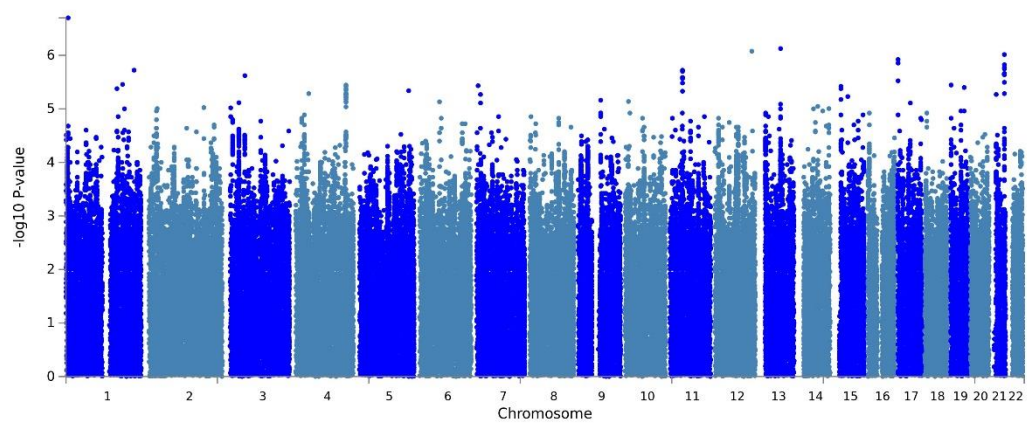
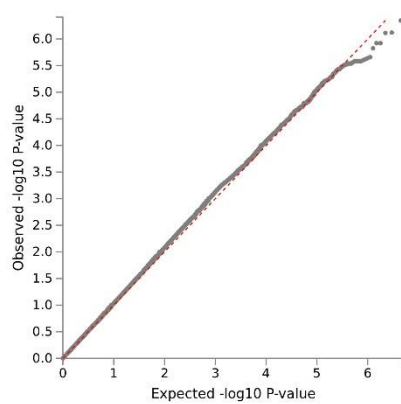
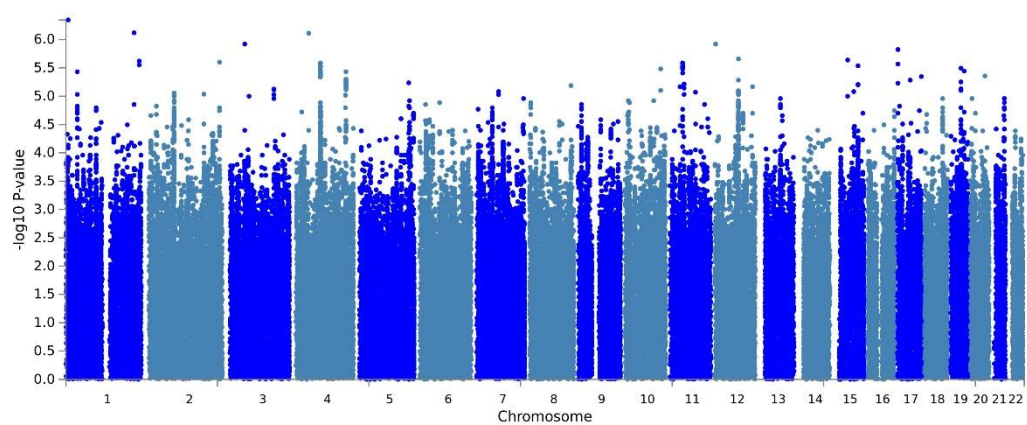
Supplementary Figure 8. Concentration problems Manhattan and QQ plots (binary phenotype above and ordinal below)



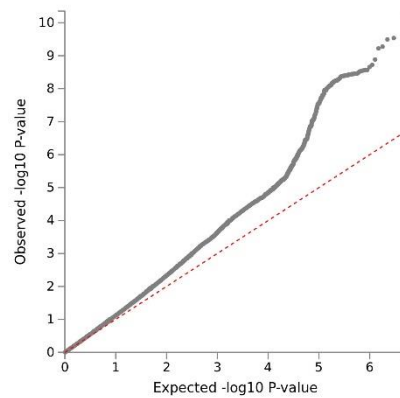
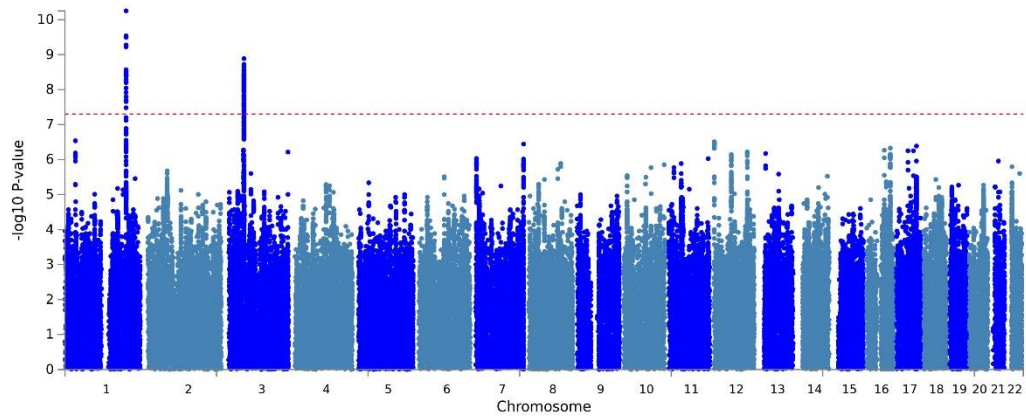
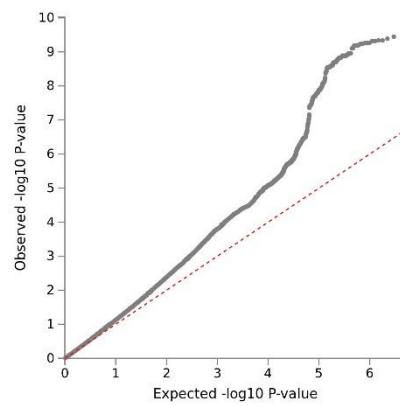
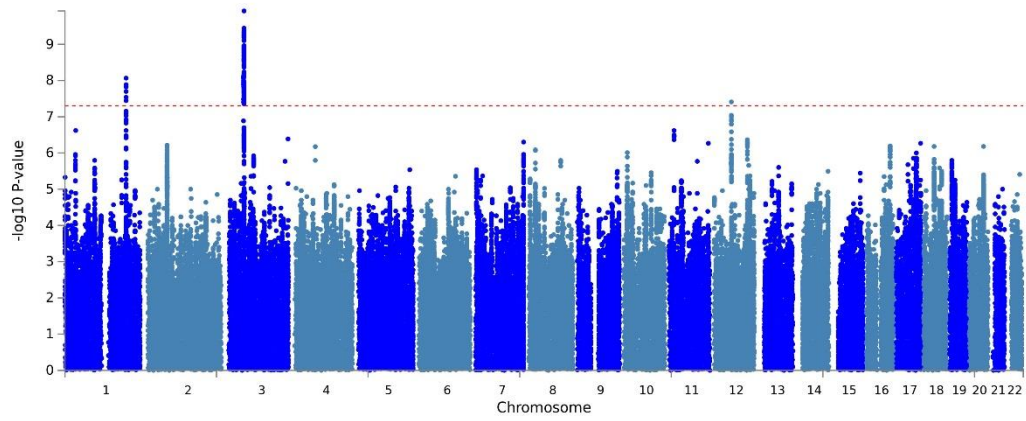
Supplementary Figure 9. Psychomotor changes Manhattan and QQ plots (binary phenotype above and ordinal below)



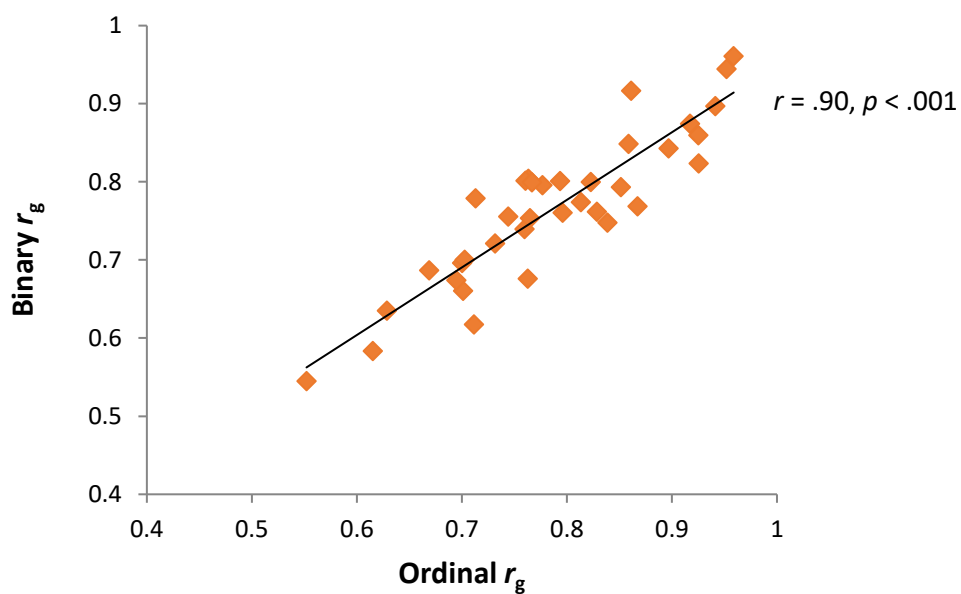
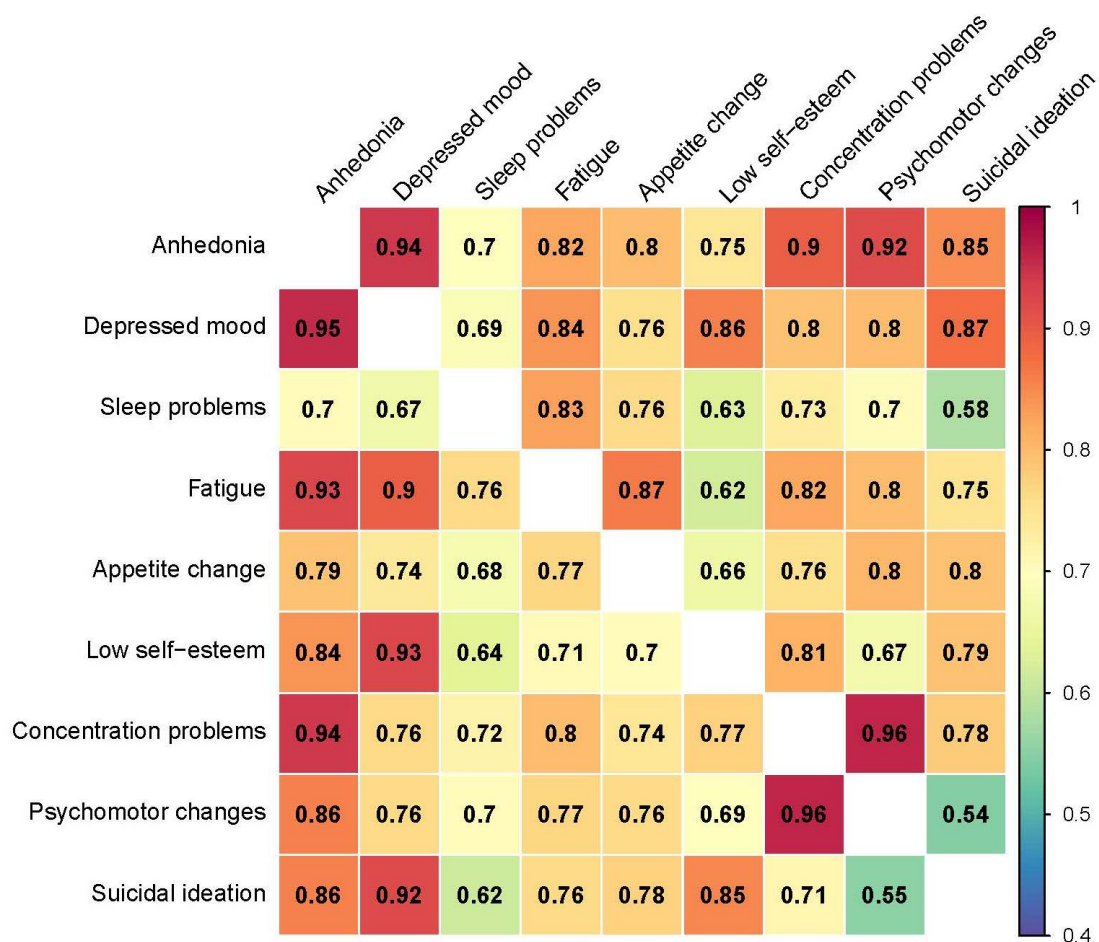
Supplementary Figure 10. Suicidal ideation Manhattan and QQ plots (binary phenotype above and ordinal below)



Supplementary Figure 11. Sum-score Manhsattan and QQ plots (binary phenotype above and ordindal below)



Supplementary Figure 12. Comparison of inter-item genetic correlations (r_g) between binary items (above diagonal in correlation heatmap) and ordinal items (below diagonal).



Supplementary Figure 13. Scatterplots of genetic correlations vs. phenotypic correlations for both ordinal and binary items.

