

Supplementary Figure 1 a-k

Echosounding profiles from the southern Icelandic margin conducted during RV Poseidon cruise 457, modified after Werner et al., 2014[#]

[#]Werner, R., Nürnberg, D., Bonanati, C., Evers, F., Friðriksson, Á., Hümbes, P., Portnyagin, M., Raddatz, J., Schattel, N., van den Bogaard, C., Zieringer, M., 2014. R/V POSEIDON Cruise Report P457.

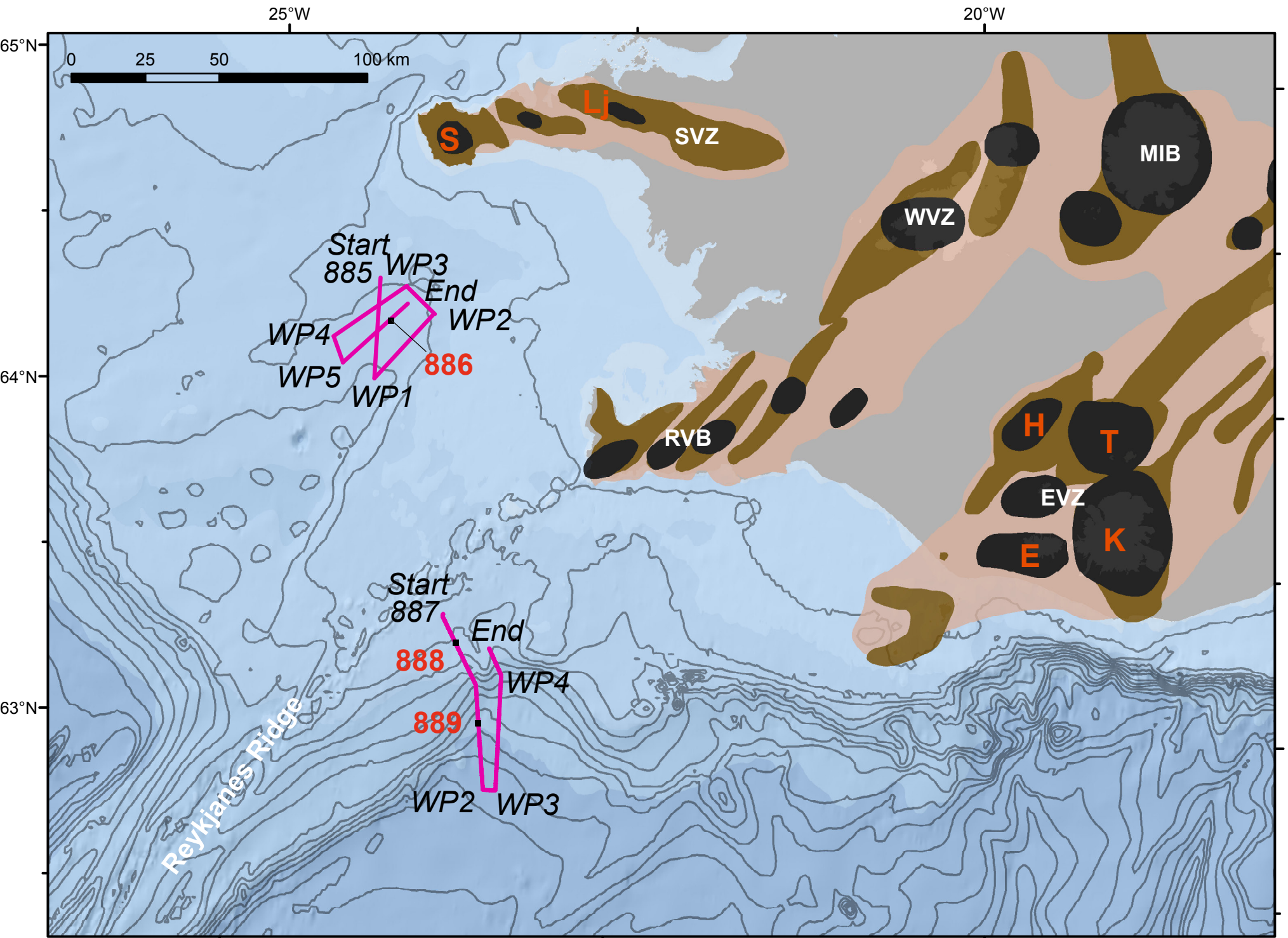
The Eyjafjallajökull 2010 eruption and the preservation of medium-sized eruptions in marine surface sediment offshore southern Iceland

Christina Bonanati^{1*}, Heidi Wehrmann¹, Maxim Portnyagin¹ and Kaj Hoernle^{1,2}

¹GEOMAR Helmholtz Center for Ocean Research Kiel
Wischhofstr. 1-3
24148 Kiel
Germany

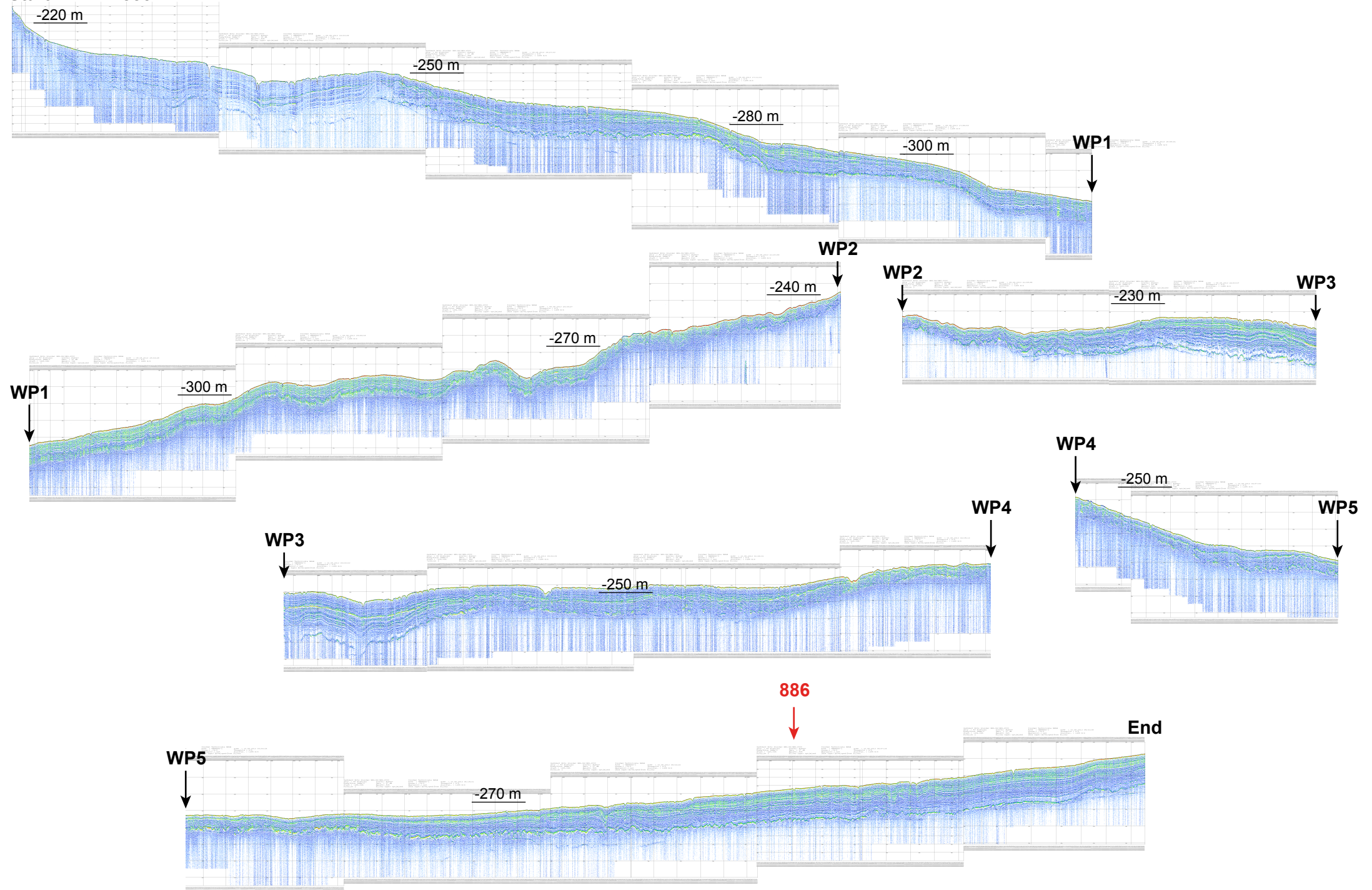
²Christian-Albrechts-University, Kiel, Germany

*corresponding author:
+49 431600 2569
cbonanati@geomar.de



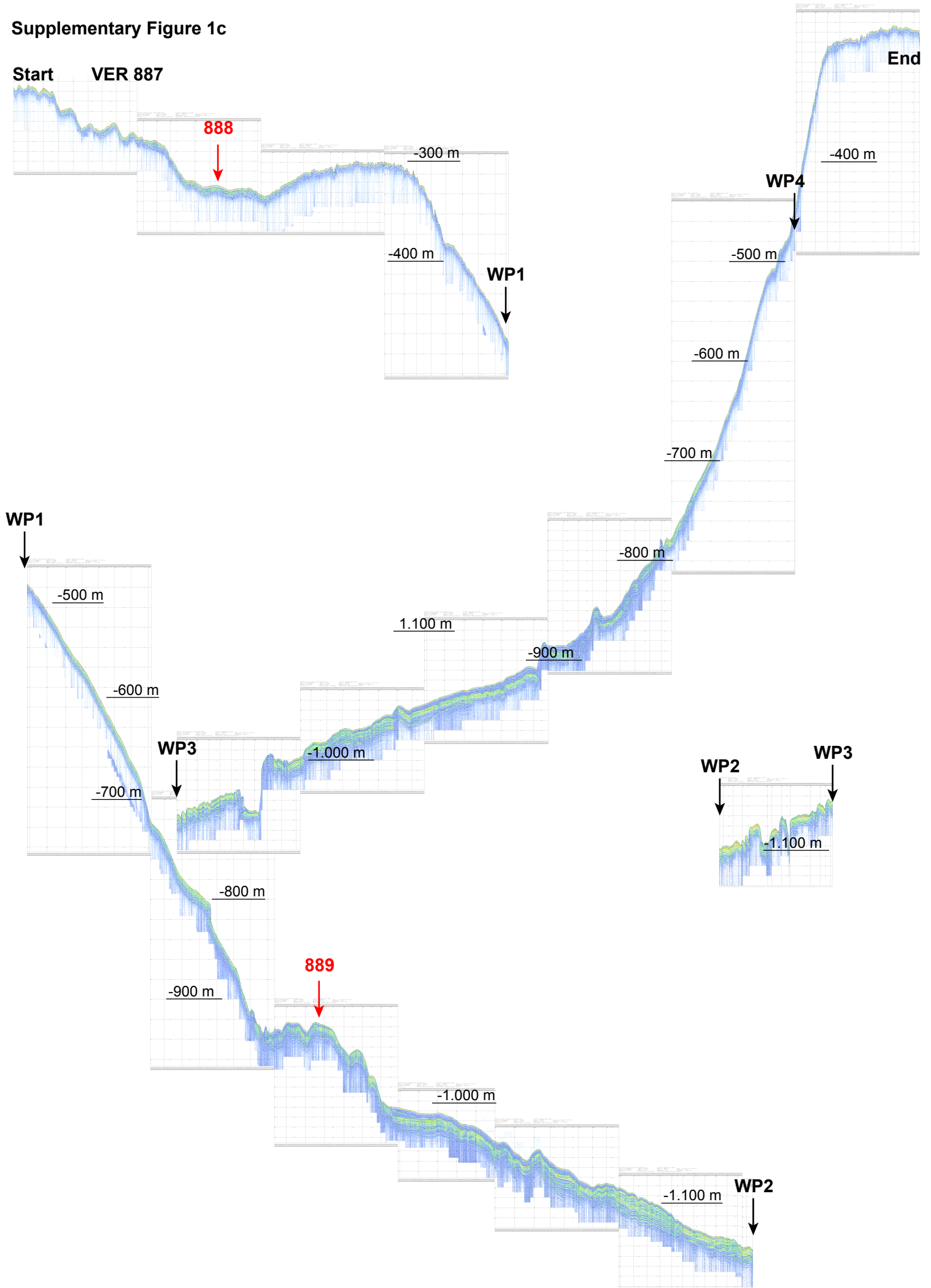
Supplementary Figure 1b

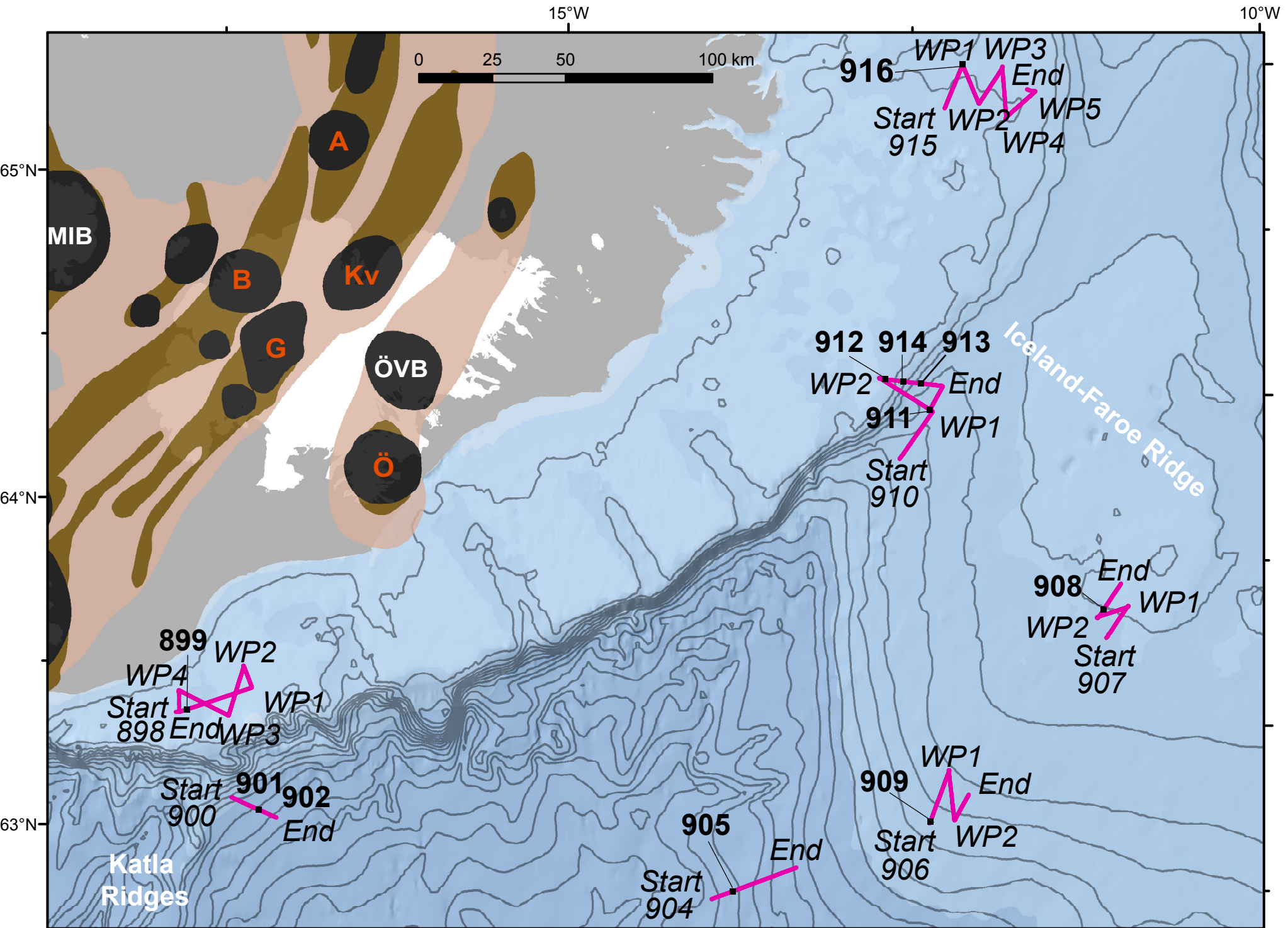
Start VER 885



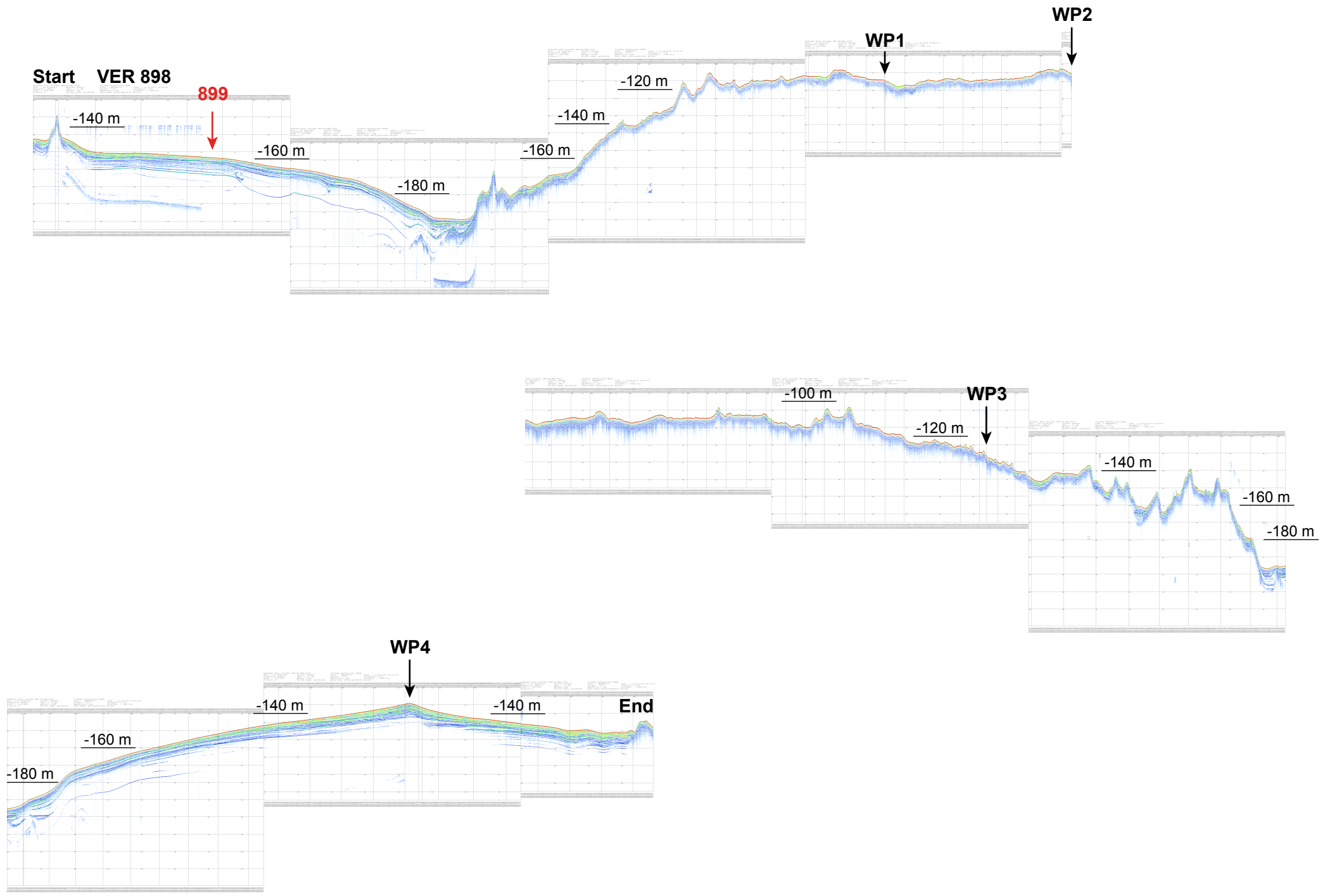
End

Supplementary Figure 1c

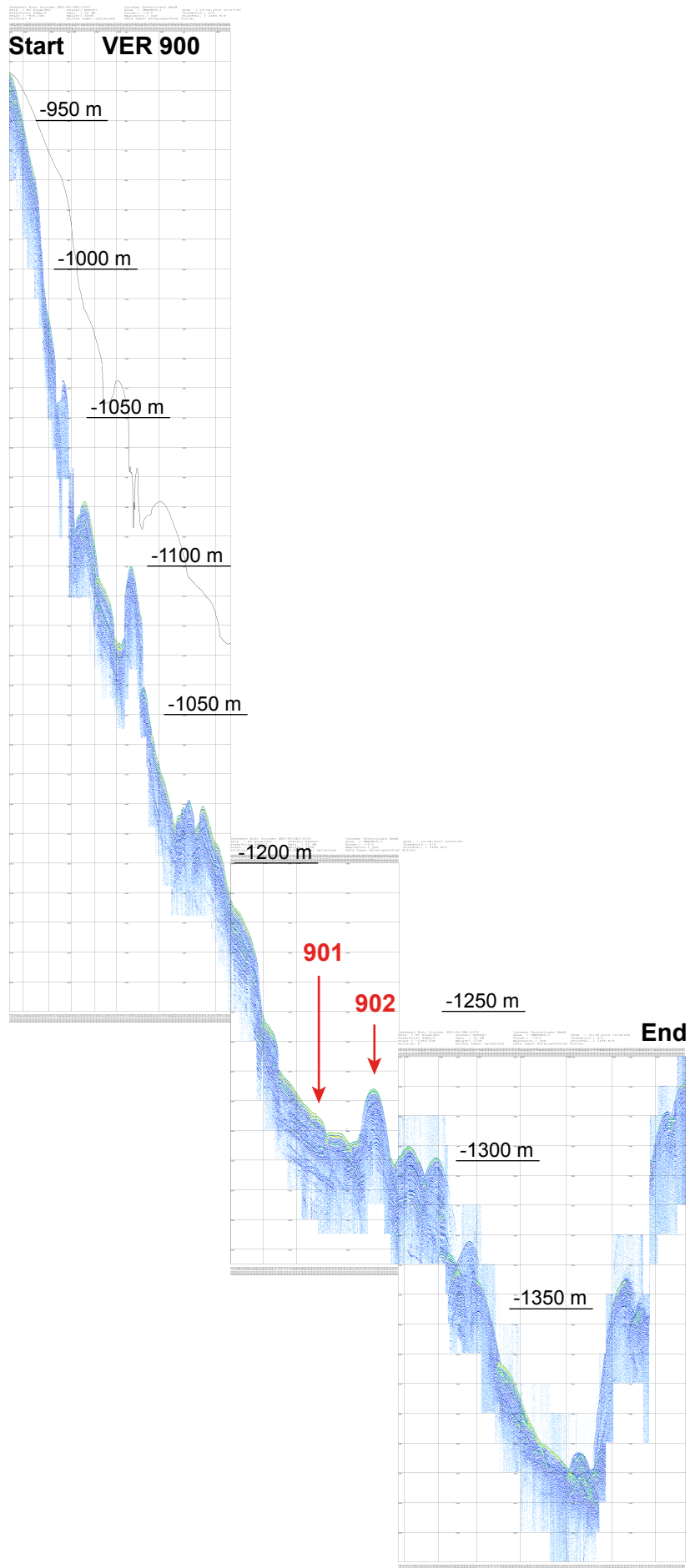




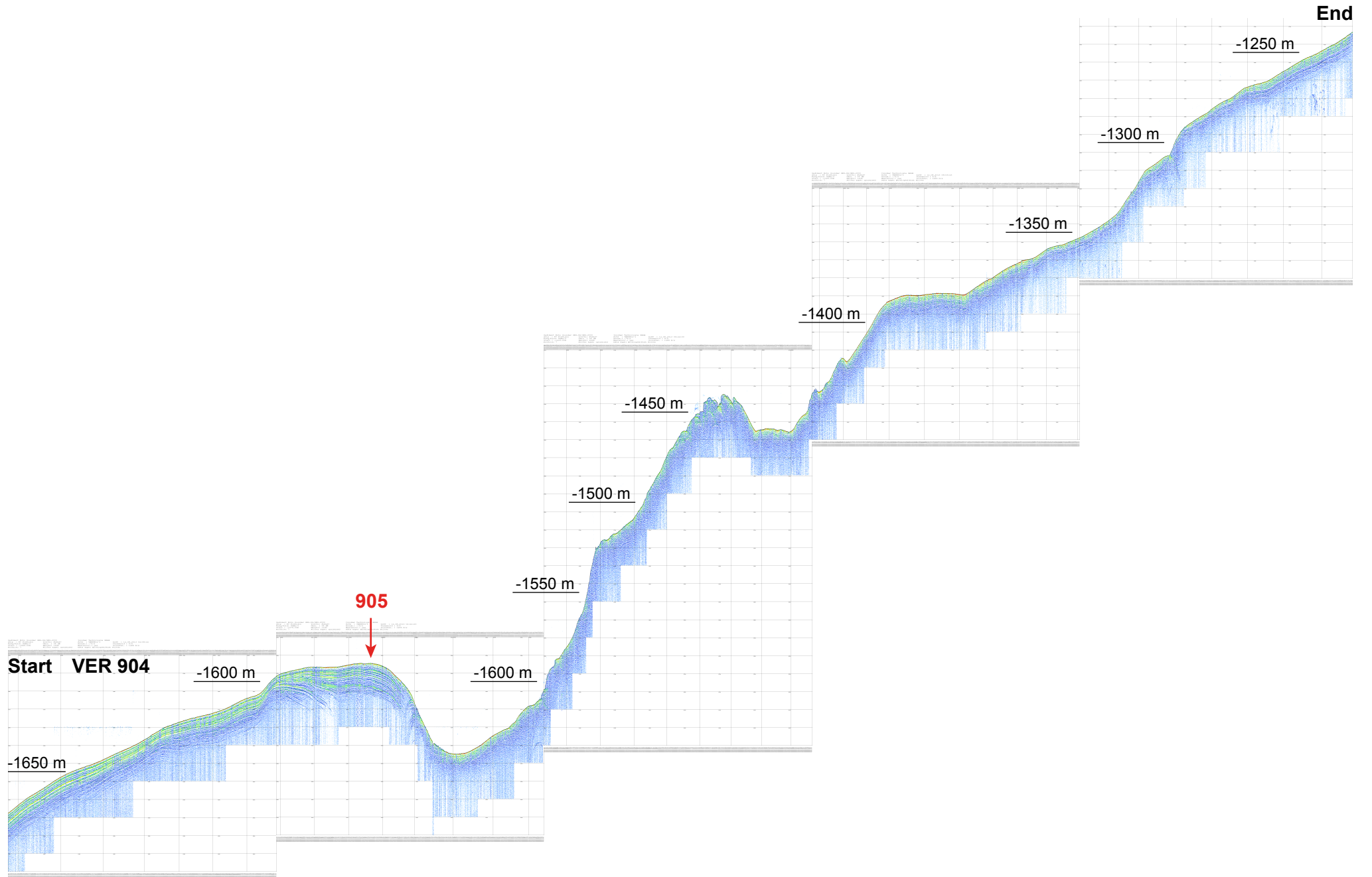
Supplementary Figure 1e



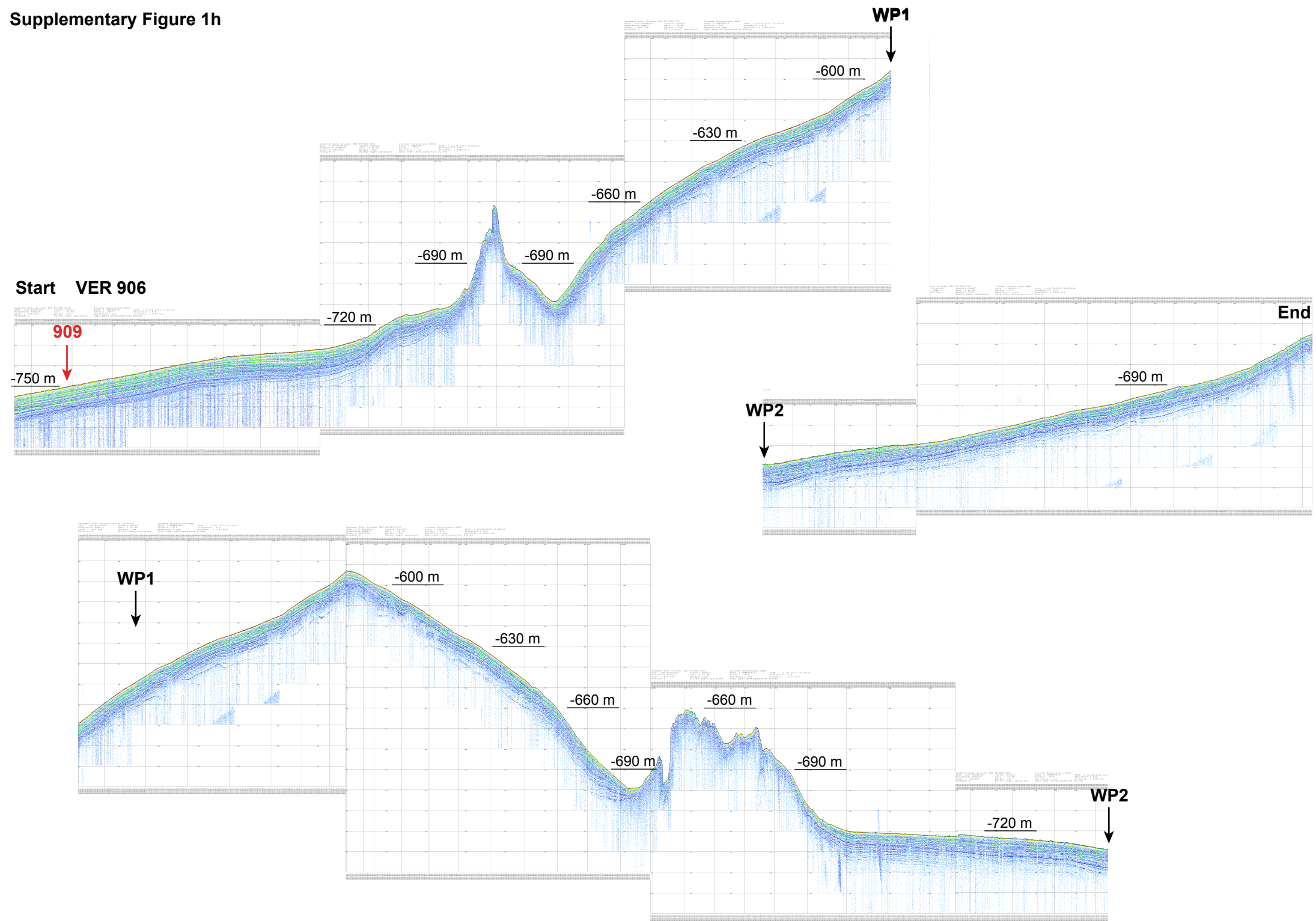
Supplementary Figure 1f



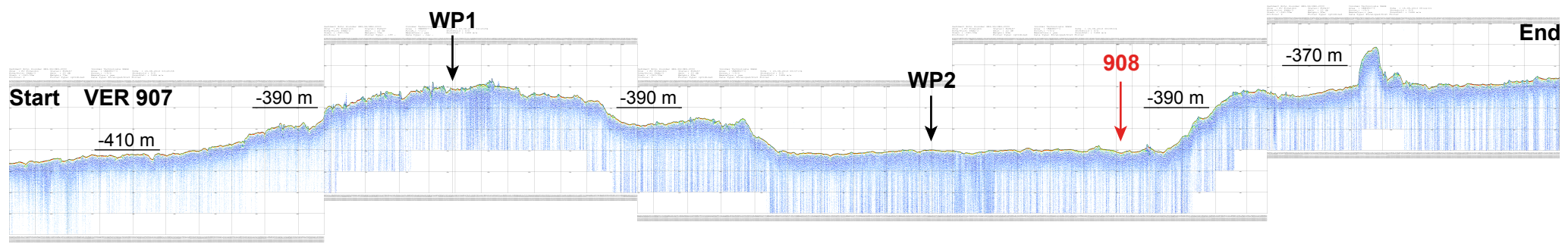
Supplementary Figure 1g



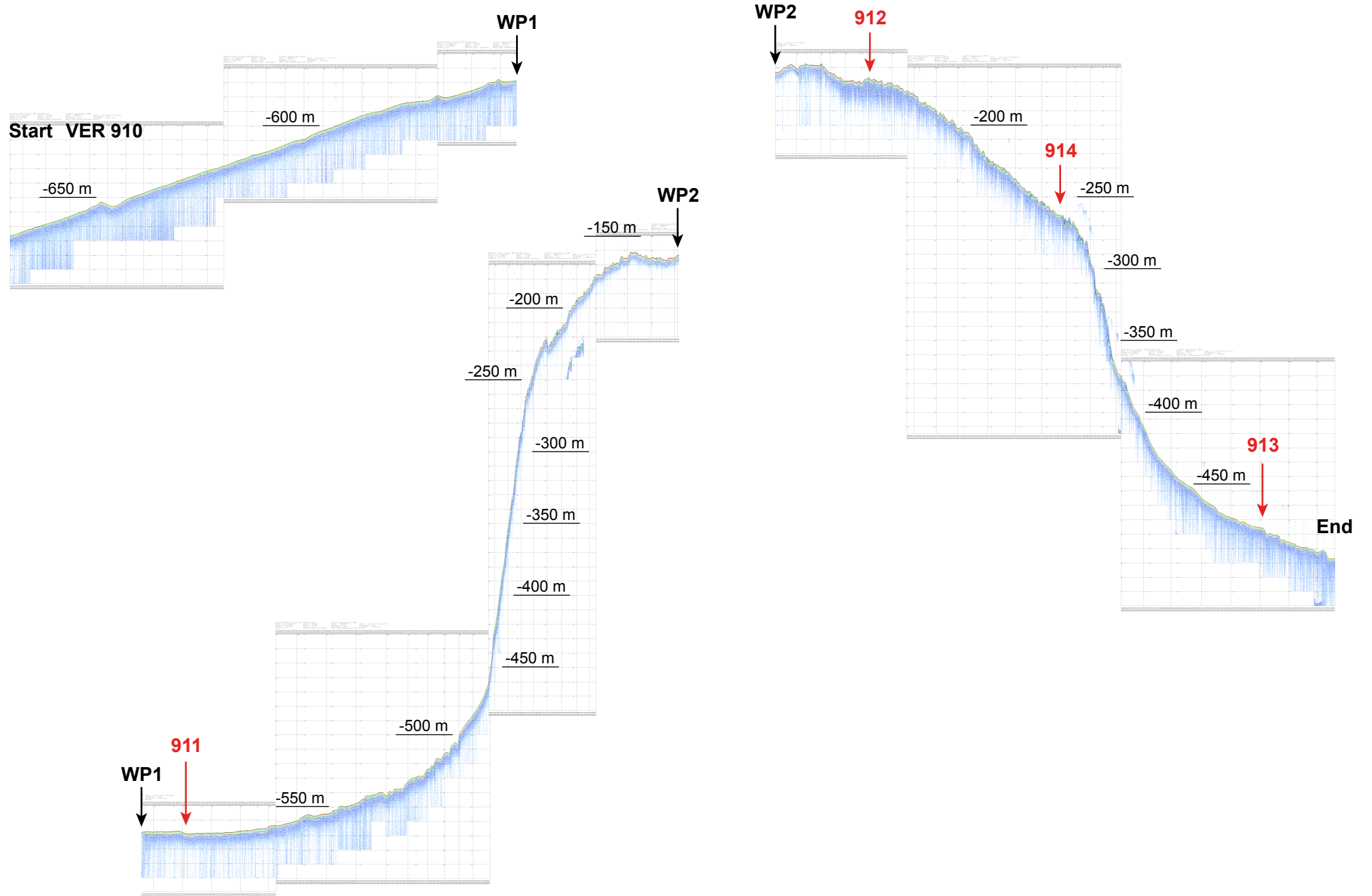
Supplementary Figure 1h



Supplementary Figure 1i



Supplementary Figure 1j



Supplementary Figure 1k

