

Stratigraphy, sedimentology, and archaeology of Middle Pleistocene localities near Ceprano, Campogrande area (Italy)

Italo Biddittu^a, Marie-hélène Moncel^{b,*}, Salvatore Milli^{c,*}, Luca Bellucci^{a,d}, Massimo Ruffo^a, Barbara Saracino^a
& Giorgio Manzi^{a,d,e,*}

^a *Istituto Italiano di Paleontologia Umana, Via Ulisse Aldrovandi 18, 00197 Roma (Italy)*

^b *Department of Human and Environment-UMR 7194 CNRS, National Museum of Natural History, Institut de Paléontologie Humaine, Rue René Panhard, 75013 Paris (France)*

^c *Dipartimento di Scienze della Terra, Sapienza Università di Roma, Piazzale Aldo Moro 5, 00185 Roma (Italy)*

^d *Polo museale Sapienza, Sapienza Università di Roma, Piazzale Aldo Moro 5, 00185 Roma (Italy)*

^e *Dipartimento di Biologia Ambientale, Sapienza Università di Roma, Piazzale Aldo Moro 5, 00185 Roma (Italy)*

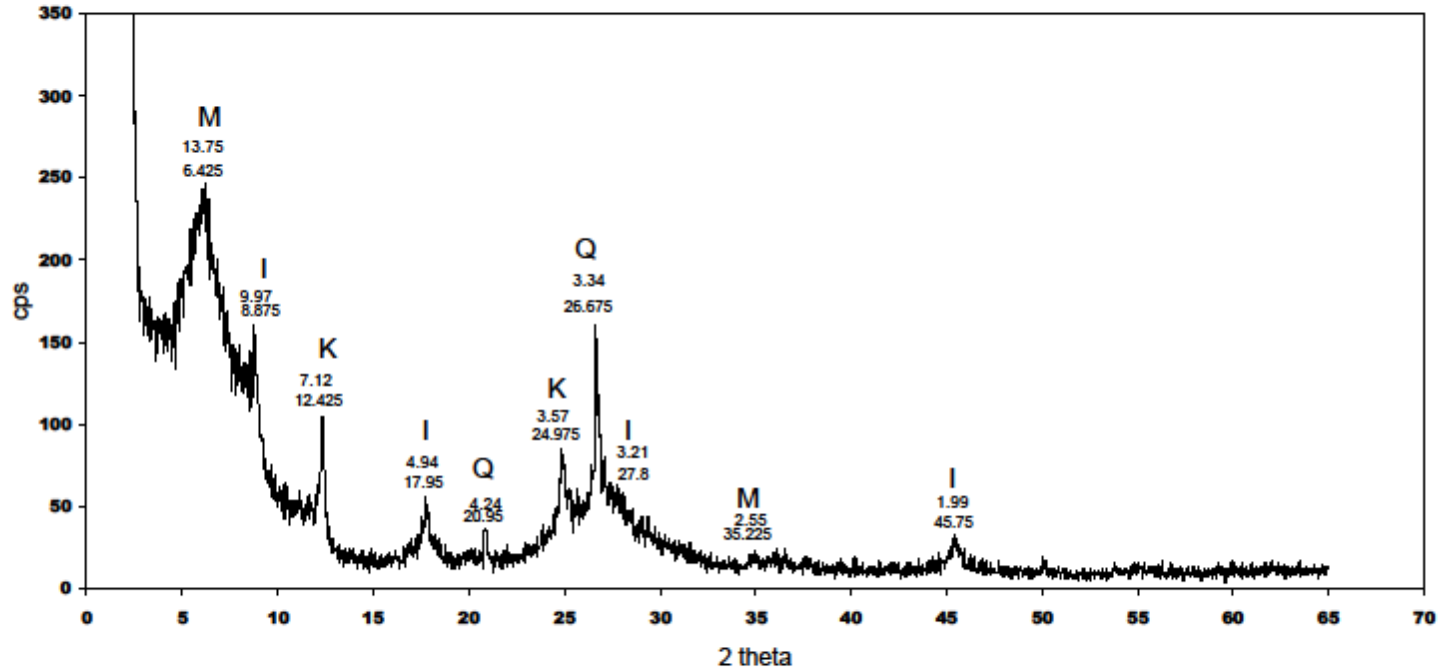
* *marie-helene.moncel@mnhn.fr, salvatore.milli@uniroma1.it, giorgio.manzi@uniroma1.it*

SUPPLEMENTARY MATERIAL (mineralogy)

Clay samples

X-ray diffractometry diagrams

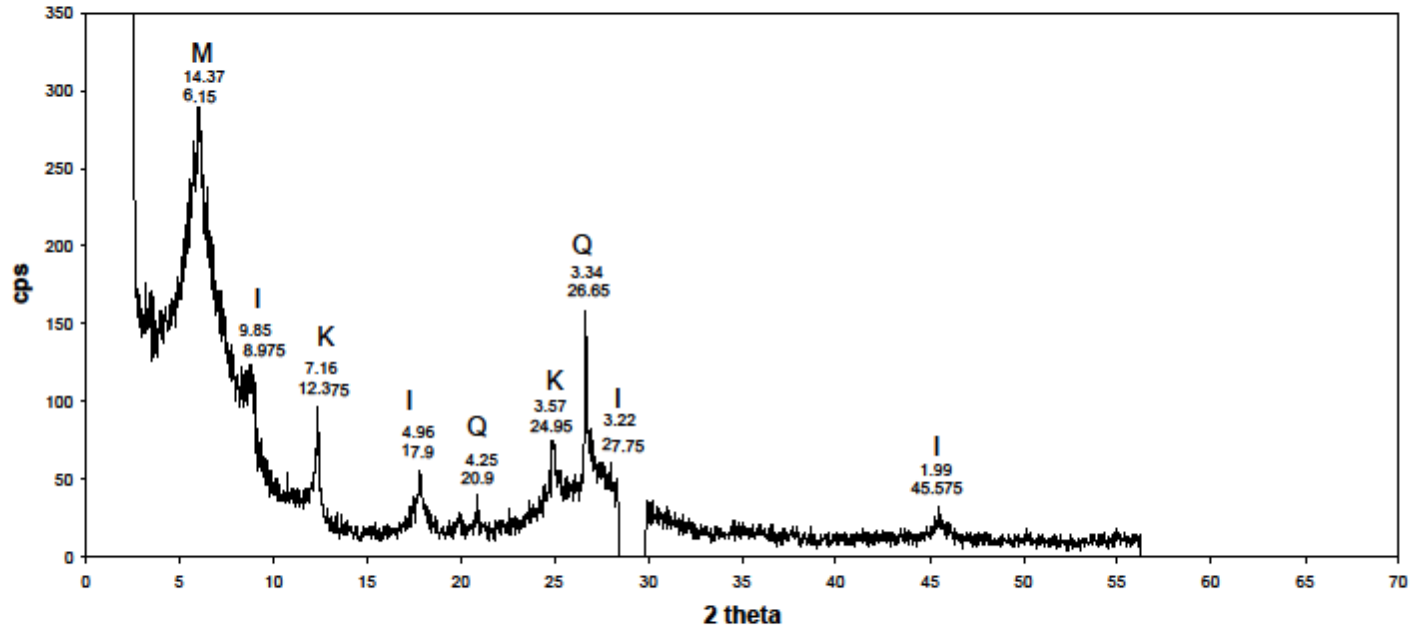
CG9infargillaNIEdiS2 orien



SAMPLE 1 (CG9 inf.)

SAMPLE 1 (1; P section, Unit A)

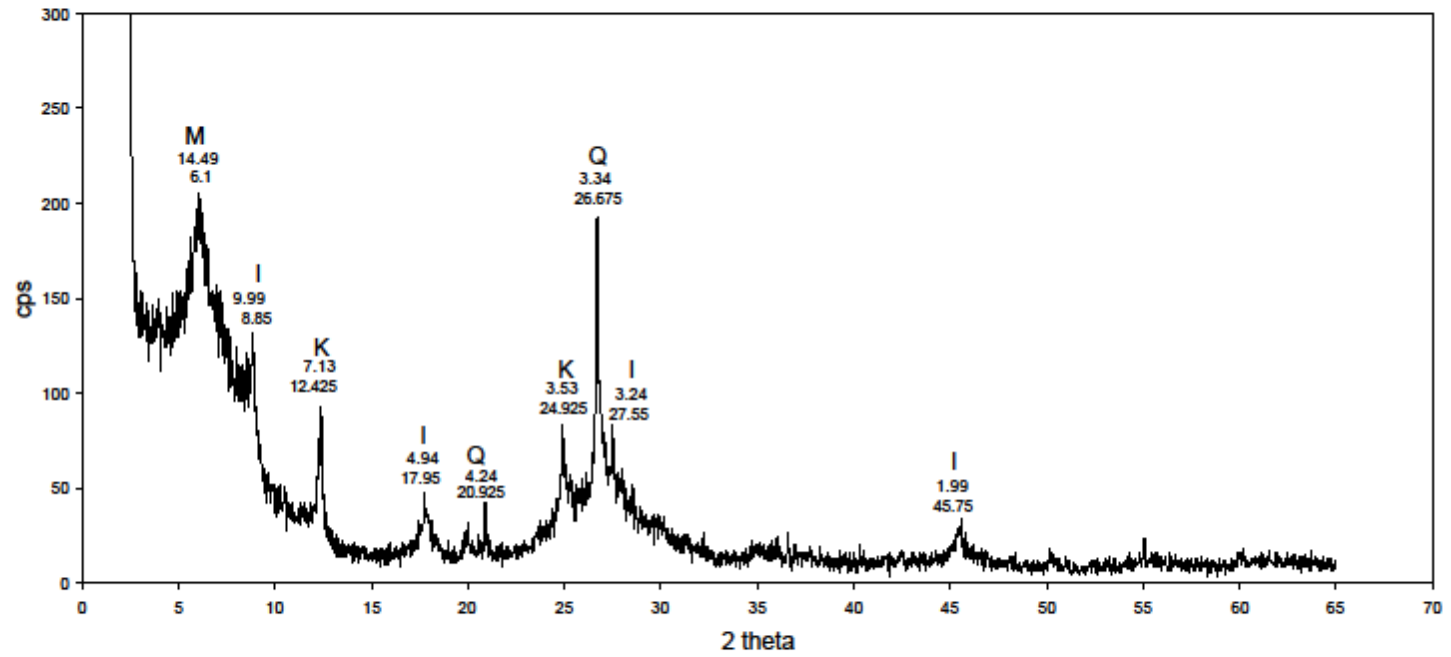
CG9inf.q.BJ66 orient.



SAMPLE 2 (CG9 inf.)

SAMPLE 2 (2; P section, Unit A)

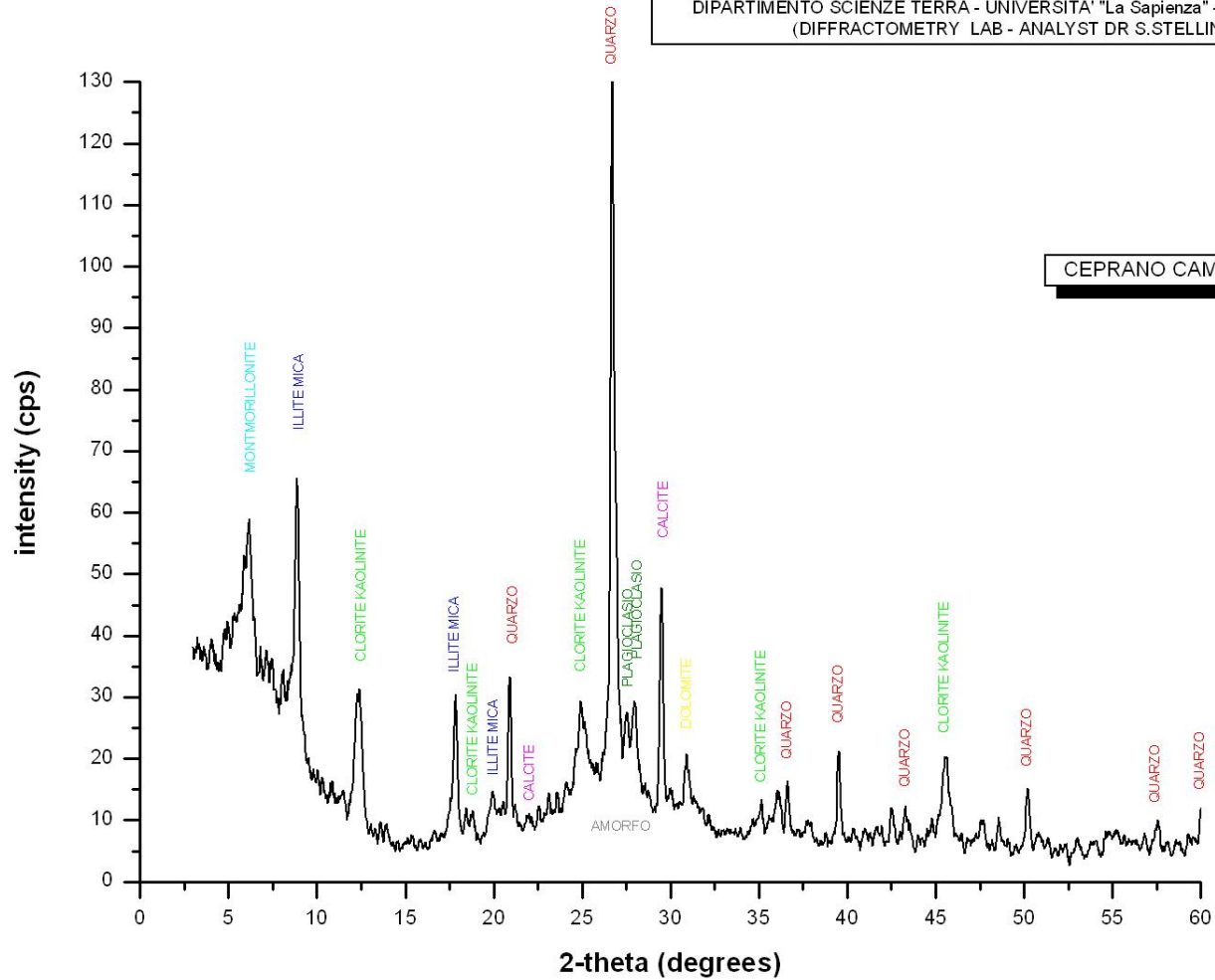
SH=CG1 orientato



SAMPLE 3 (SH-CG1)

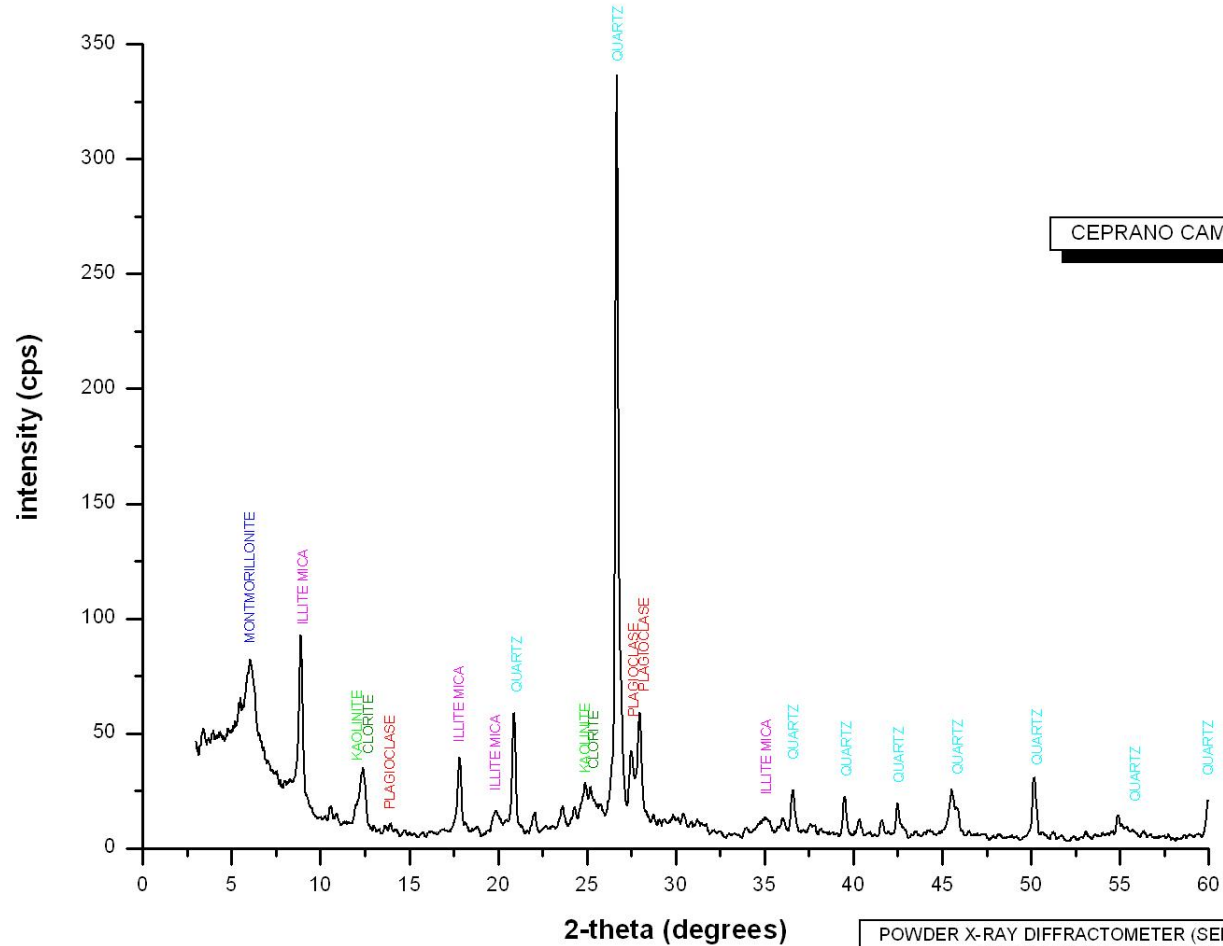
SAMPLE 3 (3; P section, Unit G)

DIPARTIMENTO SCIENZE TERRA - UNIVERSITA' "La Sapienza" - ROMA (ITALY)
(DIFFRACTOMETRY LAB - ANALYST DR S.STELLINO)



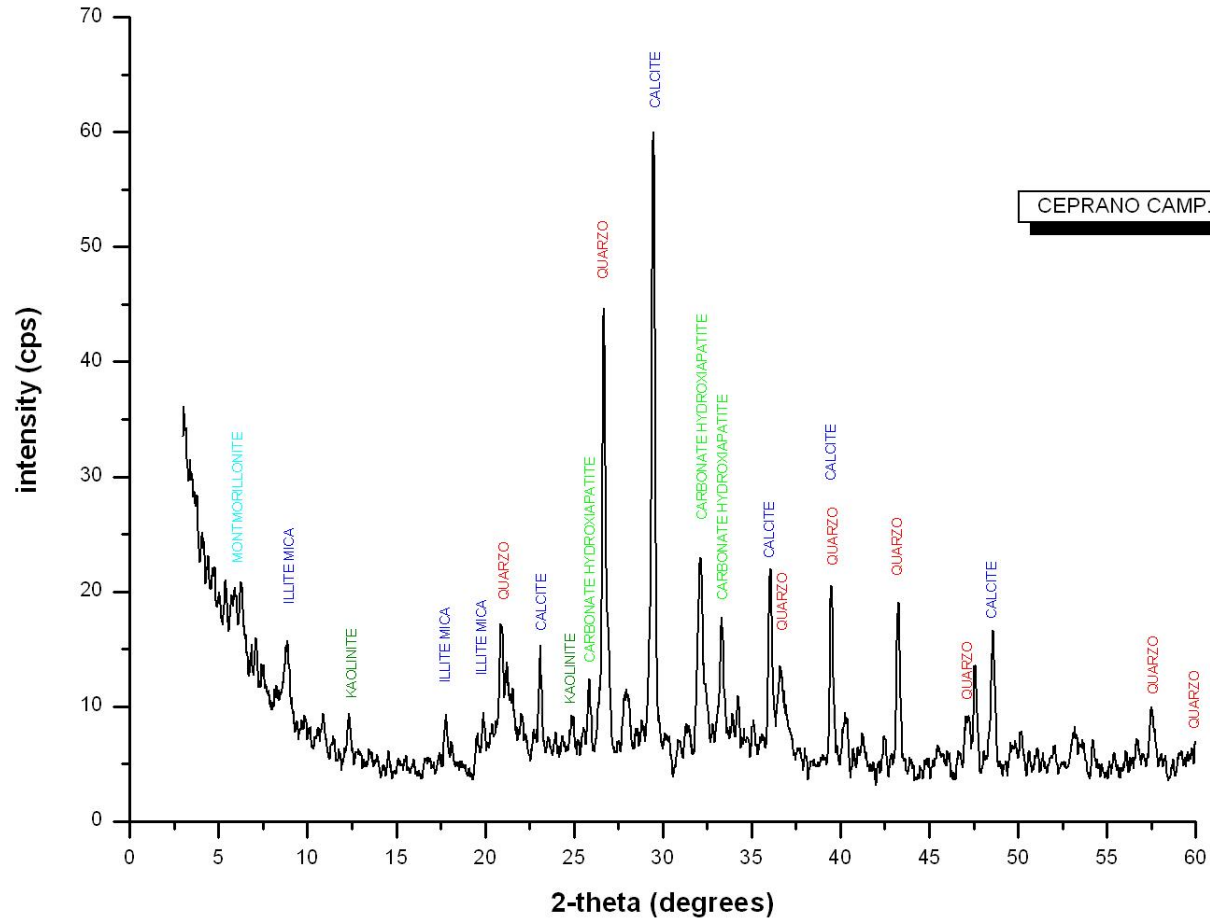
SAMPLE 4 (4; T trench, Unit 10)

DIPARTIMENTO SCIENZE TERRA - UNIVERSITA' "La Sapienza" - ROMA (ITALY)
(DIFFRACTOMETRY LAB - ANALYST DR S.STELLINO)



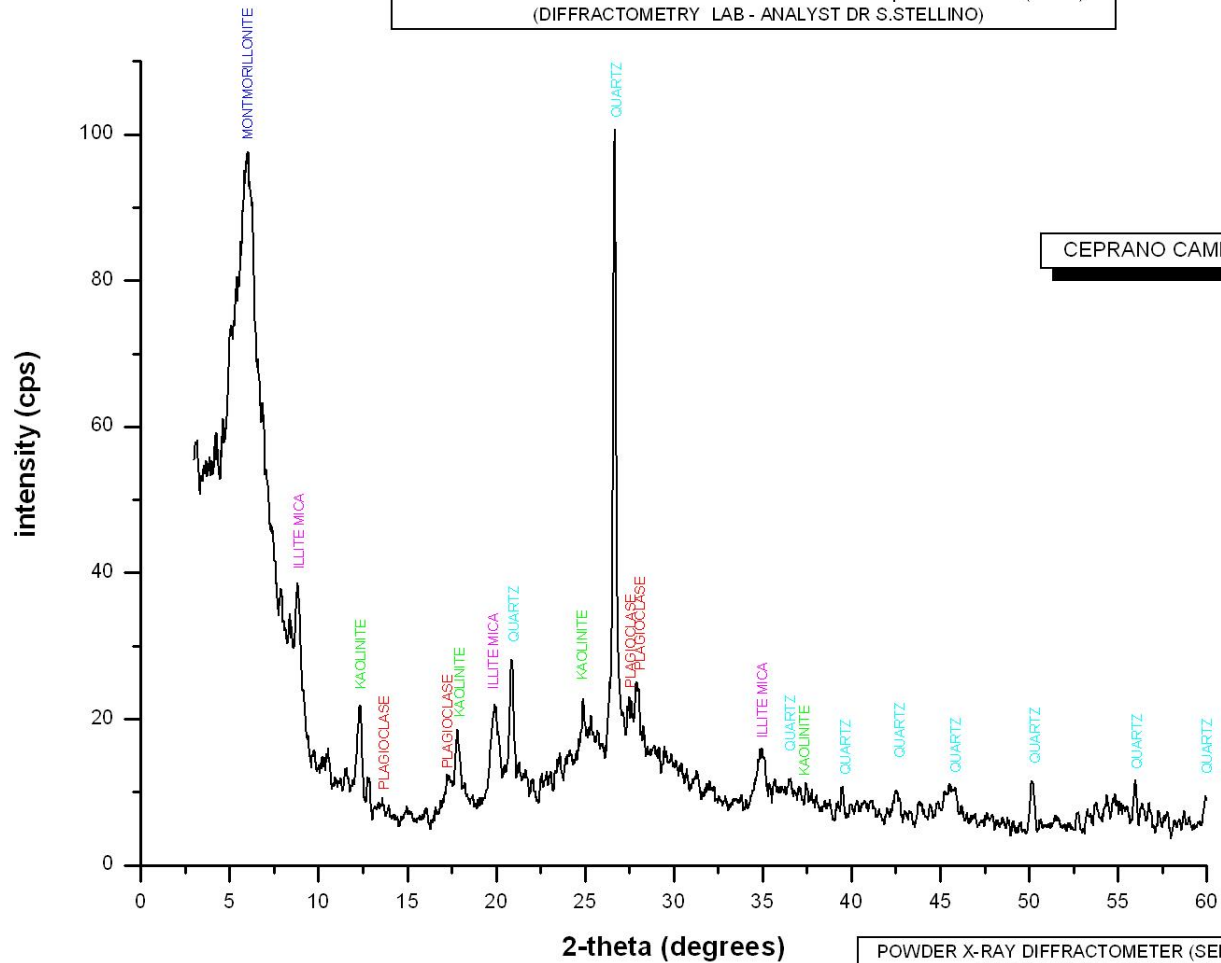
POWDER X-RAY DIFFRACTOMETER (SEIFERT MZ IV)
INSTRUMENTAL CONDITION:
Radiation: Cu-Kalfa, scan step: 0.02°,
time counting: 2sec., monocr. graphite

SAMPLE 5 (7; T trench, Unit 10)



SAMPLE 6 (12-13; T trench, Unit 7)

DIPARTIMENTO SCIENZE TERRA - UNIVERSITA' "La Sapienza" - ROMA (ITALY)
(DIFFRACTOMETRY LAB - ANALYST DR S.STELLINO)

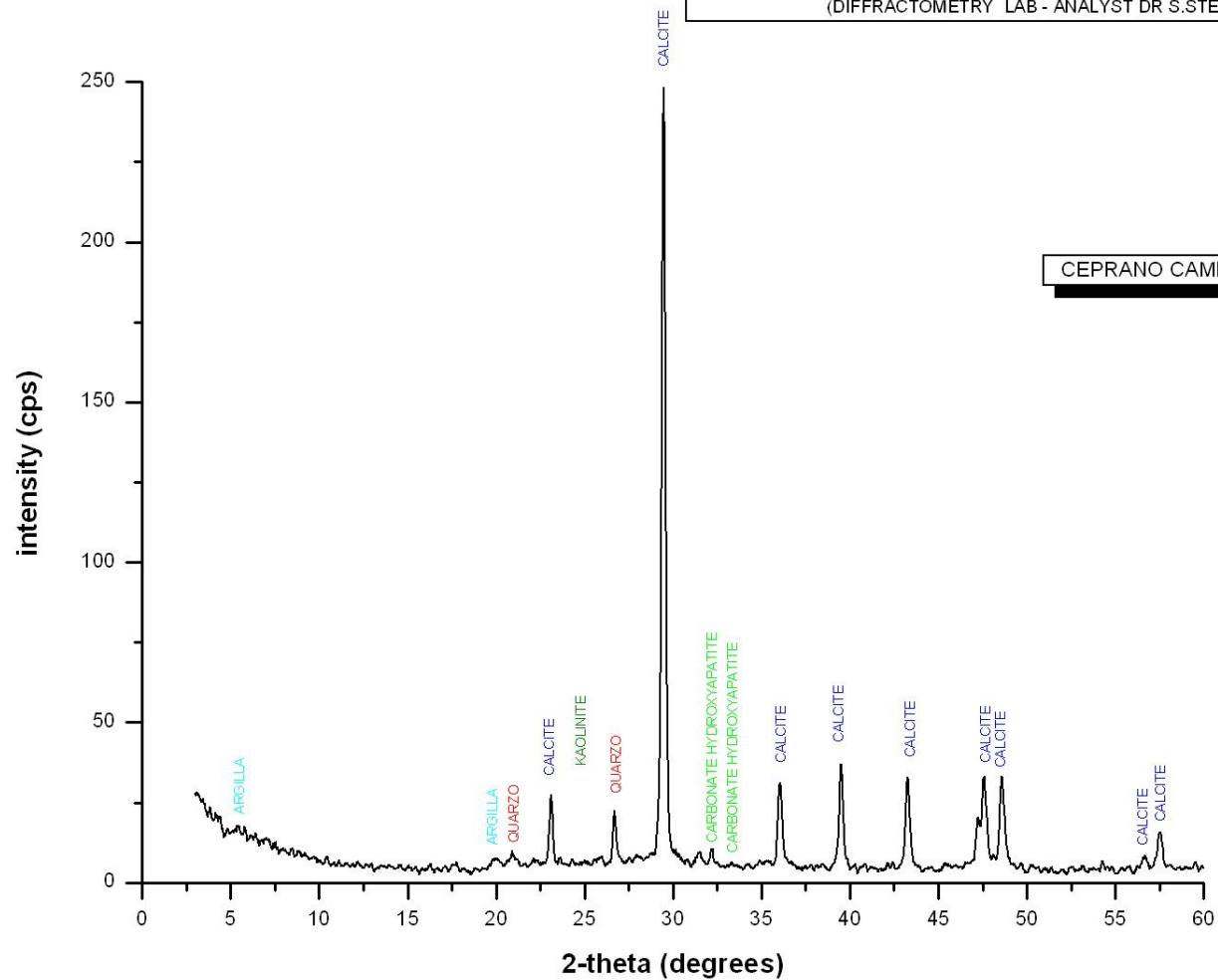


CEPRANO CAMP. 23

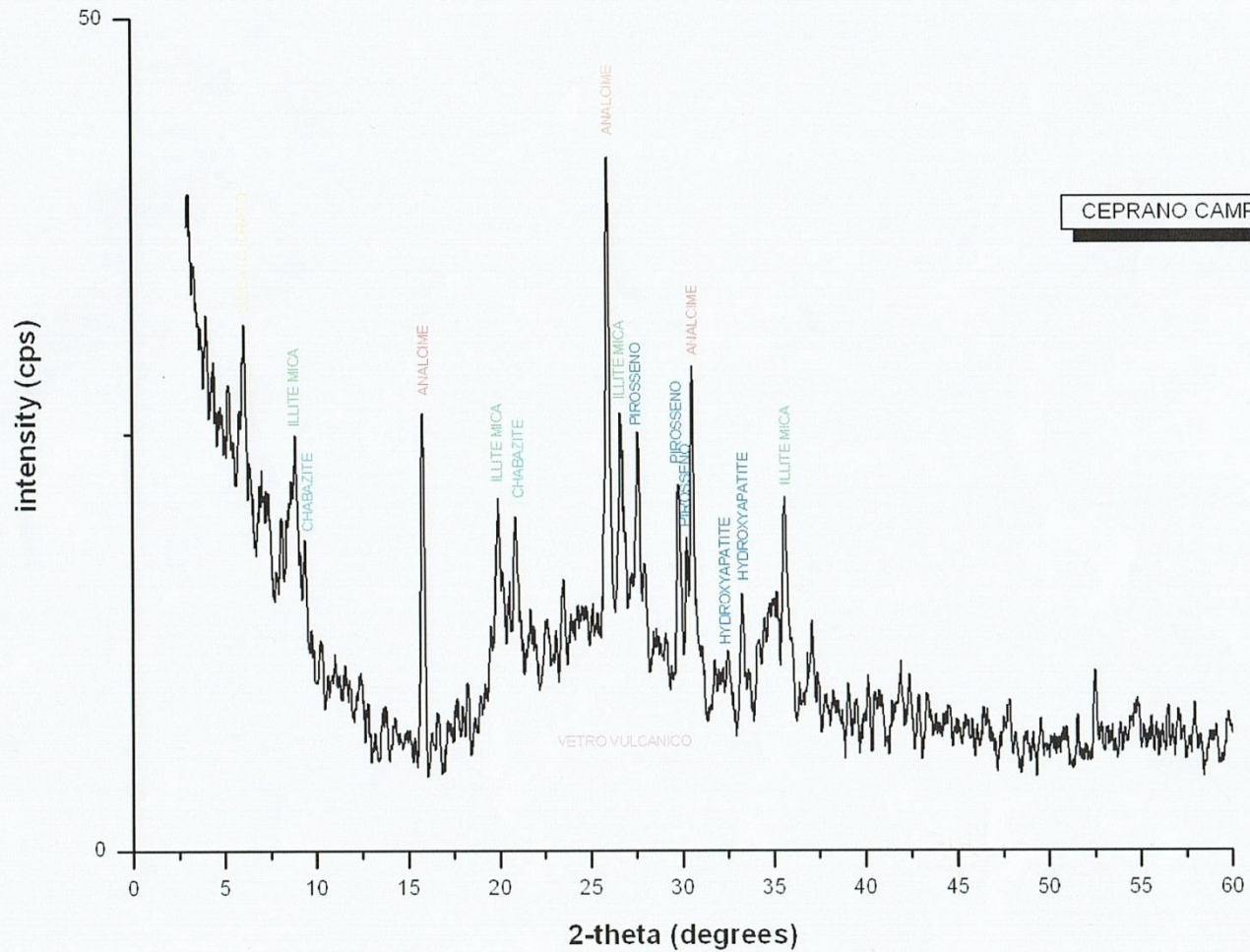
POWDER X-RAY DIFFRACTOMETER (SEIFERT MZ IV)
INSTRUMENTAL CONDITION:
Radiation:Cu-Kalfa,scan step: 0.02°,
time counting:2sec.,monocr. graphite

SAMPLE 7 (23; T trench, Unit 4)

DIPARTIMENTO SCIENZE TERRA - UNIVERSITA' "La Sapienza" - ROMA (ITALY)
(DIFFRACTOMETRY LAB - ANALYST DR S.STELLINO)



SAMPLE 8 (24; T trench, Unit 3)



SAMPLE 9 (26; T trench, Unit 1)

