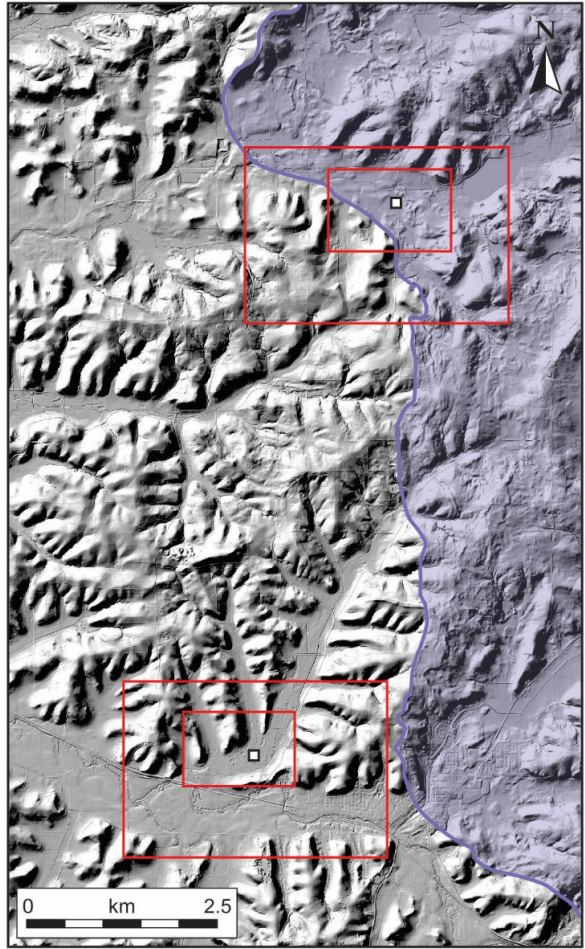
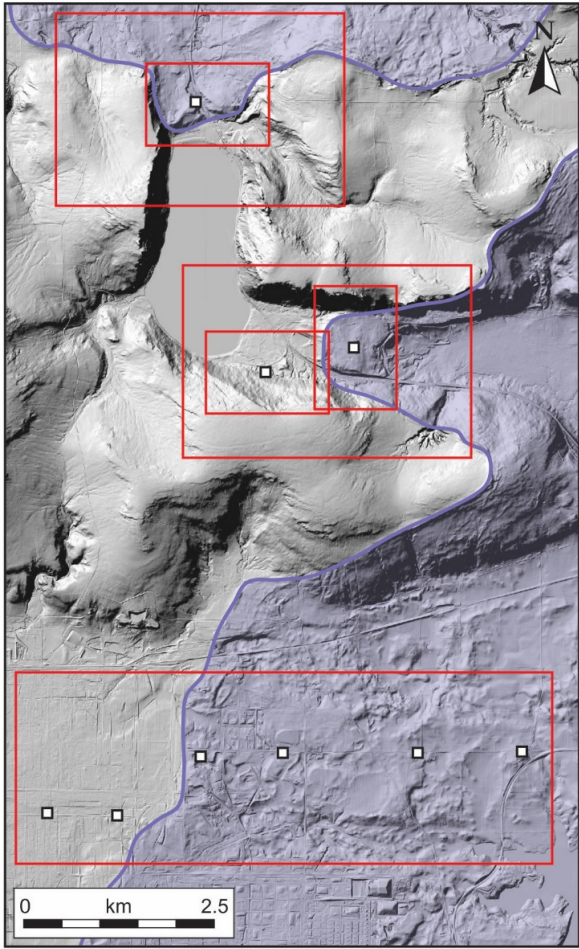


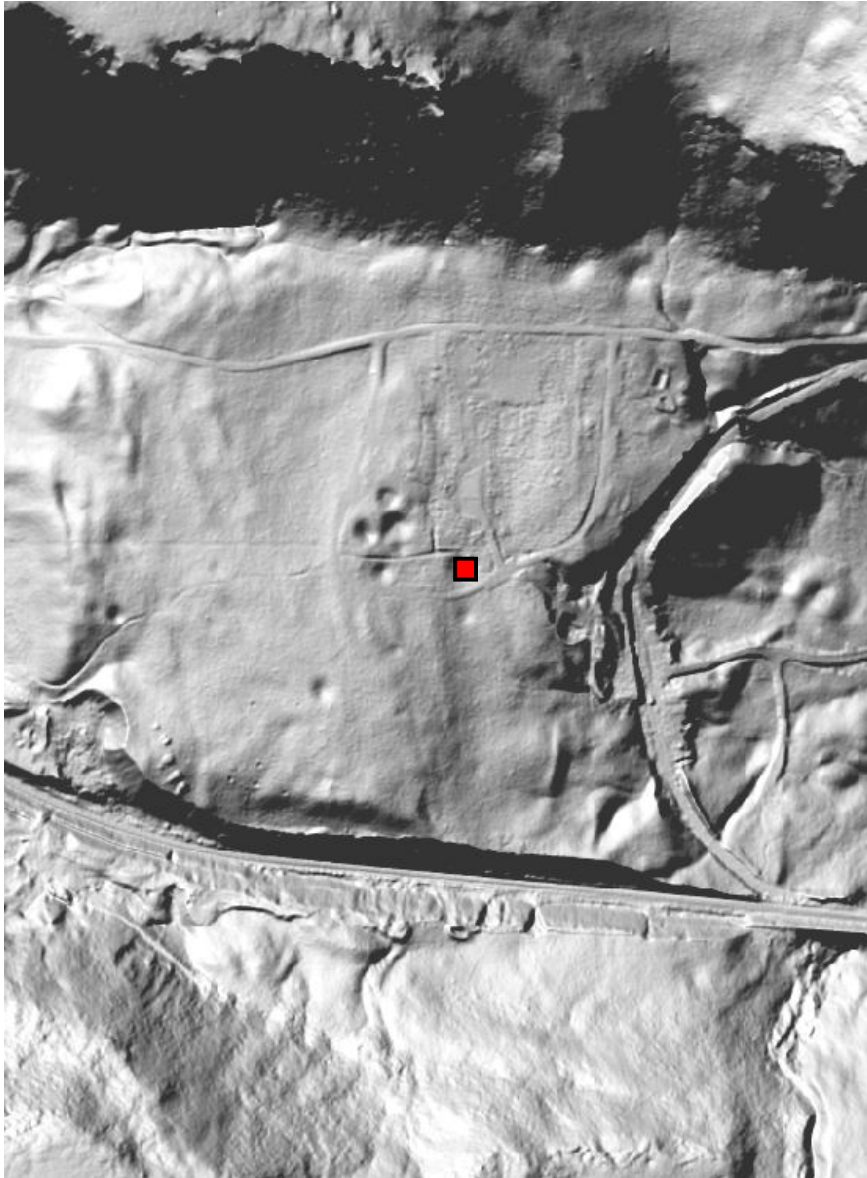
Supplementary Data. Coring data from Black Earth Creek and Baraboo Hills area.

Site Name	Core ID	Latitude (° N)	Longitude (° W)	Depth (m)	Coring Method	Chronologic Data
Old Campground	OCG-1	43.406728	89.721740	8.9	Geoprobe	¹⁴ C, OSL
Old Campground	OCG-3	43.406728	89.721728	8.8	Geoprobe	¹⁴ C
Devils Lake - Johnstown moraine	DLJ-1	43.408965	89.712039	84.0	Rotosonic	OSL
Devils Lake - Johnstown moraine	DLJ-2	43.431841	89.732303	56.5	Rotosonic	--
Badger Army Ammunition	BAA-1	43.369582	89.744114	9.2	Geoprobe	--
Badger Army Ammunition	BAA-2	43.369298	89.738746	9.2	Geoprobe	--
Badger Army Ammunition	BAA-3	43.372951	89.729461	13.7	Geoprobe	--
Badger Army Ammunition	BAA-4	43.372898	89.724406	13.7	Geoprobe	--
Badger Army Ammunition	BAA-5	43.372718	89.710779	13.7	Geoprobe	--
Badger Army Ammunition	BAA-6	43.372866	89.700795	9.2	Geoprobe	--
Halfway Prairie Creek	CRS-3	43.187651	89.645192	16.8	Geoprobe	--
Swamplovers Site	SLS-1	43.120547	89.669498	28.5	Geoprobe	¹⁴ C, OSL *
Swamplovers Site	SLS-12	43.120541	89.669498	15.2	Geoprobe	¹⁴ C

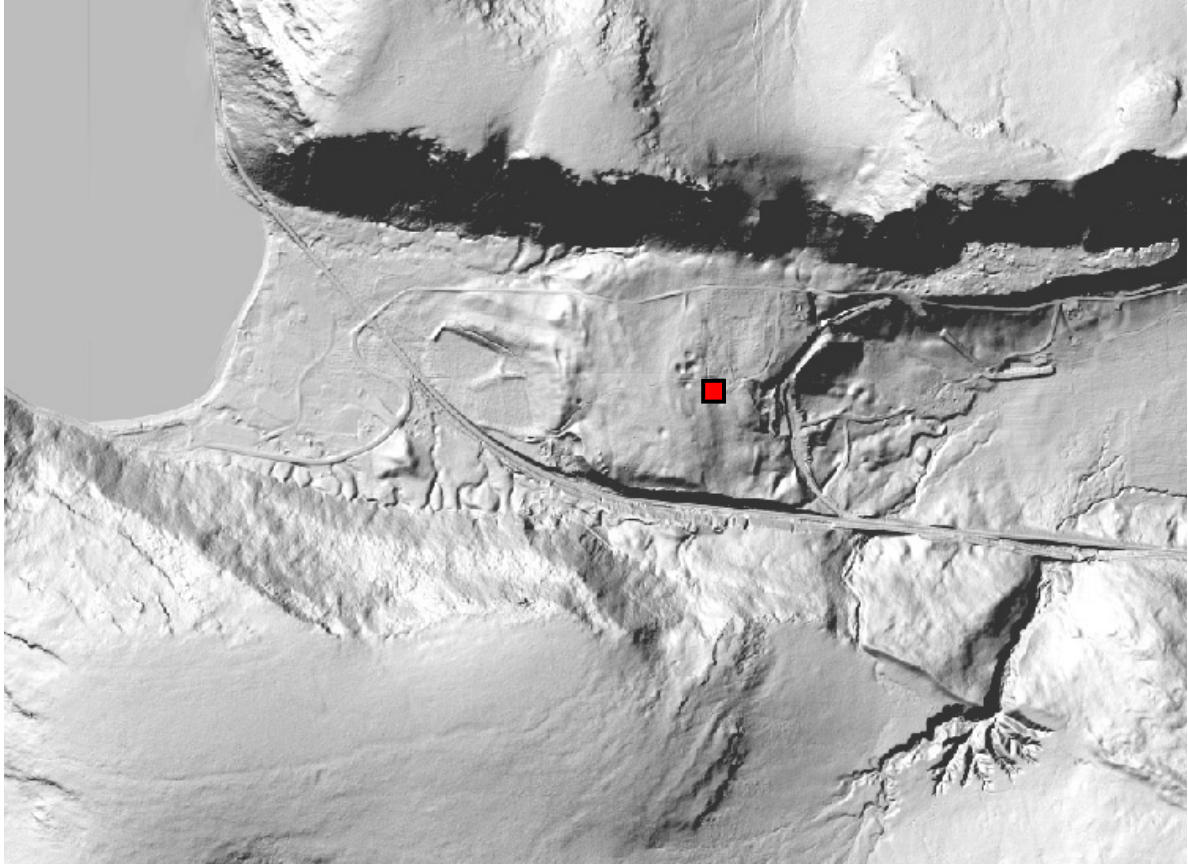
* ¹⁴C and OSL data presented in Carson et al. (2012a) from core SLS-1 and duplicate cores from the same location.



Study areas as depicted in Figure 2, showing locations of detail images of coring sites.



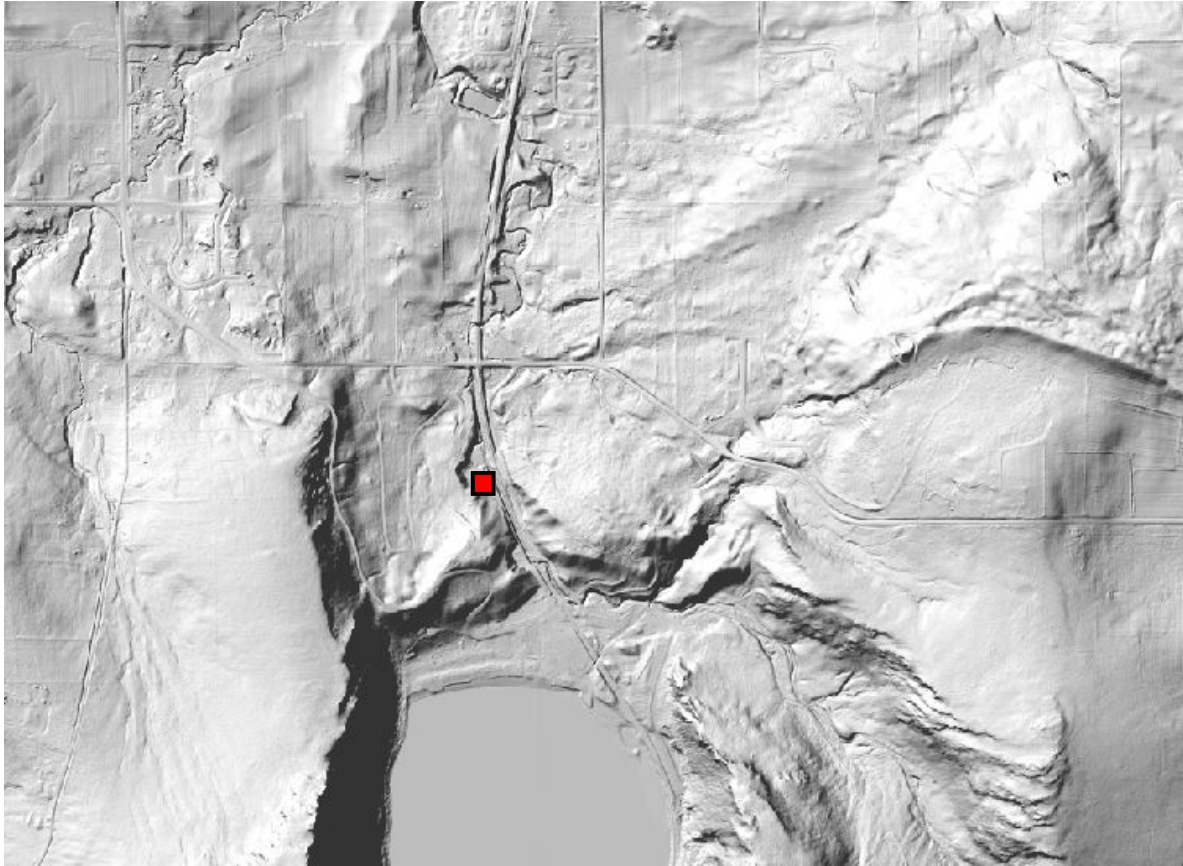
Detail of DLJ-1 coring site.



DLJ-1 coring area.



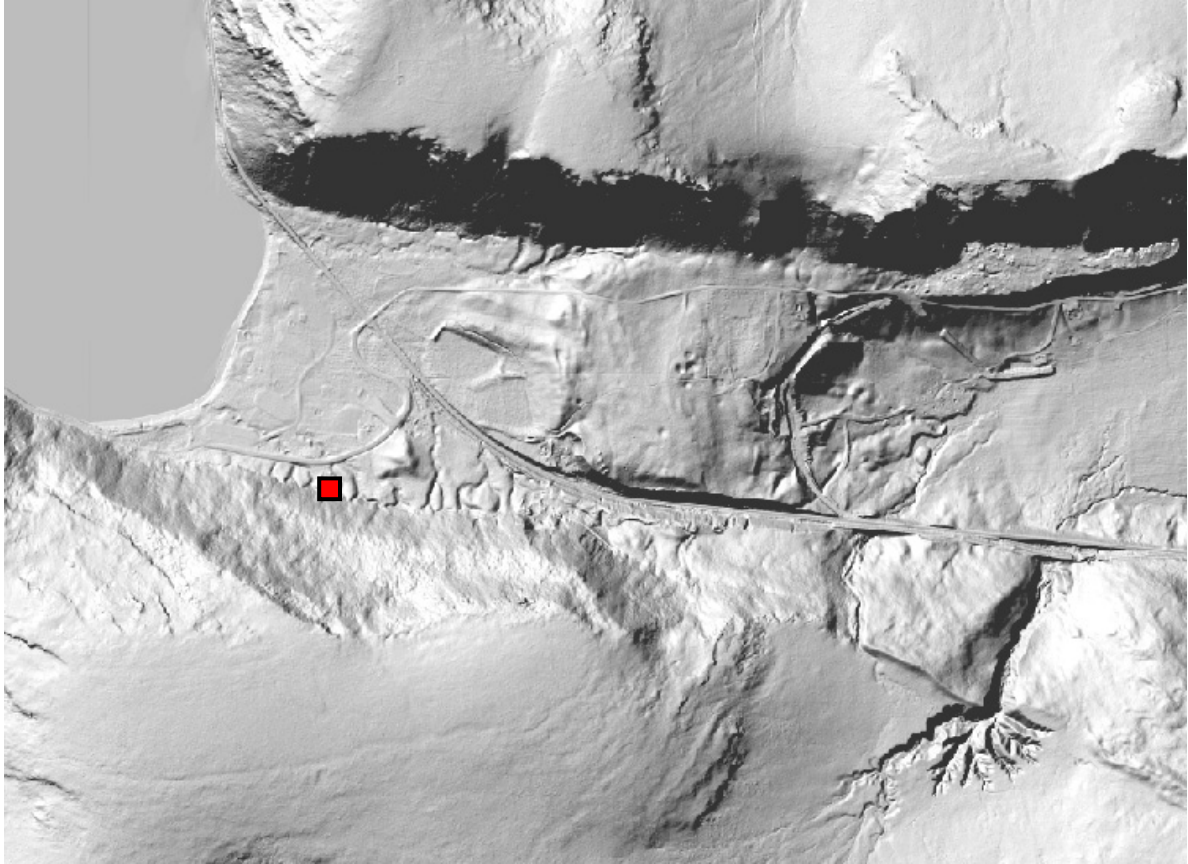
Detail of DLJ-2 coring site.



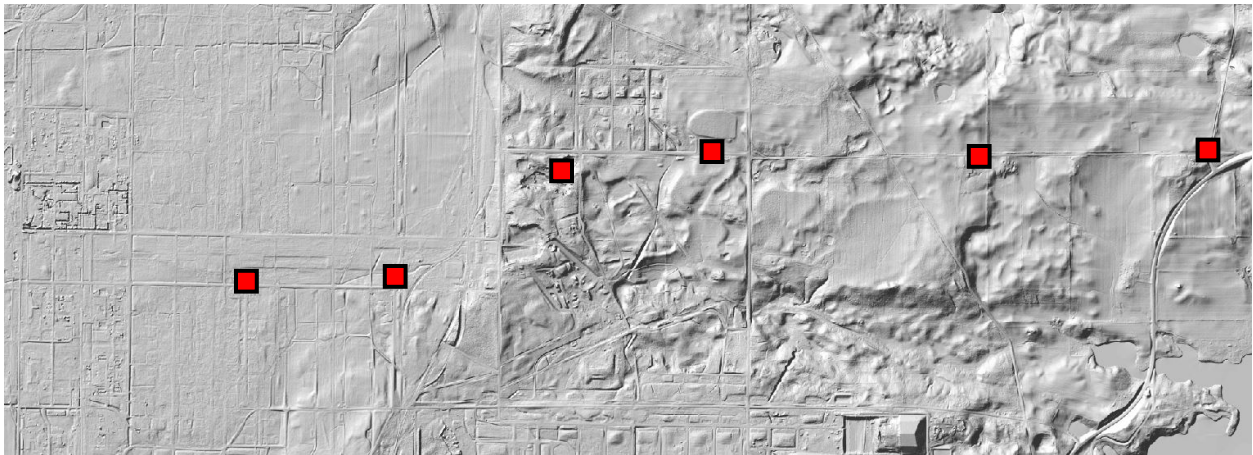
DLJ-2 coring area.



Detail of OCG coring site.



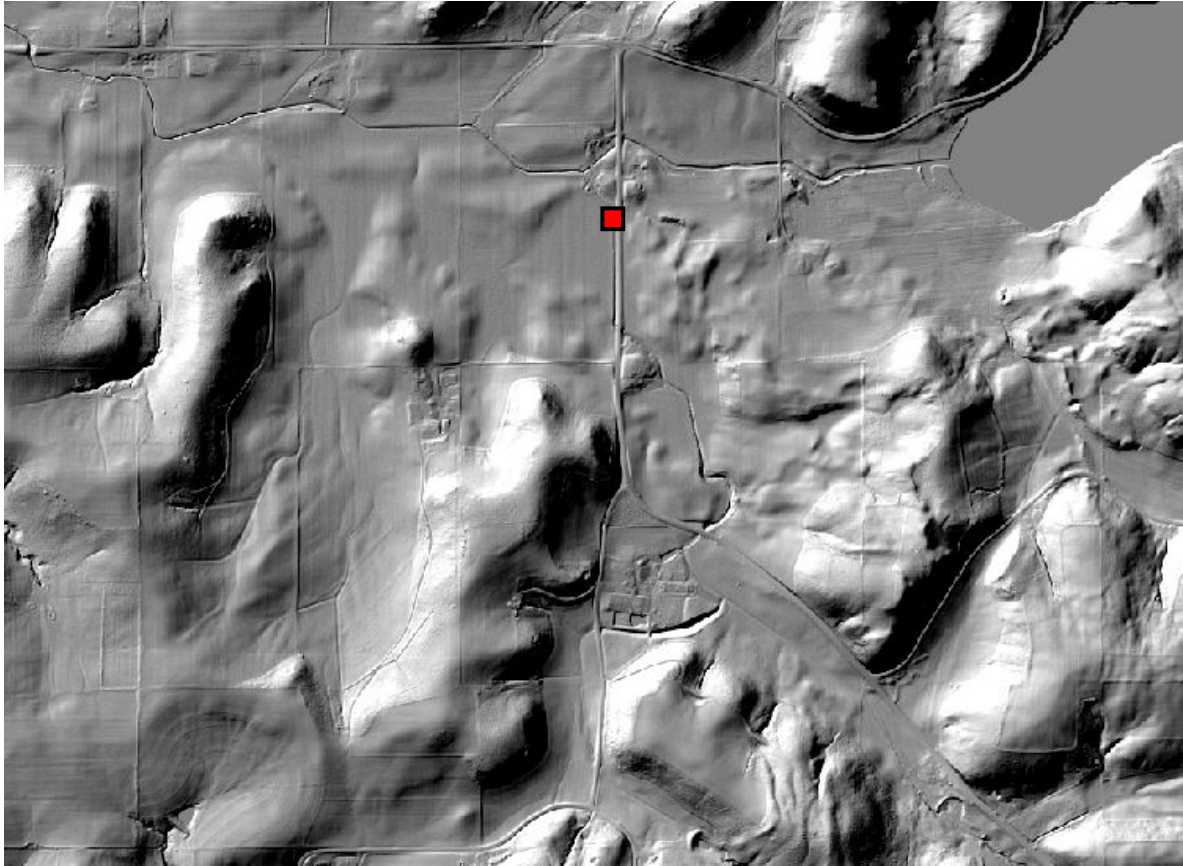
OCG coring area.



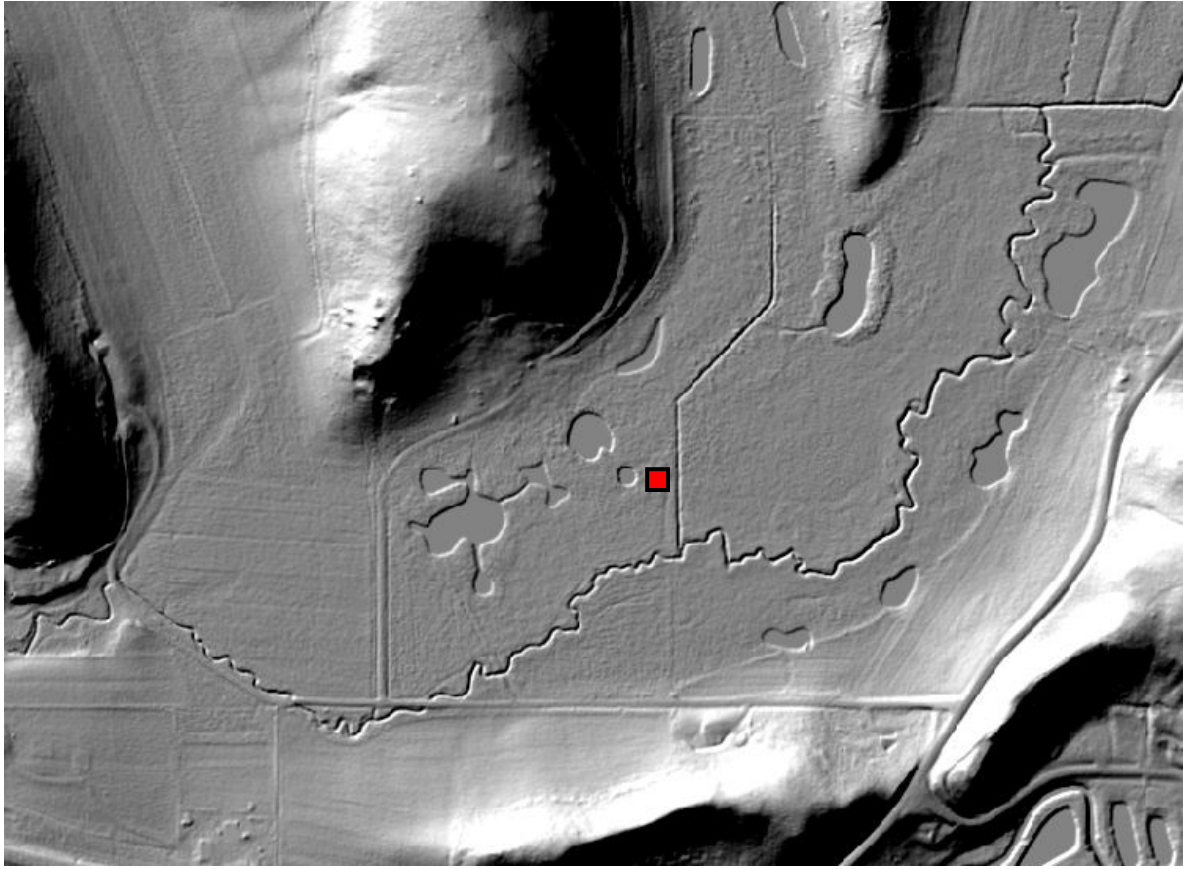
Badger Army Ammunition plant coring area.



Detail of CRS coring site.



CRS coring area.

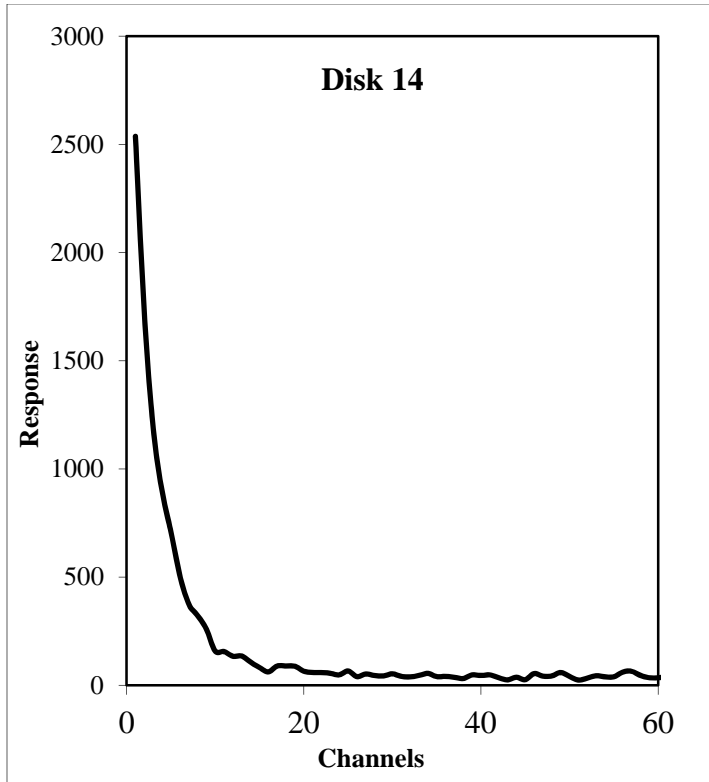


Detail of SLS coring area.

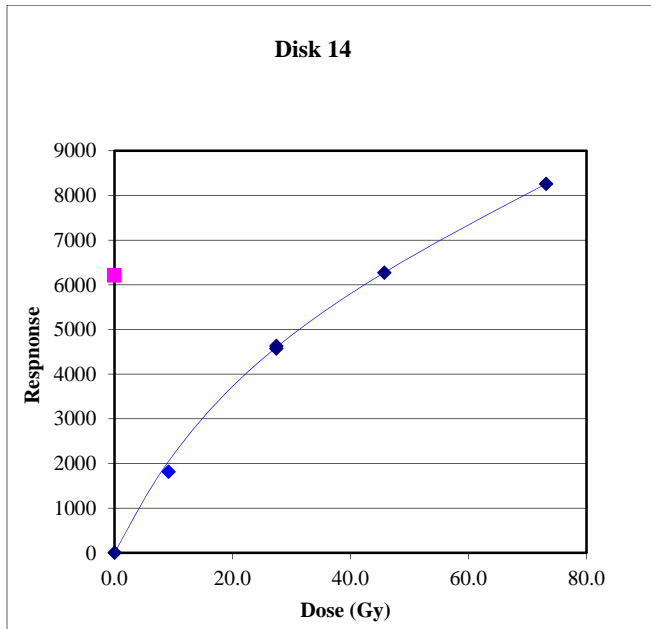


SLS coring area.

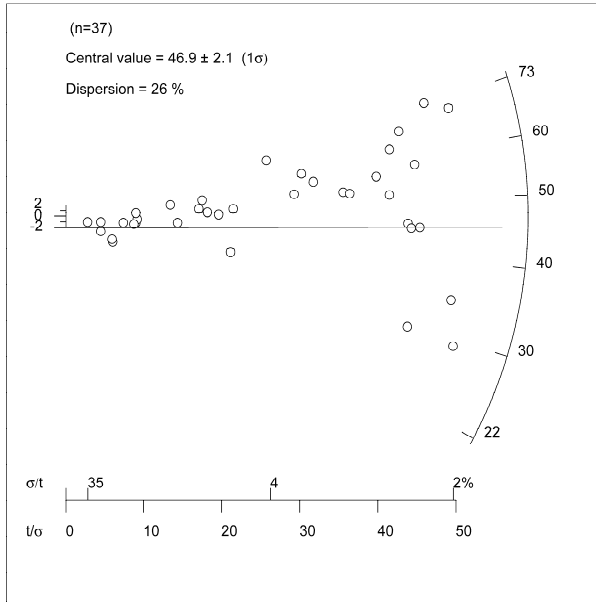
Natural luminescence signal plot for sample UNL-3588



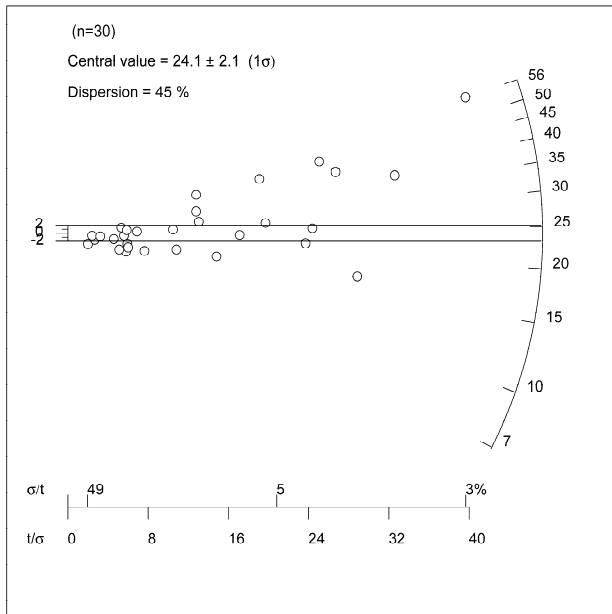
Regenerative growth curve for sample UNL-3588



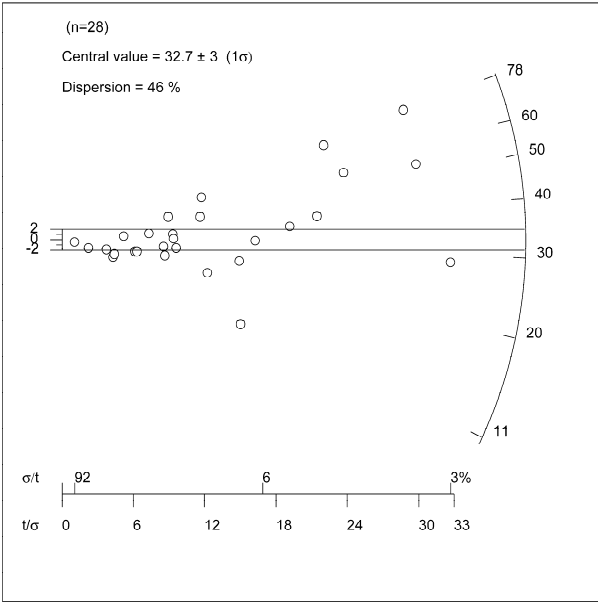
Radial plot for UNL-3588



Radial plot for UNL-3674



Radial plot for UNL-3675



Supplementary Data. Grain-size analyses from coring sites

Site	Depth (cm)	Using 2 μm clay-silt divide			Using 8 μm clay-silt divide		
		% Clay ($< 2 \mu\text{m}$)	% Silt ($2 - 63 \mu\text{m}$)	% Sand ($> 63 \mu\text{m}$)	% Clay ($< 8 \mu\text{m}$)	% Silt ($8 - 63 \mu\text{m}$)	% Sand ($> 63 \mu\text{m}$)
CRS	69	1.72	84.13	14.15	18.97	66.88	14.15
CRS	99	1.66	77.54	20.80	18.10	61.10	20.80
CRS	130	1.79	82.64	15.57	19.97	64.46	15.57
CRS	152	0.58	45.26	54.15	9.16	36.68	54.15
CRS	175	1.22	80.48	18.30	20.38	61.32	18.30
CRS	198	0.89	75.62	23.49	12.26	64.25	23.49
CRS	221	1.53	88.90	9.57	21.62	68.81	9.57
CRS	241	1.78	94.78	3.44	24.10	72.46	3.44
CRS	262	2.18	93.58	4.24	25.20	70.56	4.24
CRS	283	2.27	87.24	10.49	23.28	66.23	10.49
CRS	305	2.60	96.94	0.46	26.00	73.55	0.46
CRS	357	1.95	93.67	4.39	23.33	72.28	4.39
CRS	375	1.80	94.37	3.82	20.49	75.68	3.82
CRS	399	1.64	91.81	6.55	19.24	74.21	6.55
CRS	421	1.77	94.05	4.18	19.95	75.87	4.18
CRS	445	1.57	94.03	4.40	18.15	77.44	4.40
CRS	457	1.74	85.52	12.74	17.85	69.41	12.74
CRS	500	1.63	93.22	5.15	19.42	75.43	5.15
CRS	515	1.64	89.53	8.83	18.02	73.15	8.83
CRS	530	0.86	24.15	74.99	6.95	18.06	74.99
CRS	549	0.99	32.16	66.85	8.51	24.63	66.85
CRS	564	0.51	30.35	69.14	4.76	26.10	69.14
CRS	579	0.30	17.23	82.47	3.16	14.36	82.47
CRS	594	0.30	23.06	76.64	3.49	19.87	76.64
CRS	610	0.33	23.88	75.79	3.78	20.43	75.79
CRS	668	0.82	38.30	60.88	7.91	31.21	60.88
CRS	683	0.43	20.41	79.16	4.44	16.40	79.16
CRS	701	0.44	20.26	79.30	4.72	15.98	79.30
CRS	716	0.62	26.93	72.45	6.26	21.29	72.45
CRS	732	0.27	17.23	82.50	3.46	14.04	82.50
CRS	747	0.18	16.01	83.81	2.68	13.52	83.81
CRS	762	0.53	28.05	71.42	5.98	22.60	71.42
CRS	780	0.29	15.33	84.38	3.52	12.09	84.38
CRS	799	0.26	15.60	84.13	3.25	12.62	84.13
CRS	814	0.23	12.63	87.14	2.56	10.29	87.14
CRS	829	0.10	8.09	91.82	1.78	6.41	91.82
CRS	846	0.26	16.37	83.38	3.21	13.42	83.38
CRS	863	0.12	11.90	87.98	2.00	10.02	87.98
CRS	881	0.46	29.69	69.84	5.49	24.66	69.84
CRS	896	0.38	31.67	67.96	4.59	27.45	67.96
CRS	914	0.38	41.50	58.12	5.56	36.32	58.12
CRS	988	0.14	18.77	81.09	2.44	16.47	81.09

CRS	1006	0.20	18.52	81.29	2.93	15.78	81.29
CRS	1021	0.15	21.32	78.53	2.89	18.58	78.53
CRS	1036	1.06	40.62	58.32	8.80	32.88	58.32
CRS	1052	1.61	56.70	41.68	13.22	45.10	41.68
CRS	1067	1.23	31.23	67.54	8.23	24.23	67.54
CRS	1125	1.08	35.04	63.88	8.66	27.46	63.88
CRS	1140	1.07	43.36	55.58	9.40	35.03	55.58
CRS	1158	0.88	37.86	61.25	7.86	30.89	61.25
CRS	1173	1.94	47.53	50.53	13.31	36.16	50.53
CRS	1189	1.05	28.64	70.31	7.95	21.74	70.31
CRS	1204	1.35	32.93	65.72	9.23	25.05	65.72
CRS	1219	0.62	34.91	64.48	6.82	28.71	64.48
CRS	1234	0.12	10.18	89.70	1.92	8.39	89.70
CRS	1253	0.14	13.41	86.45	2.38	11.17	86.45
CRS	1268	0.41	22.57	77.02	4.67	18.32	77.02
CRS	1283	0.46	28.21	71.33	5.35	23.32	71.33
CRS	1298	1.27	51.95	46.78	12.45	40.77	46.78
CRS	1314	0.90	39.91	59.19	8.81	32.01	59.19
CRS	1329	0.60	21.51	77.89	5.45	16.67	77.89
CRS	1344	1.77	59.20	39.02	16.04	44.94	39.02
CRS	1359	0.62	39.33	60.05	7.29	32.66	60.05
CRS	1372	0.39	28.15	71.46	5.25	23.29	71.46
CRS	1387	0.30	26.17	73.53	3.99	22.48	73.53
CRS	1405	0.09	10.79	89.12	1.71	9.16	89.12
CRS	1420	0.21	15.89	83.90	2.73	13.37	83.90
CRS	1436	0.18	10.51	89.31	2.46	8.23	89.31
CRS	1451	0.01	5.73	94.26	1.18	4.56	94.26
CRS	1466	0.40	26.54	73.05	4.68	22.27	73.05
CRS	1481	0.08	10.07	89.85	1.63	8.52	89.85
CRS	1497	0.40	28.77	70.82	5.34	23.84	70.82
CRS	1512	0.16	9.46	90.39	2.06	7.55	90.39
CRS	1524	0.20	15.53	84.27	2.88	12.85	84.27
CRS	1542	0.51	26.24	73.25	5.21	21.54	73.25
CRS	1558	0.05	6.95	93.00	1.35	5.64	93.00
CRS	1577	0.84	40.77	58.39	8.68	32.93	58.39
CRS	1593	0.28	25.71	74.01	3.41	22.58	74.01
CRS	1609	0.42	28.17	71.41	5.36	23.24	71.41
CRS	1628	0.17	18.56	81.27	2.81	15.92	81.27
CRS	1646	0.14	15.66	84.20	2.45	13.35	84.20
CRS	1661	0.12	12.12	87.76	1.96	10.28	87.76
CRS	1676	0.69	45.19	54.12	7.70	38.18	54.12
DLJ-1	0	5.92	74.93	19.15	23.12	57.73	19.15
DLJ-1	15	5.30	67.61	27.09	20.88	52.03	27.09
DLJ-1	30	6.31	82.89	10.80	25.31	63.88	10.80
DLJ-1	45	6.80	78.75	14.46	26.07	59.48	14.46
DLJ-1	60	9.25	78.21	12.53	29.82	57.64	12.53
DLJ-1	75	8.90	85.32	5.78	30.30	63.93	5.78

DLJ-1	90	8.15	71.02	20.83	27.26	51.91	20.83
DLJ-1	105	8.20	69.12	22.68	31.57	45.75	22.68
DLJ-1	120	9.68	84.57	5.74	31.91	62.35	5.74
DLJ-1	135	9.14	83.38	7.48	28.98	63.53	7.48
DLJ-1	150	7.99	75.08	16.93	27.30	55.77	16.93
DLJ-1	165	8.18	35.24	56.57	20.88	22.54	56.57
DLJ-1	180	11.51	54.27	34.22	31.56	34.22	34.22
DLJ-1	195	12.18	62.04	25.78	33.41	40.81	25.78
DLJ-1	210	11.11	44.53	44.36	30.42	25.22	44.36
DLJ-1	225	9.91	68.24	21.86	30.61	47.53	21.86
DLJ-1	240	7.58	44.96	47.45	22.80	29.74	47.45
DLJ-1	255	7.64	49.44	42.92	24.93	32.14	42.92
DLJ-1	270	9.65	61.46	28.89	30.22	40.89	28.89
DLJ-1	285	8.17	56.89	34.94	26.67	38.39	34.94
DLJ-1	300	6.71	63.79	29.50	24.34	46.16	29.50
DLJ-1	315	14.56	69.77	15.67	38.08	46.25	15.67
DLJ-1	330	11.79	58.92	29.30	33.73	36.97	29.30
DLJ-1	345	12.43	61.68	25.88	33.12	40.99	25.88
DLJ-1	360	11.30	49.63	39.08	29.79	31.13	39.08
DLJ-1	375	13.40	59.09	27.51	34.94	37.55	27.51
DLJ-1	390	10.28	54.53	35.19	28.60	36.21	35.19
DLJ-1	405	6.85	38.40	54.75	19.19	26.06	54.75
DLJ-1	420	5.13	34.11	60.76	14.76	24.48	60.76
DLJ-1	435	6.57	39.75	53.68	18.39	27.92	53.68
DLJ-1	450	5.02	32.84	62.13	15.41	22.45	62.13
DLJ-1	465	4.90	31.83	63.27	14.94	21.78	63.27
DLJ-1	480	5.76	39.79	54.45	17.43	28.12	54.45
DLJ-1	495	2.03	15.37	82.60	6.56	10.83	82.60
DLJ-1	510	1.76	13.71	84.53	5.67	9.80	84.53
DLJ-1	525	9.69	56.45	33.86	26.94	39.20	33.86
DLJ-1	540	9.66	57.65	32.70	27.16	40.14	32.70
DLJ-1	555	6.41	40.38	53.21	18.77	28.01	53.21
DLJ-1	570	6.53	43.60	49.87	19.47	30.66	49.87
DLJ-1	585	3.01	21.29	75.70	9.10	15.21	75.70
DLJ-1	600	3.21	21.41	75.39	9.52	15.09	75.39
DLJ-1	615	6.71	36.32	56.96	17.50	25.53	56.96
DLJ-1	630	6.75	37.80	55.45	18.69	25.86	55.45
DLJ-1	645	5.38	34.56	60.06	15.65	24.29	60.06
DLJ-1	660	4.72	30.03	65.25	13.87	20.88	65.25
DLJ-1	675	1.69	11.23	87.08	5.20	7.72	87.08
DLJ-1	690	6.61	47.43	45.96	19.35	34.69	45.96
DLJ-1	705	6.53	65.96	27.51	19.58	52.91	27.51
DLJ-1	720	5.52	47.89	46.59	16.26	37.15	46.59
DLJ-1	735	3.73	29.81	66.46	11.16	22.38	66.46
DLJ-1	750	3.10	15.42	81.48	8.69	9.82	81.48
DLJ-1	765	2.30	19.30	78.40	5.95	15.65	78.40
DLJ-1	780	2.86	21.07	76.07	8.08	15.84	76.07

DLJ-1	795	3.61	37.68	58.72	9.22	32.07	58.72
DLJ-1	810	2.64	45.73	51.63	6.73	41.64	51.63
DLJ-1	825	1.41	9.48	89.11	4.16	6.73	89.11
DLJ-1	840	2.27	18.07	79.66	6.92	13.41	79.66
DLJ-1	855	0.00	95.98	4.02	1.48	94.50	4.02
DLJ-1	870	1.85	17.90	80.25	6.17	13.58	80.25
DLJ-1	885	1.84	16.54	81.62	5.94	12.44	81.62
DLJ-1	900	0.58	6.93	92.49	2.08	5.43	92.49
DLJ-1	915	0.64	8.32	91.04	2.30	6.67	91.04
DLJ-1	930	0.00	2.06	97.94	0.01	2.05	97.94
DLJ-1	945	1.34	14.06	84.60	4.27	11.14	84.60
DLJ-1	960	0.50	3.69	95.81	1.74	2.45	95.81
DLJ-1	975	0.08	3.60	96.32	0.64	3.04	96.32
DLJ-1	990	0.31	5.45	94.25	1.45	4.30	94.25
DLJ-1	1005	5.38	63.31	31.32	10.63	58.05	31.32
DLJ-1	1020	1.83	22.32	75.85	6.45	17.69	75.85
DLJ-1	1035	3.85	29.98	66.17	11.28	22.55	66.17
DLJ-1	1050	7.51	55.44	37.05	24.84	38.12	37.05
DLJ-1	1065	3.41	26.04	70.55	11.48	17.97	70.55
DLJ-1	1080	6.47	39.05	54.48	19.82	25.70	54.48
DLJ-1	1095	4.25	25.69	70.05	12.79	17.16	70.05
DLJ-1	1110	7.07	37.39	55.54	20.74	23.72	55.54
DLJ-1	1125	10.46	54.20	35.34	29.99	34.67	35.34
DLJ-1	1140	5.14	24.59	70.28	14.02	15.71	70.28
DLJ-1	1155	10.10	42.26	47.64	26.42	25.94	47.64
DLJ-1	1170	7.82	37.54	54.63	20.44	24.92	54.63
DLJ-1	1185	5.75	36.72	57.53	14.83	27.64	57.53
DLJ-1	1200	6.79	29.65	63.55	16.46	19.99	63.55
DLJ-1	1215	10.08	49.69	40.24	25.01	34.76	40.24
DLJ-1	1230	0.82	5.52	93.66	2.49	3.85	93.66
DLJ-1	1245	3.29	19.78	76.93	8.74	14.33	76.93
DLJ-1	1260	2.32	14.31	83.37	6.11	10.52	83.37
DLJ-1	1275	2.87	14.41	82.71	7.50	9.79	82.71
DLJ-1	1290	3.37	17.23	79.40	8.60	11.99	79.40
DLJ-1	1305	1.63	8.67	89.70	4.41	5.88	89.70
DLJ-1	1320	1.92	11.34	86.74	5.13	8.12	86.74
DLJ-1	1335	5.91	34.86	59.23	15.14	25.63	59.23
DLJ-1	1350	4.42	41.71	53.88	17.35	28.77	53.88
DLJ-1	1365	2.87	16.87	80.26	8.28	11.46	80.26
DLJ-1	1380	1.00	7.65	91.35	3.32	5.34	91.35
DLJ-1	1395	1.02	7.79	91.19	3.19	5.62	91.19
DLJ-1	1410	2.87	16.43	80.70	7.71	11.59	80.70
DLJ-1	1425	2.15	15.24	82.61	6.25	11.15	82.61
DLJ-1	1440	7.67	57.28	35.04	22.71	42.25	35.04
DLJ-1	1455	3.35	20.48	76.17	9.28	14.55	76.17
DLJ-1	1470	2.25	15.95	81.80	6.71	11.50	81.80
DLJ-1	1485	2.55	22.63	74.82	7.65	17.53	74.82

DLJ-1	1500	4.99	38.05	56.95	14.27	28.78	56.95
DLJ-1	1515	5.79	30.98	63.23	15.03	21.74	63.23
DLJ-1	1530	12.40	58.64	28.96	31.08	39.97	28.96
DLJ-1	1545	5.98	33.05	60.97	15.55	23.49	60.97
DLJ-1	1560	6.80	33.17	60.03	17.05	22.91	60.03
DLJ-1	1575	10.83	53.89	35.28	27.54	37.18	35.28
DLJ-1	1590	5.84	36.17	58.00	16.17	25.83	58.00
DLJ-1	1605	5.16	37.48	57.36	15.50	27.14	57.36
DLJ-1	1620	8.62	44.90	46.47	23.06	30.47	46.47
DLJ-1	1635	9.37	51.49	39.14	25.06	35.79	39.14
DLJ-1	1650	1.57	15.95	82.48	5.13	12.39	82.48
DLJ-1	1665	2.08	19.05	78.87	6.74	14.39	78.87
DLJ-1	1680	3.05	25.85	71.10	9.41	19.49	71.10
DLJ-1	1695	1.53	14.15	84.33	5.04	10.64	84.33
DLJ-1	1710	5.04	37.25	57.71	14.88	27.41	57.71
DLJ-1	1725	2.32	21.56	76.12	7.13	16.75	76.12
DLJ-1	1740	5.97	41.33	52.70	17.21	30.09	52.70
DLJ-1	1755	2.00	10.98	87.02	5.41	7.57	87.02
DLJ-1	1770	4.35	31.64	64.00	12.42	23.58	64.00
DLJ-1	1785	6.73	36.00	57.27	17.87	24.86	57.27
DLJ-1	1810	1.83	15.45	82.72	5.96	11.31	82.72
DLJ-1	1815	5.38	44.98	49.64	16.48	33.88	49.64
DLJ-1	1830	1.75	16.06	82.19	5.67	12.14	82.19
DLJ-1	1845	0.79	9.46	89.75	2.92	7.33	89.75
DLJ-1	1860	4.10	38.47	57.42	12.71	29.86	57.42
DLJ-1	1875	2.67	24.68	72.65	8.34	19.02	72.65
DLJ-1	1890	2.45	20.49	77.06	7.70	15.24	77.06
DLJ-1	1905	2.62	14.64	82.74	7.22	10.05	82.74
DLJ-1	1920	1.00	11.09	87.91	3.51	8.58	87.91
DLJ-1	1935	1.39	9.86	88.74	4.47	6.79	88.74
DLJ-1	1950	4.03	24.28	71.69	11.71	16.60	71.69
DLJ-1	1965	0.32	4.66	95.03	0.00	0.00	95.03
DLJ-1	1980	2.02	15.19	82.79	6.10	11.11	82.79
DLJ-1	1995	1.91	15.34	82.75	5.86	11.39	82.75
DLJ-1	2010	3.92	36.28	59.80	12.02	28.18	59.80
DLJ-1	2025	1.25	10.25	88.51	4.02	7.47	88.51
DLJ-1	2040	1.27	13.98	84.75	4.20	11.06	84.75
DLJ-1	2055	1.01	7.84	91.15	3.39	5.46	91.15
DLJ-1	2070	1.27	9.13	89.60	4.08	6.32	89.60
DLJ-1	2085	0.86	7.52	91.63	2.90	5.48	91.63
DLJ-1	2100	3.47	28.21	68.31	10.08	21.60	68.31
DLJ-1	2115	5.97	40.39	53.64	17.11	29.25	53.64
DLJ-1	2130	2.34	10.61	87.05	6.82	6.14	87.05
DLJ-1	2145	0.50	6.81	92.70	2.08	5.22	92.70
DLJ-1	2160	0.60	7.38	92.03	2.07	5.90	92.03
DLJ-1	2175	0.37	6.42	93.21	1.39	5.40	93.21
DLJ-1	2190	0.24	4.42	95.34	1.22	3.44	95.34

DLJ-1	2205	0.38	6.44	93.18	1.61	5.21	93.18
DLJ-1	2220	1.39	14.12	84.48	4.43	11.08	84.48
DLJ-1	2235	0.61	8.78	90.61	2.35	7.04	90.61
DLJ-1	2250	3.17	25.90	70.92	9.39	19.69	70.92
DLJ-1	2265	0.97	9.40	89.63	3.34	7.02	89.63
DLJ-1	2280	1.30	11.30	87.40	4.26	8.34	87.40
DLJ-1	2295	2.06	16.41	81.53	6.14	12.33	81.53
DLJ-1	2310	1.50	11.45	87.05	4.63	8.31	87.05
DLJ-1	2325	1.38	10.09	88.53	4.10	7.37	88.53
DLJ-1	2340	1.76	14.16	84.08	5.19	10.73	84.08
DLJ-1	2355	2.50	18.72	78.79	7.61	13.60	78.79
DLJ-1	2370	1.23	14.08	84.68	3.99	11.32	84.68
DLJ-1	2385	1.86	26.54	71.60	5.49	22.91	71.60
DLJ-1	2400	1.66	27.82	70.51	4.69	24.80	70.51
DLJ-1	2415	1.69	26.94	71.37	4.91	23.72	71.37
DLJ-1	2430	2.95	36.96	60.09	8.65	31.27	60.09
DLJ-1	2445	2.41	23.06	74.53	7.14	18.33	74.53
DLJ-1	2460	2.15	24.29	73.55	6.46	19.99	73.55
DLJ-1	2475	1.03	14.13	84.85	3.62	11.53	84.85
DLJ-1	2490	1.69	15.31	83.00	5.64	11.37	83.00
DLJ-1	2505	0.98	9.65	89.37	3.56	7.07	89.37
DLJ-1	2535	2.27	15.71	82.03	7.06	10.91	82.03
DLJ-1	2520	1.15	11.83	87.03	4.10	8.87	87.03
DLJ-1	2550	3.47	23.47	73.06	9.81	17.13	73.06
DLJ-1	2565	1.59	11.84	86.58	4.89	8.54	86.58
DLJ-1	2580	2.21	15.54	82.25	6.39	11.36	82.25
DLJ-1	2595	2.34	19.93	77.72	6.88	15.40	77.72
DLJ-1	2610	2.52	24.54	72.94	7.67	19.38	72.94
DLJ-1	2625	0.89	7.26	91.85	2.91	5.24	91.85
DLJ-1	2640	2.99	20.98	76.04	8.72	15.24	76.04
DLJ-1	2655	0.92	7.55	91.53	3.10	5.37	91.53
DLJ-1	2670	0.00	2.01	97.99	0.07	1.94	97.99
DLJ-1	2685	0.00	1.78	98.22	0.01	1.77	98.22
DLJ-1	2700	0.09	3.59	96.32	0.64	3.04	96.32
DLJ-1	2715	1.21	15.20	83.59	4.02	12.39	83.59
DLJ-1	2730	0.80	12.61	86.58	2.76	10.66	86.58
DLJ-1	2745	1.21	15.52	83.28	3.88	12.84	83.28
DLJ-1	2760	0.38	12.14	87.48	1.80	10.72	87.48
DLJ-1	2775	0.86	8.51	90.63	2.82	6.55	90.63
DLJ-1	2790	1.41	11.75	86.85	4.48	8.68	86.85
DLJ-1	2805	1.18	9.80	89.02	3.94	7.03	89.02
DLJ-1	2820	1.76	21.36	76.89	5.61	17.50	76.89
DLJ-1	2835	0.19	6.01	93.81	1.32	4.87	93.81
DLJ-1	2850	3.17	30.91	65.92	9.89	24.19	65.92
DLJ-1	2865	1.30	10.16	88.54	3.97	7.49	88.54
DLJ-1	2880	0.59	5.68	93.73	2.13	4.14	93.73
DLJ-1	2895	5.00	25.52	69.48	13.87	16.65	69.48

DLJ-1	2910	0.45	6.34	93.22	1.83	4.95	93.22
DLJ-1	2925	2.35	11.54	86.12	6.77	7.11	86.12
DLJ-1	2940	3.41	18.79	77.80	9.60	12.60	77.80
DLJ-1	2955	2.38	10.94	86.69	7.01	6.31	86.69
DLJ-1	2970	2.03	12.61	85.36	6.02	8.62	85.36
DLJ-1	2985	0.39	4.70	94.92	1.65	3.43	94.92
DLJ-1	3000	3.66	30.08	66.26	11.73	22.01	66.26
DLJ-1	3015	2.59	20.53	76.88	7.93	15.19	76.88
DLJ-1	3030	1.48	11.76	86.76	4.72	8.52	86.76
DLJ-1	3045	2.46	47.07	50.47	6.69	42.83	50.47
DLJ-1	3060	0.82	11.96	87.22	2.81	9.97	87.22
DLJ-1	3075	1.73	19.34	78.93	5.73	15.35	78.93
DLJ-1	3090	1.03	11.90	87.07	3.42	9.51	87.07
DLJ-1	3105	0.86	9.36	89.78	2.94	7.29	89.78
DLJ-1	3120	0.00	1.49	98.51	0.03	1.46	98.51
DLJ-1	3135	0.08	3.79	96.13	0.79	3.08	96.13
DLJ-1	3150	0.35	5.68	93.98	1.63	4.40	93.98
DLJ-1	3165	0.65	4.94	94.41	2.08	3.51	94.41
DLJ-1	3180	2.64	13.37	84.00	7.01	9.00	84.00
DLJ-1	3195	4.79	29.12	66.09	14.07	19.84	66.09
DLJ-1	3210	6.70	28.65	64.65	17.51	17.84	64.65
DLJ-1	3225	6.78	36.60	56.62	19.16	24.22	56.62
DLJ-1	3240	6.84	33.31	59.85	18.40	21.75	59.85
DLJ-1	3255	0.76	5.10	94.14	2.40	3.46	94.14
DLJ-1	3270	2.56	15.90	81.54	6.84	11.62	81.54
DLJ-1	3285	1.63	9.30	89.07	4.52	6.41	89.07
DLJ-1	3300	0.94	8.76	90.30	3.08	6.62	90.30
DLJ-1	3315	2.16	20.54	77.29	6.82	15.88	77.29
DLJ-1	3330	0.51	4.30	95.19	1.85	2.97	95.19
DLJ-1	3345	2.03	15.08	82.89	6.03	11.08	82.89
DLJ-1	3360	0.88	8.37	90.75	3.02	6.23	90.75
DLJ-1	3375	1.16	13.30	85.54	3.85	10.61	85.54
DLJ-1	3390	0.13	3.92	95.96	0.90	3.14	95.96
DLJ-1	3405	1.10	10.21	88.69	3.70	7.61	88.69
DLJ-1	3420	4.04	22.58	73.38	11.08	15.54	73.38
DLJ-1	3435	3.28	17.22	79.50	8.80	11.70	79.50
DLJ-1	3450	3.39	16.12	80.49	8.83	10.67	80.49
DLJ-1	3465	1.00	9.16	89.83	3.30	6.86	89.83
DLJ-1	3480	1.53	12.26	86.22	4.78	9.00	86.22
DLJ-1	3495	2.93	23.77	73.30	8.55	18.15	73.30
DLJ-1	3510	0.78	7.40	91.82	2.58	5.60	91.82
DLJ-1	3525	0.82	7.06	92.13	2.61	5.26	92.13
DLJ-1	3540	0.26	5.68	94.06	1.33	4.61	94.06
DLJ-1	3555	2.22	17.32	80.46	6.64	12.91	80.46
DLJ-1	3570	1.64	13.00	85.36	5.30	9.34	85.36
DLJ-1	3585	3.10	22.53	74.36	9.33	16.30	74.36
DLJ-1	3600	1.21	12.13	86.66	4.00	9.34	86.66

DLJ-1	3615	1.74	16.42	81.83	4.94	13.23	81.83
DLJ-1	3630	4.77	37.42	57.81	13.89	28.30	57.81
DLJ-1	3645	0.90	11.71	87.40	3.18	9.42	87.40
DLJ-1	3660	1.79	14.40	83.81	5.48	10.71	83.81
DLJ-1	3675	0.36	4.04	95.59	1.59	2.81	95.59
DLJ-1	3690	1.13	10.77	88.10	3.88	8.03	88.10
DLJ-1	3705	0.67	6.98	92.35	2.33	5.32	92.35
DLJ-1	3720	0.66	6.65	92.69	2.31	5.00	92.69
DLJ-1	3735	0.59	6.76	92.65	2.10	5.25	92.65
DLJ-1	3750	1.12	9.80	89.09	3.50	7.41	89.09
DLJ-1	3765	0.94	5.60	93.46	2.89	3.66	93.46
DLJ-1	3780	2.72	18.20	79.08	7.71	13.21	79.08
DLJ-1	3795	2.98	16.37	80.65	7.98	11.37	80.65
DLJ-1	3810	0.45	3.85	95.70	1.67	2.63	95.70
DLJ-1	3825	1.63	9.22	89.15	4.60	6.25	89.15
DLJ-1	3840	1.52	6.72	91.76	4.04	4.19	91.76
DLJ-1	3855	0.13	2.71	97.16	0.68	2.16	97.16
DLJ-1	3870	3.77	21.07	75.17	9.78	15.05	75.17
DLJ-1	3885	1.49	6.05	92.46	3.99	3.56	92.46
DLJ-1	3900	1.86	9.83	88.31	5.10	6.59	88.31
DLJ-1	3915	0.84	7.03	92.13	2.50	5.36	92.13
DLJ-1	3930	2.17	10.21	87.62	5.73	6.65	87.62
DLJ-1	3945	1.13	5.37	93.50	3.56	2.94	93.50
DLJ-1	3960	0.47	4.36	95.17	1.94	2.89	95.17
DLJ-1	3975	0.34	2.85	96.81	1.21	1.98	96.81
DLJ-1	3990	2.89	22.82	74.30	8.60	17.10	74.30
DLJ-1	4005	2.95	26.44	70.61	8.74	20.65	70.61
DLJ-1	4020	5.10	32.84	62.06	14.71	23.23	62.06
DLJ-1	4035	3.96	34.54	61.51	11.66	26.83	61.51
DLJ-1	4050	1.24	12.37	86.39	4.01	9.60	86.39
DLJ-1	4065	3.33	19.66	77.01	9.24	13.75	77.01
DLJ-1	4080	0.68	16.06	83.26	2.71	14.03	83.26
DLJ-1	4095	2.31	14.68	83.02	6.39	10.59	83.02
DLJ-1	4110	2.79	23.78	73.43	11.11	15.46	73.43
DLJ-1	4125	3.04	14.10	82.87	7.66	9.48	82.87
DLJ-1	4140	4.20	24.82	70.98	11.46	17.57	70.98
DLJ-1	4155	4.67	24.65	70.68	13.08	16.24	70.68
DLJ-1	4170	1.37	9.94	88.70	4.13	7.17	88.70
DLJ-1	4185	7.76	46.65	45.59	21.16	33.26	45.59
DLJ-1	4200	3.16	15.55	81.29	8.42	10.29	81.29
DLJ-1	4215	5.38	33.73	60.89	15.75	23.36	60.89
DLJ-1	4230	3.93	26.62	69.45	11.29	19.26	69.45
DLJ-1	4245	0.71	12.26	87.03	2.66	10.31	87.03
DLJ-1	4260	3.97	20.52	75.51	10.39	14.11	75.51
DLJ-1	4275	0.29	4.48	95.23	1.41	3.36	95.23
DLJ-1	4290	3.30	22.51	74.18	9.58	16.24	74.18
DLJ-1	4305	2.42	17.10	80.48	7.14	12.38	80.48

DLJ-1	4320	5.14	31.82	63.04	14.26	22.70	63.04
DLJ-1	4335	5.35	27.32	67.33	13.69	18.98	67.33
DLJ-1	4350	1.66	15.34	83.00	5.29	11.71	83.00
DLJ-1	4365	2.66	21.58	75.76	8.32	15.92	75.76
DLJ-1	4380	1.52	12.37	86.10	4.93	8.97	86.10
DLJ-1	4395	2.06	19.63	78.31	6.67	15.02	78.31
DLJ-1	4410	1.85	17.54	80.62	5.88	13.50	80.62
DLJ-1	4420	1.85	17.75	80.40	5.95	13.65	80.40
DLJ-1	4425	3.83	16.10	80.07	9.61	10.33	80.07
DLJ-1	4440	2.73	29.60	67.67	8.50	23.83	67.67
DLJ-1	4455	2.22	15.76	82.01	6.67	11.31	82.01
DLJ-1	4485	0.88	10.15	88.96	3.12	7.92	88.96
DLJ-1	4500	1.19	13.32	85.48	4.03	10.49	85.48
DLJ-1	4515	2.42	15.16	82.42	6.91	10.66	82.42
DLJ-1	4530	2.12	11.40	86.48	5.93	7.58	86.48
DLJ-1	4545	3.25	20.95	75.80	9.45	14.75	75.80
DLJ-1	4560	4.02	26.12	69.87	11.67	18.46	69.87
DLJ-1	4575	1.69	14.32	83.99	5.34	10.68	83.99
DLJ-1	4590	1.34	10.56	88.11	4.23	7.66	88.11
DLJ-1	4605	4.67	27.74	67.58	13.08	19.34	67.58
DLJ-1	4620	4.93	32.73	62.34	13.76	23.90	62.34
DLJ-1	4635	4.04	31.51	64.46	12.29	23.25	64.46
DLJ-1	4650	0.51	6.21	93.27	2.25	4.47	93.27
DLJ-1	4665	1.02	9.77	89.21	3.65	7.14	89.21
DLJ-1	4680	0.57	3.14	96.29	1.88	1.83	96.29
DLJ-1	4695	0.43	3.48	96.09	1.65	2.26	96.09
DLJ-1	4710	0.00	1.33	98.67	0.08	1.25	98.67
DLJ-1	4725	0.68	6.20	93.12	2.13	4.75	93.12
DLJ-1	4740	0.81	8.39	90.80	2.75	6.45	90.80
DLJ-1	4755	2.91	30.00	67.10	8.82	24.08	67.10
DLJ-1	4770	2.37	24.12	73.50	7.26	19.24	73.50
DLJ-1	4785	2.87	29.31	67.82	8.67	23.51	67.82
DLJ-1	4800	1.01	12.35	86.64	3.51	9.85	86.64
DLJ-1	4815	2.37	19.27	78.36	7.01	14.62	78.36
DLJ-1	4830	1.15	13.19	85.66	4.01	10.33	85.66
DLJ-1	4845	0.98	10.71	88.31	3.56	8.13	88.31
DLJ-1	4860	1.56	15.82	82.63	5.19	12.19	82.63
DLJ-1	4875	2.35	18.03	79.62	7.25	13.13	79.62
DLJ-1	4890	4.57	26.95	68.48	13.09	18.44	68.48
DLJ-1	4905	6.55	31.51	61.93	17.48	20.59	61.93
DLJ-1	4920	4.75	33.50	61.74	13.35	24.91	61.74
DLJ-1	4935	2.11	13.58	84.31	5.79	9.90	84.31
DLJ-1	4950	4.57	24.81	70.62	11.90	17.48	70.62
DLJ-1	4965	2.95	18.94	78.11	8.37	13.52	78.11
DLJ-1	4980	6.02	36.08	57.90	16.18	25.92	57.90
DLJ-1	4995	1.31	14.14	84.55	4.23	11.22	84.55
DLJ-1	5010	1.56	22.52	75.93	4.64	19.43	75.93

DLJ-1	5025	4.31	48.89	46.80	10.80	42.39	46.80
DLJ-1	5040	0.37	6.24	93.39	1.57	5.03	93.39
DLJ-1	5055	0.06	4.16	95.78	0.86	3.36	95.78
DLJ-1	5070	0.91	18.85	80.24	3.13	16.63	80.24
DLJ-1	5085	1.54	16.12	82.34	4.82	12.83	82.34
DLJ-1	5100	1.31	18.02	80.67	4.12	15.20	80.67
DLJ-1	5115	0.21	5.08	94.72	1.05	4.24	94.72
DLJ-1	5130	1.11	17.74	81.15	3.54	15.31	81.15
DLJ-1	5145	0.24	5.32	94.44	1.26	4.30	94.44
DLJ-1	5160	1.52	23.11	75.37	4.67	19.95	75.37
DLJ-1	5175	1.20	16.00	82.80	3.56	13.64	82.80
DLJ-1	5190	0.15	4.92	94.94	0.90	4.16	94.94
DLJ-1	5205	0.29	8.34	91.37	1.28	7.34	91.37
DLJ-1	5220	0.64	11.64	87.72	2.29	9.99	87.72
DLJ-1	5235	4.72	19.81	75.47	10.03	14.50	75.47
DLJ-1	5250	4.84	18.89	76.27	11.34	12.39	76.27
DLJ-1	5265	2.51	20.96	76.53	6.51	16.97	76.53
DLJ-1	5280	4.51	31.18	64.30	11.56	24.14	64.30
DLJ-1	5295	3.51	25.89	70.60	9.79	19.61	70.60
DLJ-1	5310	4.59	27.01	68.40	12.38	19.22	68.40
DLJ-1	5325	5.51	34.53	59.96	15.97	24.07	59.96
DLJ-1	5340	8.92	35.66	55.43	23.28	21.29	55.43
DLJ-1	5355	2.63	18.60	78.76	7.57	13.67	78.76
DLJ-1	5370	3.98	47.61	48.41	10.14	41.46	48.41
DLJ-1	5385	2.02	41.62	56.36	5.15	38.49	56.36
DLJ-1	5400	2.92	59.23	37.85	7.83	54.32	37.85
DLJ-1	5415	2.48	51.51	46.01	6.85	47.14	46.01
DLJ-1	5430	1.97	65.88	32.14	4.98	62.88	32.14
DLJ-1	5445	3.14	75.19	21.68	8.18	70.15	21.68
DLJ-1	5460	2.07	62.97	34.96	5.31	59.73	34.96
DLJ-1	5475	2.21	80.19	17.60	4.86	77.54	17.60
DLJ-1	5490	2.44	73.82	23.74	6.05	70.21	23.74
DLJ-1	5505	5.29	77.85	16.86	12.14	71.00	16.86
DLJ-1	5520	2.09	87.88	10.03	4.91	85.06	10.03
DLJ-1	5535	0.40	7.27	92.34	1.57	6.09	92.34
DLJ-1	5550	0.77	9.10	90.13	2.81	7.06	90.13
DLJ-1	5565	1.38	15.33	83.29	4.38	12.33	83.29
DLJ-1	5580	0.80	11.33	87.87	2.86	9.26	87.87
DLJ-1	5595	0.71	8.50	90.79	2.56	6.65	90.79
DLJ-1	5610	0.76	9.50	89.74	2.70	7.56	89.74
DLJ-1	5625	1.49	28.99	69.52	4.06	26.42	69.52
DLJ-1	5640	2.48	37.14	60.38	6.80	32.83	60.38
DLJ-1	5655	1.93	42.72	55.34	5.25	39.41	55.34
DLJ-1	5670	1.12	11.08	87.80	3.97	8.24	87.80
DLJ-1	5685	2.52	20.89	76.59	7.12	16.29	76.59
DLJ-1	5700	2.03	22.74	75.23	6.61	18.16	75.23
DLJ-1	5715	3.09	27.24	69.67	9.21	21.13	69.67

DLJ-1	5730	5.24	28.86	65.89	13.27	20.84	65.89
DLJ-1	5745	1.33	10.51	88.16	4.03	7.81	88.16
DLJ-1	5760	2.84	52.69	44.47	7.57	47.96	44.47
DLJ-1	5775	1.32	26.13	72.55	3.44	24.01	72.55
DLJ-1	5790	1.58	22.37	76.06	4.27	19.67	76.06
DLJ-1	5805	0.98	19.55	79.48	3.01	17.52	79.48
DLJ-1	5820	1.55	23.37	75.08	4.95	19.97	75.08
DLJ-1	5835	2.33	16.01	81.65	6.25	12.09	81.65
DLJ-1	5850	1.01	10.90	88.09	2.96	8.95	88.09
DLJ-1	5865	0.68	7.03	92.29	2.20	5.51	92.29
DLJ-1	5880	2.00	13.15	84.85	5.23	9.91	84.85
DLJ-1	5895	1.69	15.46	82.85	4.77	12.39	82.85
DLJ-1	5910	0.84	7.60	91.56	2.60	5.85	91.56
DLJ-1	5925	1.41	18.98	79.61	4.10	16.29	79.61
DLJ-1	5940	3.27	29.55	67.18	10.02	22.80	67.18
DLJ-1	5955	2.73	20.34	76.94	7.85	15.21	76.94
DLJ-1	5970	1.63	14.06	84.31	4.65	11.04	84.31
DLJ-1	5985	2.56	22.23	75.21	6.63	18.16	75.21
DLJ-1	6000	4.60	26.04	69.36	11.52	19.12	69.36
DLJ-1	6015	5.30	36.56	58.14	13.59	28.27	58.14
DLJ-1	6030	2.37	21.32	76.30	6.54	17.16	76.30
DLJ-1	6045	2.38	22.28	75.33	6.31	18.36	75.33
DLJ-1	6060	0.96	9.90	89.13	3.06	7.81	89.13
DLJ-1	6075	0.64	8.13	91.23	2.34	6.43	91.23
DLJ-1	6090	1.09	13.13	85.77	3.87	10.35	85.77
DLJ-1	6105	5.14	25.82	69.04	13.49	17.47	69.04
DLJ-1	6120	2.56	20.63	76.82	7.59	15.59	76.82
DLJ-1	6135	2.32	21.43	76.25	6.89	16.86	76.25
DLJ-1	6150	3.67	31.34	64.99	10.42	24.59	64.99
DLJ-1	6165	2.58	25.07	72.35	7.48	20.17	72.35
DLJ-1	6180	2.55	27.14	70.31	7.36	22.33	70.31
DLJ-1	6195	0.97	26.19	72.84	2.87	24.29	72.84
DLJ-1	6210	1.02	23.30	75.68	3.28	21.04	75.68
DLJ-1	6225	3.30	29.29	67.41	9.82	22.77	67.41
DLJ-1	6240	2.85	14.68	82.47	8.53	8.99	82.47
DLJ-1	6255	2.52	15.15	82.34	7.11	10.55	82.34
DLJ-1	6270	1.61	15.27	83.11	4.86	12.03	83.11
DLJ-1	6285	2.75	20.39	76.86	8.01	15.13	76.86
DLJ-1	6300	5.01	40.49	54.50	14.81	30.69	54.50
DLJ-1	6315	2.45	15.28	82.26	7.39	10.34	82.26
DLJ-1	6330	1.65	12.17	86.19	5.26	8.55	86.19
DLJ-1	6345	1.38	11.73	86.88	4.62	8.50	86.88
DLJ-1	6360	1.22	10.62	88.16	4.11	7.73	88.16
DLJ-1	6375	1.88	14.58	83.54	5.95	10.51	83.54
DLJ-1	6390	1.13	11.02	87.85	3.85	8.30	87.85
DLJ-1	6405	0.64	7.08	92.28	2.33	5.39	92.28
DLJ-1	6420	2.09	19.68	78.23	6.07	15.70	78.23

DLJ-1	6435	1.92	18.38	79.70	5.42	14.88	79.70
DLJ-1	6450	0.29	4.16	95.55	1.26	3.19	95.55
DLJ-1	6465	1.04	15.88	83.07	3.15	13.77	83.07
DLJ-1	6480	1.22	24.29	74.49	3.33	22.18	74.49
DLJ-1	6495	1.42	31.82	66.76	4.03	29.21	66.76
DLJ-1	6510	1.09	32.46	66.45	3.12	30.42	66.45
DLJ-1	6525	0.53	21.36	78.11	1.59	20.29	78.11
DLJ-1	6540	1.65	27.02	71.33	4.56	24.11	71.33
DLJ-1	6555	1.60	36.68	61.72	4.03	34.25	61.72
DLJ-1	6570	2.21	26.20	71.58	6.03	22.39	71.58
DLJ-1	6585	1.31	17.86	80.83	4.07	15.10	80.83
DLJ-1	6600	6.63	25.61	67.75	16.21	16.03	67.75
DLJ-1	6615	5.17	18.56	76.26	11.99	11.75	76.26
DLJ-1	6630	4.85	17.63	77.53	11.39	11.08	77.53
DLJ-1	6645	4.31	13.98	81.71	9.67	8.62	81.71
DLJ-1	6660	9.79	29.28	60.93	21.43	17.64	60.93
DLJ-1	6675	4.58	17.08	78.33	11.10	10.57	78.33
DLJ-1	6690	5.72	20.86	73.42	13.60	12.98	73.42
DLJ-1	6705	4.68	16.91	78.41	11.26	10.33	78.41
DLJ-1	6720	6.51	28.27	65.21	16.15	18.63	65.21
DLJ-1	6735	8.48	34.54	56.98	20.71	22.31	56.98
DLJ-1	6750	6.89	27.99	65.12	16.74	18.14	65.12
DLJ-1	6765	7.62	29.86	62.52	18.36	19.12	62.52
DLJ-1	6780	6.15	24.97	68.88	14.99	16.13	68.88
DLJ-1	6795	7.69	31.36	60.95	18.66	20.39	60.95
DLJ-1	6810	14.01	56.52	29.48	33.82	36.71	29.48
DLJ-1	6825	9.10	35.07	55.83	21.66	22.52	55.83
DLJ-1	6840	4.86	19.49	75.65	11.93	12.43	75.65
DLJ-1	6855	7.31	30.24	62.44	17.56	20.00	62.44
DLJ-1	6870	7.29	31.36	61.35	17.92	20.73	61.35
DLJ-1	6885	5.76	23.37	70.87	14.01	15.12	70.87
DLJ-1	6900	10.67	40.50	48.82	25.14	26.04	48.82
DLJ-1	6915	13.29	48.24	38.46	30.84	30.70	38.46
DLJ-1	6930	9.00	38.16	52.84	21.97	25.20	52.84
DLJ-1	6945	7.38	25.45	67.17	16.86	15.98	67.17
DLJ-1	6960	4.64	20.46	74.89	11.70	13.41	74.89
DLJ-1	6975	4.77	21.24	73.99	12.20	13.80	73.99
DLJ-1	6990	4.02	17.51	78.47	10.09	11.44	78.47
DLJ-1	7005	4.87	15.85	79.27	11.14	9.58	79.27
DLJ-1	7020	2.99	10.48	86.53	7.10	6.37	86.53
DLJ-1	7035	8.95	30.73	60.32	20.80	18.88	60.32
DLJ-1	7050	11.30	36.76	51.94	25.68	22.39	51.94
DLJ-1	7065	1.01	8.49	90.51	2.97	6.53	90.51
DLJ-1	7080	1.35	11.24	87.41	3.65	8.94	87.41
DLJ-1	7095	0.69	16.08	83.23	2.25	14.52	83.23
DLJ-1	7110	3.87	20.97	75.16	9.28	15.56	75.16
DLJ-1	7125	2.22	19.07	78.72	5.76	15.53	78.72

DLJ-1	7140	3.53	23.48	72.99	9.03	17.98	72.99
DLJ-1	7155	1.93	11.68	86.39	5.19	8.42	86.39
DLJ-1	7170	6.16	33.33	60.51	15.39	24.11	60.51
DLJ-1	7200	5.16	27.94	66.90	13.34	19.76	66.90
DLJ-1	7215	4.18	19.59	76.23	10.70	13.07	76.23
DLJ-1	7230	6.26	31.15	62.59	15.78	21.63	62.59
DLJ-1	7245	7.70	37.20	55.10	19.69	25.20	55.10
DLJ-1	7260	5.78	21.93	72.28	14.06	13.65	72.28
DLJ-1	7275	4.17	11.43	84.41	9.79	5.80	84.41
DLJ-1	7290	2.36	9.42	88.22	6.10	5.68	88.22
DLJ-1	7305	1.44	6.14	92.42	4.26	3.32	92.42
DLJ-1	7320	0.66	3.70	95.64	2.05	2.32	95.64
DLJ-1	7335	5.21	19.94	74.85	14.11	11.04	74.85
DLJ-1	7350	1.08	5.19	93.73	3.21	3.06	93.73
DLJ-1	7365	3.78	14.35	81.87	10.21	7.93	81.87
DLJ-1	7380	3.81	15.04	81.15	9.55	9.30	81.15
DLJ-1	7395	6.94	31.44	61.61	17.90	20.49	61.61
DLJ-1	7410	4.94	34.83	60.23	14.72	25.05	60.23
DLJ-1	7425	7.46	39.93	52.61	20.94	26.45	52.61
DLJ-1	7440	5.98	25.54	68.48	15.68	15.84	68.48
DLJ-1	7455	8.83	39.18	52.00	22.40	25.60	52.00
DLJ-1	7470	9.93	36.58	53.49	24.60	21.91	53.49
DLJ-1	7485	4.53	27.79	67.67	11.99	20.34	67.67
DLJ-1	7500	2.84	20.98	76.19	8.13	15.69	76.19
DLJ-1	7515	2.30	21.61	76.10	6.79	17.11	76.10
DLJ-1	7530	2.61	22.69	74.70	7.46	17.84	74.70
DLJ-1	7545	1.82	15.62	82.56	4.99	12.45	82.56
DLJ-1	7560	1.45	15.40	83.14	4.37	12.49	83.14
DLJ-1	7575	0.91	13.45	85.64	2.79	11.57	85.64
DLJ-1	7590	2.12	27.95	69.93	5.95	24.12	69.93
DLJ-1	7605	1.27	18.16	80.57	3.96	15.46	80.57
DLJ-1	7620	2.21	21.74	76.05	6.47	17.48	76.05
DLJ-1	7635	1.42	16.36	82.22	4.34	13.44	82.22
DLJ-1	7650	1.93	21.27	76.80	5.61	17.59	76.80
DLJ-2	165	1.07	22.50	76.44	5.14	18.42	76.44
DLJ-2	315	7.05	40.23	52.72	19.60	27.68	52.72
DLJ-2	465	10.14	45.43	44.42	25.24	30.34	44.42
DLJ-2	615	7.72	39.41	52.87	18.35	28.78	52.87
DLJ-2	765	3.20	15.88	80.92	8.74	10.34	80.92
DLJ-2	915	7.15	49.30	43.55	18.34	38.11	43.55
DLJ-2	1065	10.45	47.01	42.54	24.03	33.43	42.54
DLJ-2	1215	7.08	50.35	42.57	16.65	40.78	42.57
DLJ-2	1350	3.39	28.42	68.20	8.48	23.33	68.20
DLJ-2	1365	7.62	40.93	51.45	18.48	30.07	51.45
DLJ-2	1515	5.97	29.16	64.87	14.24	20.89	64.87
DLJ-2	1605	4.50	23.12	72.38	10.89	16.73	72.38
DLJ-2	1725	8.24	44.43	47.33	19.56	33.11	47.33

DLJ-2	1845	5.14	26.45	68.41	12.28	19.31	68.41
DLJ-2	1950	5.02	29.45	65.53	12.43	22.04	65.53
DLJ-2	2040	2.27	17.72	80.01	6.13	13.86	80.01
DLJ-2	2145	4.98	30.52	64.50	12.33	23.17	64.50
DLJ-2	2235	7.75	40.63	51.62	18.72	29.66	51.62
DLJ-2	2325	4.57	26.79	68.64	11.22	20.14	68.64
DLJ-2	2400	7.09	32.57	60.34	16.59	23.07	60.34
DLJ-2	2505	8.20	36.57	55.23	18.82	25.96	55.23
DLJ-2	2595	6.67	32.44	60.89	15.79	23.32	60.89
DLJ-2	2700	7.91	34.55	57.53	18.44	24.03	57.53
DLJ-2	2775	5.15	23.78	71.07	12.32	16.62	71.07
DLJ-2	2865	5.61	31.50	62.89	13.86	23.24	62.89
DLJ-2	2955	7.60	39.62	52.78	18.06	29.16	52.78
DLJ-2	3045	8.15	41.24	50.61	19.69	29.71	50.61
DLJ-2	3150	7.19	40.00	52.81	17.84	29.36	52.81
DLJ-2	3180	5.46	57.05	37.49	15.13	47.38	37.49
DLJ-2	3195	5.63	64.14	30.23	15.03	54.74	30.23
DLJ-2	3210	6.43	64.77	28.80	16.49	54.71	28.80
DLJ-2	3225	7.57	59.60	32.83	18.80	48.38	32.83
DLJ-2	3240	7.43	70.84	21.73	19.30	58.97	21.73
DLJ-2	3270	15.56	80.24	4.20	49.11	46.69	4.20
DLJ-2	3285	5.72	43.51	50.77	14.99	34.24	50.77
DLJ-2	3300	6.70	52.40	40.90	17.26	41.84	40.90
DLJ-2	3315	1.83	24.28	73.89	4.91	21.20	73.89
DLJ-2	3330	4.98	33.85	61.17	12.32	26.50	61.17
DLJ-2	3345	6.65	68.29	25.06	18.38	56.56	25.06
DLJ-2	3360	6.84	55.53	37.64	17.04	45.33	37.64
DLJ-2	3375	9.29	72.46	18.25	24.69	57.06	18.25
DLJ-2	3390	6.16	68.61	25.24	16.93	57.83	25.24
DLJ-2	3405	4.87	47.60	47.53	12.50	39.98	47.53
DLJ-2	3420	3.32	31.91	64.78	8.97	26.26	64.78
DLJ-2	3435	6.10	59.41	34.49	15.88	49.63	34.49
DLJ-2	3450	16.99	72.39	10.62	36.15	53.23	10.62
DLJ-2	3465	12.62	78.81	8.56	34.22	57.22	8.56
DLJ-2	3480	10.01	63.21	26.77	26.72	46.51	26.77
DLJ-2	3495	12.76	75.68	11.56	34.54	53.90	11.56
DLJ-2	3510	14.31	77.10	8.59	37.82	53.59	8.59
DLJ-2	3525	7.93	61.81	30.26	20.79	48.95	30.26
DLJ-2	3540	12.92	74.92	12.16	34.99	52.86	12.16
DLJ-2	3555	17.59	78.92	3.49	46.84	49.67	3.49
DLJ-2	3570	20.75	77.26	1.99	51.95	46.06	1.99
DLJ-2	3585	11.77	85.94	2.29	35.40	62.31	2.29
DLJ-2	3600	13.80	82.55	3.65	37.92	58.43	3.65
DLJ-2	3615	16.63	81.34	2.03	43.48	54.49	2.03
DLJ-2	3630	17.01	82.53	0.47	46.15	53.38	0.47
DLJ-2	3645	19.31	80.15	0.54	50.58	48.87	0.54
DLJ-2	3660	18.76	70.10	11.14	46.90	41.96	11.14

DLJ-2	3675	15.69	80.86	3.44	43.39	53.17	3.44
DLJ-2	3690	18.10	80.32	1.57	48.72	49.71	1.57
DLJ-2	3705	17.58	81.73	0.69	47.74	51.57	0.69
DLJ-2	3720	16.44	76.68	6.88	44.66	48.45	6.88
DLJ-2	3735	10.62	63.59	25.79	28.48	45.73	25.79
DLJ-2	3750	15.94	74.59	9.47	40.65	49.88	9.47
DLJ-2	3765	5.34	46.49	48.17	16.63	35.20	48.17
DLJ-2	3780	2.67	22.93	74.41	8.41	17.19	74.41
DLJ-2	3795	7.96	59.20	32.84	23.78	43.39	32.84
DLJ-2	3810	13.39	69.60	17.01	40.28	42.71	17.01
DLJ-2	3825	8.95	51.08	39.97	25.98	34.04	39.97
DLJ-2	3840	3.80	29.66	66.54	11.64	21.82	66.54
DLJ-2	3855	6.50	38.93	54.57	16.29	29.14	54.57
DLJ-2	3870	2.21	14.70	83.09	6.64	10.27	83.09
DLJ-2	3915	2.93	21.62	75.45	9.11	15.44	75.45
DLJ-2	3930	3.03	18.00	78.97	9.14	11.89	78.97
DLJ-2	3945	8.85	60.14	31.01	24.58	44.41	31.01
DLJ-2	3960	1.59	10.59	87.82	5.31	6.87	87.82
DLJ-2	3975	3.12	19.27	77.61	9.28	13.12	77.61
DLJ-2	3990	1.80	15.65	82.55	5.37	12.08	82.55
DLJ-2	4005	16.75	63.75	19.50	38.89	41.61	19.50
DLJ-2	4020	5.29	74.52	20.19	13.68	66.13	20.19
DLJ-2	4035	0.50	9.25	90.25	1.99	7.76	90.25
DLJ-2	4050	1.26	16.96	81.77	3.95	14.28	81.77
DLJ-2	4065	3.16	40.71	56.12	9.03	34.85	56.12
DLJ-2	4080	0.76	8.37	90.87	3.17	5.96	90.87
DLJ-2	4095	1.39	13.15	85.45	4.60	9.95	85.45
DLJ-2	4110	4.13	27.21	68.67	11.88	19.45	68.67
DLJ-2	4125	0.57	8.32	91.11	2.47	6.42	91.11
DLJ-2	4140	3.72	38.61	57.67	10.67	31.65	57.67
DLJ-2	4155	2.35	28.26	69.39	6.21	24.40	69.39
DLJ-2	4170	3.10	32.44	64.47	8.62	26.92	64.47
DLJ-2	4185	1.40	14.53	84.07	4.28	11.65	84.07
DLJ-2	4200	1.33	16.46	82.21	3.91	13.88	82.21
DLJ-2	4215	16.54	71.74	11.72	41.18	47.10	11.72
DLJ-2	4230	4.86	63.45	31.69	12.83	55.48	31.69
DLJ-2	4245	2.65	39.86	57.49	7.40	35.11	57.49
DLJ-2	4260	3.62	67.07	29.32	9.78	60.90	29.32
DLJ-2	4275	4.17	67.33	28.51	11.99	59.50	28.51
DLJ-2	4290	0.46	9.94	89.59	2.05	8.36	89.59
DLJ-2	4305	1.94	18.85	79.22	5.97	14.81	79.22
DLJ-2	4320	0.99	14.04	84.97	3.49	11.54	84.97
DLJ-2	4335	2.63	46.97	50.40	7.75	41.84	50.40
DLJ-2	4350	4.90	75.81	19.29	13.08	67.63	19.29
DLJ-2	4365	5.70	65.02	29.28	13.92	56.80	29.28
DLJ-2	4380	3.19	61.99	34.81	7.91	57.28	34.81
DLJ-2	4395	4.80	75.01	20.18	12.10	67.72	20.18

DLJ-2	4410	8.55	55.89	35.56	21.68	42.76	35.56
DLJ-2	4425	1.38	26.64	71.98	3.53	24.49	71.98
DLJ-2	4440	4.72	80.35	14.93	12.33	72.74	14.93
DLJ-2	4455	4.73	66.04	29.23	12.08	58.69	29.23
DLJ-2	4470	0.82	21.19	77.99	2.37	19.64	77.99
DLJ-2	4485	3.98	71.56	24.46	10.07	65.47	24.46
DLJ-2	4500	2.22	36.73	61.06	6.16	32.78	61.06
DLJ-2	4515	2.96	45.41	51.63	7.96	40.41	51.63
DLJ-2	4530	4.57	73.13	22.30	12.07	65.63	22.30
DLJ-2	4545	8.99	80.70	10.31	24.40	65.29	10.31
DLJ-2	4560	4.09	63.35	32.56	11.13	56.32	32.56
DLJ-2	4575	4.86	77.93	17.21	12.96	69.83	17.21
DLJ-2	4590	7.79	46.59	45.62	18.58	35.80	45.62
DLJ-2	4605	4.25	61.38	34.37	11.50	54.13	34.37
DLJ-2	4620	4.16	58.54	37.30	11.11	51.59	37.30
DLJ-2	4635	3.37	58.78	37.85	9.02	53.13	37.85
DLJ-2	4650	3.56	61.04	35.39	9.24	55.37	35.39
DLJ-2	4665	4.76	77.35	17.89	12.31	69.80	17.89
DLJ-2	4680	4.69	77.06	18.26	12.51	69.24	18.26
DLJ-2	4695	3.95	69.17	26.88	10.28	62.84	26.88
DLJ-2	4710	6.44	82.08	11.48	17.04	71.48	11.48
DLJ-2	4725	16.81	79.08	4.12	41.90	53.99	4.12
DLJ-2	4740	12.79	80.37	6.83	32.65	60.52	6.83
DLJ-2	4755	10.49	82.13	7.39	27.52	65.09	7.39
DLJ-2	4770	15.82	81.93	2.25	41.83	55.93	2.25
DLJ-2	4785	13.47	81.17	5.37	35.35	59.28	5.37
DLJ-2	4800	16.15	80.08	3.77	41.13	55.10	3.77
DLJ-2	4815	17.21	80.36	2.43	44.12	53.46	2.43
DLJ-2	4830	12.24	81.97	5.79	31.57	62.64	5.79
DLJ-2	4845	9.12	85.80	5.08	23.10	71.83	5.08
DLJ-2	4860	10.95	84.67	4.38	28.77	66.86	4.38
DLJ-2	4875	17.53	80.65	1.83	41.42	56.75	1.83
DLJ-2	4890	11.10	87.49	1.42	31.75	66.83	1.42
DLJ-2	4905	25.28	74.28	0.44	59.33	40.23	0.44
DLJ-2	4920	10.16	86.11	3.73	26.67	69.60	3.73
DLJ-2	4935	2.69	14.18	83.13	6.90	9.97	83.13
DLJ-2	5025	0.54	4.37	95.09	2.00	2.91	95.09
DLJ-2	5115	0.74	3.62	95.64	2.33	2.02	95.64
DLJ-2	5205	0.01	1.01	98.98	0.24	0.78	98.98
DLJ-2	5295	0.93	8.48	90.58	3.17	6.25	90.58
DLJ-2	5385	0.68	8.60	90.71	2.50	6.78	90.71
DLJ-2	5475	0.71	11.32	87.97	2.61	9.42	87.97
DLJ-2	5550	0.42	4.72	94.86	1.62	3.52	94.86
OCG	10	9.27	81.97	8.76	31.42	59.82	8.76
OCG	20	10.80	87.02	2.17	33.87	63.96	2.17
OCG	30	10.93	86.79	2.28	33.84	63.88	2.28
OCG	40	10.86	86.88	2.26	33.71	64.03	2.26

OCG	50	10.97	87.03	2.00	34.45	63.55	2.00
OCG	60	10.98	87.40	1.62	35.32	63.06	1.62
OCG	70	10.61	87.13	2.26	33.89	63.85	2.26
OCG	80	9.46	84.81	5.73	28.55	65.71	5.73
OCG	90	9.99	84.98	5.02	29.02	65.96	5.02
OCG	100	9.26	84.82	5.92	26.53	67.55	5.92
OCG	110	13.46	84.83	1.70	43.72	54.58	1.70
OCG	120	10.15	85.53	4.32	30.52	65.16	4.32
OCG	130	8.93	86.51	4.56	25.84	69.61	4.56
OCG	140	10.89	87.11	2.00	33.64	64.36	2.00
OCG	150	10.36	86.86	2.78	33.01	64.21	2.78
OCG	160	8.26	82.88	8.86	24.69	66.45	8.86
OCG	170	8.00	87.24	4.76	24.36	70.88	4.76
OCG	180	8.90	87.71	3.38	26.98	69.64	3.38
OCG	190	11.57	86.55	1.88	38.40	59.72	1.88
OCG	200	9.26	86.85	3.89	28.73	67.38	3.89
OCG	210	7.69	80.18	12.12	21.15	66.73	12.12
OCG	220	8.75	86.13	5.12	24.60	70.28	5.12
OCG	230	8.48	86.40	5.11	24.59	70.30	5.11
OCG	240	8.43	87.56	4.01	25.63	70.36	4.01
OCG	250	8.25	86.48	5.27	24.15	70.58	5.27
OCG	260	8.80	88.00	3.20	26.66	70.13	3.20
OCG	270	7.90	87.87	4.23	23.07	72.69	4.23
OCG	280	8.61	86.96	4.44	25.90	69.66	4.44
OCG	290	7.73	86.53	5.74	21.96	72.30	5.74
OCG	300	7.57	86.40	6.03	23.00	70.96	6.03
OCG	310	8.65	85.79	5.55	25.57	68.88	5.55
OCG	320	9.00	85.81	5.18	25.30	69.51	5.18
OCG	330	6.67	78.97	14.36	17.68	67.96	14.36
OCG	340	7.60	84.60	7.80	21.51	70.70	7.80
OCG	350	8.00	82.69	9.31	22.56	68.13	9.31
OCG	360	7.48	84.47	8.04	21.15	70.81	8.04
OCG	370	7.82	77.17	15.01	21.42	63.57	15.01
OCG	380	7.29	83.25	9.46	20.15	70.39	9.46
OCG	390	8.15	88.51	3.34	24.37	72.28	3.34
OCG	400	7.05	87.04	5.92	19.54	74.54	5.92
OCG	410	7.18	85.76	7.06	20.12	72.82	7.06
OCG	420	8.27	85.82	5.91	24.50	69.58	5.91
OCG	430	8.80	86.09	5.11	26.21	68.69	5.11
OCG	440	9.67	82.74	7.59	28.15	64.25	7.59
OCG	450	9.23	85.93	4.85	26.89	68.26	4.85
OCG	460	7.38	85.52	7.10	23.11	69.79	7.10
OCG	470	7.10	85.75	7.15	20.72	72.13	7.15
OCG	480	7.41	84.93	7.67	21.58	70.75	7.67
OCG	490	7.86	87.96	4.18	25.83	69.99	4.18
OCG	500	6.91	85.68	7.41	23.30	69.29	7.41
OCG	510	6.81	87.64	5.54	23.00	71.45	5.54

OCG	520	6.68	87.44	5.88	20.69	73.43	5.88
OCG	530	7.25	87.04	5.70	22.48	71.81	5.70
OCG	540	7.70	86.52	5.78	24.21	70.01	5.78
OCG	550	6.76	87.24	6.01	20.18	73.82	6.01
OCG	560	8.37	85.13	6.50	26.81	66.69	6.50
OCG	570	7.83	88.71	3.46	26.10	70.43	3.46
OCG	580	6.87	84.60	8.53	21.24	70.23	8.53
OCG	590	5.92	84.04	10.04	20.50	69.46	10.04
OCG	600	7.35	87.74	4.91	25.07	70.02	4.91
OCG	610	6.04	85.99	7.97	20.75	71.28	7.97
OCG	620	6.58	86.92	6.50	19.48	74.02	6.50
OCG	630	7.19	88.96	3.85	26.91	69.24	3.85
OCG	640	5.89	84.66	9.45	20.39	70.16	9.45
OCG	650	5.90	85.25	8.85	18.93	72.22	8.85
OCG	660	8.11	86.42	5.47	28.75	65.79	5.47
OCG	670	6.78	87.07	6.15	22.14	71.71	6.15
OCG	680	6.88	77.81	15.31	22.55	62.13	15.31
OCG	690	6.21	76.99	16.80	20.07	63.13	16.80
OCG	700	5.12	84.78	10.10	13.87	76.03	10.10
OCG	710	7.73	85.50	6.77	24.72	68.52	6.77
OCG	720	6.22	85.51	8.28	19.66	72.06	8.28
OCG	730	5.41	85.22	9.37	14.99	75.64	9.37
OCG	740	4.97	78.20	16.83	13.38	69.79	16.83
OCG	750	6.76	81.18	12.05	18.71	69.23	12.05
OCG	800	6.16	83.44	10.41	17.49	72.10	10.41
OCG	810	5.88	83.71	10.41	17.35	72.24	10.41
OCG	820	6.02	82.11	11.86	16.91	71.22	11.86
SLS	150	9.48	87.35	3.18	39.25	57.57	3.18
SLS	160	11.01	86.68	2.31	44.19	53.50	2.31
SLS	170	13.64	85.58	0.78	51.34	47.88	0.78
SLS	180	7.77	87.33	4.90	33.37	61.73	4.90
SLS	190	12.23	84.79	2.98	43.62	53.40	2.98
SLS	200	13.58	82.94	3.48	45.39	51.12	3.48
SLS	210	9.16	83.48	7.36	29.63	63.01	7.36
SLS	220	10.48	85.37	4.15	35.96	59.90	4.15
SLS	230	10.47	84.24	5.29	36.23	58.49	5.29
SLS	240	9.21	82.30	8.49	33.65	57.85	8.49
SLS	250	8.81	86.60	4.59	29.13	66.29	4.59
SLS	260	8.88	88.22	2.90	30.21	66.89	2.90
SLS	270	8.37	88.75	2.88	29.70	67.41	2.88
SLS	280	7.20	90.75	2.04	23.83	74.13	2.04
SLS	290	5.91	85.06	9.03	20.37	70.60	9.03
SLS	300	6.14	88.88	4.98	20.36	74.67	4.98
SLS	310	8.81	86.57	4.62	29.64	65.75	4.62
SLS	320	6.55	85.67	7.78	22.05	70.17	7.78
SLS	330	6.99	88.47	4.54	23.02	72.43	4.54
SLS	340	7.14	88.57	4.28	23.44	72.28	4.28

SLS	350	6.69	88.48	4.83	21.81	73.36	4.83
SLS	360	6.26	87.58	6.17	19.84	73.99	6.17
SLS	370	6.18	87.36	6.45	19.40	74.14	6.45
SLS	380	5.45	80.03	14.52	17.84	67.64	14.52
SLS	390	5.65	82.64	11.71	17.64	70.65	11.71
SLS	400	6.12	87.42	6.46	18.41	75.13	6.46
SLS	410	7.61	89.99	2.39	26.11	71.50	2.39
SLS	420	7.57	89.79	2.65	26.72	70.63	2.65
SLS	430	8.39	81.10	10.51	32.68	56.81	10.51
SLS	440	6.03	80.41	13.56	25.01	61.43	13.56
SLS	450	5.46	83.57	10.97	20.72	68.30	10.97
SLS	460	10.16	85.17	4.67	33.83	61.50	4.67
SLS	470	7.68	86.59	5.73	26.20	68.07	5.73
SLS	480	7.16	86.11	6.73	24.30	68.96	6.73
SLS	490	6.11	87.18	6.72	19.80	73.48	6.72
SLS	500	6.20	87.82	5.98	19.53	74.49	5.98
SLS	510	6.28	87.86	5.86	20.27	73.87	5.86
SLS	520	8.32	89.08	2.61	29.67	67.72	2.61
SLS	530	8.08	81.56	10.37	31.75	57.88	10.37
SLS	540	5.69	84.43	9.88	21.63	68.49	9.88
SLS	550	7.48	86.81	5.71	23.43	70.85	5.71
SLS	560	7.90	85.03	7.07	23.37	69.56	7.07
SLS	570	9.12	87.39	3.48	26.97	69.55	3.48
SLS	580	7.99	87.38	4.62	23.73	71.65	4.62
SLS	590	8.93	87.20	3.88	26.26	69.86	3.88
SLS	600	6.68	68.95	24.37	20.30	55.33	24.37
SLS	610	5.90	86.77	7.33	18.10	74.58	7.33
SLS	620	6.12	89.25	4.63	19.39	75.99	4.63
SLS	630	7.97	82.46	9.57	32.14	58.29	9.57
SLS	640	6.61	84.87	8.52	23.08	68.41	8.52
SLS	650	7.76	87.55	4.69	23.59	71.71	4.69
SLS	660	8.29	87.83	3.87	24.21	71.92	3.87
SLS	670	8.42	82.56	9.02	25.07	65.91	9.02
SLS	680	5.64	56.87	37.49	17.74	44.77	37.49
SLS	690	1.13	13.82	85.05	3.97	10.98	85.05
SLS	700	0.63	10.55	88.82	2.68	8.50	88.82
SLS	710	0.63	9.96	89.41	2.40	8.19	89.41
SLS	720	1.86	16.43	81.71	5.57	12.72	81.71
SLS	730	1.45	19.62	78.93	4.69	16.38	78.93
SLS	740	1.27	10.52	88.21	4.28	7.51	88.21
SLS	750	1.10	13.75	85.16	3.98	10.86	85.16
SLS	760	0.69	9.03	90.28	2.81	6.90	90.28
SLS	770	1.11	10.00	88.89	3.94	7.17	88.89
SLS	780	0.99	12.57	86.44	3.63	9.94	86.44
SLS	790	0.52	7.53	91.96	2.50	5.54	91.96
SLS	800	0.34	6.47	93.19	1.88	4.92	93.19
SLS	810	0.63	8.85	90.52	2.44	7.04	90.52

SLS	820	0.56	8.66	90.78	2.49	6.73	90.78
SLS	830	1.30	15.48	83.22	4.23	12.55	83.22
SLS	840	0.63	9.29	90.08	2.64	7.29	90.08
SLS	850	0.49	9.79	89.72	2.19	8.09	89.72
SLS	860	1.02	12.42	86.56	3.73	9.71	86.56
SLS	870	0.51	8.28	91.21	2.17	6.62	91.21
SLS	880	0.11	2.63	97.26	0.77	1.96	97.26
SLS	890	1.08	11.38	87.53	3.79	8.68	87.53
SLS	900	3.81	67.44	28.75	10.65	60.60	28.75
SLS	910	1.07	13.13	85.80	3.32	10.88	85.80
SLS	920	1.31	8.94	89.75	3.48	6.77	89.75
SLS	930	0.84	6.68	92.48	2.57	4.94	92.48
SLS	940	0.80	9.61	89.59	2.53	7.88	89.59
SLS	950	0.84	9.68	89.48	2.83	7.70	89.48
SLS	960	0.48	5.66	93.86	1.72	4.42	93.86
SLS	970	0.77	6.61	92.62	2.46	4.91	92.62
SLS	980	0.52	8.32	91.15	2.10	6.74	91.15
SLS	990	0.74	9.58	89.68	2.98	7.34	89.68
SLS	1000	0.57	8.19	91.24	2.47	6.29	91.24
SLS	1010	1.05	13.06	85.89	3.73	10.38	85.89
SLS	1020	0.11	2.38	97.51	0.89	1.60	97.51
SLS	1030	0.88	9.35	89.76	2.92	7.32	89.76
SLS	1040	1.28	15.72	82.99	4.19	12.81	82.99
SLS	1050	1.81	18.64	79.55	5.49	14.96	79.55
SLS	1060	0.41	4.08	95.50	1.56	2.94	95.50
SLS	1070	0.64	10.45	88.91	2.32	8.77	88.91
SLS	1080	0.67	8.22	91.10	2.39	6.51	91.10
SLS	1090	0.76	8.06	91.18	2.39	6.43	91.18
SLS	1100	0.96	14.14	84.90	2.56	12.54	84.90
SLS	1110	1.02	13.16	85.82	3.04	11.14	85.82
SLS	1120	1.20	16.44	82.37	3.07	14.56	82.37
SLS	1130	0.77	9.42	89.82	2.45	7.73	89.82
SLS	1140	1.15	10.32	88.53	3.55	7.92	88.53
SLS	1150	1.22	13.63	85.15	3.53	11.31	85.15
SLS	1160	1.15	8.91	89.94	3.55	6.51	89.94
SLS	1170	3.75	76.27	19.98	8.75	71.27	19.98
SLS	1180	4.17	72.59	23.25	10.84	65.91	23.25
SLS	1190	4.96	81.73	13.31	12.46	74.24	13.31
SLS	1200	5.43	82.24	12.33	14.36	73.31	12.33