

Supplementary Appendix for Rafaela M. Dancygier. 2014. “Electoral Rules or Electoral Leverage: Explaining Muslim Representation in England.” *World Politics* 66 (2).

Table A1: Sources used in Statistical Analyses

Table A2: Local Authorities Used in Sample

Table A3: Summary Statistics

Table A4: The Election of Muslim Councilors in English Municipalities – Additional Variables

Table A5: The Election of Muslim Councilors - Difference-in-Difference Regressions – Additional Variables

Table A6: The Selection of Muslim Candidates by Local Parties, by Electoral Rule – Including Results Outside of London

Table A7: The Selection of Muslim Candidates by Local Parties, by Electoral Rule – Previous Vote Margin above Median

Figure A1: Conditional Effects of Parties’ Previous Vote Margin Above Median on the Selection of Muslim Candidates, by Electoral Rule

Table A1: Sources used in Statistical Analyses

Sources

Election Variables Rallings, Colin, Michale Thrasher, and L. Ware. 2006. "SN: 5319: British Local Election Database, 1889-2003 [computer file]." Colchester, Essex: UK Data Archive [distributor].
Local Government Chronicles Elections Centre (personal communication)
Local Elections Archives Project, available at
<http://www.andrewteale.me.uk/leap/>
London DataStore, available at
<http://data.london.gov.uk/datastore/package/borough-council-election-results-2010>

All other variables

UK Office of National Statistics available at www.nomisweb.co.uk

Explanatory Notes

Segregation The formula to calculate the isolation index is as follows: $I = \sum_i (M_i/M)(M_i/T_i)$, where (M_i/M) measures the number of Muslims in a ward as a share of the city's Muslims and (M_i/T_i) measures the number of Muslims as a share of the total population in a ward.

Fractionalization The formula to calculate the fractionalization index is as follows: *Fractionalization* = $1 - \sum_{i=1}^n s_i^2$ where s_i is the share originating from each region i ($i = 1, \dots, n$).
The regions of birth include: Ireland, the Channel Islands, other Western Europe, Eastern Europe, North Africa, Nigeria, other Central and Western Africa, Kenya, South Africa, Zimbabwe, other South and Eastern Africa, Middle East, China, other Far East, Bangladesh, India, Pakistan, other South Asia, Canada, Jamaica, other Caribbean and West Indies, USA, other North America, South America, Oceania, and other.

Table A2: Local Authorities Used in Sample

London

Barking and Dagenham
Barnet
Bexley
Brent
Bromley
Camden
Croydon
Ealing
Enfield
Greenwich
Hackney
Hammersmith and Fulham
Haringey
Harrow
Havering
Hillingdon
Hounslow
Islington
Kensington and Chelsea
Kingston-upon-Thames
Lambeth
Lewisham
Merton
Newham
Redbridge
Richmond-upon-Thames
Southwark
Sutton
Tower Hamlets
Waltham Forest
Wandsworth
Westminster, City of

North East

Gateshead
Newcastle-upon-Tyne
North Tyneside
South Tyneside
Sunderland

North West

Bolton
Bury
Knowsley
Liverpool
Manchester
Oldham
Rochdale
Salford
Sefton
St. Helens
Stockport
Tameside
Trafford
Wigan
Wirral

West Midlands

Birmingham
Coventry
Dudley
Sandwell
Solihull
Walsall
Wolverhampton

Yorkshire and The Humber

Barnsley
Bradford
Calderdale
Doncaster
Kirklees
Leeds
Rotherham
Sheffield
Wakefield

Table A3: Summary Statistics**Local Authority Level Regressions**

| | All | | | | |
|-----------------------------|------------|-------|-------|------|-------|
| | N | Mean | SD | Min | Max |
| % Councilors who are Muslim | 309 | 4.61 | 6.00 | 0 | 28.13 |
| SMD | 309 | 0.58 | 0.49 | 0 | 1 |
| % Muslim Population | 309 | 4.92 | 4.68 | 0.17 | 24.31 |
| Segregation | 309 | 0.11 | 0.11 | 0.00 | 0.46 |
| Fractionalization | 309 | 0.72 | 0.14 | 0.30 | 0.90 |
| % Labour Vote | 309 | 35.38 | 10.29 | 5.62 | 64.35 |
| SMD × Segregation | 309 | 0.07 | 0.11 | 0 | 0.46 |

London Boroughs

| | N | Mean | SD | Min | Max |
|-----------------------------|----|-------|-------|------|-------|
| % Councilors who are Muslim | 93 | 5.47 | 5.55 | 0.00 | 25.00 |
| SMD | 93 | 0 | 0 | 0 | 0 |
| % Muslim Population | 93 | 7.63 | 4.87 | 0.80 | 24.31 |
| Segregation | 93 | 0.09 | 0.06 | 0.01 | 0.30 |
| Fractionalization | 93 | 0.84 | 0.04 | 0.74 | 0.90 |
| % Labour Vote | 93 | 31.64 | 10.77 | 5.62 | 60.84 |
| SMD × Segregation | 93 | 0 | 0 | 0 | 0 |

Metropolitan Boroughs

| | N | Mean | SD | Min | Max |
|-----------------------------|-----|-------|------|------|-------|
| % Councilors who are Muslim | 216 | 4.23 | 6.16 | 0 | 28.13 |
| SMD | 216 | 0.83 | 0.37 | 0 | 1 |
| % Muslim Population | 216 | 3.75 | 4.08 | 0.17 | 16.08 |
| Segregation | 216 | 0.12 | 0.13 | 0.00 | 0.46 |
| Fractionalization | 216 | 0.68 | 0.15 | 0.30 | 0.86 |
| % Labour Vote | 216 | 36.99 | 9.66 | 7.97 | 64.35 |
| SMD × Segregation | 216 | 0.10 | 0.12 | 0 | 0.46 |

Ward Party Level Regressions**Single-Member Elections**

| | N | Mean | SD | Min | Max |
|-----------------------------------|-------|-------|------|--------|-------|
| Muslim Selected | 8,841 | 0.06 | 0.24 | 0 | 1 |
| % Muslim Population | 8,841 | 4.19 | 9.47 | 0.00 | 66.94 |
| Previous Vote Margin | 8,841 | -0.11 | 0.29 | -0.86 | 0.84 |
| Prev. Vote Margin × % Muslim Pop. | 8,841 | -0.50 | 2.88 | -35.32 | 26.66 |
| Liberal Democrats | 8,841 | 0.30 | 0.46 | 0 | 1 |
| Conservatives | 8,841 | 0.34 | 0.47 | 0 | 1 |

Multi-Member Elections

| | N | Mean | SD | Min | Max |
|-----------------------------------|-------|-------|------|--------|-------|
| Muslim Selected | 3,380 | 0.18 | 0.38 | 0 | 1 |
| % Muslim Population | 3,380 | 7.57 | 6.16 | 0.36 | 47.26 |
| Previous Vote Margin | 3,380 | -0.11 | 0.29 | -0.75 | 0.75 |
| Prev. Vote Margin × % Muslim Pop. | 3,380 | -0.83 | 2.75 | -16.50 | 13.28 |
| Fractionalization | 3,380 | 0.82 | 0.05 | 0.49 | 0.90 |
| Liberal Democrats | 3,380 | 0.30 | 0.46 | 0 | 1 |
| Conservatives | 3,380 | 0.35 | 0.48 | 0 | 1 |

Note: These statistics are based on the samples used in the regressions and thus exclude the outlier Tower Hamlets.

Table A4: The Election of Muslim Councilors in English Municipalities - Additional Variables

| | | | | | | |
|------------------------------|---------------------|---------------------|---------------------|---------------------|---------------------|---------------------|
| SMD | -0.693 (0.543) | -0.672 (0.544) | -0.736 (0.538) | -0.694 (0.544) | -0.827 (0.587) | -0.697 (0.545) |
| % Muslim Population | 0.637** (0.231) | 0.612* (0.243) | 0.642** (0.229) | 0.627** (0.238) | 0.685** (0.243) | 0.651** (0.235) |
| Segregation | 32.06** (10.52) | 32.37** (10.70) | 32.36** (10.52) | 32.53** (10.88) | 31.81** (10.36) | 32.22** (10.47) |
| Fractionalization | -8.480+ (4.368) | -8.902* (4.462) | -7.867+ (4.443) | -8.326+ (4.406) | -7.807+ (4.311) | -7.737+ (4.336) |
| % Labour Vote | -0.0223 (0.0445) | -0.0267 (0.0445) | -0.0121 (0.0438) | -0.0216 (0.0448) | 0.00188 (0.0533) | -0.0227 (0.0443) |
| % Hindu Population | | 0.126 (0.0993) | | | | |
| % Sikh Population | | | -0.218 (0.223) | | | |
| % Jewish Population | | | | 0.0528 (0.128) | | |
| Unemployment Rate | | | | | -0.261 (0.298) | |
| Population Size (Log) | | | | | | -0.493 (1.940) |
| Year | 0.254* (0.113) | 0.251* (0.113) | 0.261* (0.113) | 0.254* (0.113) | 0.330* (0.147) | 0.253* (0.113) |
| Region Fixed Effects | Yes | Yes | Yes | Yes | Yes | Yes |
| Constant | -504.5* (227.1) | -497.6* (227.5) | -519.8* (227.7) | -505.5* (227.4) | -657.7* (295.2) | -498.3* (226.8) |
| Sigma | 4.589*** (0.245) | 4.579*** (0.251) | 4.569*** (0.242) | 4.592*** (0.245) | 4.579*** (0.247) | 4.582*** (0.241) |
| N | 309 | 309 | 309 | 309 | 309 | 309 |
| Pseudo-R ² | 0.232 | 0.232 | 0.232 | 0.232 | 0.232 | 0.232 |
| # of uncensored observations | 173 | 173 | 173 | 173 | 173 | 173 |

The dependent variable is the percent of elected candidates in a local authority election who are Muslim. Tobit coefficients with robust standard errors, clustered on local authority, in parentheses.

+ p<0.10, * p<0.05, ** p<0.01, *** p<0.001

Table A4, cont'd: The Election of Muslim Councilors in English Municipalities - Additional Variables

| | | | | | | | |
|--|----------------------|---------------------|---------------------|---------------------|---------------------|---------------------|---------------------|
| SMD | -0.659 (0.534) | -0.690 (0.492) | -0.500 (0.564) | -0.752 (0.484) | -0.594 (0.550) | -0.689 (0.543) | -0.616 (0.567) |
| % Muslim Population | 0.639** (0.229) | 0.628** (0.221) | 0.626** (0.231) | 0.575* (0.235) | 0.664** (0.224) | 0.652** (0.250) | 0.629** (0.234) |
| Segregation | 31.26** (10.45) | 31.59** (10.30) | 31.41** (10.45) | 33.79** (10.67) | 30.70** (10.21) | 31.75** (10.77) | 32.33** (10.64) |
| Fractionalization | -9.315* (4.437) | -9.391* (4.378) | -9.659* (4.616) | -9.143* (4.552) | -7.786+ (4.573) | -8.460+ (4.369) | -8.466+ (4.415) |
| % Labour Vote | -0.00873 (0.0453) | | -0.0490 (0.0496) | | -0.0238 (0.0433) | -0.0226 (0.0446) | -0.0237 (0.0443) |
| % Lib Dem Vote | 0.0303 (0.0351) | 0.0333 (0.0344) | | | | | |
| % Conservative Vote | | | -0.0440 (0.0352) | -0.0253 (0.0291) | | | |
| % BNP Vote | | | | | 0.135 (0.0934) | | |
| % Respect Vote | | | | | | -0.0652 (0.130) | |
| % Other Party Vote (parties other than LAB, CON, LD) | | | | | | | 0.0231 (0.0406) |
| Year | 0.265* (0.112) | 0.271* (0.105) | 0.236* (0.114) | 0.273** (0.104) | 0.193 (0.120) | 0.256* (0.114) | 0.236* (0.117) |
| Region Fixed Effects | Yes | Yes | Yes | Yes | Yes | Yes | Yes |
| Constant | -526.4* (225.8) | -540.3* (210.8) | -464.9* (229.0) | -542.1** (208.7) | -382.9 (240.9) | -508.5* (229.1) | -469.2* (235.7) |
| Sigma | 4.589*** (0.245) | 4.590*** (0.245) | 4.573*** (0.243) | 4.588*** (0.244) | 4.559*** (0.252) | 4.590*** (0.245) | 4.581*** (0.243) |
| N | 309 | 309 | 309 | 309 | 309 | 309 | 309 |
| Pseudo-R ² | 0.232 | 0.232 | 0.233 | 0.232 | 0.233 | 0.232 | 0.232 |
| # of uncensored observations | 173 | 173 | 173 | 173 | 173 | 173 | 173 |

The dependent variable is the percent of elected candidates in a local authority election who are Muslim. Tobit coefficients with robust standard errors, clustered on local authority, in parentheses.

+ p<0.10, * p<0.05, ** p<0.01, *** p<0.001

Table A5: The Election of Muslim Councilors - Difference-in-Difference Regressions - Additional Variables

| | Comparison with 2006 | | | | | |
|-------------------------------------|----------------------|---------------------|---------------------|---------------------|---------------------|---------------------|
| Treatment Group | 1.011 (0.868) | 1.081 (0.866) | 1.002 (0.874) | 0.934 (0.867) | 1.055 (0.857) | 1.016 (0.875) |
| Post Treatment | 0.982 (0.731) | 0.974 (0.732) | 0.992 (0.738) | 0.977 (0.734) | 1.098 (0.833) | 0.981 (0.735) |
| Treatment Group × Post Treatment | 0.462 (0.914) | 0.471 (0.917) | 0.449 (0.926) | 0.467 (0.918) | 0.343 (1.054) | 0.462 (0.918) |
| % Muslim Population | 0.731*** (0.152) | 0.721*** (0.162) | 0.736*** (0.151) | 0.748*** (0.151) | 0.748*** (0.143) | 0.731*** (0.149) |
| Segregation | 13.57 (8.440) | 13.72 (8.560) | 13.56 (8.500) | 12.92 (8.402) | 13.34 (8.256) | 13.58 (8.608) |
| Fractionalization | -8.387* (3.257) | -8.495* (3.289) | -8.377* (3.331) | -8.508** (3.202) | -8.218* (3.475) | -8.382* (3.276) |
| % Labour Vote | -0.0512 (0.0323) | -0.0525 (0.0325) | -0.0495 (0.0325) | -0.0520 (0.0323) | -0.0448 (0.0404) | -0.0513 (0.0328) |
| % Hindu Population | | 0.0411 (0.0984) | | | | |
| % Sikh Population | | | -0.0640 (0.191) | | | |
| % Jewish Population | | | | -0.0880 (0.0989) | | |
| Unemployment Rate | | | | | -0.0736 (0.233) | |
| Population Size (Log) | | | | | | -0.0186 (0.962) |
| Constant | 6.273* (3.095) | 6.311* (3.114) | 6.257+ (3.152) | 6.506* (3.069) | 6.290* (3.084) | 6.497 (12.24) |
| N | 134 | 134 | 134 | 134 | 134 | 134 |
| R ² | 0.769 | 0.770 | 0.770 | 0.770 | 0.769 | 0.769 |

The dependent variable is the percent of elected candidates in a local authority election who are Muslim. OLS coefficients with robust standard errors, clustered on local authority, in parentheses.

+ p<0.10, * p<0.05, ** p<0.01, *** p<0.001

Table A5, cont'd: The Election of Muslim Councilors - Difference-in-Difference Regressions - Additional Variables

| | Comparison with 2006 | | | | | | |
|--|----------------------|---------------------|---------------------|---------------------|---------------------|---------------------|---------------------|
| Treatment Group | 1.015 (0.939) | 0.512 (0.998) | 0.937 (0.931) | 0.796 (0.977) | 0.985 (0.856) | 0.828 (0.950) | 0.999 (0.873) |
| Post Treatment | 0.980 (0.726) | 1.286+ (0.666) | 0.963 (0.747) | 1.271+ (0.672) | 0.886 (0.756) | 0.857 (0.763) | 0.930 (0.751) |
| Treatment Group × Post Treatment | 0.462 (0.917) | 0.122 (0.827) | 0.492 (0.930) | 0.0996 (0.827) | 0.493 (0.931) | 0.574 (0.935) | 0.518 (0.936) |
| % Muslim Population | 0.731*** (0.151) | 0.665*** (0.150) | 0.730*** (0.152) | 0.667*** (0.155) | 0.747*** (0.153) | 0.693*** (0.173) | 0.728*** (0.150) |
| Segregation | 13.58 (8.365) | 15.70+ (8.294) | 13.47 (8.488) | 16.18+ (8.454) | 12.91 (8.458) | 14.45 (8.784) | 13.72 (8.343) |
| Fractionalization | -8.366* (3.203) | -9.205** (3.326) | -8.517* (3.291) | -8.371* (3.284) | -7.198* (3.152) | -8.423* (3.296) | -8.159* (3.193) |
| % Labour Vote | -0.0515 (0.0329) | | -0.0561 (0.0395) | | -0.0546 (0.0328) | -0.0521 (0.0324) | -0.0527 (0.0330) |
| % Lib Dem Vote | -0.00050 (0.0277) | 0.0146 (0.0294) | | | | | |
| % Conservative Vote | | | -0.0070 (0.025) | 0.0124 (0.0193) | | | |
| % BNP Vote | | | | | 0.0827 (0.0769) | | |
| % Respect Vote | | | | | | 0.102 (0.0729) | |
| % Other Party Vote (parties other than LAB, CON, LD) | | | | | | | 0.0104 (0.0267) |
| Constant | 6.273* (3.110) | 5.202+ (3.010) | 6.797+ (3.709) | 4.342 (3.099) | 5.311+ (2.993) | 6.538* (3.190) | 6.024+ (3.063) |
| N | 134 | 134 | 134 | 134 | 134 | 134 | 134 |
| R ² | 0.769 | 0.764 | 0.769 | 0.764 | 0.771 | 0.770 | 0.769 |

The dependent variable is the percent of elected candidates in a local authority election who are Muslim. OLS coefficients with robust standard errors, clustered on local authority, in parentheses.

+ p<0.10, * p<0.05, ** p<0.01, *** p<0.001

Table A5 cont'd: The Election of Muslim Councilors - Difference-in-Difference Regressions - Additional Variables (Comparison with 2006, 2007, and 2008)

| | Comparison with 2006, 2007, and 2008 | | | | | |
|-------------------------------------|--------------------------------------|----------|----------|----------|----------|----------|
| Treatment Group | 1.879* | 1.912* | 1.862* | 1.811* | 1.877* | 1.891* |
| | (0.856) | (0.849) | (0.865) | (0.854) | (0.857) | (0.862) |
| Post Treatment | 0.940 | 0.936 | 0.960 | 0.936 | 0.933 | 0.939 |
| | (0.727) | (0.729) | (0.734) | (0.730) | (0.804) | (0.731) |
| Treatment Group × Post Treatment | -0.460 | -0.457 | -0.482 | -0.456 | -0.455 | -0.459 |
| | (0.784) | (0.786) | (0.792) | (0.787) | (0.841) | (0.787) |
| % Muslim Population | 0.751*** | 0.746*** | 0.761*** | 0.767*** | 0.751*** | 0.752*** |
| | (0.142) | (0.153) | (0.143) | (0.141) | (0.138) | (0.140) |
| Segregation | 14.27+ | 14.35+ | 14.25+ | 13.69+ | 14.29+ | 14.29+ |
| | (7.377) | (7.505) | (7.451) | (7.329) | (7.305) | (7.507) |
| Fractionalization | -3.349 | -3.399 | -3.336 | -3.457 | -3.357 | -3.339 |
| | (2.739) | (2.750) | (2.865) | (2.688) | (2.865) | (2.753) |
| % Labour Vote | -0.0582+ | -0.0588+ | -0.0548+ | -0.0589+ | -0.0585 | -0.0583+ |
| | (0.0301) | (0.0302) | (0.0302) | (0.0301) | (0.0354) | (0.0305) |
| % Hindu Population | | 0.0194 | | | | |
| | | (0.102) | | | | |
| % Sikh Population | | | -0.124 | | | |
| | | | (0.145) | | | |
| % Jewish Population | | | | -0.0789 | | |
| | | | | (0.0954) | | |
| Unemployment Rate | | | | | 0.00407 | |
| | | | | | (0.214) | |
| Population size (log) | | | | | | -0.0389 |
| | | | | | | (0.867) |
| Constant | 2.074 | 2.091 | 2.047 | 2.282 | 2.072 | 2.542 |
| | (2.660) | (2.672) | (2.751) | (2.642) | (2.662) | (11.03) |
| N | 134 | 134 | 134 | 134 | 134 | 134 |
| R ² | 0.804 | 0.804 | 0.806 | 0.805 | 0.804 | 0.804 |

The dependent variable is the percent of elected candidates in a local authority who are Muslim. OLS coefficients with robust standard errors, clustered on local authority, in parentheses.

+ p<0.10, * p<0.05, ** p<0.01, *** p<0.001

Table A5 cont'd: The Election of Muslim Councilors - Difference-in-Difference Regressions - Additional Variables (Comparison with 2006, 2007, and 2008)

| | Comparison with 2006, 2007, and 2008 | | | | | | |
|---|--------------------------------------|----------|----------|----------|----------|----------|----------|
| Treatment Group | 1.848+ | 1.293 | 1.664+ | 1.497 | 1.839* | 1.732+ | 1.851* |
| | (0.935) | (0.984) | (0.933) | (0.979) | (0.842) | (0.943) | (0.862) |
| Post Treatment | 0.948 | 1.284+ | 0.888 | 1.283+ | 0.847 | 0.836 | 0.819 |
| | (0.719) | (0.665) | (0.736) | (0.670) | (0.754) | (0.757) | (0.742) |
| Treatment Group × Post Treatment | -0.458 | -0.759 | -0.357 | -0.834 | -0.465 | -0.371 | -0.351 |
| | (0.788) | (0.727) | (0.813) | (0.711) | (0.797) | (0.809) | (0.805) |
| % Muslim Population | 0.752*** | 0.684*** | 0.749*** | 0.671*** | 0.765*** | 0.721*** | 0.741*** |
| | (0.142) | (0.141) | (0.142) | (0.145) | (0.142) | (0.165) | (0.139) |
| Segregation | 14.16+ | 16.08* | 14.03+ | 17.18* | 13.95+ | 14.96+ | 14.87* |
| | (7.408) | (7.382) | (7.427) | (7.387) | (7.321) | (7.748) | (7.262) |
| Fractionalization | -3.492 | -4.579 | -3.734 | -3.614 | -2.286 | -3.369 | -2.742 |
| | (2.949) | (3.134) | (2.862) | (2.887) | (2.830) | (2.777) | (2.715) |
| % Labour Vote | -0.0567+ | | -0.0721+ | | -0.0621* | -0.0589+ | -0.0618* |
| | (0.0296) | | (0.0362) | | (0.0310) | (0.0301) | (0.0306) |
| % Lib Dem Vote | 0.00321 | 0.0203 | | | | | |
| | (0.0240) | (0.0268) | | | | | |
| % Conservative Vote | | | -0.0199 | 0.00508 | | | |
| | | | (0.0238) | (0.0176) | | | |
| % BNP Vote | | | | | 0.0759 | | |
| | | | | | (0.0641) | | |
| % Respect Vote | | | | | | 0.0847 | |
| | | | | | | (0.0705) | |
| % Other Party Vote (parties other than LAB, CON, LD) | | | | | | | 0.0240 |
| | | | | | | | (0.0226) |
| Constant | 2.081 | 1.032 | 3.578 | 0.481 | 1.223 | 2.285 | 1.436 |
| | (2.681) | (2.694) | (3.455) | (2.825) | (2.671) | (2.745) | (2.708) |
| N | 134 | 134 | 134 | 134 | 134 | 134 | 134 |
| R ² | 0.804 | 0.797 | 0.805 | 0.796 | 0.805 | 0.804 | 0.805 |

The dependent variable is the percent of elected candidates in a local authority election who are Muslim. OLS coefficients with robust standard errors, clustered on local authority, in parentheses.

+ p<0.10, * p<0.05, ** p<0.01, *** p<0.001

Table A6: The Selection of Muslim Candidates by Local Parties, by Electoral Rule – Including Results Outside of London

| | All | SMD | MMD | Outside of London | | | |
|--|------------------------|------------------------|------------------------|------------------------|------------------------|----------------------|----------------------|
| | | | | MMD | | | |
| % Muslim Population | 0.0642*** (0.00262) | 0.0606*** (0.00267) | 0.0672*** (0.00279) | 0.0810*** (0.00586) | 0.0829*** (0.00681) | 0.290*** (0.0594) | 0.322*** (0.0611) |
| Previous Vote Margin | -0.0291 (0.0980) | -0.436*** (0.104) | -0.816*** (0.115) | -0.0548 (0.104) | -0.196 (0.204) | 0.431 (0.502) | -0.855 (0.795) |
| SMD | -0.578*** (0.0670) | | | | | | |
| Previous Vote Margin × SMD | -0.404** (0.140) | | | | | | |
| Fractionalization | | | | -0.282 (0.599) | -0.270 (0.600) | 0.305 (1.415) | 0.242 (1.366) |
| Previous Vote Margin × % Muslim Population | | | 0.0408*** (0.00919) | | 0.0166 (0.0215) | | 0.288 (0.186) |
| Liberal Democrats | -0.170** (0.0522) | -0.170* (0.0705) | -0.143+ (0.0734) | -0.163* (0.0780) | -0.146+ (0.0806) | 0.320 (0.354) | 0.317 (0.357) |
| Conservatives | -0.416*** (0.0542) | -0.437*** (0.0851) | -0.370*** (0.0844) | -0.394*** (0.0707) | -0.368*** (0.0775) | -0.318 (0.324) | -0.330 (0.321) |
| Year | 0.0516*** (0.00954) | 0.0535*** (0.0155) | 0.0540*** (0.0155) | 0.0494*** (0.0119) | 0.0491*** (0.0119) | | |
| Region Fixed Effects | Yes | Yes | Yes | No | No | Yes | Yes |
| Constant | -104.8*** (19.17) | -109.3*** (31.07) | -110.4*** (31.10) | -100.5*** (23.98) | -99.82*** (23.98) | -6.06*** (0.633) | -6.13*** (0.660) |
| N | 12,221 | 8,841 | 8,841 | 3,380 | 3,380 | 204 | 204 |
| Pseudo-R ² | 0.295 | 0.354 | 0.362 | 0.144 | 0.144 | 0.551 | 0.564 |

The dichotomous dependent variable is whether or not a party runs a Muslim candidate, with parties that run a Muslim candidate coded one and zero otherwise. Probit coefficients with robust standard errors, clustered on the ward, in parentheses. MMD elections held in local authorities outside of London took place in 2007 and in 2003, but since the earlier election cannot be used given the specification, regressions do not include a year trend.

+ p<0.10, * p<0.05, ** p<0.01, *** p<0.001

Table A7: The Selection of Muslim Candidates by Local Parties, by Electoral Rule - Previous Vote Margin above Median

| | All | SMD | SMD | MMD | MMD | Outside of London | |
|---|------------------------|------------------------|------------------------|------------------------|------------------------|----------------------|----------------------|
| | | | | | | MMD | |
| % Muslim Population | 0.0643*** (0.00261) | 0.0606*** (0.00266) | 0.0480*** (0.00322) | 0.0808*** (0.00587) | 0.0742*** (0.00705) | 0.286*** (0.0585) | 0.216*** (0.0600) |
| Previous Vote Margin Above Median | 0.0424 (0.0585) | -0.164* (0.0673) | -0.451*** (0.0727) | 0.0399 (0.0624) | -0.0745 (0.117) | 0.397 (0.303) | -0.300 (0.372) |
| SMD | -0.423*** (0.0783) | | | | | | |
| Previous Vote Margin Above Median × SMD | -0.210* (0.0874) | | | | | | |
| Fractionalization | | | | -0.290 (0.598) | -0.298 (0.598) | 0.164 (1.387) | 0.196 (1.326) |
| Previous Vote Margin Above Median × % Muslim Population | | | 0.0297*** (0.00501) | | 0.0132 (0.0118) | | 0.146+ (0.0776) |
| Liberal Democrats | -0.149** (0.0522) | -0.143* (0.0700) | -0.125+ (0.0733) | -0.143+ (0.0783) | -0.120 (0.0794) | 0.328 (0.355) | 0.307 (0.346) |
| Conservatives | -0.398*** (0.0541) | -0.404*** (0.0837) | -0.324*** (0.0813) | -0.389*** (0.0712) | -0.354*** (0.0757) | -0.360 (0.325) | -0.427 (0.333) |
| Year | 0.0515*** (0.00954) | 0.0538*** (0.0154) | 0.0539*** (0.0155) | 0.0493*** (0.0120) | 0.0485*** (0.0120) | | |
| Region Fixed Effects | Yes | Yes | Yes | No | No | Yes | Yes |
| Constant | -104.8*** (19.15) | -109.8*** (30.95) | -109.9*** (31.06) | -100.3*** (24.08) | -98.50*** (24.04) | -6.25*** (0.619) | -5.73*** (0.587) |
| N | 12,221 | 8,841 | 8,841 | 3,380 | 3,380 | 204 | 204 |
| Pseudo-R ² | 0.294 | 0.352 | 0.366 | 0.144 | 0.145 | 0.556 | 0.569 |

The dichotomous dependent variable is whether or not a party runs a Muslim candidate, with parties that run a Muslim candidate coded one and zero otherwise. Probit coefficients with robust standard errors, clustered on the ward, in parentheses. MMD elections held in local authorities outside of London took place in 2007 and in 2003, but since the earlier election cannot be used given the specification, regressions do not include a year trend.

+ p<0.10, * p<0.05, ** p<0.01, *** p<0.001

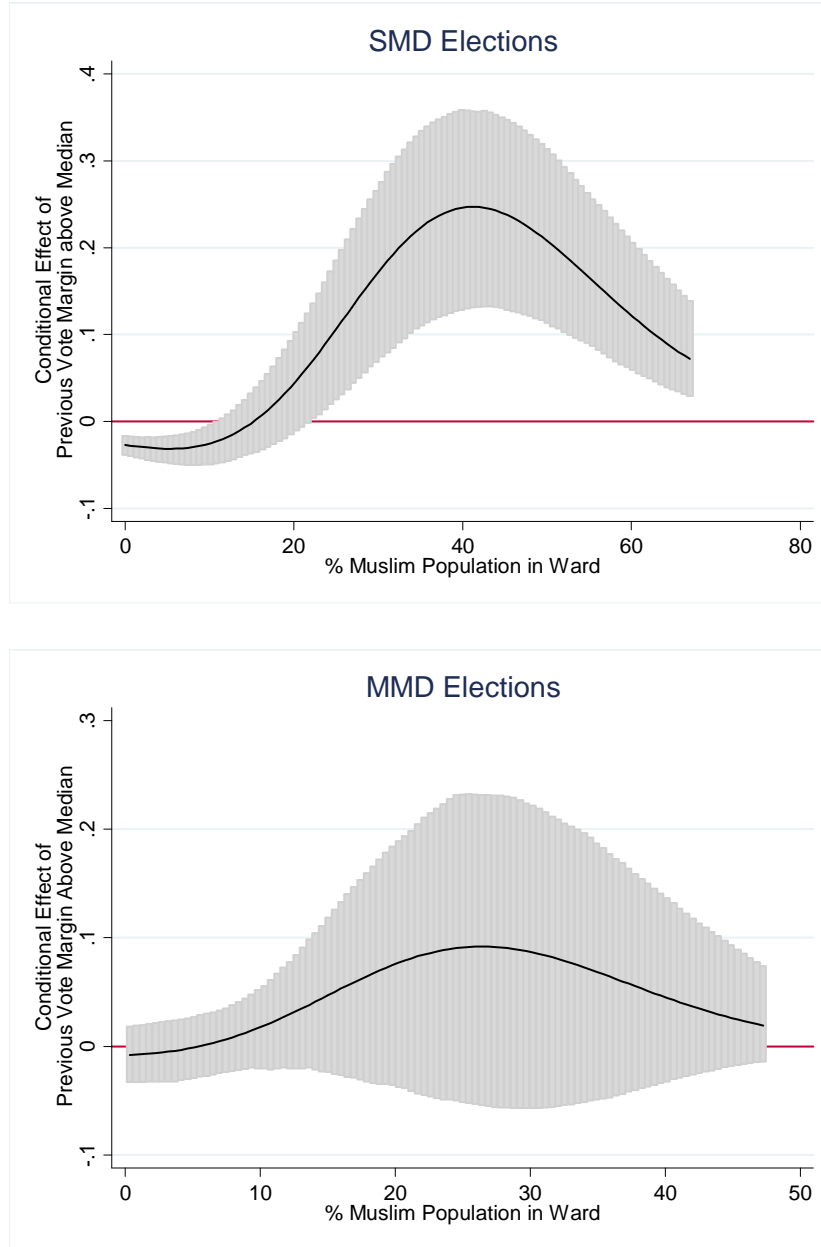


Figure A1: Conditional Effects of Parties' Previous Vote Margin Above Median on the Selection of Muslim Candidates, by Electoral Rule

Note: The solid lines trace the conditional effects of changing *Previous Vote Margin Above Median* from zero to one; the shaded areas cover the 95 percent confidence intervals surrounding the effects. To simulate these effects in SMD elections, the effect is estimated for the Labour Party in 2006 in the Yorkshire and the Humber Region. In MMD Elections, the effect is estimated for the Labour Party in 2006 in London in a ward with a mean fractionalization index.