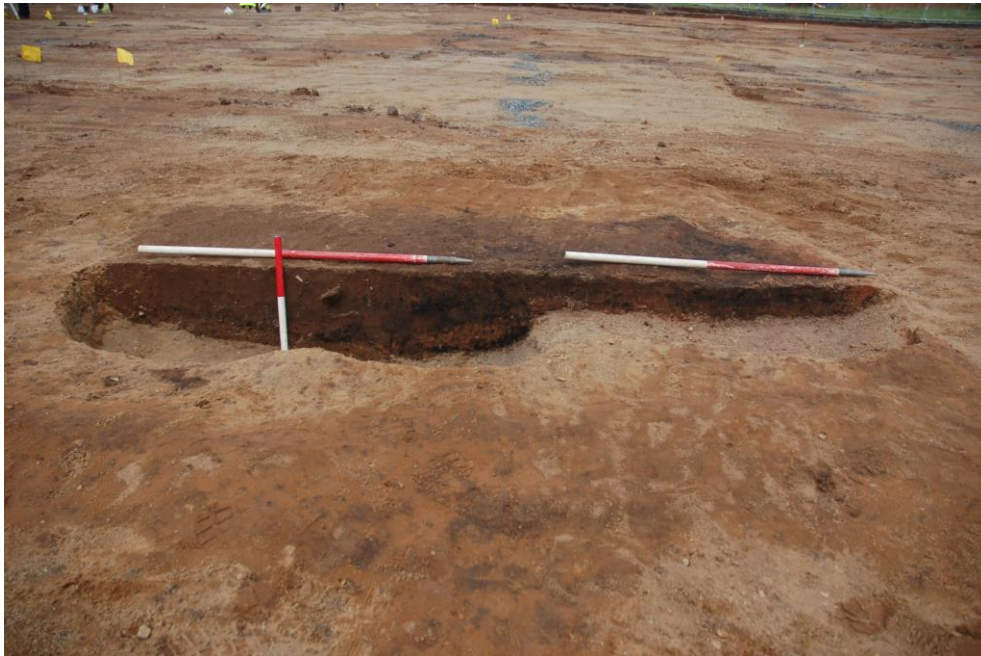


ONLINE FIG. 1. South-facing section of fire-pit 465.



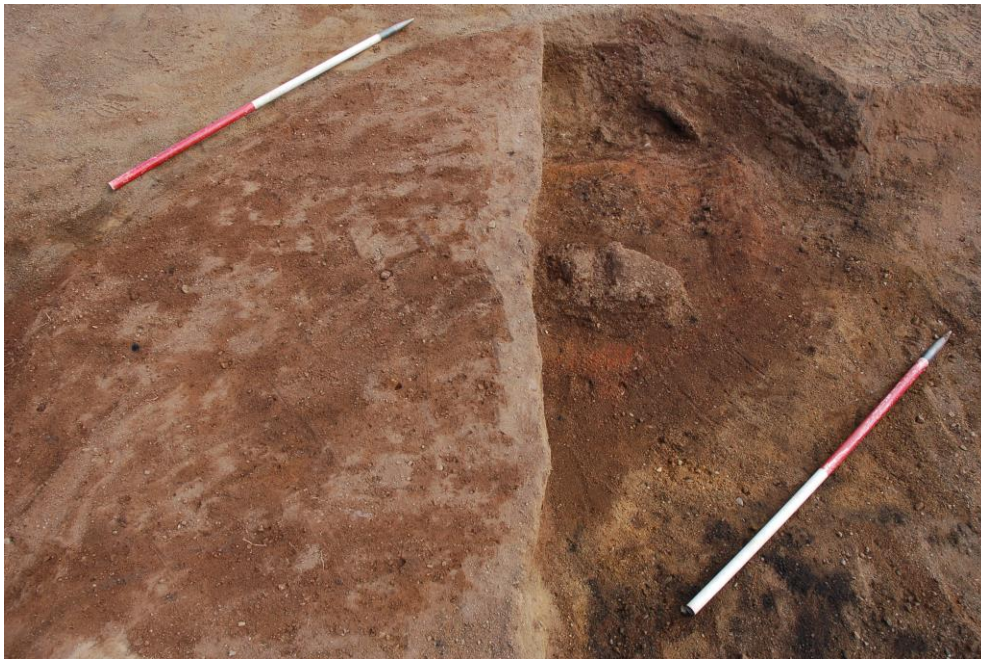
ONLINE FIG 2. West-facing section of fire-pit 515.



ONLINE FIG. 3. Ovens 178 and 179 and ash pit 180 from the north.



ONLINE FIG. 4. Clay lump and possible lining in fire-pit 404.



ONLINE FIG. 5. North-facing section of fire-pit 514.

