

## Online Appendix

### A. Data and research design

#### A.1 Coding strategy

The different values taken by the *position* variable are:

- soldier
- sub-officer
- junior officer
- senior officer
- general officer
- student
- clerk
- district officer
- administrator
- staff
- chief staff
- senior civil servant
- secretary-general
- colonial governor
- *préfet*
- parliamentarian
- minister
- public sector (undetermined)
- private sector (undetermined)

## B. Additional figures

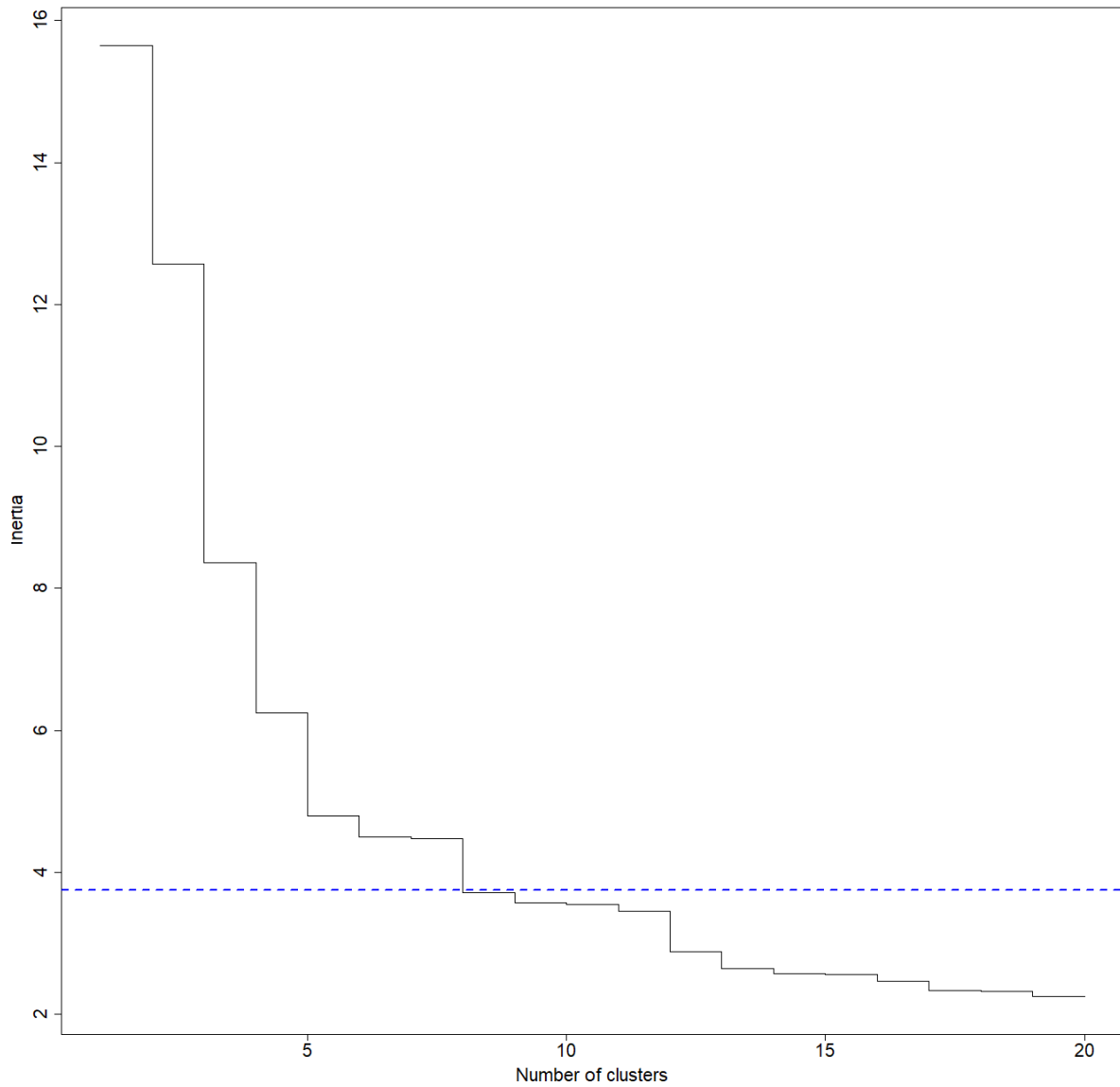


Figure B1. Optimal number of classes based on pairwise dissimilarities

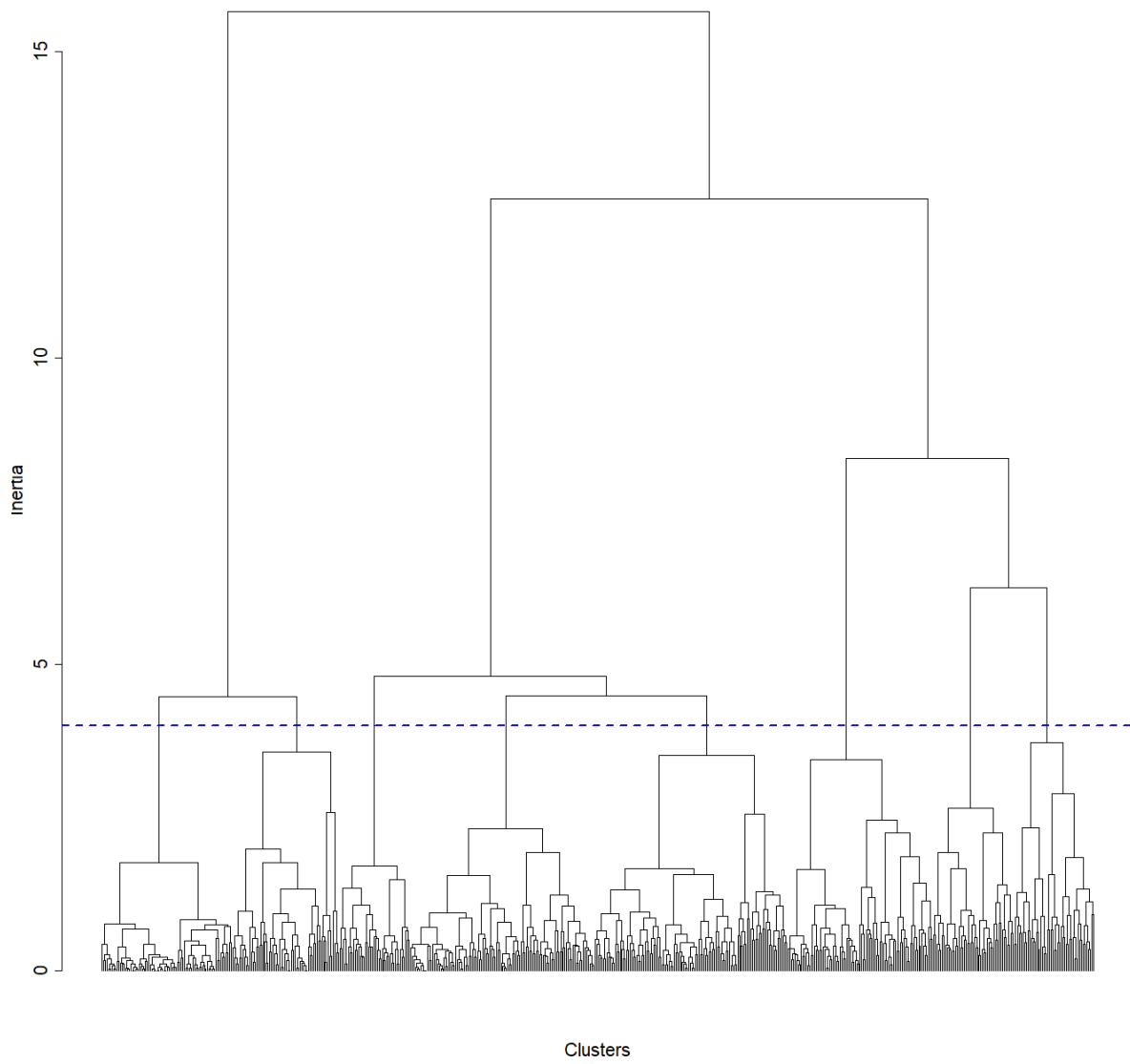


Figure B2. Optimal number of classes based on dendrogram

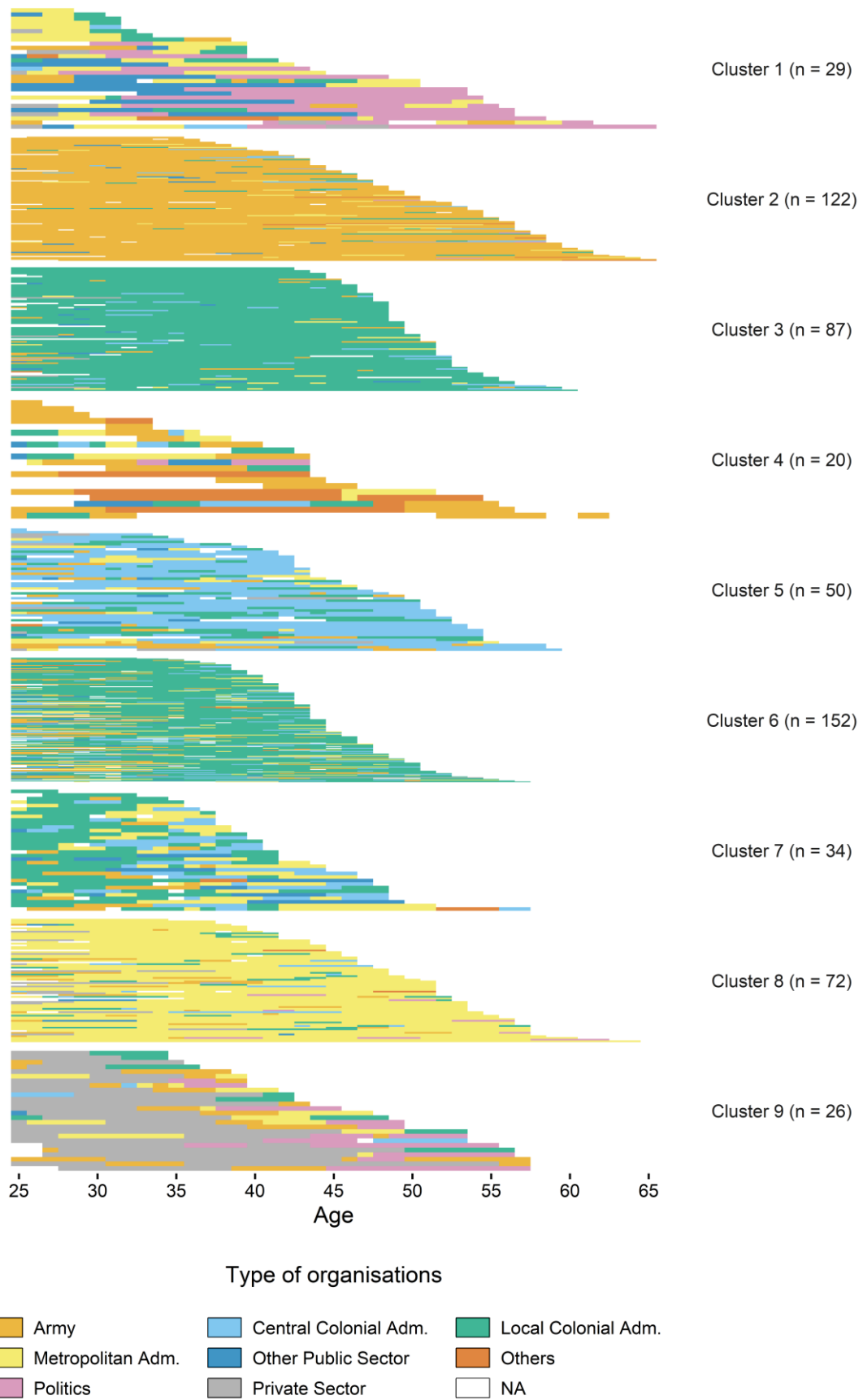


Figure B3. Distribution of states from age 25 to age 65