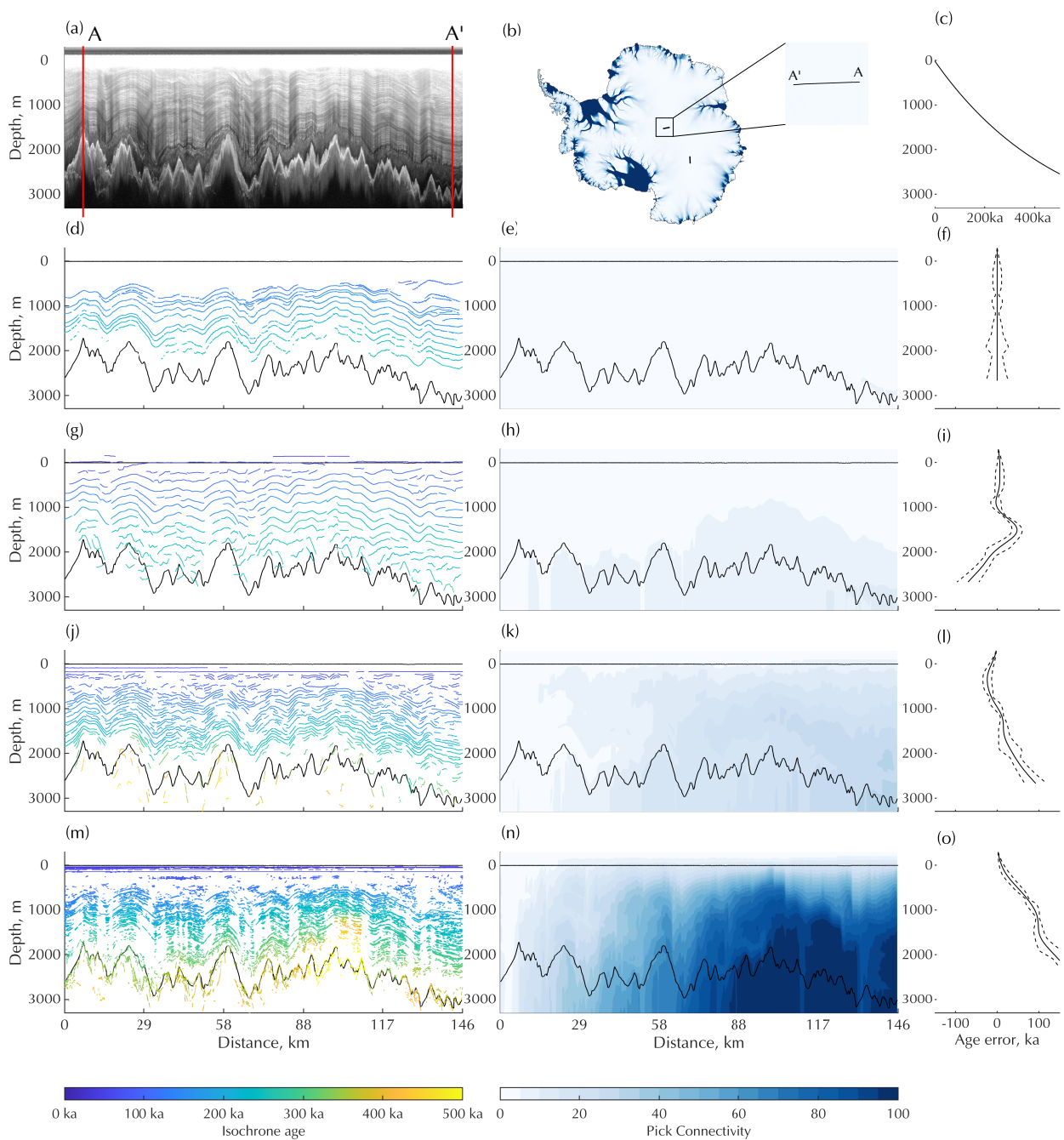


Supplementary figure to *A comparison of automated approaches to extracting englacial-layer geometry across ice sheets*, Delf et al.



Supplementary Figure 1: Application of auto-tracking algorithms to the second of the example datasets, similar to Fig. 1 in the main text. (a) Profile from A to A', with (b) location in Antarctica and (c) starting age-depth profile at A. (d) Manually-picked reference dataset with (e) isochrone connectivity metric and (f) profile of misfit between reference picks age-depth relationship with uncertainties propagated through the picks. (g) Englacial picks, (h) isochrone-connectivity metric and (i) misfit profile for ARESELP algorithm. (j) Englacial picks, (k) isochrone-connectivity metric and (l) misfit profile for Steger algorithm. (m) Englacial picks, (n) isochrone-connectivity metric and (o) misfit profile for Sobel-Feldman algorithm.