

Figure S1. (a) *Monoon liukiense* (Hatus.) B. Xue et R.M.K. Saunders grows on Iriomote Island, Hateruma Island, and Orchid Island. (b) Ripening fruits, 01 June 2015, (c) seedlings and saplings under the conspecific adults, 10 February 2016, in the habitat on Iriomote Island, Japan.

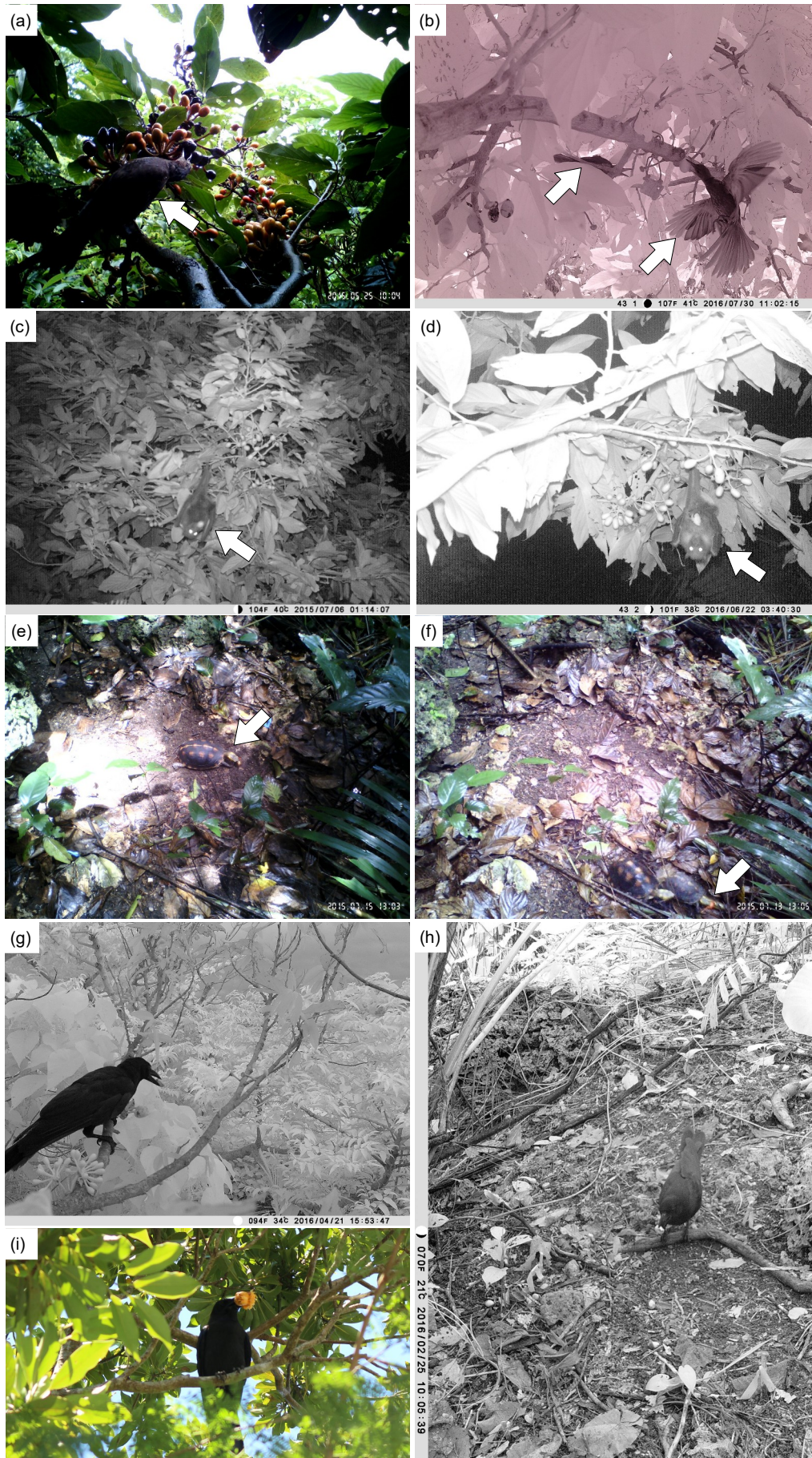


Figure S2. Animals observed in the canopies and on the ground in the habitat of *Monoon liukiense* (Hatus.) B. Xue et R.M.K. Saunders on Iriomote Island, Japan, during three fruiting seasons from June 2015 to August 2016. (a) The fruits appeared larger than the gape width of the brown-eared bulbul (*Hypsipetes amaurotis stejnegeri* (Hartert, 1907)). (b) Two or more bulbuls occasionally visited simultaneously. (c) Yaeyama flying fox (*Pteropus dasymallus yayeyamae* Kuroda, 1933) holding the fruit in its mouth. (d) Flying fox could manipulate the fruit with its foot. (e) The yellow-margined box turtle (*Cuora flavomarginata evelynae* Ernst and Lovich, 1990) consumed the pulp. (f) A turtle carrying the fruit in its mouth to prevent another turtle from snatching it. (g) Large-billed crow (*Corvus macrorhynchos osai* (Ogawa, 1905)) taking the seed out from the fruit. (h) Large-billed crow also carried away the fruit from the ground. (i) A large-billed crow carrying a fruit of *Pandanus odoratissimus* L. fil., 11 June 2017.