

## Singleword list

Word	Months														
	16	17	18	19	20	21	22	23	24	25	26	27	28	29	30
<b>Action words (n=103)</b> <i>Action words (n=103)</i>															
drop	2.7	7.4	5.8	17.3	16.2	17.8	32.2	40.3	38.5	40.1	57.0	54.8	59.5	65.0	81.2
eat	25.6	30.8	38.8	57.1	55.5	66.3	70.0	81.7	81.4	87.8	88.0	91.1	94.0	92.5	100.0
fall	9.4	6.1	14.5	31.6	29.9	42.1	54.4	68.2	59.2	73.8	79.0	77.8	79.7	77.5	97.5
feed	1.3	4.9	2.9	15.3	14.5	14.7	22.2	38.4	30.3	37.3	52.0	60.1	53.5	65.0	81.2
N	74	81	103	98	117	95	90	104	135	107	100	113	84	80	80

**Corpora:** Words and Sentences

**Language:** american

**Gender:** female and male

**Display:** proportion

**Months:** from 16 to 30

**Sorted by:** groups groups

**Show:** said

Gender:  , Months: from  to  , Display:  , Show:  ,

Sorted by:

**Available CLEX mappings(normal):** [Change to advanced dex view](#)

**Description on how to read the buttons:**

dex language (words matching for dex language / total number of words selected on current language)

danish (4/4)

## Vocabulary - American

months	N	mean	sd	min	p5	p10	p25	p50	p75	p90	p95	max
16	74	0.39	0.76	0	0	0	0	0	1	1	2	4
17	81	0.49	0.91	0	0	0	0	0	1	1	2	4
18	103	0.62	0.95	0	0	0	0	0	1	2	3	4
19	98	1.21	1.32	0	0	0	0	1	2	3	4	4
20	117	1.16	1.22	0	0	0	0	1	2	3	4	4
21	95	1.41	1.32	0	0	0	0	1	2	3	4	4
22	90	1.79	1.45	0	0	0	0	2	3	4	4	4
23	104	2.29	1.41	0	0	0	1	2	4	4	4	4
24	135	2.10	1.42	0	0	0	1	2	3	4	4	4
25	107	2.39	1.34	0	0	1	1	2	4	4	4	4
26	100	2.76	1.32	0	0	1	2	3	4	4	4	4
27	113	2.84	1.34	0	0	1	2	3	4	4	4	4
28	84	2.87	1.26	0	1	1	2	3	4	4	4	4
29	80	3.00	1.34	0	0	1	2	4	4	4	4	4
30	80	3.60	0.74	1	2	3	3	4	4	4	4	4

Language: American

Corpora: Words and Sentences

Gender: female and male

Months: from 16 to 30

Sorted by: months

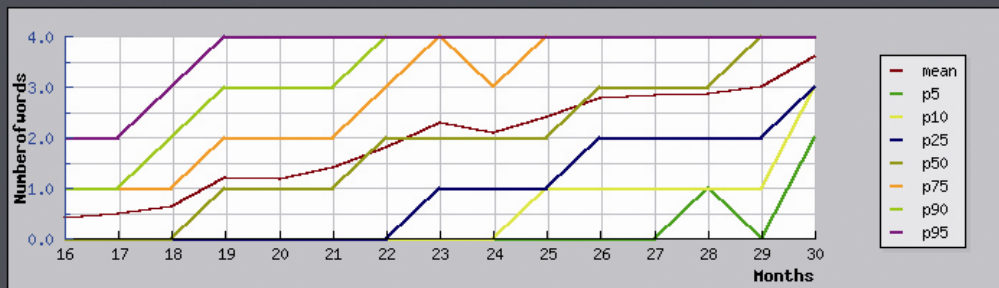
Items: drop, eat, fall, feed,

Show: said

Gender:  , Months: from  to  , Display graph:

Sorted by:

Columns	N	mean	sd	min	p5	p10	p25	p50	p75	p90	p95	max
Remove	<input type="checkbox"/>	<input type="checkbox"/>	<input type="checkbox"/>	<input type="checkbox"/>	<input type="checkbox"/>	<input type="checkbox"/>	<input type="checkbox"/>	<input type="checkbox"/>	<input type="checkbox"/>	<input type="checkbox"/>	<input type="checkbox"/>	<input type="checkbox"/>



## fall / drop - [ american ]

fall	drop	number of children
-	-	650
-	+	25
+	-	292
+	+	494

**Corpora:** Words and Gestures

**Languages:** american

**Gender:** female and male

**Display:** proportion

**Months:** from 8 to 18

Gender:  , Months: from  to  , Display:  ,

Sorted by:  , Display graph:

Columns	N	non	said	understood
Remove	<input type="checkbox"/>	<input type="checkbox"/>	<input type="checkbox"/>	<input type="checkbox"/>

**Available CLEX mappings(normal):** [Change to advanced clex view](#)

danish

## Singleword list

Word	Language	Months														
		16	17	18	19	20	21	22	23	24	25	26	27	28	29	30
daddy	american	95.9	95.0	92.2	94.9	94.8	91.5	94.4	98.0	96.3	96.2	99.0	98.2	97.6	97.5	98.7
far [daddy]	danish	67.9	76.1	88.7	84.8	90.3	90.6	96.6	96.8	96.7	95.6	99.0	97.1	98.4	98.9	100.0
mommy	american	93.2	96.3	95.1	95.9	95.7	94.7	96.6	100.0	98.5	97.2	99.0	98.2	96.4	97.5	98.7
mor [mommy]	danish	58.7	69.8	79.3	81.9	89.2	89.4	95.7	94.7	95.8	96.3	99.0	97.7	97.3	98.9	99.4

**Corpora:** Words and Sentences

**Languages:** american cross danish

**Gender:** female and male

**Display:** proportion

**Months:** from 16 to 30

**Show:** said

Gender:  , Months: from  to  , Display:  , Show: