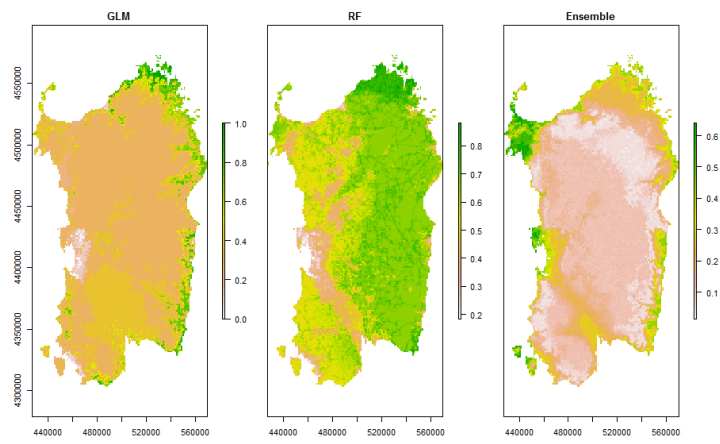


Table S3 Summary of all 32 model performances (Area Under the Curve, AUC and True Skill Statistic, TSS) and the respective outputs of the two model techniques used. Techniques with one or both unsatisfactory performances (AUC < 0.7 and TSS < 0.3) were marked in red and the ensemble was not applied.

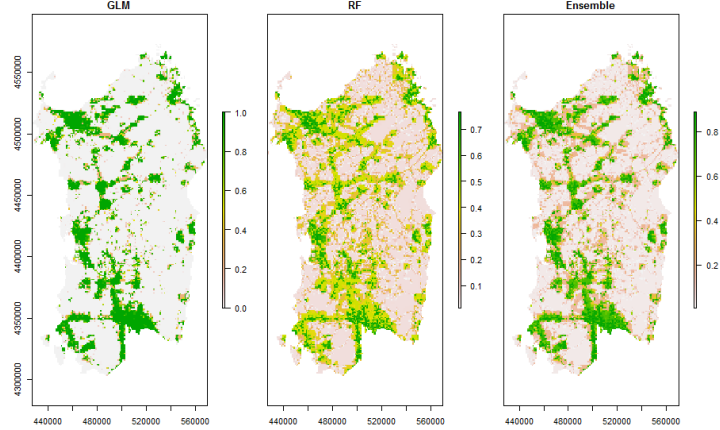
Anchusa crisper
subsp. *maritima*

GLM
AUC **TSS**
0.917 0.917
RF
AUC **TSS**
0.755 0.708



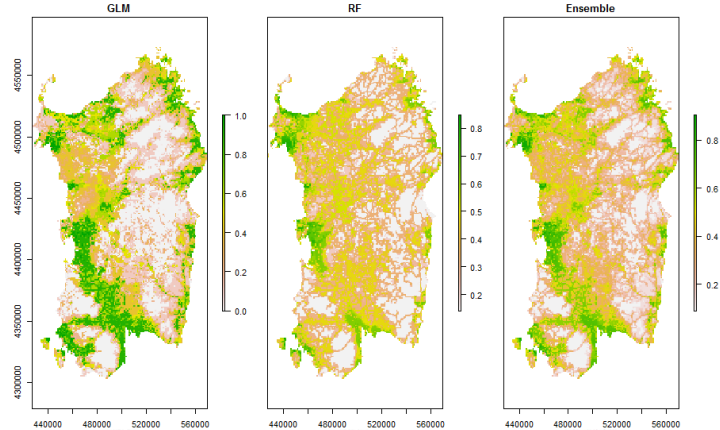
Anchusa crisper
subsp. *crispa*

GLM
AUC **TSS**
0.833 0.810
RF
AUC **TSS**
0.773 0.722



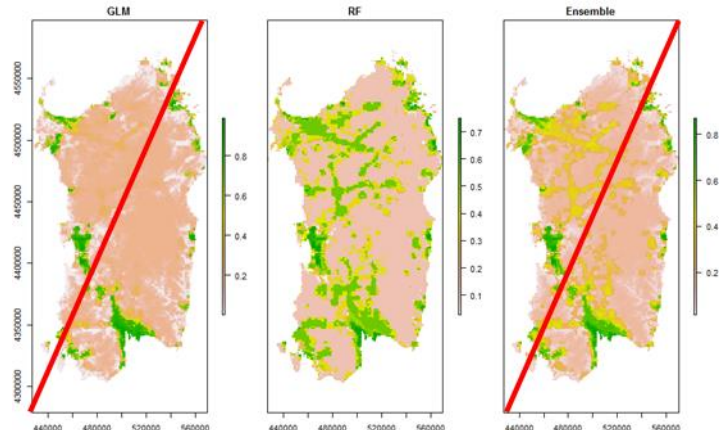
Anchusa littorea

GLM
AUC **TSS**
0.917 0.917
RF
AUC **TSS**
0.755 0.708



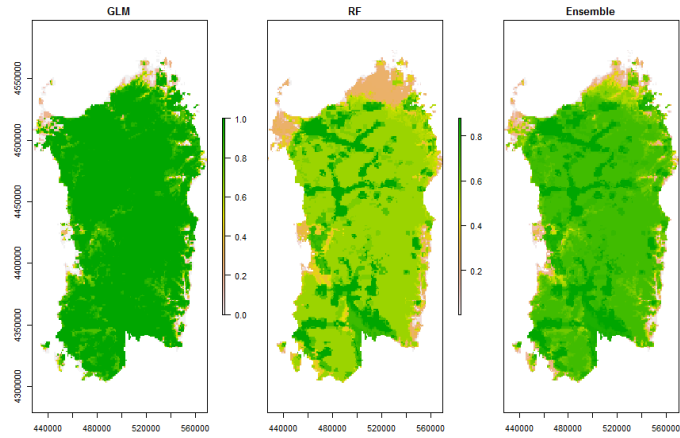
Anemone palmata

GLM
AUC **TSS**
0.488 0.307
RF
AUC **TSS**
0.796 0.758



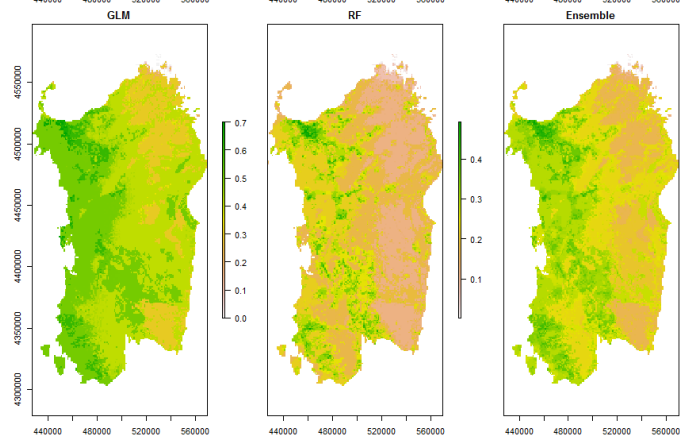
Armeria pungens

GLM	
AUC	TSS
1	1
RF	
AUC	TSS
1	1



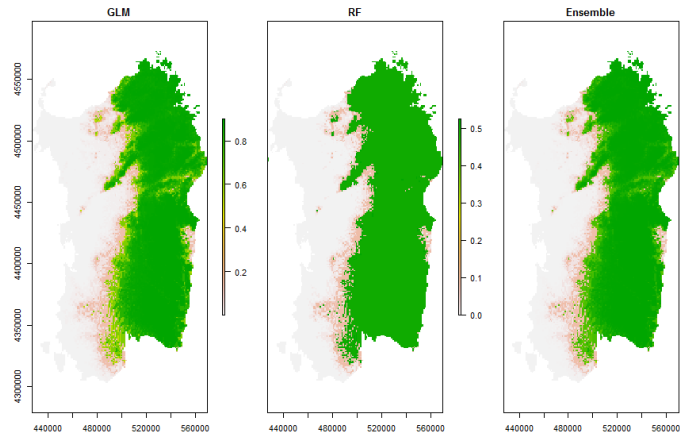
Artemisia gallica
subsp. *densiflora*

GLM	
AUC	TSS
0.812	0.771
RF	
AUC	TSS
1	1



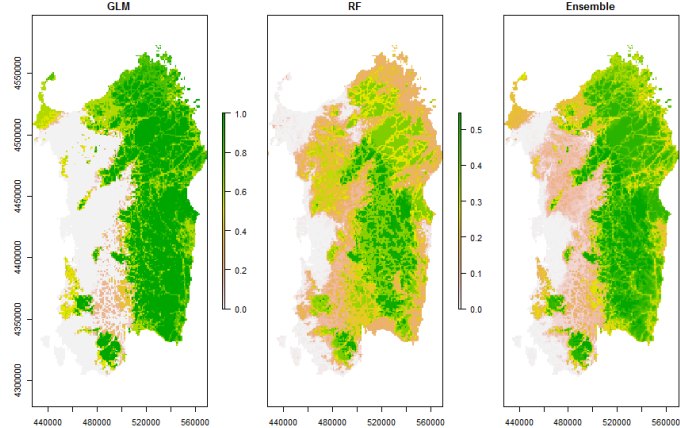
Bellium crassifolium

GLM	
AUC	TSS
0.949	0.941
RF	
AUC	TSS
0.975	0.950



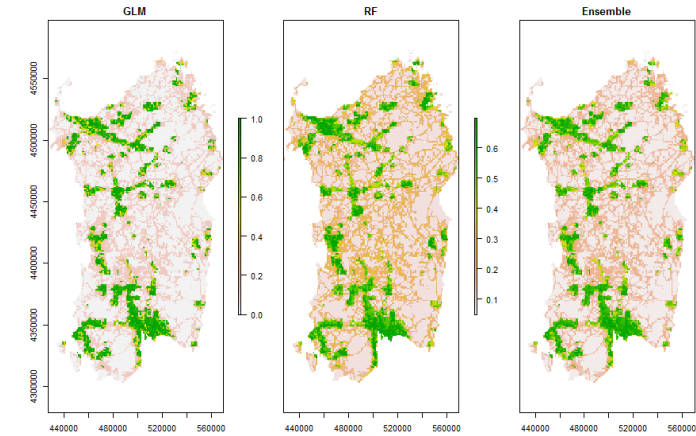
Biarum dispar

GLM	
AUC	TSS
0.950	0.933
RF	
AUC	TSS
1	1



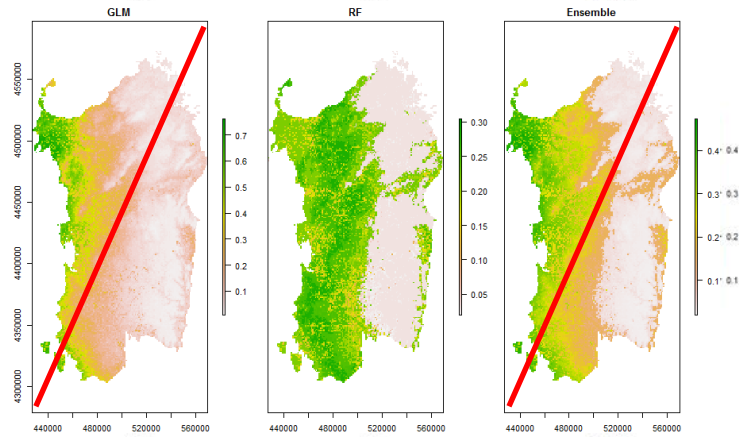
Borago morisiana

GLM
AUC **TSS**
0.750 0.750
RF
AUC **TSS**
0.875 0.875



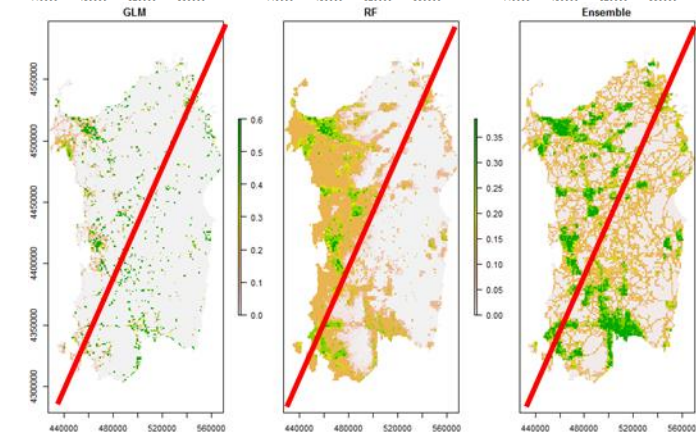
Borago pygmaea

GLM
AUC **TSS**
0.917 0.917
RF
AUC **TSS**
0.755 0.708



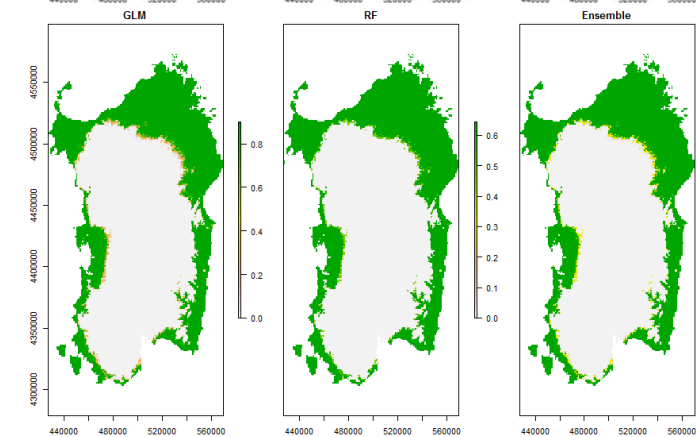
Carex panormitana

GLM
AUC **TSS**
0.333 0.083
RF
AUC **TSS**
0.234 0.145



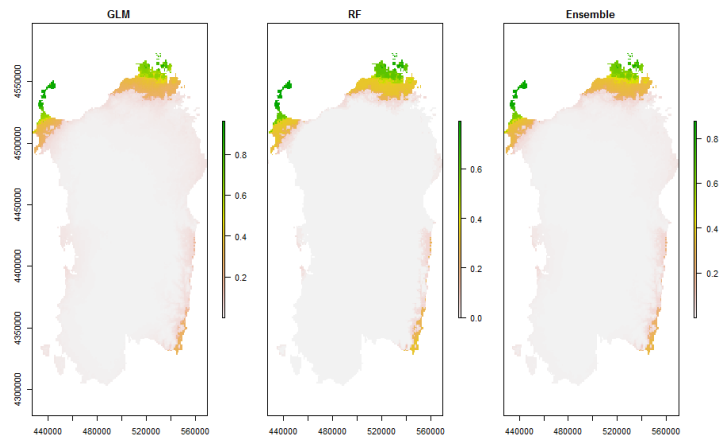
Carlina
macrocephala
subsp.
macrocephala

GLM
AUC **TSS**
0.875 0.851
RF
AUC **TSS**
1 1



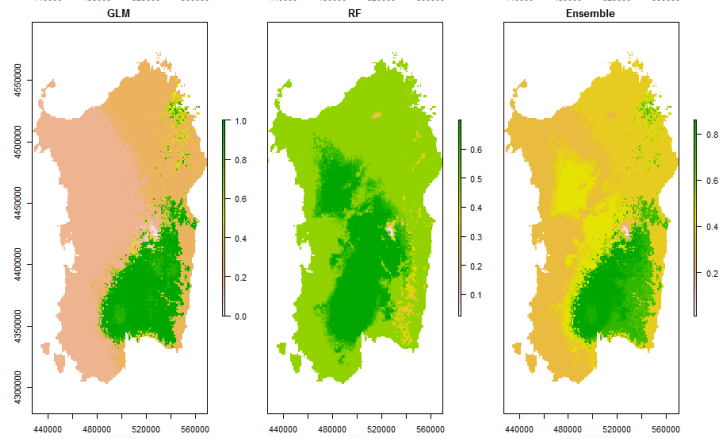
Euphorbia pterococca

GLM
AUC **TSS**
 0.957 0.934
RF
AUC **TSS**
 0.958 0.944



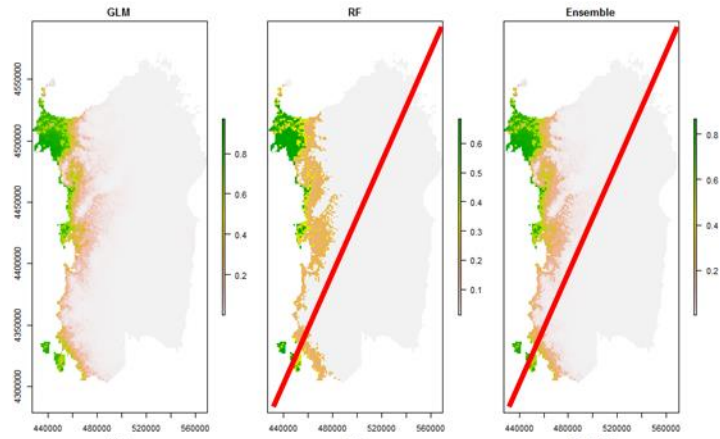
Euphrasia nana

GLM
AUC **TSS**
 0,95 0,95
RF
AUC **TSS**
 0.955 0.946



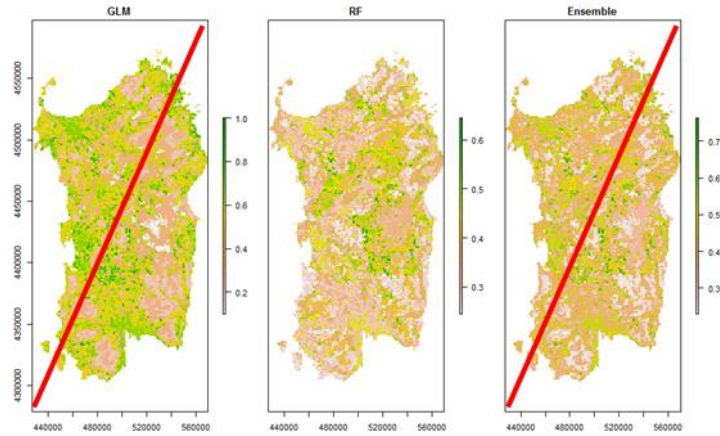
Genista aetnensis

GLM
AUC **TSS**
 1 1
RF
AUC **TSS**
 0.575 0.450



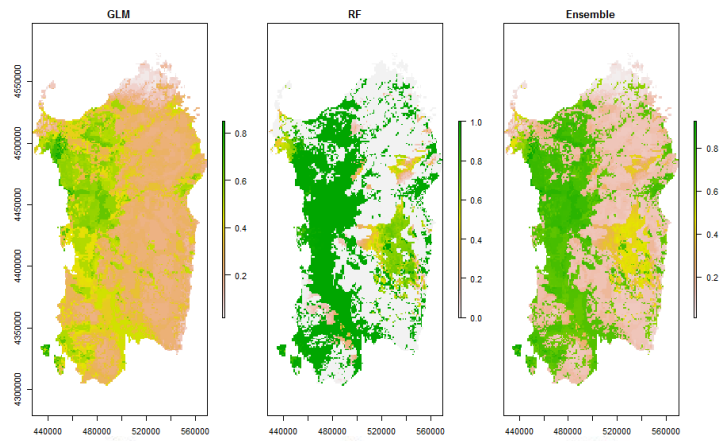
Genista toluensis

GLM
AUC **TSS**
 0.500 0.500
RF
AUC **TSS**
 1 1



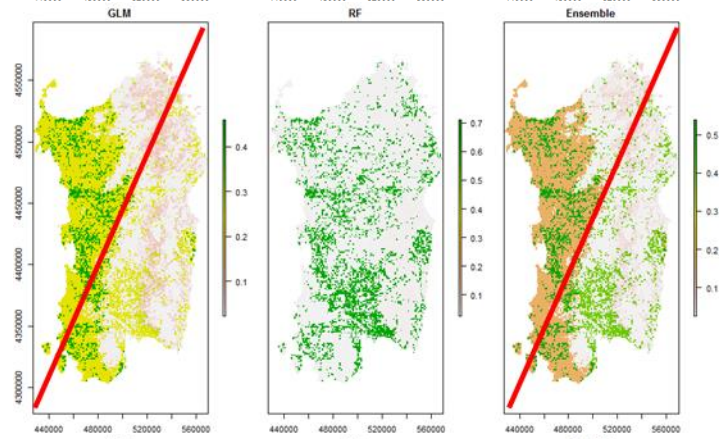
Helicodicerus muscivorus

GLM		
AUC	TSS	
1	1	
RF		
AUC	TSS	
1	1	



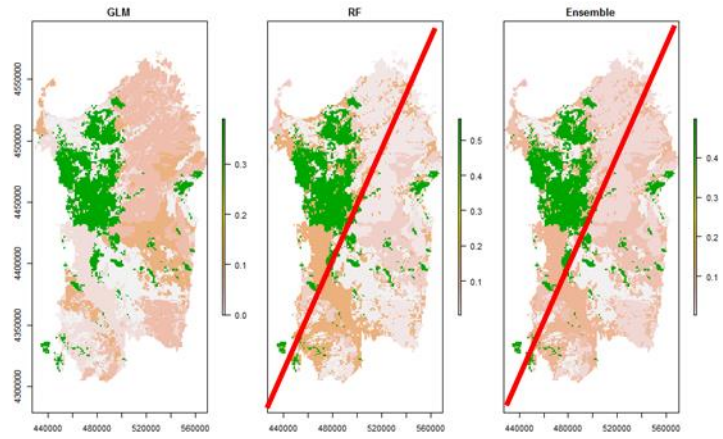
Hypericum scruglii

GLM		
AUC	TSS	
0.371	0.214	
RF		
AUC	TSS	
0.778	0.778	



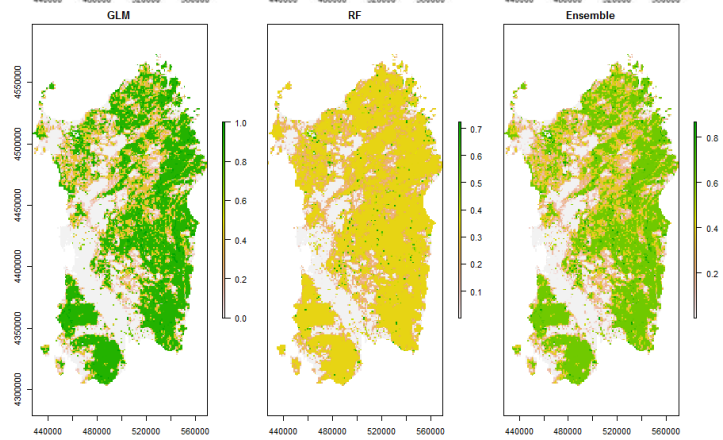
Iberis integerrima

GLM		
AUC	TSS	
0.917	0.857	
RF		
AUC	TSS	
0.531	0.500	



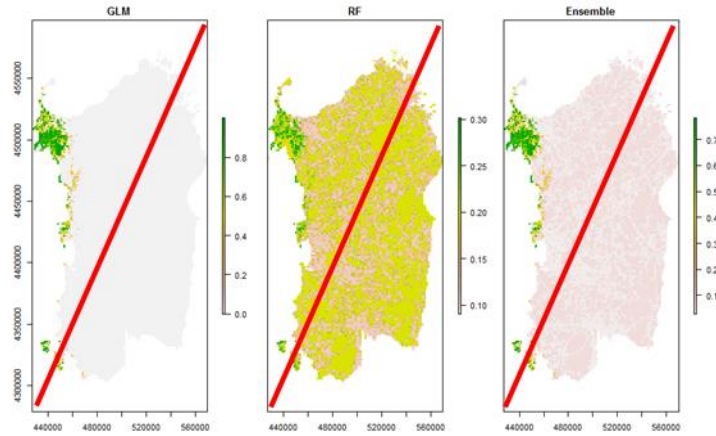
Lavatera triloba
subsp. *triloba*

GLM		
AUC	TSS	
1	1	
RF		
AUC	TSS	
0.917	0.917	



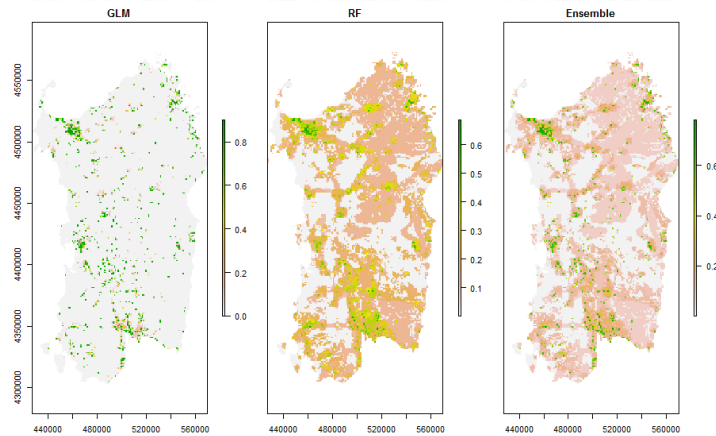
Limonium insulare

GLM	
AUC	TSS
0.556	0.556
RF	
AUC	TSS
0,250	-0.166



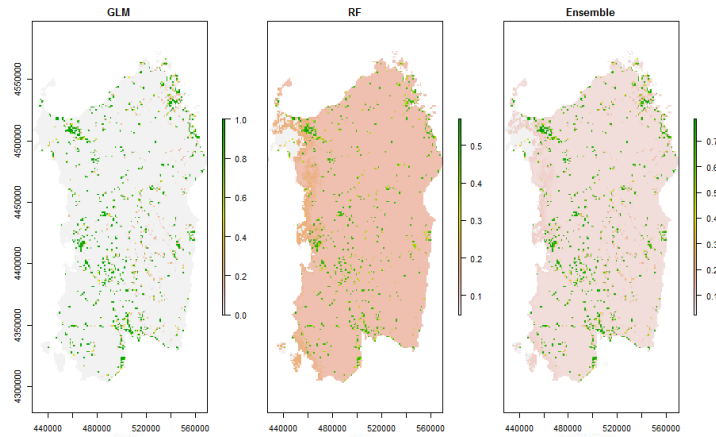
Limonium laetum

GLM	
AUC	TSS
0.800	0.700
RF	
AUC	TSS
1	1



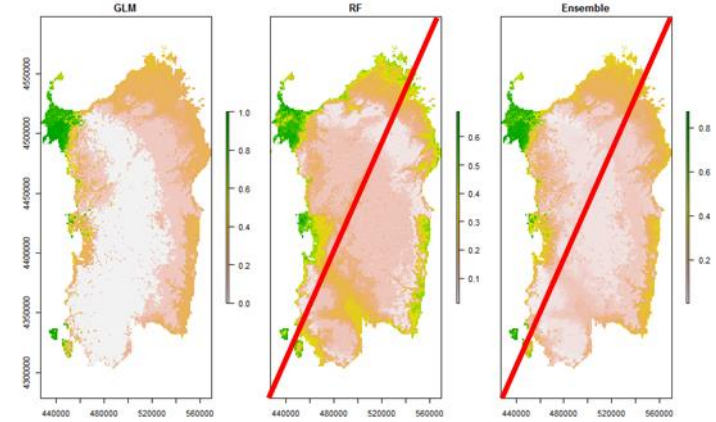
Linaria flava

GLM	
AUC	TSS
0.833	0.750
RF	
AUC	TSS
1	1



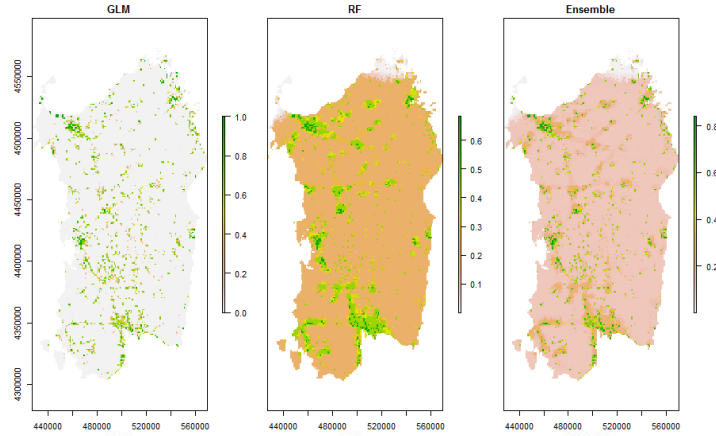
Lysimachia monelli

GLM	
AUC	TSS
0.857	0.857
RF	
AUC	TSS
0.604	0.469



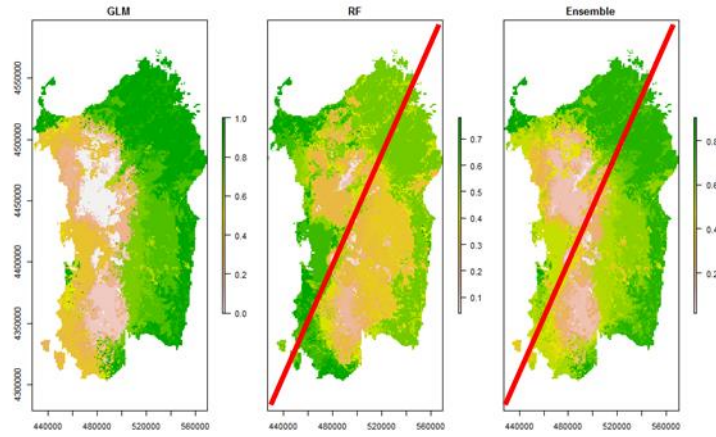
Oenanthe lisa

GLM	
AUC	TSS
1	1
RF	
AUC	TSS
1	1



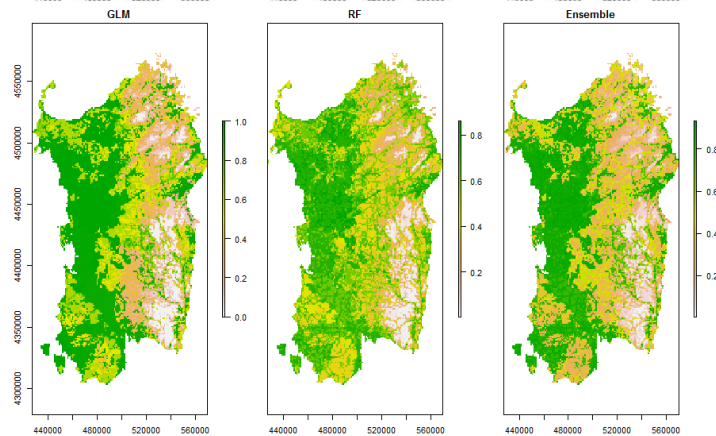
Pilularia minuta

GLM	
AUC	TSS
0.778	0.694
RF	
AUC	TSS
0.595	0.476



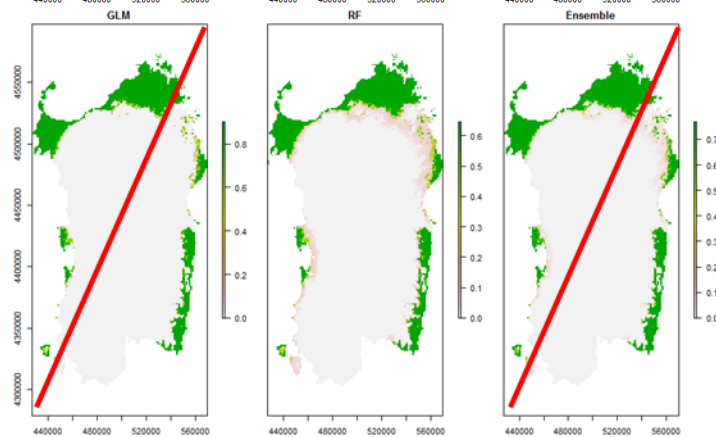
Ribes multiflorum
subsp.
sandalioticum

GLM	
AUC	TSS
0.833	0.750
RF	
AUC	TSS
1	1



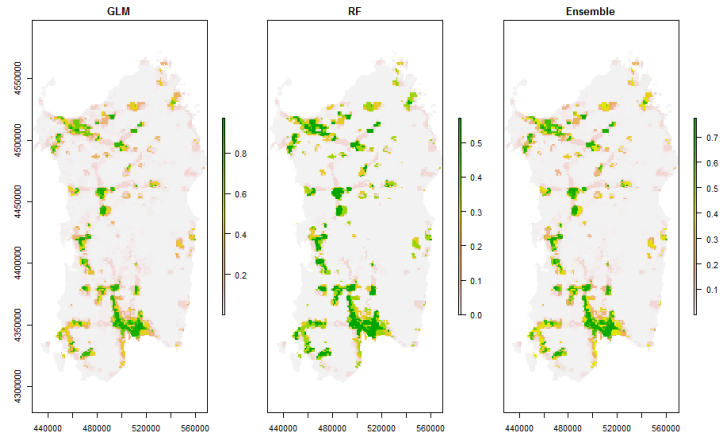
Santolina insularis

GLM	
AUC	TSS
0.677	0.640
RF	
AUC	TSS
1	1



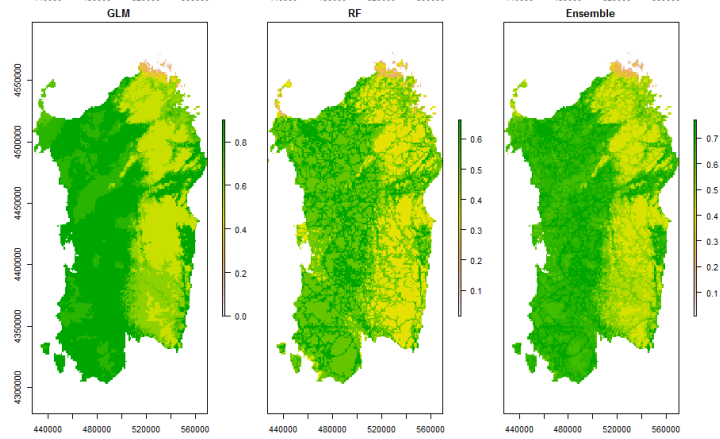
Silene beguinotii

GLM
AUC **TSS**
0.924 0.890
RF
AUC **TSS**
0.905 0.844



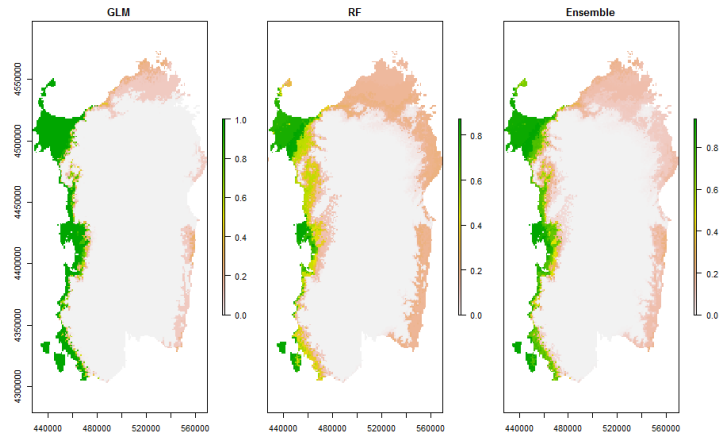
Silene velutina

GLM
AUC **TSS**
0.833 0.750
RF
AUC **TSS**
1 1



Stachys corsica

GLM
AUC **TSS**
0.997 0.994
RF
AUC **TSS**
1 1



Viola corsica subsp. *limbarae*

GLM
AUC **TSS**
0.8 0.78
RF
AUC **TSS**
0.994 0.988

