

Supplementary Material

Figure S1.- Recipient areas (in green) corresponding to the year 2050; i.e. areas that, in the future, will harbour the climatic conditions currently represented by the Iberian National Parks (black polygons) for at least two parks.

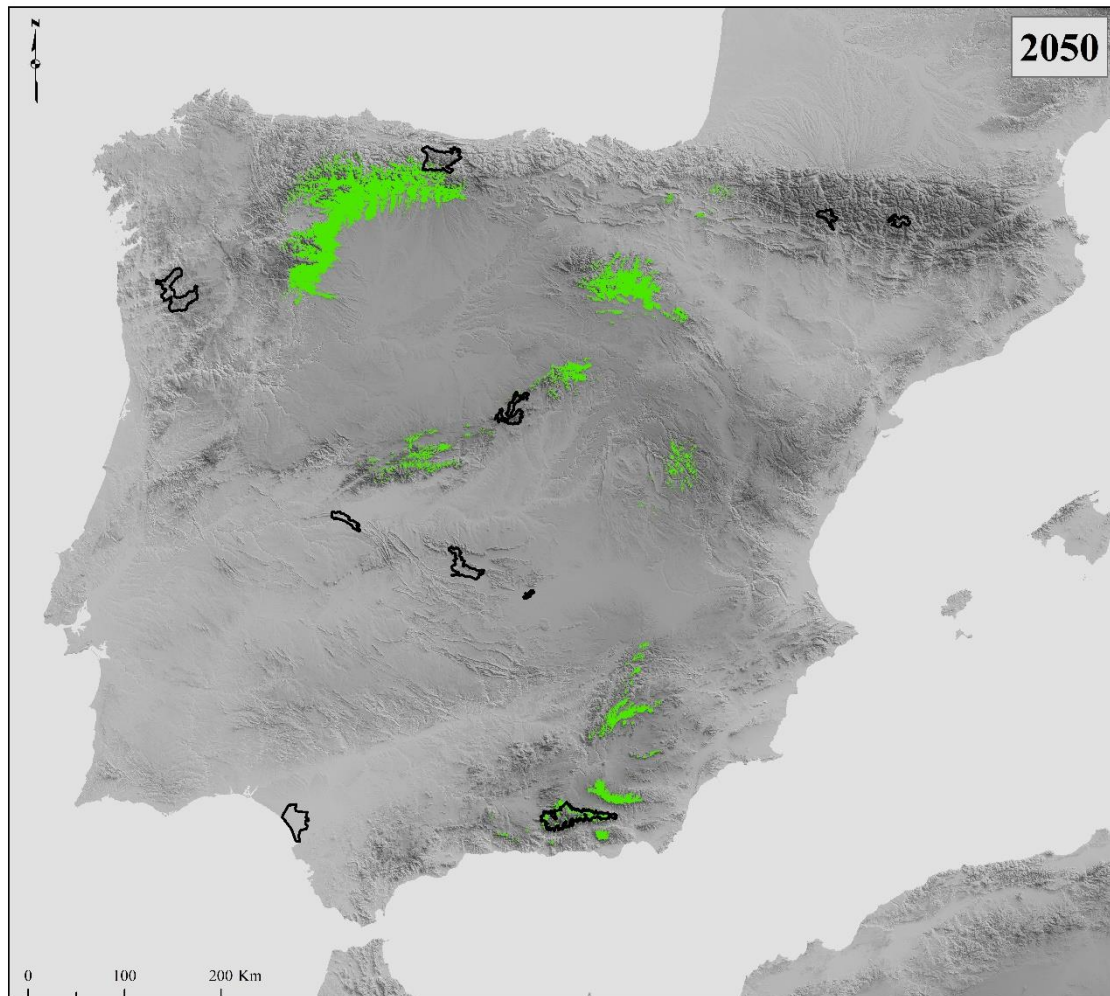


Figure S2.- Recipient areas (in green) corresponding to the year 2070; i.e. areas that, in the future, will harbour the climatic conditions currently represented by the Iberian National Parks (black polygons) for at least two parks.

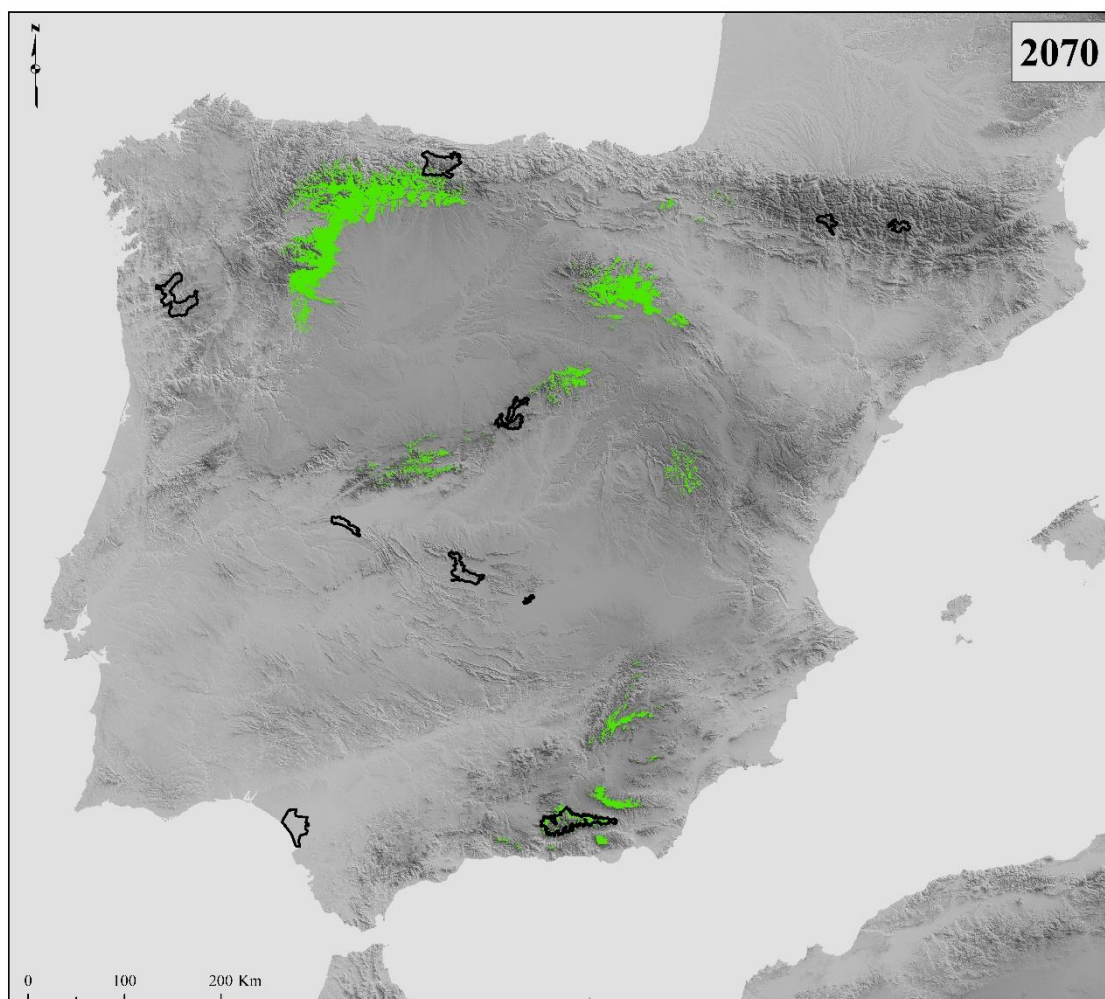


Figure S3.- Recipient areas (in green) corresponding to the RCP 4.5 scenario; i.e. areas that, in the future, will harbour the climatic conditions currently represented by the Iberian National Parks (black polygons) for at least two parks.

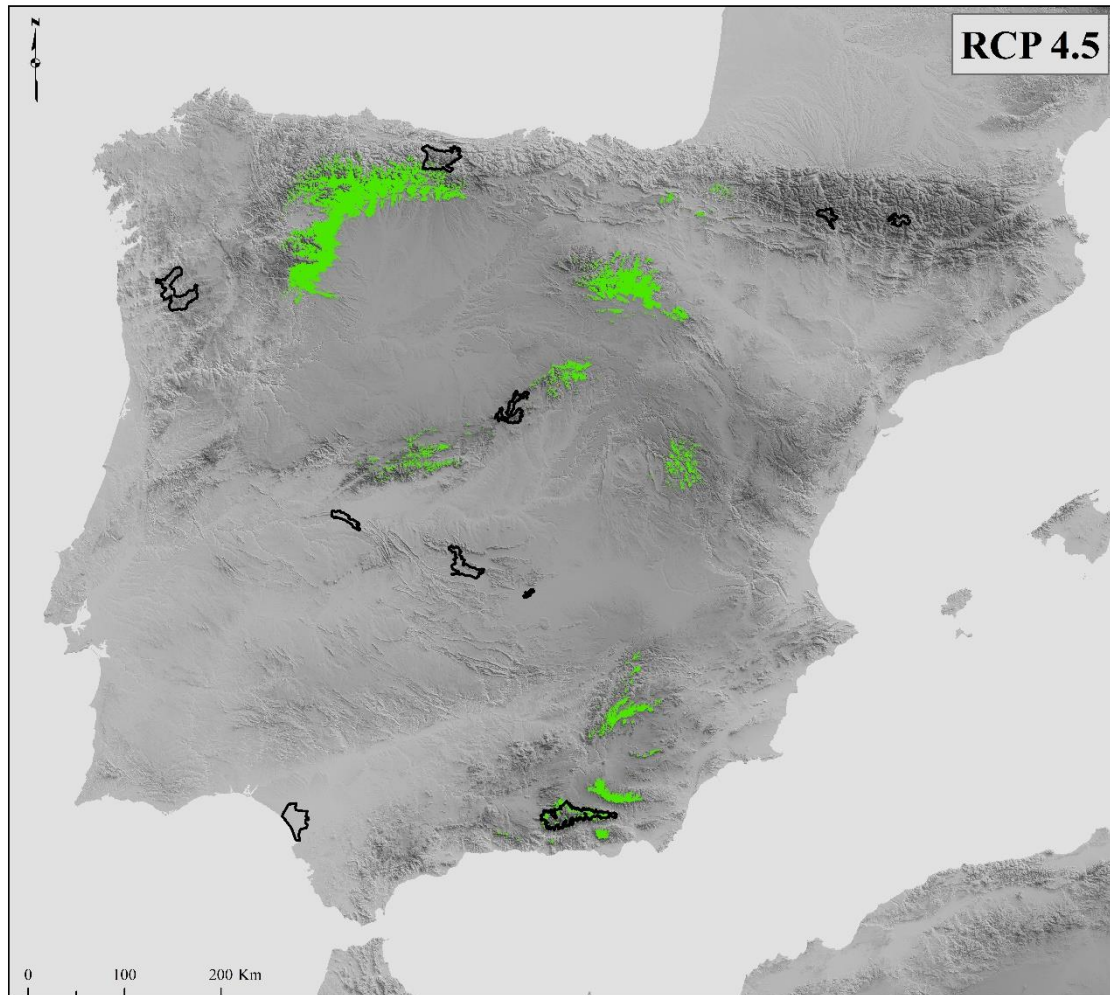


Figure S4.- Recipient areas (in green) corresponding to the RCP 8.5 scenario; i.e. areas that, in the future, will harbour the climatic conditions currently represented by the Iberian National Parks (black polygons) for at least two parks.

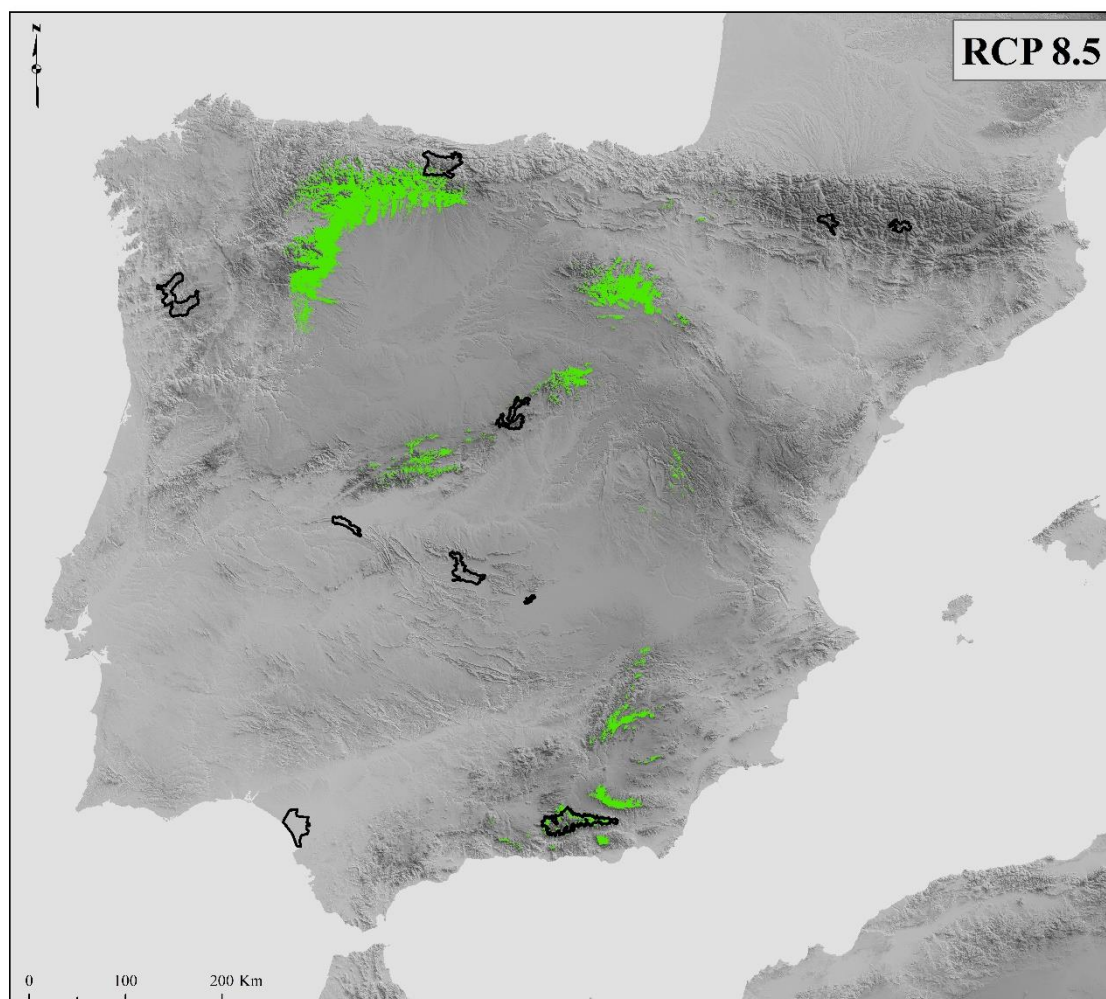


Figure S5.- Network of corridors connecting climatically representative areas during the 2050 scenario. The green (low) – orange (high) colour gradient indicates cost-weighted distance values. Green colour pathways show those corridors with lower cost-weighted distance values. Iberian National Parks are represented by black polygons.

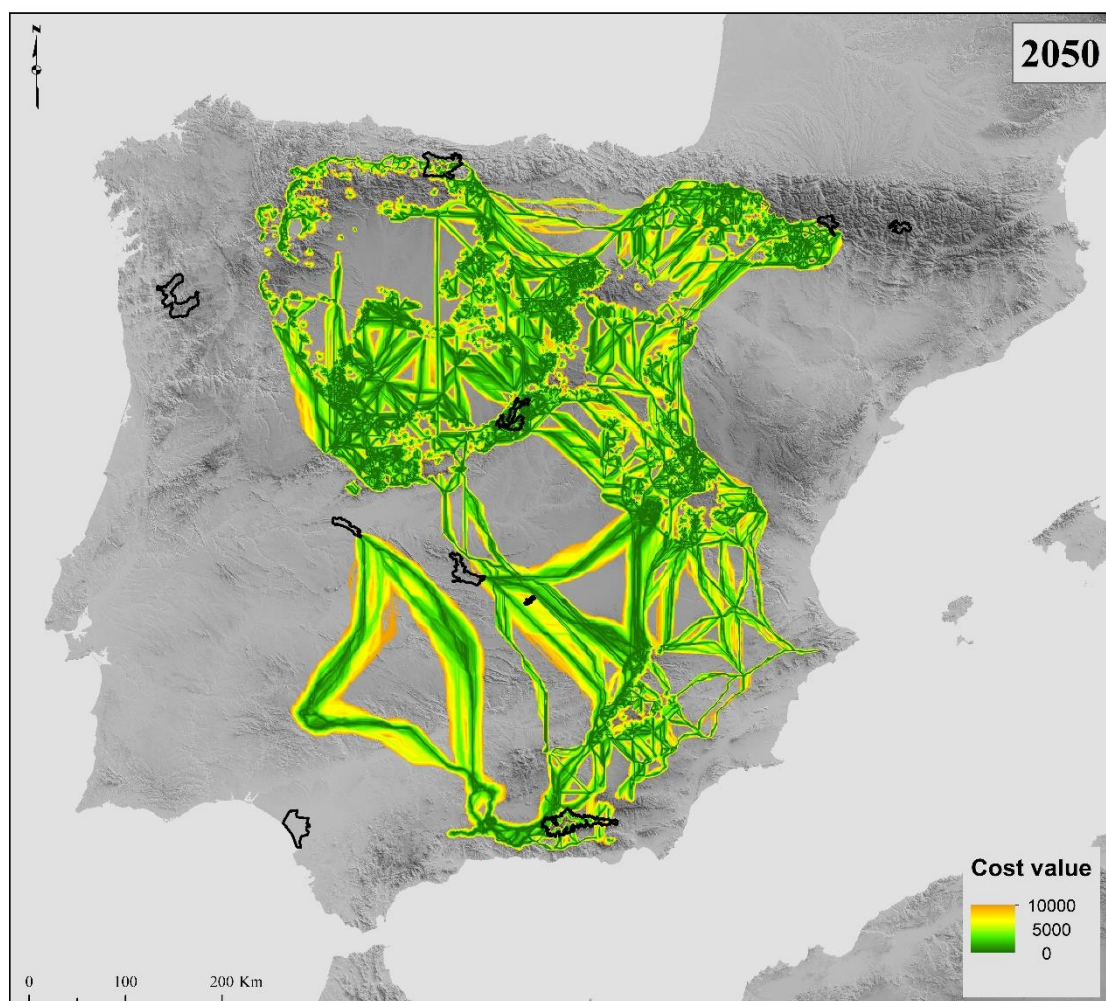


Figure S6.- Network of corridors connecting climatically representative areas during the 2070 scenario. The green (low) – orange (high) colour gradient indicates cost-weighted distance values. Green colour pathways show those corridors with lower cost-weighted distance values. Iberian National Parks are represented by black polygons.

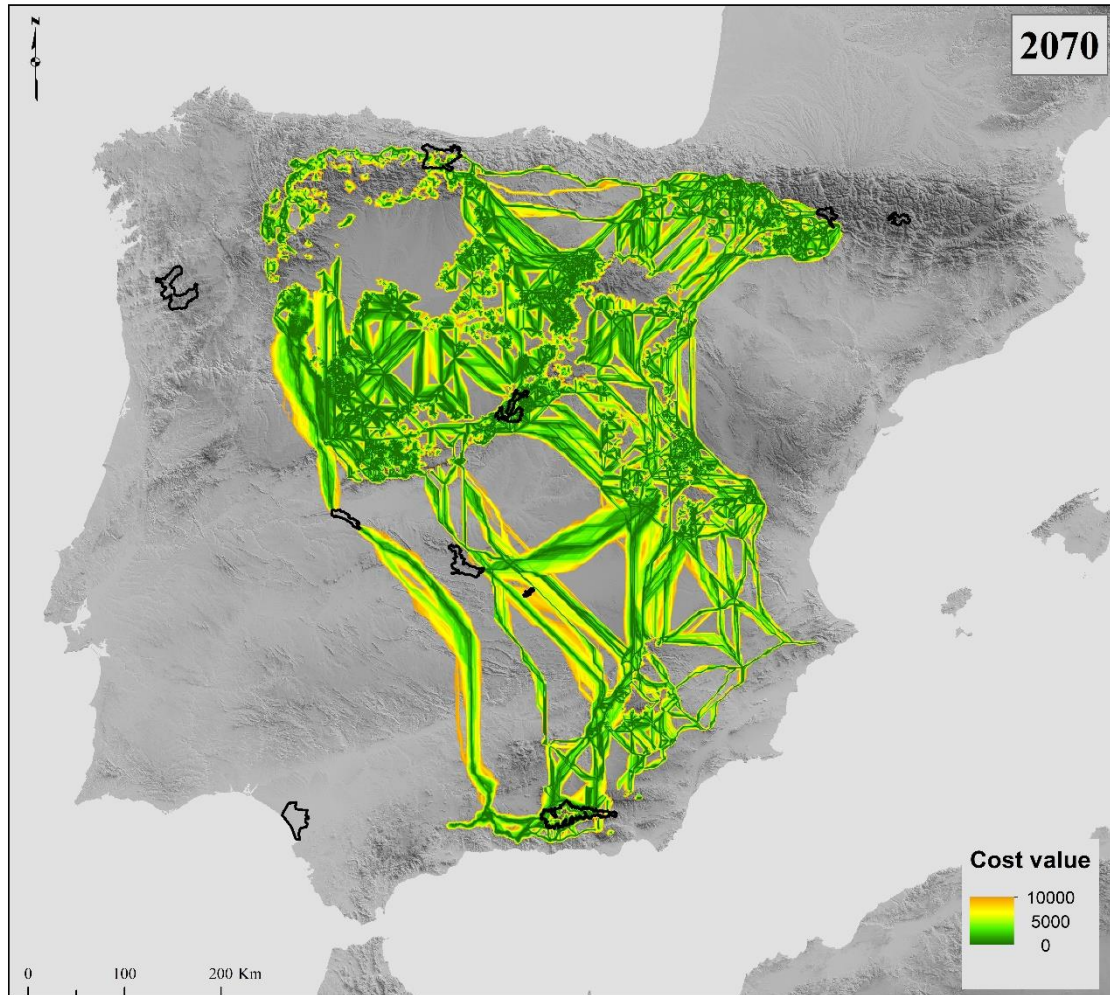


Figure S7.- Network of corridors connecting climatically representative areas for the RCP 4.5 scenario. The green (low) – orange (high) colour gradient indicates cost-weighted distance values. Green colour pathways show those corridors with lower cost-weighted distance values. Iberian National Parks are represented by black polygons.

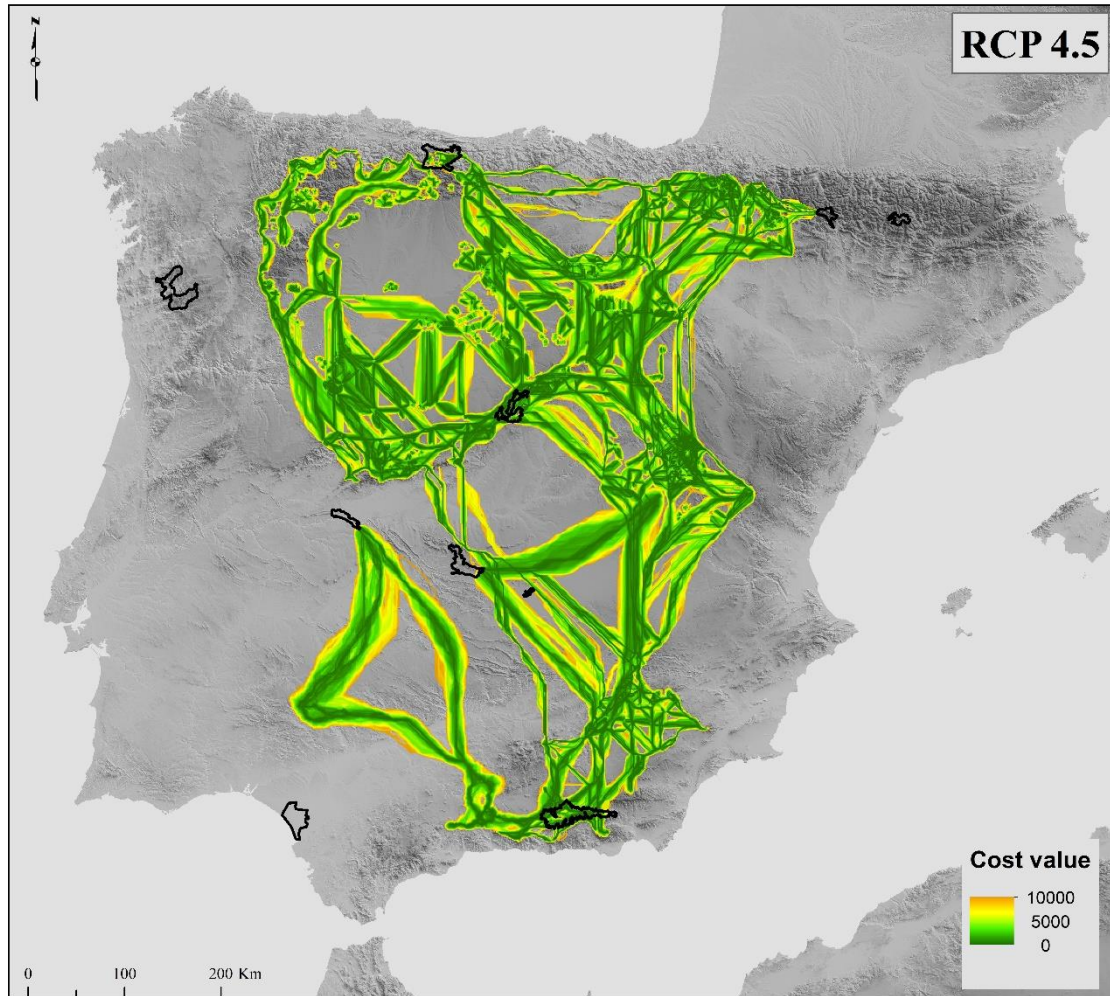


Figure S8.- Network of corridors connecting climatically representative areas for the RCP 8.5 scenario. The green (low) – orange (high) colour gradient indicates cost-weighted distance values. Green colour pathways show those corridors with lower cost-weighted distance values. Iberian National Parks are represented by black polygons.

