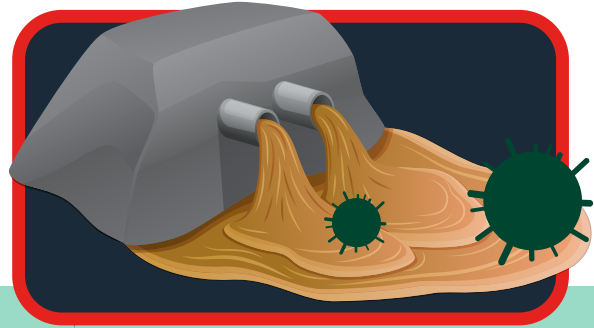


# POLIO IS SPREADING IN ROCKLAND COUNTY

✓ A young adult with Polio paralysis was confirmed on July 21st

✓ As of August 4th it's confirmed, Polio is spreading in Rockland County wastewater.



## Where are the cases?

It is difficult to fear something we cannot see.

- Approximately 75% of people who are infected with Polio will not experience any symptoms and will not know they are contagious.
- For every 1 case with symptoms of paralysis likely hundreds or thousands of people have been infected with the disease.

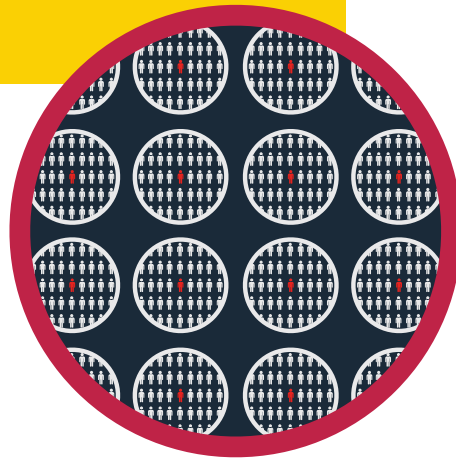
## What is Polio?

Polio is a disease caused by the Poliovirus that can infect the spinal cord and cause permanent paralysis or even death. **Polio is preventable, only with immunization.**

**There is no cure for Polio.**

## Our new generation is in danger!

There are now over **11,000 infants** under the age of 2 in Rockland County who are **at risk**, because they are not fully immunized.



## Who is at risk:

Newborn babies.

Children under 2 who have not completed their Polio immunization schedule.

Anyone not fully immunized - including children, adults and pregnant women

Immunocompromised individuals.

Speak to your doctor if the Polio booster is right for you.

## The Polio immunization is proven highly effective

**1950s**

Polio outbreaks cause more than 15,000 cases of paralysis each year in the U.S.

**1955**

The Polio immunization developed by Dr. Jonas Salk is licensed

**1960s**

Less than 100 cases of paralysis per year are reported in the United States

**1970s**

Less than 10 cases of paralysis per year are reported in the United States

**1979**

Last natural case of Polio occurs in the U.S.

## Polio spreads through:

Contact with the fecal matter of an infected person.



Contact with a contaminated body of water.



Droplets of water via a sneeze or cough from an infected person.



**The only protection is Immunization**

Speak to your doctor about your Immunization status

## Symptoms can take up to 30 days to appear after infection:

Approximately 25% will experience flu-like symptoms, such as:

- Sore throat
- Fever
- Headache
- Nausea
- Fatigue
- Stomach pain

A small amount of people will experience the most severe symptoms of polio such as:

- Meningitis
- Severe muscle pains
- Stiffness in the neck & back
- Paralysis or even death