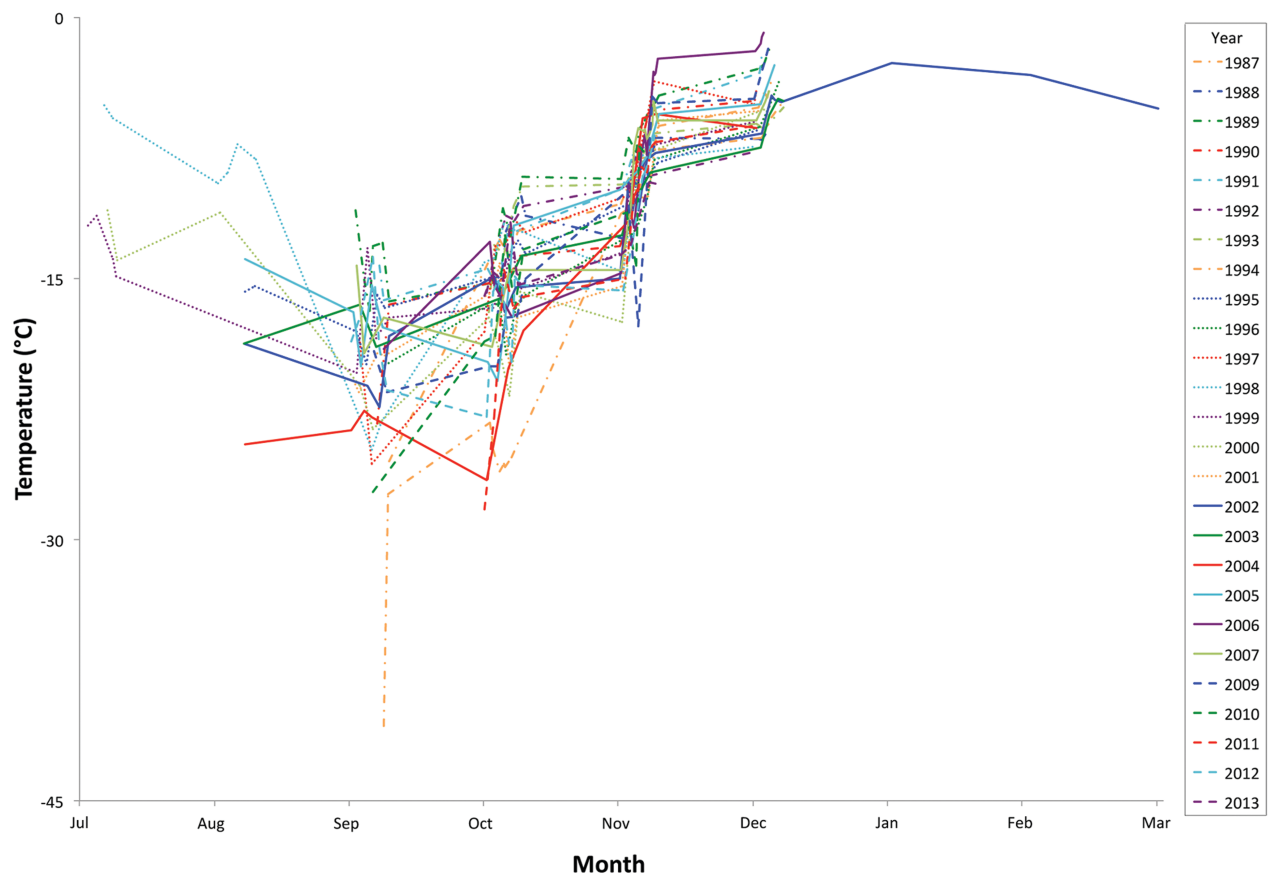


**Figure S1.** Median fast ice thickness measured at the sea ice runway near McMurdo Station from 1986 to 2013. The number of measurements varied between different years from 1 to 20, and were taken within an area of approximately 0.28 km<sup>2</sup>.



**Figure S2.** Median fast ice temperature measured at the sea ice runway near McMurdo Station from 1986 to 2013. The number of measurements varied between different years from 1 to 20, and were taken within an area of approximately 0.28 km<sup>2</sup>.