

ASPA No 125 - Fildes Peninsula Zones 125a - 125h

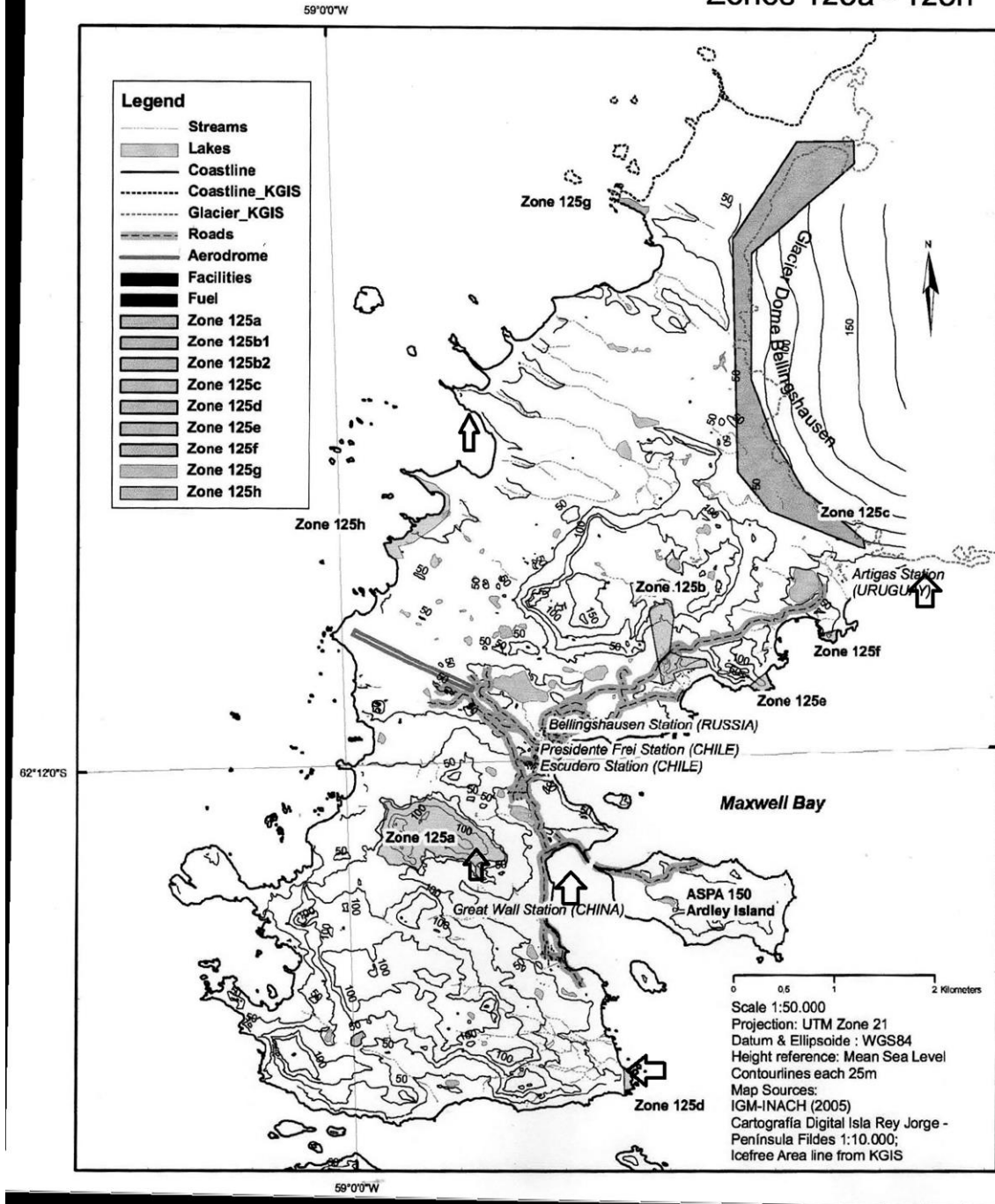


Fig. S1. King George Island with the sampling sites marked. Zone Aspa 125c (Collins Glacier), Zone Aspa 125a (Fossil Hill), Zone Aspa 125d (Half Three Point), and Fossil Hill.

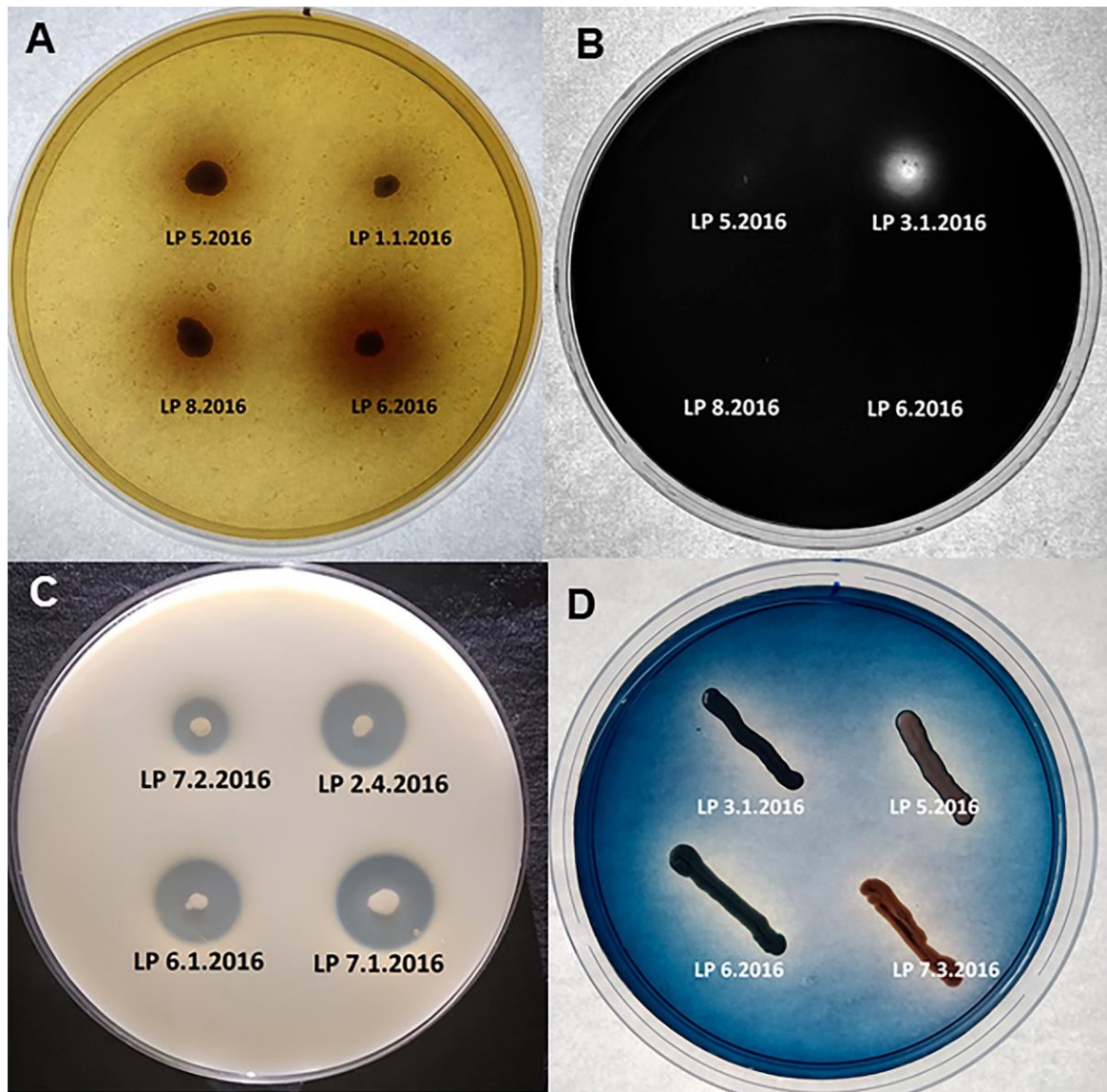


Fig. S2. Representative plate assays carried out in this study containing (Panel A) Esculin for the β -glucosidase assay, (Panel B) soluble starch for the amylase assay, (Panel C) skim milk for the protease assay, and Panel D Reactive Black 5 (100 ppm) for the decolourisation assay. The four yeasts whose isolates are indicated were tested on each assay plate.

Supplementary Table I. Information of samples collected in King George Island, Antarctica.

Sample No.	Location	Sample kind	Strains
1	Half Three Point (Aspa* 125d)	Penguin guano	LP 1.1.2016, LP 1.2.2016
2	Fossil Hill (Aspa 125a)	Bird feathers	LP 2.1.2016, LP 2.2.2016, LP 2.4.2016, LP 2.5.2016, LP 2.7.2016, LP 2.8.2016
3	Collins Glacier (Aspa 125c)	Bird feathers and moss	LP 3.1.2016, LP 3.2.2016, LP3.4.2016, LP 3.5.2016, LP 3.6.2016
4	Fossil Hill	Pink moss and lichens	LP 4.2.2016
5	Half Three Point (Aspa 125d)	Soil	-
6	Half Three Point (Aspa 125d)	Ground on rocks	LP 6.1.2016, LP 6.2.2016, LP 6.4.2016
7	Half Three Point (Aspa 125d)	Ground on rocks	LP 7.1.2016, LP 7.2.2016, LP 7.3.2016, LP 7.4.2016
8	Collins Glacier (Aspa 125c)	Lichens	LP 8.1.2016, LP 8.2.2016

9	Fossil Hill (Aspa 125a)	Moss	-
10	Drake Bay (Aspa 125g)	Sediments	-
11	Fossil Hill (Aspa 125a)	Penguin guano	LP 11.12016
12	Collins Glacier (Aspa 125c)	Sea water	LP 1.2016, LP 2.2016, LP 3.2016, LP 5.2016, LP 7.2016, LP 8.2016, LP 9.2016
13	Fossil Hill (Aspa 125a)	Soil	-

*Aspa, Antarctic Specialty Protected Zone; for those locations, *cf.* Fig. S1