

## Appendix

*Table A1. Number of observations by country and year – Baseline model: participation in a demonstration*

	<b>2006</b>	<b>2008</b>	<b>2010</b>	<b>2012</b>	<b>2014</b>	<b>Total</b>
Austria	1,220	.	.	.	1,221	2,441
Belgium	1,509	1,487	1,405	1,646	1,544	7,591
Bulgaria	753	0	1,552	1,518	.	3,823
Croatia	.	811	925	.	.	1,736
Cyprus	718	.	591	677	.	1,986
Czech Republic	.	1,302	1,537	1,226	1,382	5,447
Denmark	1,267	1,344	1,302	1,350	1,268	6,531
Estonia	.	1,106	1,262	1,586	.	3,954
Finland	1,649	1,916	1,644	1,963	1,857	9,029
France	1,650	1,773	1,505	1,689	1,689	8,306
Germany	1,994	2,126	2,239	2,423	2,612	11,394
Greece	.	1,019	1,372	.	.	2,391
Hungary	.	923	1,062	1,160	1,023	4,168
Ireland	1,043	1,425	1,513	1,674	1,532	7,187
Italy	.	.	.	492	.	492
Latvia	.	1,332	.	.	.	1,332
Lithuania	.	.	872	1,185	1,268	3,325
Netherlands	1,577	1,512	1,406	1,516	1,611	7,622
Poland	1,151	1,111	1,142	1,263	984	5,651
Portugal	919	703	.	739	942	3,303
Romania	.	1,141	.	.	.	1,141
Slovakia	917	.	1,052	1,108	.	3,077
Slovenia	860	814	762	688	775	3,899
Spain	1,023	1,357	1,332	1,453	1,325	6,490
Sweden	1,683	1,655	1,333	1,589	1,562	7,822
United Kingdom	1,667	1,804	1,595	1,498	1,683	8,247
<b>Total</b>	<b>21,600</b>	<b>26,661</b>	<b>27,403</b>	<b>28,443</b>	<b>24,278</b>	<b>128,385</b>

Table A2. Multilevel linear probability models on the likelihood of having participated in a demonstration in the last 12 months in 25 countries, 2006-2014

	Model 1	Model 2	Model 3	Model 4	Model 5	Model 6
<b>Ideology</b>						
<i>Extreme-left</i>	0.095*** (0.003)	0.062*** (0.007)	0.095*** (0.003)	0.095*** (0.003)	0.095*** (0.003)	0.095*** (0.003)
<i>Left</i>	0.040*** (0.002)	0.021*** (0.006)	0.040*** (0.002)	0.041*** (0.002)	0.041*** (0.002)	0.041*** (0.002)
<i>Centre</i>	0.012*** (0.002)	0.020*** (0.006)	0.012*** (0.002)	0.012*** (0.002)	0.012*** (0.002)	0.012*** (0.002)
<i>Right</i>	0.002 (0.002)	0.009 (0.006)	0.002 (0.002)	0.002 (0.002)	0.002 (0.002)	0.002 (0.002)
<i>Extreme-right</i>	[REF.]	[REF.]	[REF.]	[REF.]	[REF.]	[REF.]
Male	0.001 (0.001)	0.001 (0.001)	-0.003 (0.003)	0.001 (0.001)	0.001 (0.001)	0.002 (0.001)
<b>Age</b>						
<i>Under 30</i>	0.068*** (0.002)	0.068*** (0.002)	0.068*** (0.002)	0.047*** (0.006)	0.068*** (0.002)	0.067*** (0.002)
<i>From 30 to 44</i>	0.036*** (0.002)	0.036*** (0.002)	0.036*** (0.002)	0.007 (0.005)	0.036*** (0.002)	0.036*** (0.002)
<i>From 45 to 64</i>	0.031*** (0.002)	0.032*** (0.002)	0.031*** (0.002)	0.002 (0.005)	0.032*** (0.002)	0.031*** (0.002)
<i>65 and over</i>	[REF.]	[REF.]	[REF.]	[REF.]	[REF.]	[REF.]
<b>Income</b>						
<i>Low income</i>	[REF.]	[REF.]	[REF.]	[REF.]	[REF.]	[REF.]
<i>Medium income</i>	0.005** (0.002)	0.004* (0.002)	0.005** (0.002)	0.004* (0.002)	-0.009* (0.004)	0.003+ (0.002)
<i>High income</i>	0.007*** (0.002)	0.007** (0.002)	0.007*** (0.002)	0.007*** (0.002)	-0.032*** (0.005)	0.006** (0.002)
High education	0.018*** (0.002)	0.018*** (0.002)	0.018*** (0.002)	0.017*** (0.002)	0.017*** (0.002)	-0.033*** (0.004)
Political Interest	0.034*** (0.001)	0.034*** (0.001)	0.034*** (0.001)	0.034*** (0.001)	0.034*** (0.001)	0.034*** (0.001)
Closeness Party	0.019*** (0.002)	0.019*** (0.002)	0.019*** (0.002)	0.019*** (0.002)	0.019*** (0.002)	0.020*** (0.002)
Unemployment	0.003*** (0.000)	0.002*** (0.001)	0.002*** (0.000)	0.000 (0.000)	0.001* (0.000)	-0.001* (0.000)
<b>Ideology*Unemploy.</b>						
<i>Extreme Left</i>		0.004*** (0.001)				
<i>Left</i>		0.002*** (0.001)				
<i>Centre</i>		-0.001 (0.001)				
<i>Right</i>		-0.001 (0.001)				
<b>Male*Unemployment</b>						
			0.000 (0.000)			
<b>Age*Unemployment</b>						
<i>Under 30</i>				0.002***		

					(0.001)	
	<i>From 30 to 44</i>				0.003***	
					(0.001)	
	<i>From 45 to 64</i>				0.003***	
					(0.000)	
<hr/>						
	Income*Unemploy.					
	<i>Medium income</i>				0.001**	
					(0.000)	
	<i>High income</i>				0.004***	
					(0.000)	
<hr/>						
	High edu.*Unemploy.					0.006***
						(0.000)
<hr/>						
Constant	-0.123***	-0.119***	-0.122***	-0.101***	-0.107***	-0.092***
	(0.011)	(0.011)	(0.011)	(0.011)	(0.011)	(0.011)
lns1_1_1	-3.016***	-3.022***	-3.017***	-3.020***	-3.018***	-2.991***
	(0.141)	(0.141)	(0.141)	(0.141)	(0.141)	(0.141)
lnsig_e	-1.407***	-1.407***	-1.407***	-1.407***	-1.407***	-1.408***
	(0.002)	(0.002)	(0.002)	(0.002)	(0.002)	(0.002)
Observations	128,385	128,385	128,385	128,385	128,385	128,385

Standard errors in parentheses

+ p<0.1, \* p<0.05, \*\* p<0.01, \*\*\* p<0.001

Table A3. Multilevel linear probability models on the likelihood of having engaged in low-cost participation in the last 12 months in 25 countries, 2006-2014

	Model 1	Model 2	Model 3	Model 4	Model 5	Model 6
<b>Ideology</b>						
<i>Extreme-left</i>	0.100*** (0.005)	0.128*** (0.012)	0.100*** (0.005)	0.100*** (0.005)	0.100*** (0.005)	0.100*** (0.005)
<i>Left</i>	0.073*** (0.004)	0.121*** (0.011)	0.073*** (0.004)	0.073*** (0.004)	0.073*** (0.004)	0.073*** (0.004)
<i>Centre</i>	0.022*** (0.004)	0.047*** (0.010)	0.022*** (0.004)	0.022*** (0.004)	0.022*** (0.004)	0.022*** (0.004)
<i>Right</i>	0.018*** (0.004)	0.049*** (0.011)	0.018*** (0.004)	0.018*** (0.004)	0.018*** (0.004)	0.018*** (0.004)
<i>Extreme-right</i>	[REF.]	[REF.]	[REF.]	[REF.]	[REF.]	[REF.]
Male	-0.054*** (0.002)	-0.054*** (0.002)	-0.073*** (0.006)	-0.054*** (0.002)	-0.054*** (0.002)	-0.054*** (0.002)
<b>Age</b>						
<i>Under 30</i>	0.108*** (0.004)	0.108*** (0.004)	0.108*** (0.004)	0.120*** (0.010)	0.108*** (0.004)	0.108*** (0.004)
<i>From 30 to 44</i>	0.110*** (0.004)	0.110*** (0.004)	0.110*** (0.004)	0.113*** (0.009)	0.110*** (0.004)	0.110*** (0.004)
<i>From 45 to 64</i>	0.077*** (0.003)	0.077*** (0.003)	0.077*** (0.003)	0.085*** (0.008)	0.077*** (0.003)	0.077*** (0.003)
<i>65 and over</i>	[REF.]	[REF.]	[REF.]	[REF.]	[REF.]	[REF.]
<b>Income</b>						
<i>Low income</i>	[REF.]	[REF.]	[REF.]	[REF.]	[REF.]	[REF.]
<i>Medium income</i>	0.029*** (0.003)	0.029*** (0.003)	0.029*** (0.003)	0.029*** (0.003)	0.045*** (0.007)	0.029*** (0.003)
<i>High income</i>	0.067*** (0.004)	0.067*** (0.004)	0.067*** (0.004)	0.067*** (0.004)	0.080*** (0.008)	0.067*** (0.004)
High education	0.090*** (0.003)	0.090*** (0.003)	0.090*** (0.003)	0.090*** (0.003)	0.090*** (0.003)	0.099*** (0.007)
Political Interest	0.085*** (0.002)	0.085*** (0.002)	0.085*** (0.002)	0.085*** (0.002)	0.085*** (0.002)	0.085*** (0.002)
Closeness Party	0.065*** (0.003)	0.064*** (0.003)	0.064*** (0.003)	0.064*** (0.003)	0.065*** (0.003)	0.064*** (0.003)
Unemployment	0.003*** (0.001)	0.006*** (0.001)	0.002** (0.001)	0.004*** (0.001)	0.004*** (0.001)	0.004*** (0.001)
<b>Ideology*Unemploy.</b>						
<i>Extreme Left</i>		-0.003** (0.001)				
<i>Left</i>		-0.005*** (0.001)				
<i>Centre</i>		-0.003** (0.001)				
<i>Right</i>		-0.004** (0.001)				
<b>Male*Unemployment</b>						
			0.002*** (0.001)			
<b>Age*Unemployment</b>						
<i>Under 30</i>				-0.001		

					(0.001)	
					-0.000	
					(0.001)	
					-0.001	
					(0.001)	
<hr/>						
Income*Unemploy.						
<i>Medium income</i>					-0.002*	
					(0.001)	
<i>High income</i>					-0.001+	
					(0.001)	
<hr/>						
High edu.*Unemploy.						-0.001
						(0.001)
<hr/>						
Constant	-0.187***	-0.215***	-0.178***	-0.193***	-0.198***	-0.193***
	(0.028)	(0.029)	(0.028)	(0.028)	(0.028)	(0.028)
lns1_1_1	-1.994***	-1.994***	-1.995***	-1.994***	-1.995***	-1.996***
	(0.139)	(0.139)	(0.139)	(0.139)	(0.139)	(0.139)
lnsig_e	-0.854***	-0.854***	-0.854***	-0.854***	-0.854***	-0.854***
	(0.002)	(0.002)	(0.002)	(0.002)	(0.002)	(0.002)
Observations	128451	128451	128451	128451	128451	128451

Standard errors in parentheses

+ p<0.1, \* p<0.05, \*\* p<0.01, \*\*\* p<0.001

Table A4. Summary of the empirical findings for high-cost protesting

	<i>Low unemployment rate</i>		<i>High unemployment rate</i>	
	<i>Protest gap</i>	<i>Group/s less likely to protest</i>	<i>Protest gap</i>	<i>Group/s less likely to protest</i>
<i>Ideology</i>	Yes	Extreme right, right and centrists	Yes	Extreme right, right and centrists
<i>Gender</i>	No	–	No	–
<i>Age</i>	Yes	65 or more	Yes	65 or more
<i>Income</i>	No	–	Yes	Low-income individuals
<i>Education</i>	Yes	People with low education	Yes	People with low education

Table A5. Summary of the empirical findings for high-cost protesting

	<i>Good economic situation</i>		<i>Bad economic situation</i>	
	<i>Protest gap</i>	<i>Group/s less likely to protest</i>	<i>Protest gap</i>	<i>Group/s less likely to protest</i>
<i>Ideology</i>	Yes	Extreme right, right and centrists	Yes	Left
<i>Gender</i>	Yes	Men	Yes	Men
<i>Age</i>	Yes	65 or more	No	–
<i>Income</i>	Yes	Low-income individuals	Yes	Medium and high-income individuals
<i>Education</i>	Yes	People with low education	No	–

Figure A1. Likelihood of participating in a demonstration by ideology and country level of unemployment

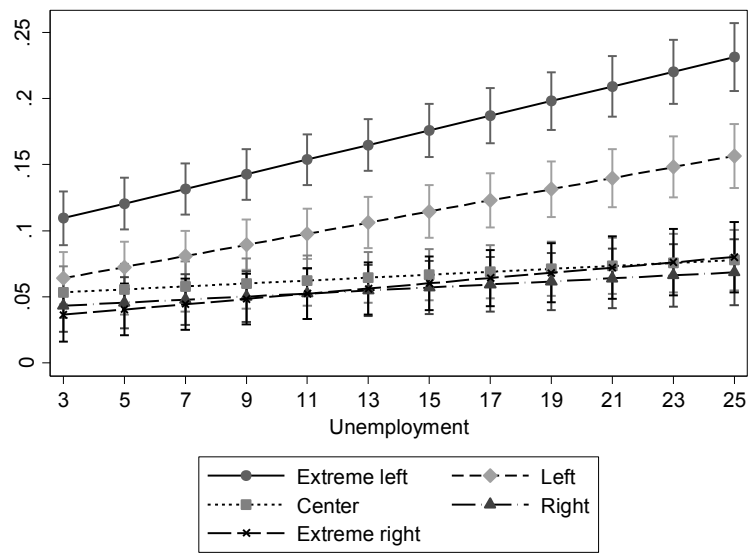


Figure A2. Likelihood of participating in a demonstration by gender and country level of unemployment

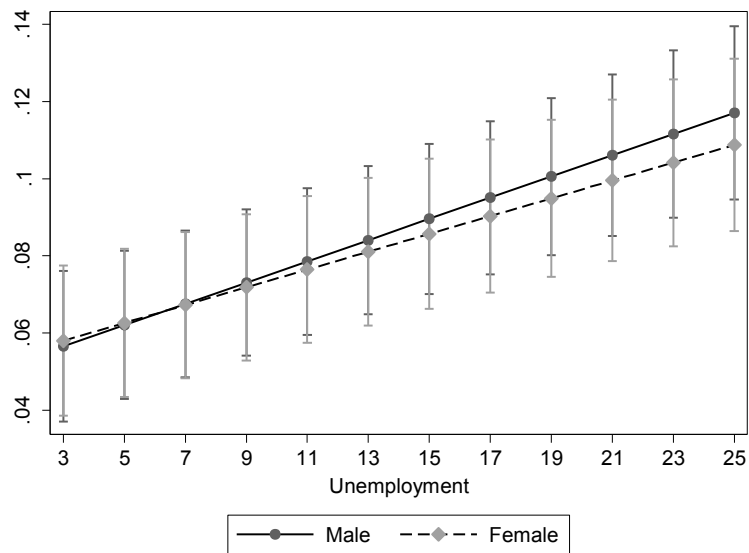




Figure A3. Likelihood of participating in a demonstration by age and country level of unemployment

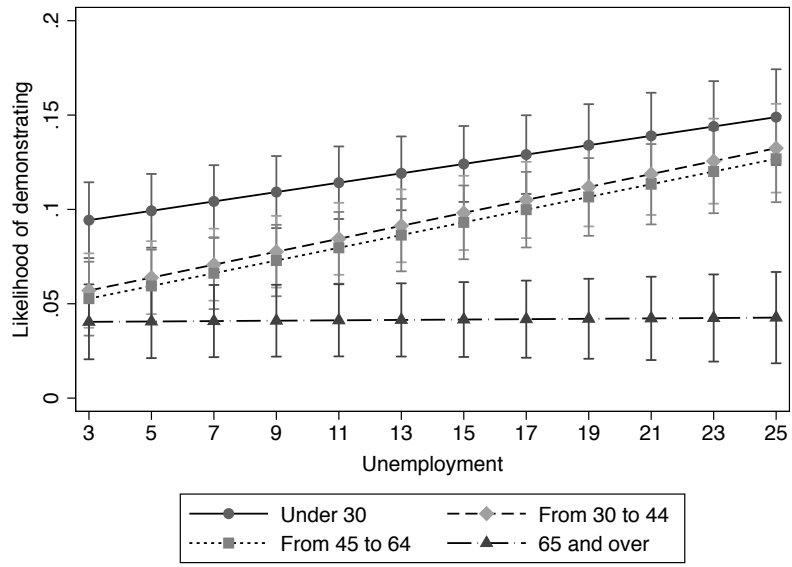


Figure A4. Likelihood of participating in a demonstration by income and country level of unemployment

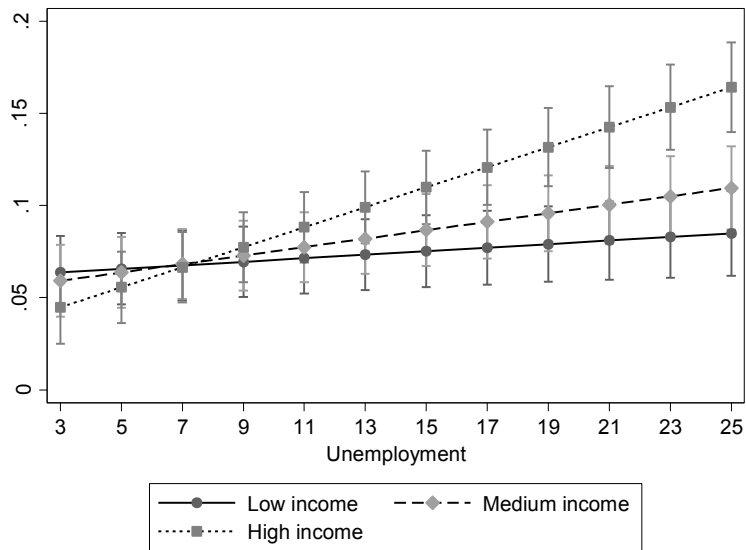


Figure A5. Likelihood of participating in a demonstration by education and country level of unemployment

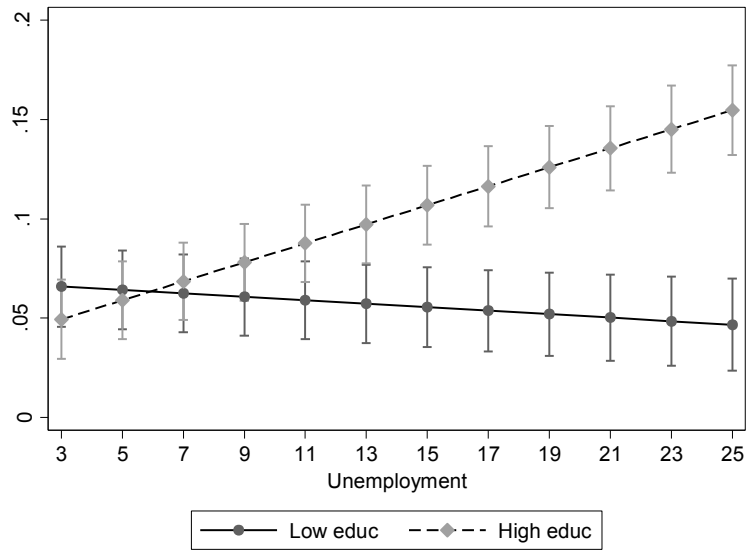


Figure A6. Likelihood of engaging in low-cost participation by ideology and country level of unemployment

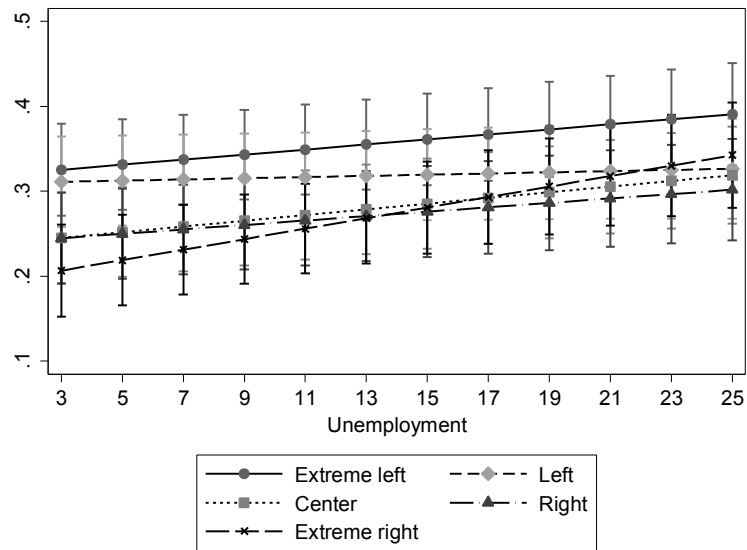


Figure A7. Likelihood of engaging in low-cost participation by gender and country level of unemployment

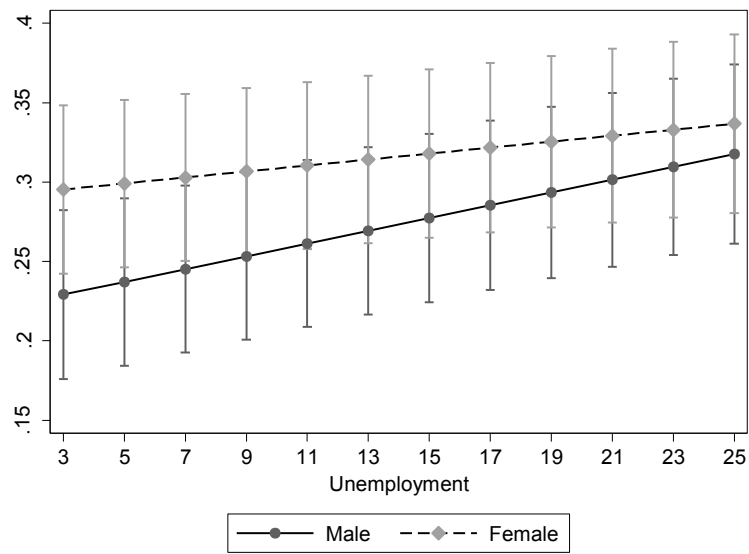


Figure A8. Likelihood of engaging in low-cost participation by age and country level of unemployment

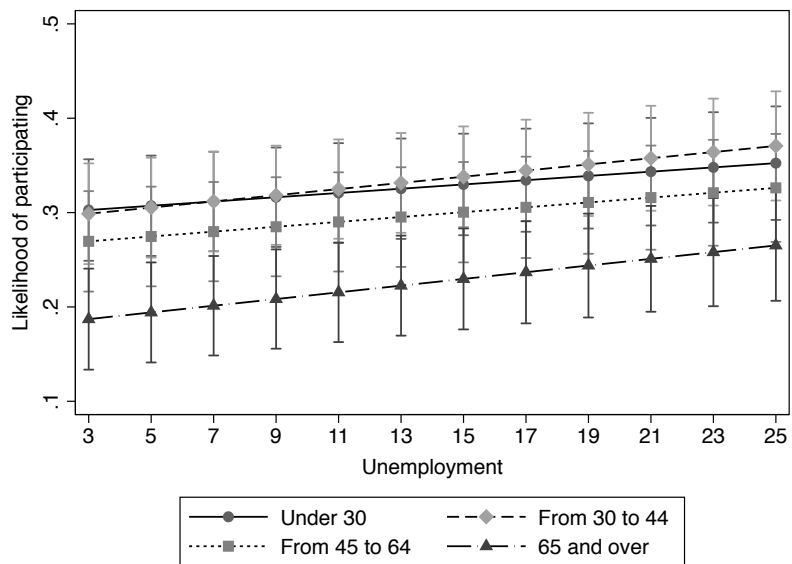


Figure A9. Likelihood of engaging in low-cost participation by income and country level of unemployment

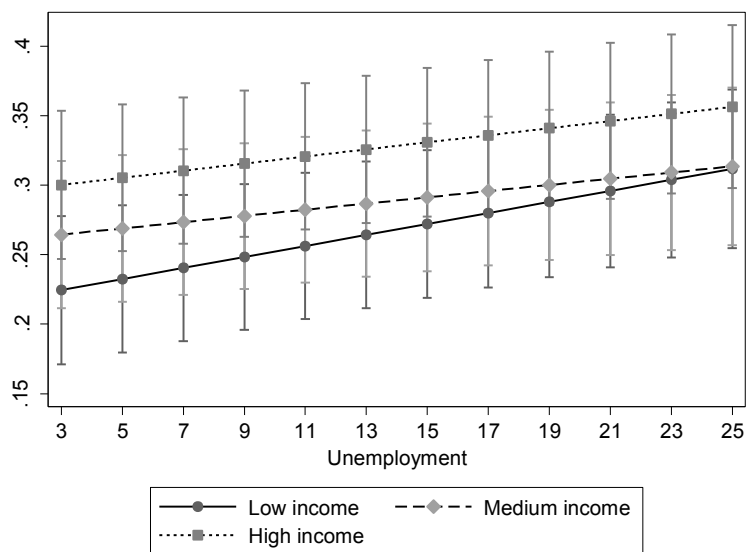


Figure A10. Likelihood of engaging in low-cost participation by education and country level of unemployment

