

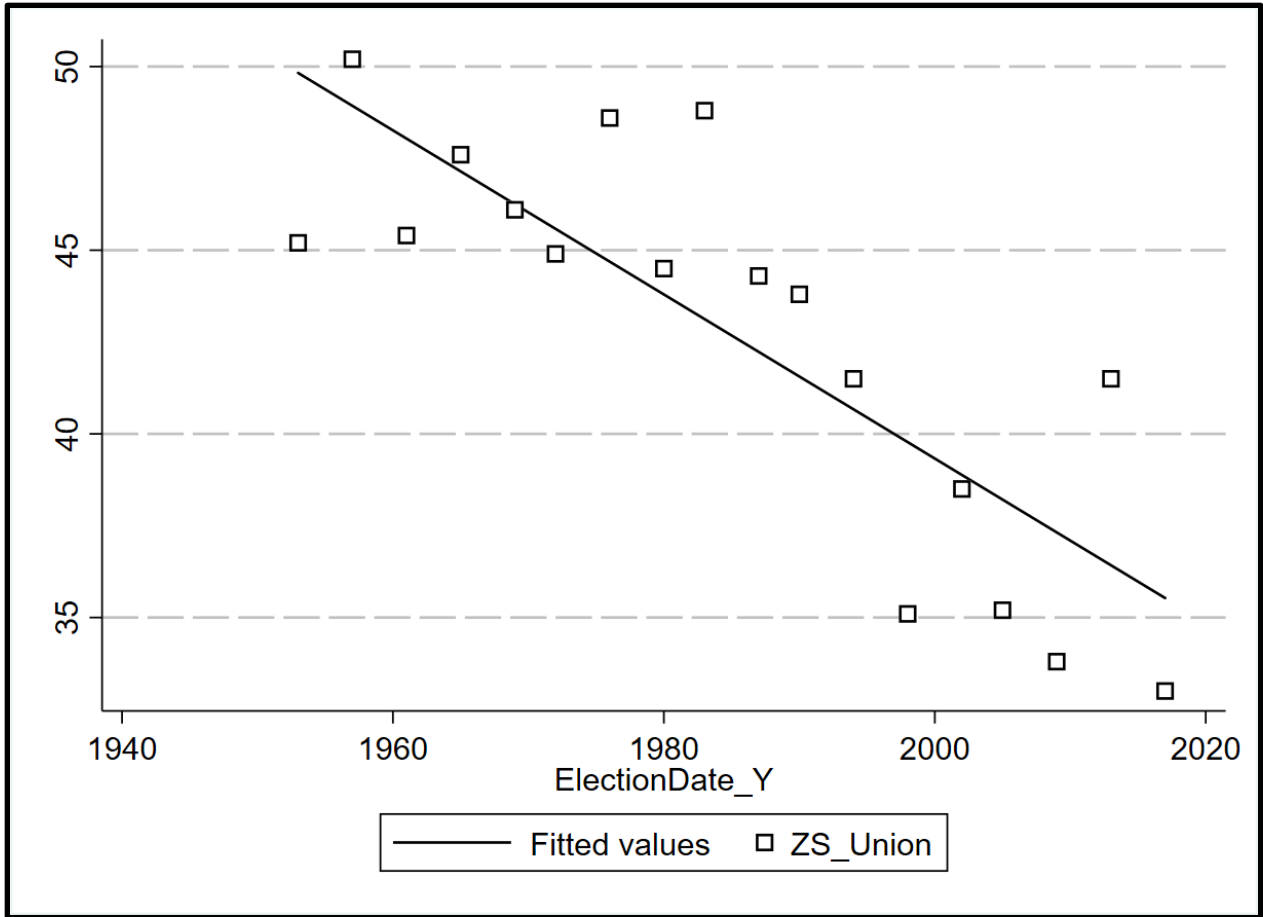
**Forecasting Bloc Support in German Federal Elections:  
A Political History Model**

**APPENDICES**

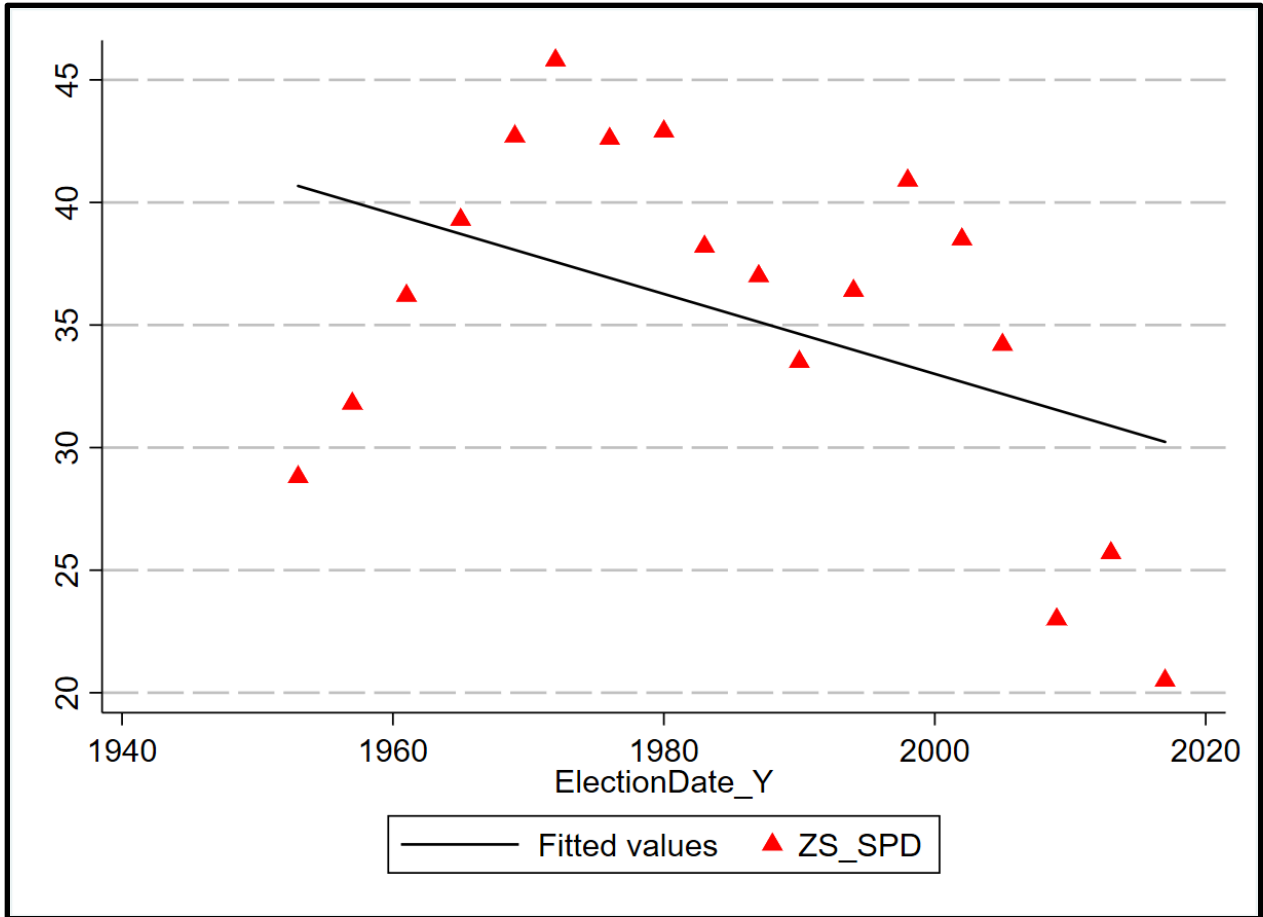
## APPENDIX A SUMMARY STATISTICS, CORRELATIONS, AND PLOTS

**Table A1** Summary Statistics for variables included in models explaining list vote share (*zweitstimme*) of the Union, SPD, and All Others in 18 German Federal Elections 1953-2017

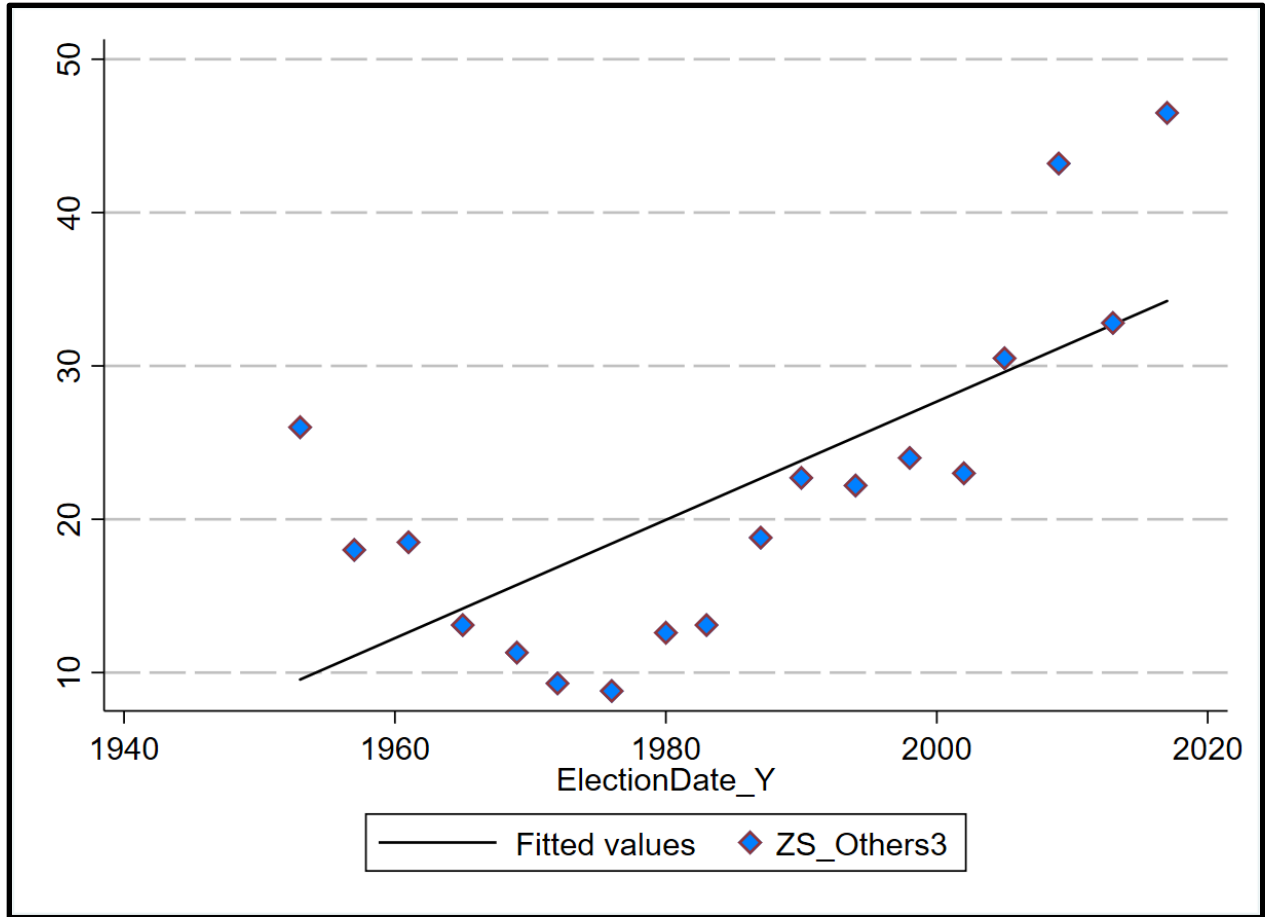
Variable	N	M	S/d	Min	Max
Vote Share: Union	18	42.667	5.407	33.0	50.2
Vote Share: SPD	18	35.444	11.625	20.5	45.8
Vote Share: All Others	18	21.911	10.834	8.8	46.5
Vote Share: CDU	18	33.967	4.157	26.8	39.7
Vote Share: CSU	18	8.700	1.545	6.2	10.6
Vote Share Previous Federal Election: Union	18	42.556	11.216	31.0	50.2
Vote Share Previous Federal Election: SPD	18	35.928	10.433	23.0	45.8
Vote Share Previous Federal Election: Others	18	21.539	10.024	8.8	43.2
Vote Share Previous Federal Election: CDU	18	33.878	4.332	25.2	39.7
Vote Share Previous Federal Election: CSU	18	8.678	10.024	5.8	10.6
Outgoing Federal Government: Grand Coalition	18	0.166	11.190	0	1
No. Land Minister Presidents <sub>t-6</sub> : Union	18	6.556	1.723	4	11
No. Land Minister Presidents <sub>t-6</sub> : SPD	18	6.333	1.908	4	9
No. Land Minister Presidents <sub>t-6</sub> : Others	18	0.333	0.686	0	2
Unified Germany	18	0.444	2.338	0	1
One-Step-Ahead 1994	18	0.611	0.502	0	1
One-Step-Ahead 1998	18	0.667	0.485	0	1
One-Step-Ahead 2002	18	0.722	0.461	0	1
One-Step-Ahead 2005	18	0.778	0.428	0	1
One-Step-Ahead 2009	18	0.833	0.384	0	1
One-Step-Ahead 2013	18	0.889	0.323	0	1
One-Step-Ahead 2017	18	0.944	0.236	0	1



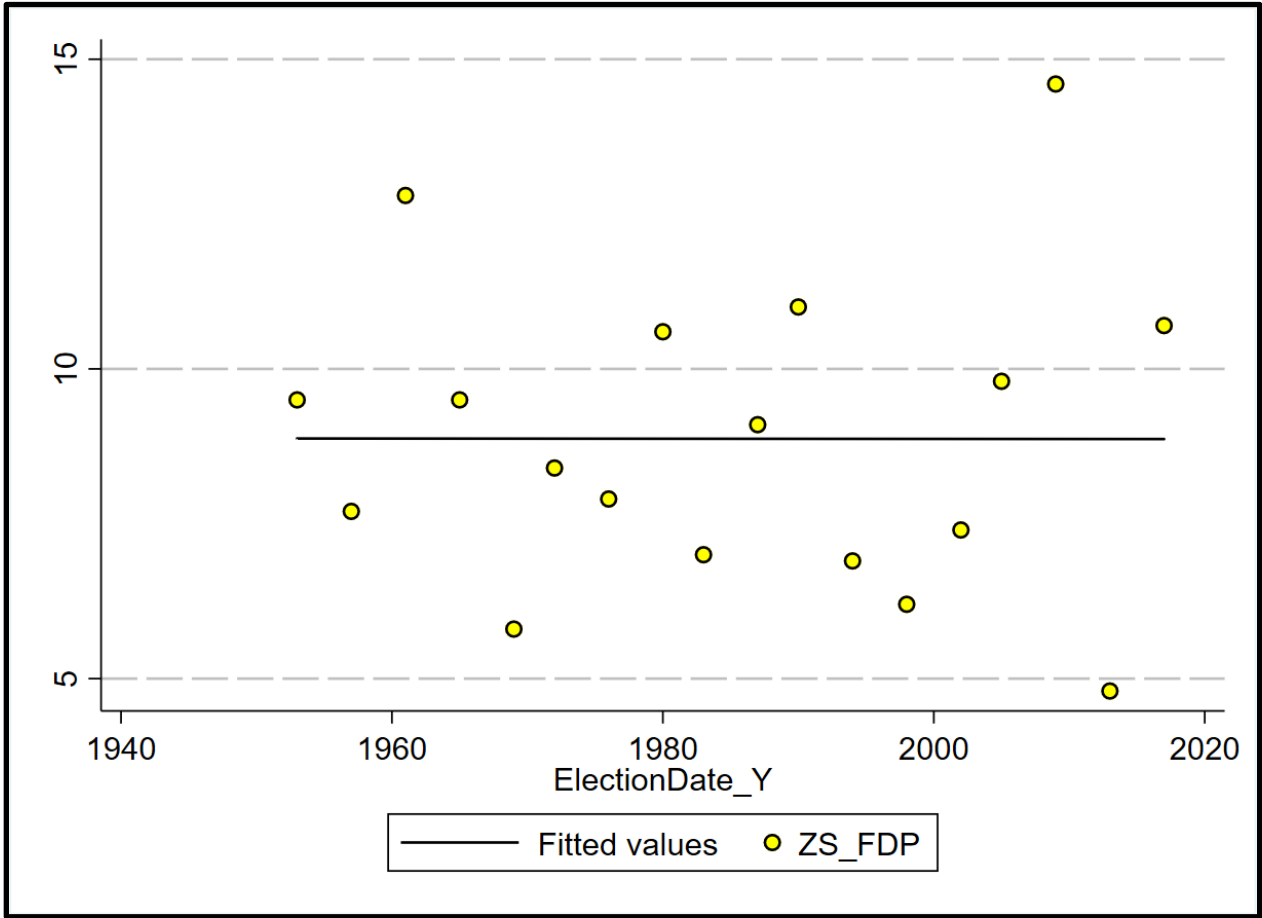
**Figure A1** Union (CDU and CSU combined) list vote share (*Zweitstimme*) in 18 German Federal Elections 1953-2017.



**Figure A2** SPD list vote share (*Zweitstimme*) in 18 German Federal Elections 1953-2017.



**Figure A3** All others (excluding CDU, CSU, and SPD) list vote share (*Zweitstimme*) in 18 German Federal Elections 1953-2017.



**Figure A4** FDP list vote share (*Zweitstimme*) in 18 German Federal Elections 1953-2017.

**APPENDIX B** VARIABLE OPERATIONALIZATIONS AND PARAMETERS USED FOR  
2021 FORECAST

**Table B1** Incumbent Government Composition in Germany by election 1953-2017

Election Year	Incumbent Government Composition by Party
1953	CDU; CSU; FDP; DP
1957	CDU; CSU; FDP; DP; GB
1961	CDU; CSU; DP
1965	CDU; CSU; FDP
1969	<b>CDU; CSU; SPD</b>
1972	SPD; FDP
1976	SPD; FDP
1980	SPD; FDP
1983	CDU; CSU; FDP
1987	CDU; CSU; FDP
1990	CDU; CSU; FDP
1994	CDU; CSU; FDP
1998	CDU; CSU; FDP
2002	SPD; Green;
2005	SPD; Green;
2009	<b>CDU; CSU; SPD</b>
2013	CDU; CSU; FDP
2017	<b>CDU; CSU; SPD</b>

*Note:* **BOLD** indicates grand coalitions.

**Vote Share: Union**

This variable measures the list share of the total valid vote (*zweitstimme*) achieved by the Christian Democratic Union (CDU) and Christian Social Union (CSU) combined in German Federal Elections.

**Vote Share: SPD**

This variable measures the list share of the total valid vote (*zweitstimme*) achieved by the Social Democratic Party (SPD) combined in German Federal Elections.

**Vote Share: All Others**

This variable measures the list share of the total valid vote (*zweitstimme*) achieved by all other parties combined (FDP; Greens; Die Linke; and all others) in German Federal Elections.

**Vote Share Previous Federal Election: Union**

This variable measures the list share of the total valid vote (*zweitstimme*) achieved by the Christian Democratic Union (CDU) and Christian Social Union (CSU) in the previous German Federal Election.

**Vote Share Previous Federal Election: SPD**

This variable measures the list share of the total valid vote (*zweitstimme*) achieved by the Social Democratic Party (SPD) in the previous German Federal Election.

**Vote Share Previous Federal Election: All Others**

This variable measures the list share of the total valid vote (*zweitstimme*) achieved by all other parties combined (FDP; Greens; Die Linke; and all others) in the previous German Federal Election.

**Outgoing Federal Government: Grand Coalition**

This variable measure whether the outgoing Federal Government is a Grand Coalition or not. When the Outgoing Federal Government is a Grand Coalition, we code it as 1 and 0 for all else.



**No. Land Minister Presidents  $t-6$  Union**

This variable measures the number of Land Minister Presidents held by the Christian Democratic Union (CDU) or the Christian Social Union (CSU) combined six months prior to election day.

**No. Land Minister Presidents  $t-6$  SPD**

This variable measures the number of Land Minister Presidents held by the Social Democratic Party (SPD) six months prior to election day.

**No. Land Minister Presidents  $t-6$  All Others**

This variable measures the number of Land Minister Presidents held by all others six months prior to election day.

**Unified Germany**

This variable measure whether the Federal Election was in a Unified Germany or not. Elections in a Unified Germany (from 1990 onwards) are coded 1 and all others are coded 0.

**PARAMETERS USED FOR 2021 FORECAST**

The 2021 forecast are based on the following values for model parameters:

**Table B2** Model Parameters for 2021 German Federal election forecast

	Union	SPD	All Others
Vote Share Previous Federal Election	33.0	20.5	46.5
Outgoing Federal Government: Grand Coalition	1	1	1
No. Land Minister Presidents $t-6$	7	7	2
Unified Germany	1	1	1

## APPENDIX C SUPPLEMENTARY ANALYSIS

**Table C1** Within-sample forecasts of the Union (CDU and CSU combined) list vote share (*Zweitstimme*) in 18 German Federal Elections 1953-2017

	Forecast	Official Result	Error Forecast – Official Result	Absolute Error
1953	44.3	45.2	-0.9	0.9
1957	47.0	50.2	-3.2	3.2
1961	47.8	45.4	2.4	2.4
1965	47.1	47.6	-0.5	0.5
1969	43.2	46.1	-2.9	2.9
1972	46.8	44.9	1.9	1.9
1976	47.0	48.6	-1.6	1.6
1980	47.5	44.5	3.0	3.0
1983	47.3	48.8	-1.5	1.5
1987	47.6	44.3	3.3	3.3
1990	39.6	43.8	-4.2	4.2
1994	39.2	41.5	-2.3	2.3
1998	38.9	35.1	3.8	3.8
2002	38.0	38.5	-0.5	0.5
2005	39.5	35.2	4.3	4.3
2009	35.4	33.8	1.6	1.6
2013	37.5	41.5	-4.0	4.0
2017	34.3	33.0	1.3	1.3

*Source of estimates:* Union Model in Table 1 of paper.

*Note:* Mean Absolute Error (MAE) within-sample = 2.410; Median Absolute Error within-sample = 2.321.

**Table C2** Within-sample forecasts of the SPD list vote share (*Zweitstimme*)  
in 18 German Federal Elections 1953-2017

	Forecast	Official Result	Error Forecast – Official Result	Absolute Error
1953	32.3	28.8	3.5	3.5
1957	30.3	31.8	-1.5	1.5
1961	34.3	36.2	-1.9	1.9
1965	37.7	39.3	-1.6	1.6
1969	38.0	42.7	-4.7	4.7
1972	44.5	45.8	-1.3	1.3
1976	45.1	42.6	2.5	2.5
1980	42.7	42.9	-0.2	0.2
1983	41.1	38.2	2.9	2.9
1987	39.3	37.0	2.3	2.3
1990	35.1	33.5	1.6	1.6
1994	34.2	36.4	-2.2	2.2
1998	36.4	40.9	-4.5	4.5
2002	39.9	38.5	1.4	1.4
2005	32.8	34.2	-1.4	1.4
2009	23.9	23.0	0.9	0.9
2013	26.1	25.7	0.4	0.4
2017	24.3	20.5	3.8	3.8

*Source of estimates:* SPD Model in Table 1 of paper.

*Note:* Mean Absolute Error (MAE) within-sample = 2.150; Median Absolute Error within-sample = 1.750.

**Table C3** Within-sample forecasts of the All Others list vote share (*Zweitstimme*)  
in 18 German Federal Elections 1953-2017

	Forecast	Official Result	Error Forecast – Official Result	Absolute Error
1953	27.3	26.0	1.3	1.3
1957	19.3	18.0	1.3	1.3
1961	14.2	18.5	-4.3	4.3
1965	14.4	13.1	1.3	1.3
1969	20.6	11.3	9.3	9.3
1972	10.9	9.3	1.6	1.6
1976	9.9	8.8	1.1	1.1
1980	9.7	12.6	-2.9	2.9
1983	11.5	13.1	-1.6	1.6
1987	11.8	18.8	-7.0	7.0
1990	23.9	22.7	1.2	1.2
1994	25.8	22.2	3.6	3.6
1998	25.5	24.0	1.5	1.5
2002	26.4	23.0	3.4	3.4
2005	25.9	30.5	-4.6	4.6
2009	38.4	43.2	-4.8	4.8
2013	37.0	32.8	4.2	4.2
2017	42.0	46.5	-4.5	4.5

*Source of estimates:* All Others Model in Table 1 of paper.

*Note:* Mean Absolute Error (MAE) within-sample = 3.308; Median Absolute Error within-sample = 3.175.

**Table C4** Seemingly Unrelated Regression (SUR) models explaining vote share (*Zweitstimme*) of the CDU, CSU, SPD, and All Others in German Federal Elections 1953-2017

	CDU	CSU	SPD	All Others
Vote Share Previous Federal Election	0.129 (0.143)	0.112 (0.119)	0.793*** (0.098)	0.468** (0.161)
Outgoing Fed Government: Grand Coalition	-3.044 <sup>+</sup> (1.570)	-0.859* (0.460)	-3.775* (1.613)	8.880** (2.598)
No. Land Minister Presidents $t-6$	0.209 (0.381)	0.123 (0.108)	1.806*** (0.505)	1.208 (2.011)
Unified Germany	-5.467*** (1.489)	-2.600*** (0.460)	-8.543*** (1.952)	9.511*** (2.453)
Constant	31.160*** (5.763)	8.224*** (1.015)	-0.066 (4.783)	5.716* (2.651)
R <sup>2</sup>	0.614	0.845	0.873	0.858
Root Mean Square Error (RMSE)	2.509	0.590	2.476	3.968
N elections	18			
AIC/BIC	315.4618/333.2693			

Note: Entries are unstandardized coefficients of seemingly unrelated regression (SUR) with standard errors in parentheses. += p<0.1; \* = p<0.05; \*\* = p<0.01; \*\*\* =p<0.001. Root Mean Square Error (RMSE) also referred to as Standard Error of Estimate (SEE).

**Table C5** Seemingly Unrelated Regression (SUR) models explaining vote share (*Zweitstimme*) of the Union, SPD, and All Others in German Federal Elections 1953-2017: Naïve Models

	Union	SPD	All Others
Vote Share Previous Federal Election	0.593*** (0.127)	0.789*** (0.142)	0.738*** (0.117)
Constant	17.439** (5.507)	7.110 (5.194)	6.019* (2.981)
R <sup>2</sup>	0.223	0.634	0.582
Root Mean Square Error (RMSE)	4.632	4.201	6.807
Mean Absolute Error (MAE) within-sample	3.675	3.315	5.120
N elections	18		
AIC/BIC	254.8566/260.1988		

Note: Entries are unstandardized coefficients of seemingly unrelated regression (SUR) with standard errors in parentheses. += p<0.1; \* = p<0.05; \*\* = p<0.01; \*\*\* =p<0.001. Root Mean Square Error (RMSE) also referred to as Standard Error of Estimate (SEE).

**Table C6** OLS models explaining vote share (*Zweitstimme*) of the Union, SPD, and All Others in 18 German Federal Elections 1953-2017

	Union	SPD	All Others
Vote Share Previous Federal Election	0.062 (0.156)	0.811*** (0.119)	0.355 (0.229)
Outgoing Federal Government: Grand Coalition	-3.872 <sup>+</sup> (1.946)	-3.585 <sup>+</sup> (1.902)	8.506* (3.090)
No. Land Minister Presidents $t_{-6}$	-0.159 (0.520)	1.743** (0.508)	2.756 (2.932)
Unified Germany	-7.499** (2.056)	-9.552** (2.365)	10.592** (3.140)
Constant	45.033*** (7.410)	-2.515 (5.855)	7.216 (3.856)
N	18	18	18
R <sup>2</sup>	0.762	0.876	0.861
Adjusted R <sup>2</sup>	0.689	0.838	0.818
Root Mean Square Error (RMSE)	3.015	2.877	4.618
Durbin Watson Statistic	2.824	1.533	1.834
AIC	99.94506	93.26763	110.3057

Note: Entries are unstandardized coefficients with standard errors in parentheses. <sup>+</sup>= p<0.1; \* = p<0.05; \*\* = p<0.01; \*\*\* =p<0.001. Root Mean Square Error (RMSE) also referred to as Standard Error of Estimate (SEE).