

Online Appendix to “‘Rise and Fall’ of the Walrasian Program in Economics: A Social and Intellectual Dynamics of the General Equilibrium Theory,” by Olessia Kirtchik and Ivan Boldyrev

March 2024 issue

(DOI: <https://doi.org/10.1017/S1053837222000712>)

I. Statistical analysis of the dataset: Elementary statistics

Table A1: Sex ratio

	<i>Frequencies</i>	%
Men	141	94.6
Women	8	5.4
Total	149	100

Table A2: Year of PhD diploma

	<i>Frequencies</i>	%
1940s	3	2
1950s	16	10.7
1960s	30	20.1
1970s	62	41.6
1980s	19	12.8
1990s	9	6
No information	10	6.7
Total	149	100

Table A3: Geographical distribution

	Country of PhD	First Affiliation	Last Affiliation
	<i>Frequencies</i>	<i>Frequencies</i>	<i>Frequencies</i>
United States	94	75	79
France	11	19	17
Germany	7	6	5
United Kingdom	6	9	6

Israel	4	3	4
Japan	4	6	7
Belgium	3	4	3
No information	6	3	0
Other	14	24	28
Total	149	149	149

Table A4: University of PhD

	<i>Frequencies</i>	%
UC Berkeley	16	10.7
Yale	12	8.1
Stanford	10	6.7
Harvard	8	5.4
MIT	7	4.7
Minnesota	6	4
Princeton	6	4
No information	6	4
Other	78	52.4
Total	149	100

Table A5: Publications in GET

	Year first article	Year last article	Number of cites (*)
Min	1951	1960	93
1st Qu.	1970	1990	217
Median	1974	2002	446
Mean	1975	1998	891,7
3rd Qu.	1982	2008	1113,5
Max	2000	2017	5758

(*) the number of cites for the most cited articles published by GE theorists is retrieved from the Web of Science bibliographic database as of 2018.

Table A6: Fellowships, awards and other honors

	<i>Frequencies (of the total=149)</i>
Fellow_Econometric_Society	99
Fellow_SAET	63
Other societies (INFORMS, game theory)	12
AEA_Distinguished_Fellow	28
President_ES_SAET	25
Prizes from Learned Societies	10
National_awards	40
Foreign_or_international_academies	35
Non_US_national_academies	24
US_most_prestigious_learned_societies	29
President_national_societies	22
President_international_societies	16
highest_national_scientific_award	18
Highest_national_distinction	12
High_Distinctions_from_foreign_states	10
Highest_international_awards	7

Table A7: Main affiliations of the GE theorists

	<i>Frequencies (of the total = 149)</i>
Stanford	8
UC_Berkeley	7
Minnesota	6
CEPREMAP	5
Cornell	5
Columbia	4
UCLA	4
Paris_I	4
Cowles	4
LSE	3

Washington	3
Cambridge	3
Copenhagen	3
UC_Davis	3
Northwestern	3
Bonn	3
Hebrew	3
MIT	3
Paris_IX	2
Tokyo	2
Purdue	2
EHESS	2
UCSD	2
Harvard	2
Pennsylvania	2
Illinois	2
SUNY	2
INSEE	2
CORE	2
CEMI AS USSR	2
Bielefeld	2
Osaka	2
Toulouse	1
Royal_Holloway_College	1
Universidad_de_Vigo	1
McGill	1
Tel Aviv	1
Meisei	1
Caltech	1
Melbourne	1
Instituto_Brasileiro_Eco	1

Michigan	1
Complutense_de_Madrid	1
Australian_National	1
Kyoto	1
Yale	1
IAS_Vienna	1
Aix_Marseille_III	1
Uni_Catholique_Louvain	1
Chicago	1
Princeton	1
Norwegian_School_Eco	1
Rochester	1
NYU	1
Southern_California	1
Ohio	1
Johns_Hopkins	1
Universita_di_Brescia	1
Tilburg	1
Universita_di_Venezia	1
Torcuato_Di_Tella	1
Carnegie_Mellon	1
Brown	1
Western_Ontario	1
UC_Santa_Barbara	1
IMPA_Brazil	1
Lund	1
Helsinki	1
Uni_Nova_de_Lisboa	1
Polytechnique	1
Maastricht	1
Pompeu_Fabra	1

Vienna	1
Oslo	1
Weizmann	1
Oxford	1
Duke	1
Boston_College	1
North_Carolina_State	1
Grand Total	149

II. Multiple correspondence analysis

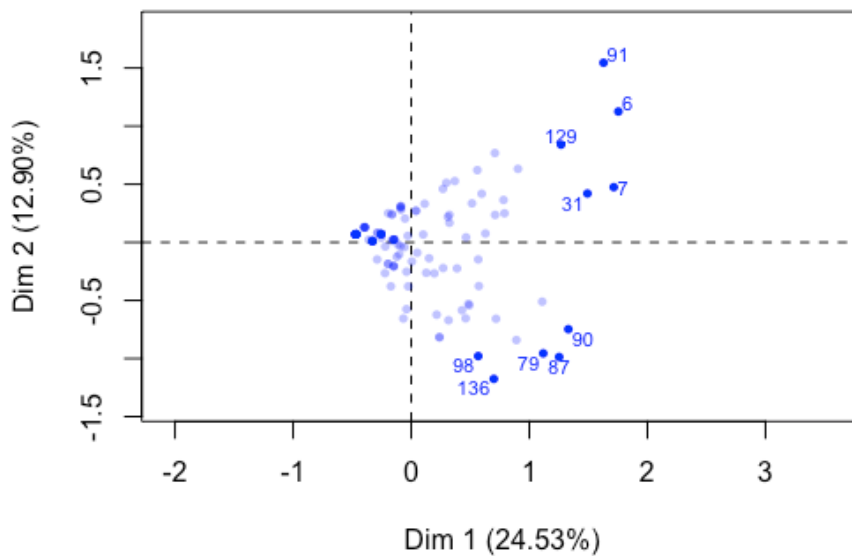


Figure A1 - Individuals factor map (MCA) The labeled individuals are those with the higher contribution to the plane construction.

Variables which explain the best the distance between individuals:

## Main_Affiliation	Year_PhD	Advisor_PhD
## 5.974912e-09	1.064484e-06	1.092623e-04
## Discipline_before_PhD	Country_PhD	Country_before_PhD
## 1.160589e-04	7.379412e-04	1.535545e-03
## Country_Last	Country_1st_affiliation	Main_Discipline
## 4.750671e-03	1.090428e-02	4.708614e-02
## Mobility	Cowles_mob	Discipline_PhD
## 4.807703e-02	7.384075e-02	7.443324e-02

The best qualitative variable to illustrate the distance between individuals on this plane is : *Main_Affiliation*.

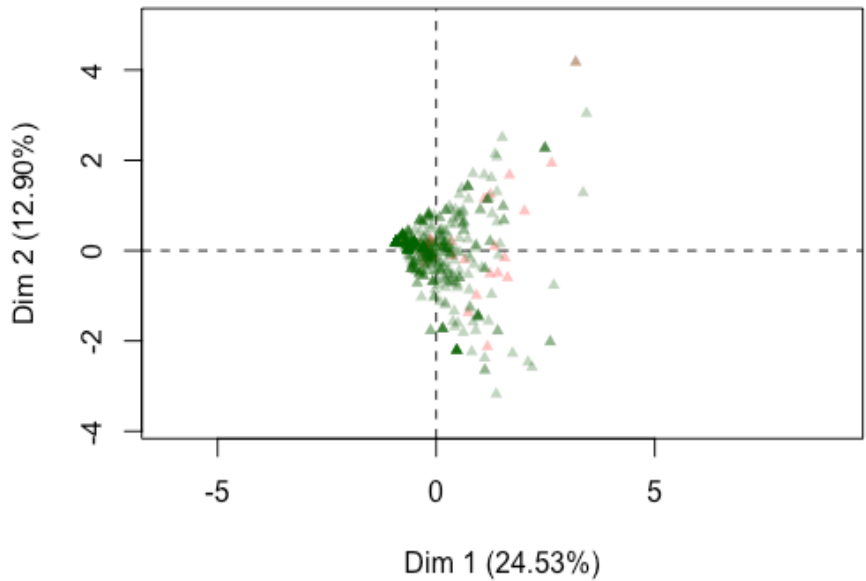


Figure A2 - Variables factor map (MCA) *The factors in red are considered as active whereas those in green are illustrative.*

The **Ascending Hierarchical Classification** made on individuals reveals 4 clusters: low amount of scientific credit (1), higher recognition in the American field of economics (2), higher recognition in other national fields (3), the highest international recognition (4).

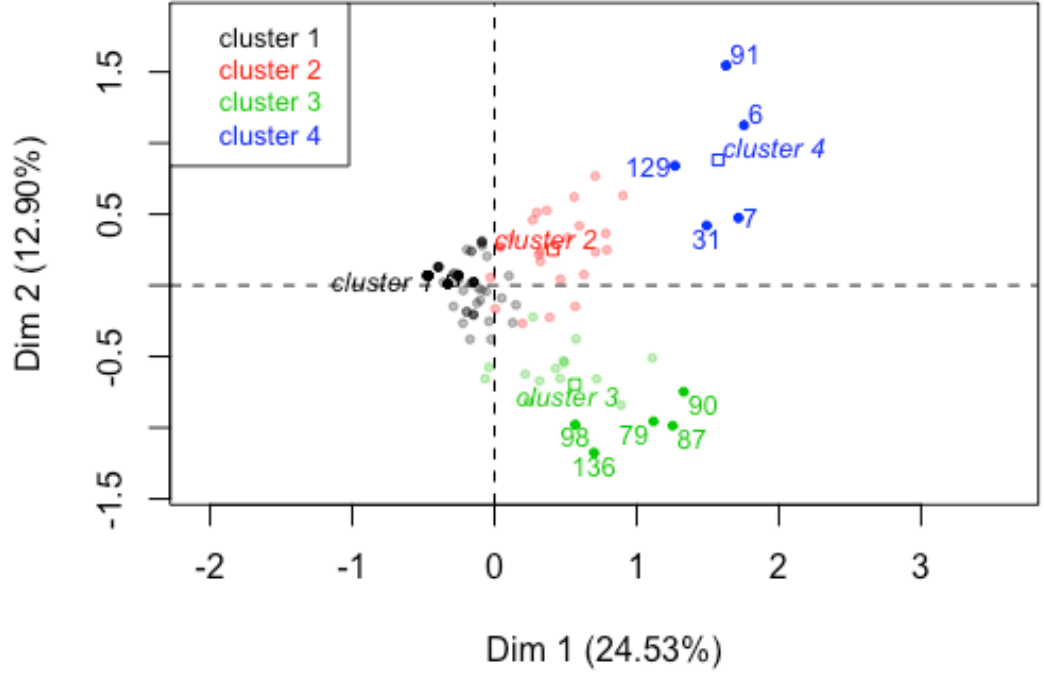


Figure A3 – Distribution of scientific credit among GE scholars

Most frequent modalities of variables for each cluster (*sorted from the most common*):

The cluster 1

AEA_Distinguished_Fellow=AEA_Distinguished_Fellow_No,
President_ES_SAET=President_ES_SAET_No,
Foreign_or_international_academies=Foreign_or_international_academies_No,
US_most_prestigious_societies=US_most_prestigious_societies_No,
Fellow_Econometric_Soc=Fellow_Econometric_Soc_No,
highest_national_scientific_award=highest_national_scientific_award_No,
President_national_societies=President_national_societies_No,
Prizes_from_Learned_Societies=Prizes_from_Learned_Societies_No,
Highest_national_distinction=Highest_national_distinction_No,
Non_US_national_academy=Non_US_national_academy_No.

The cluster 2

US_most_prestigious_societies=US_most_prestigious_societies_Yes,
AEA_Distinguished_Fellow=AEA_Distinguished_Fellow_Yes,
Prizes_from_Learned_Societies=Prizes_from_Learned_Societies_Yes,
President_ES_SAET=President_ES_SAET_Yes,
Country_Last=Country_Last_USA,
Fellow_Econometric_Soc=Fellow_Econometric_Soc_Yes,
Country_1st_affiliation=Country_1st_affiliation_USA,
Country_PhD=Country_PhD_USA,
Institution_PhD=Institution_PhD_Purdue,
Non_US_national_academy=Non_US_national_academy_No.

The cluster 3

Non_US_national_academy=Non_US_national_academy_Yes,
Highest_national_distinction=Highest_national_distinction_Yes,
Foreign_or_international_academies=Foreign_or_international_academies_Yes,
highest_national_scientific_award=highest_national_scientific_award_Yes,
President_national_societies=President_national_societies_Yes,
Fellow_Econometric_Soc=Fellow_Econometric_Soc_Yes, President_ES_SAET=President_ES_SAET_Yes,
Country_PhD=Country_PhD_Japan,
Country_before_PhD=Country_before_PhD_Japan
National_awards=National_awards_Yes.

The cluster 4

Highest_international_awards=Highest_international_awards_Yes,
High_Distinctions_foreign_states=High_Distinctions_foreign_states_Yes,
US_most_prestigious_societies=US_most_prestigious_societies_Yes,
President_international_societies=President_international_societies_Yes,
Year_PhD=1950s,
highest_national_scientific_award=highest_national_scientific_award_Yes,
Prizes_from_Learned_Societies=Prizes_from_Learned_Societies_Yes,
Fellow_INFORMS_Game_Theory=Fellow_INFORMS_Game_Theory_Yes,
Main_Discipline=Main_Discipline_Mathematics,
Foreign_or_international_academies=Foreign_or_international_academies_Yes.