

## Participation in environmental organizations: an empirical analysis\*

**BENNO TORGLER**

*The School of Economics and Finance, Queensland University of Technology, GPO Box 2434, Brisbane, QLD 4001, Australia and CREMA – Center for Research in Economics, Management and the Arts, Gellertstrasse 18, CH-4052 Basel, Switzerland. Email: benno.torgler@qut.edu.au*

**MARÍA A. GARCÍA-VALIÑAS**

*Oviedo Efficiency Group, Department of Economics, School of Economics and Business, University of Oviedo, Avda. del Cristo s/n, 33006, Oviedo (Asturias), Spain. Email: mariangv@uniovi.es*

**ALISON MACINTYRE**

*The School of Economics and Finance, Queensland University of Technology, GPO Box 2434, Brisbane, QLD 4001, Australia. Email: alison.macintyre@qut.edu.au*

## **APPENDIX**

---

\* For advice and suggestions, thanks are due to Doris Aebi, Jouni Paavola, the participants at the 2nd Atlantic Workshop on Energy and Environmental Economics, participants at the 3<sup>rd</sup> World Congress of Environmental and Resource Economists (Kyoto), and three anonymous referees.

Table A1. Countries' participation in environmental organizations

Country	Participation in EO (in %)	N	Don't know and missing values (in %)	CORRUPTION	IMPORTANCE OF POLITICS
<i>Western Europe/ USA/Australia</i>					
USA	9.073	1,521	1.362	2.612	2.685
Australia	6.699	2,045	0.146	2.327	2.510
Western Germany	2.976	1,008	0.885	2.495	0.259
Eastern Germany	1.198	1,002	0.694	2.569	0.246
Switzerland	4.996	1,201	0.908	0.230	0.221
Norway	0.888	1,126	0.089	2.015	2.409
Finland	1.114	987	0.000	2.188	1.935
Spain	2.56	1,211	0.000	2.887	0.188
<i>CEE and FSU</i>					
Bulgaria	0.187	1,072	0.000	3.170	2.006
Belarus	0.526	2,092	0.000	3.244	2.287
Estonia	0.392	1,021	0.000	2.891	2.083
Georgia	0.579	2,589	0.154	3.249	2.297
Latvia	0.833	1,200	0.000	3.114	2.030
Lithuania	0.398	1,006	0.297	3.337	2.094
Moldova	1.321	984	0.000	3.088	2.075
Armenia	1.150	2,000	0.000	3.305	2.474
Russia	0.441	2,040	0.000	3.359	2.069
Slovenia	0.798	1,003	0.397	2.525	1.800
Ukraine	0.569	2,811	0.000	3.304	2.083
Azerbaijan	0.250	2,002	0.000	2.942	2.259
Serbia	0.469	1,280	0.000	0.288	1.990
Macedonia	2.312	995	0.000	3.393	2.102
Croatia	1.427	1,191	0.418	0.291	1.989
Bosnia-Herzegovina	2.917	1,200	0.000	2.910	2.405
<i>Latin America</i>					
Mexico	9.410	1,509	0.066	3.148	2.442
Argentina	2.595	1,079	0.000	3.127	2.039
Brazil	6.179	1,149	0.000	3.407	2.479
Chile	3.800	1,000	0.000	2.575	1.828
Peru	2.973	1,211	0.000	0.000	2.284
Venezuela	5.518	1,196	0.333	3.165	1.883
Uruguay	4.000	1,000	0.000	2.549	2.205
<i>Asia</i>					
South Korea	6.200	1,242	0.560	2.831	2.793
India	4.755	2,040	0.000	3.014	2.135
Taiwan	1.656	1,449	0.207	2.387	2.365
China	2.400	1,500	0.000	0.000	2.803
Philippines	7.083	1,200	0.000	2.958	2.442
Bangladesh	5.836	1,525	0.000	2.774	0.250
<i>Africa</i>					
Nigeria	12.279	2,769	0.000	3.467	0.239

Table A2. 2SLS estimations

<i>WEIGHTED PROBIT</i>	<i>IMP. OF POLITICS</i>		<i>DISCUSSING POLITICS</i>		<i>POLITICAL INTEREST</i>	
<b>Specifications</b>	<b>(7)</b>		<b>(8)</b>		<b>(9)</b>	
	First Stage Regression	2SLS	First Stage Regression	2SLS	First Stage Regression	2SLS
INDEPENDENT VARIABLES						
POLITICAL INTEREST		0.077***		0.110***		0.084***
VARIABLES		3.52		3.24		3.88
<i>a) Demographic Factors</i>						
AGE 30-49	0.059*** <i>4.85</i>	-0.003 <i>-0.92</i>	0.107*** <i>13.29</i>	-0.010** <i>-2.21</i>	0.128*** <i>10.86</i>	-0.009** <i>-2.38</i>
AGE 50-64	0.177*** <i>11.64</i>	-0.008* <i>-1.68</i>	0.170*** <i>16.72</i>	-0.014** <i>-2.09</i>	0.237*** <i>16.13</i>	-0.015** <i>-2.52</i>
AGE 65+	0.181*** <i>9.48</i>	-0.016*** <i>-2.97</i>	0.089*** <i>6.95</i>	-0.012** <i>-2.62</i>	0.198*** <i>10.73</i>	-0.019*** <i>-3.32</i>
FEMALE	-0.140*** <i>-14.79</i>	0.001 <i>0.34</i>	-0.181*** <i>-28.30</i>	0.011 <i>1.64</i>	-0.226*** <i>-24.41</i>	0.009* <i>1.74</i>
MIDDLE EDUCATION	0.215*** <i>17.88</i>	-0.008 <i>-1.47</i>	0.182*** <i>22.48</i>	-0.011* <i>-1.73</i>	0.295*** <i>24.81</i>	-0.016** <i>-2.43</i>
UPPER EDUCATION	0.441*** <i>30.37</i>	-0.009 <i>-0.92</i>	0.360*** <i>37.05</i>	-0.016 <i>-1.23</i>	0.560*** <i>39.53</i>	-0.023* <i>-1.86</i>
<i>b) Marital Status</i>						
MARRIED	0.040*** <i>3.80</i>	-0.005** <i>-2.00</i>	0.029*** <i>4.10</i>	-0.005** <i>-2.07</i>	0.029*** <i>2.82</i>	-0.004* <i>-1.76</i>
<i>c) Economic Variables</i>						
FINANCIAL SATISFACTION	0.007*** <i>3.23</i>	0.002*** <i>3.97</i>	-0.0002 <i>-0.16</i>	0.002*** <i>5.61</i>	0.009*** <i>4.53</i>	0.002*** <i>3.36</i>
UPPER CLASS	0.134*** <i>3.29</i>	0.012 <i>0.96</i>	0.010 <i>0.36</i>	0.021* <i>1.70</i>	0.053 <i>1.29</i>	0.018 <i>1.44</i>
<i>d) Employment Status</i>						
SELFEMPLOYED	-0.001 <i>-0.06</i>	0.002 <i>0.47</i>	0.009 <i>0.82</i>	0.002 <i>0.58</i>	0.016 <i>0.97</i>	0.00003 <i>0.01</i>
UNEMPLOYED	-0.034** <i>-1.97</i>	0.000 <i>0.06</i>	-0.033*** <i>-2.94</i>	0.002 <i>0.56</i>	-0.054*** <i>-3.32</i>	0.001 <i>0.45</i>
<i>e) Regions</i>						
CEE and FSU	-0.231*** <i>-18.35</i>	-0.001 <i>-0.15</i>	-0.022** <i>-2.48</i>	-0.016*** <i>-6.11</i>	-0.196*** <i>-15.67</i>	-0.001 <i>-0.20</i>
LATIN AMERICA	-0.164*** <i>-10.31</i>	0.030*** <i>5.54</i>	-0.208*** <i>-19.24</i>	0.040*** <i>4.76</i>	-0.519*** <i>-33.60</i>	0.062*** <i>4.99</i>
ASIA	0.207*** <i>13.45</i>	0.002 <i>0.34</i>	-0.073*** <i>-7.27</i>	0.025*** <i>5.91</i>	-0.117*** <i>-7.39</i>	0.034*** <i>7.20</i>
AFRICA	0.346*** <i>6.55</i>	0.127*** <i>6.76</i>	-0.085*** <i>-2.69</i>	0.162*** <i>9.40</i>	-0.139*** <i>-2.73</i>	0.161*** <i>9.82</i>
INSTRUMENT						
GENERALIZED TRUST	0.105*** <i>9.79</i>		0.066*** <i>8.99</i>		0.107*** <i>10.14</i>	
F-Test for excluded instruments	95.76***		80.81***		102.83***	
Anderson canon. Corr. LR stat.		107.51***		95.01***		118.34***
Number of observations	45,578	45,578	45,719	45,719	44,670	44,670

Notes: In the reference group are AGE<30, MALE, LOWER EDUCATION, OTHER MARITAL STATUS, OTHER CLASSES, OTHER EMPLOYMENT STATUS, WESTERN EUROPE + USA + AUSTRALIA. Significance levels: \* 0.05 < p < 0.10, \*\* 0.01 < p < 0.05, \*\*\* p < 0.01, t-statistics in italics.

Table A3. Environmental participation and social norm of not bribing

WEIGHTED PROBIT	Coeff.	z-Stat.	Marg. Effects	Coeff.	z-Stat.	Marg. Effects	Coeff.	z-Stat.	Marg. Effects	Coeff.	z-Stat.	Marg. Effects	Coeff.	z-Stat.	Marg. Effects
Specifications	(18)			(19)			(20)			(21)			(22)		
	WITHOUT NIGERIA						WITH NIGERIA								
<b>INDEPENDENT VARIABLES</b>															
<i>a) Demographic Factors</i>															
AGE 30-49	-0.011	-0.28	0.000	-0.043	-1.14	-0.002	0.015	0.39	0.001	0.015	0.39	0.001	-0.142***	-2.86	-0.005
AGE 50-64	-0.038	-0.80	-0.001	-0.089*	-1.91	-0.003	0.026	0.54	0.001	0.017	0.35	0.001	-0.150***	-2.51	-0.004
AGE 65+	-0.183***	-2.64	-0.006	-0.264***	-3.81	-0.008	-0.099	-1.40	-0.003	-0.098	-1.36	-0.003	-0.266***	-3.00	-0.007
FEMALE	-0.102***	-3.32	-0.004	-0.088***	-2.94	-0.003	-0.105***	-3.46	-0.004	-0.105***	-3.42	-0.004	-0.149***	-4.11	-0.005
MIDDLE EDUCATION	-0.012	-0.28	0.000	-0.073*	-1.80	-0.003	0.025	0.62	0.001	0.025	0.62	0.001	0.036	0.78	0.001
UPPER EDUCATION	0.097**	2.15	0.004	0.017	0.38	0.001	0.143***	3.21	0.006	0.143***	3.19	0.006	0.161***	3.12	0.006
<i>b) Marital Status</i>															
MARRIED	0.021	0.62	0.001	0.013	0.37	0.000	-0.003	-0.09	0.000	-0.006	-0.17	0.000	-0.050	-1.14	-0.002
<i>c) Economic Variables</i>															
FINANCIAL SATISFACTION	0.031***	4.99	0.001	0.032***	5.26	0.001	0.022***	3.47	0.001	0.022***	3.49	0.001	0.025***	3.36	0.001
UPPER CLASS	0.103	0.90	0.004	0.127	1.22	0.006	0.111	1.05	0.004	0.118	1.11	0.005	0.033	0.29	0.001
<i>d) Employment Status</i>															
SELFEMPLOYED	0.091**	1.94	0.004	0.182***	4.11	0.008	0.007	0.16	0.000	0.006	0.13	0.000	-0.020	-0.38	-0.001
UNEMPLOYED	-0.027	-0.48	-0.001	-0.005	-0.10	0.000	-0.036	-0.65	-0.001	-0.030	-0.54	-0.001	-0.014	-0.20	0.000
<i>e) Regions</i>															
TRANSITION COUNTRIES							-0.207***	-4.20	-0.007	-0.204***	-4.11	-0.007	-0.164***	-2.74	-0.005
LATIN AMERICA							0.228***	5.44	0.009	0.213***	4.96	0.009	0.23***	4.30	0.009
ASIA							0.364***	8.04	0.017	0.363***	7.65	0.017	0.376***	6.63	0.017
AFRICA							0.768***	10.59	0.060	0.758***	10.33	0.059	0.75***	7.72	0.054
<i>f) Political Interest</i>															
IMPORTANCE OF POLITICS	0.086***	5.13	0.003	0.101***	6.13	0.004	0.078***	4.90	0.003	0.075***	4.55	0.003	0.083***	4.27	0.003
<i>g) Social Norms of Compliance</i>															
NORM AGAINST BRIBING	-0.049***	-3.53	-0.002	-0.047***	-3.47	-0.002	-0.042***	-3.12	-0.001	-0.039***	-2.88	-0.001	-0.043***	-2.60	-0.001
<i>f) Volunteering</i>															
OTHER VOLUNTARY PART.	1.039***	27.45	0.060	1.058***	28.56	0.064	0.988***	25.28	0.052	0.985***	25.10	0.052	1.003***	21.53	0.051
<i>h) Opportunity Costs/ Preferences for Alternative Activities</i>															
IMPORTANCE OF FAMILY										0.014	0.35	0.001	-0.073	-1.39	-0.002
IMPORTANCE OF LEISURE										0.012	0.61	0.000	0.022	0.94	0.001
IMPORTANCE OF WORK										0.029	1.19	0.001	0.013	0.45	0.000
CHILDREN													0.026**	2.10	0.001
Pseudo R2	0.1517			0.1565			0.1816			0.1804			0.1925		
Number of observations	40,603			42,343			42,343			41,538			31,455		
Prob > chi2	0.0000			0.0000			0.0000			0.0000			0.0000		

Notes: Robust standard errors. In the reference group are AGE<30, MALE, LOWER EDUCATION, OTHER MARITAL STATUS, OTHER CLASSES, OTHER EMPLOYMENT STATUS, WESTERN EUROPE + USA + AUSTRALIA, NOT ACTIVE IN VOLUNTARY ORGANIZATIONS. Significance levels: \* 0.05 < p < 0.10, \*\* 0.01 < p < 0.05, \*\*\* p < 0.01. CEE and FSU countries not included.

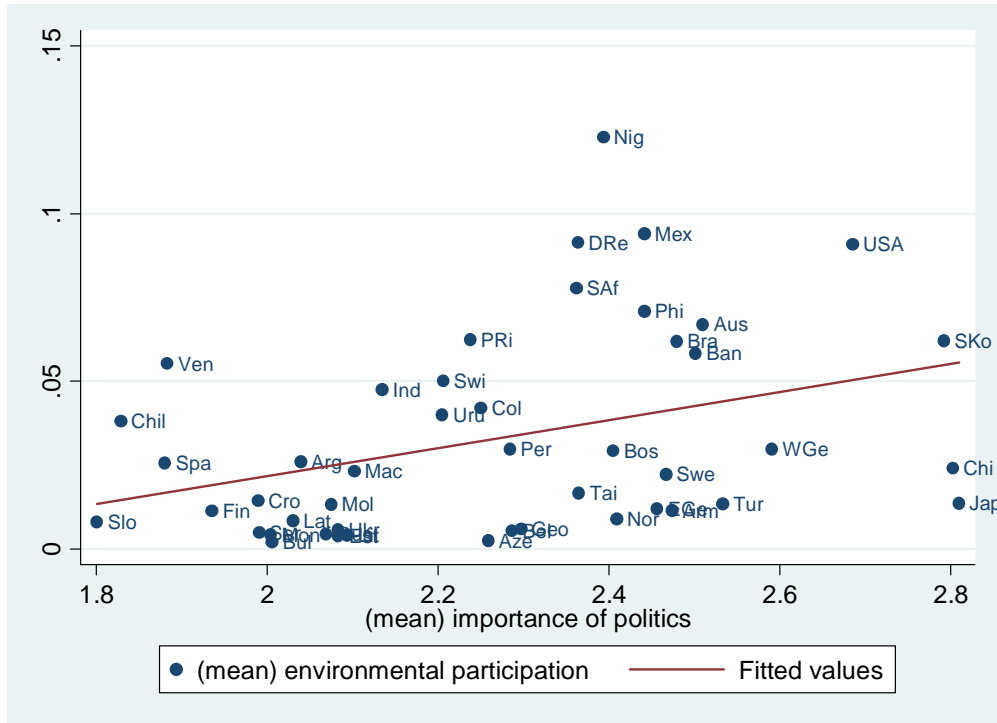


Figure A1. *Political interest and environmental participation*

Notes: Pearson  $r=0.362$ . Countries (East and West Germany has been analysed separately): Spa=Spain, USA=USA, Jap=Japan, Nor=Norway, Swe=Sweden, Swi=Switzerland, Fin=Finland, WGe=West Germany, EGe=East Germany, Aus=Australia, Mex=Mexico, Saf=South Africa, Arg=Argentina, SKo=South Korea, Pol=Poland, PRi=Puerto Rica, Bra=Brazil, Nig=Nigeria, Chil=Chile, Bel=Belarus, Ind=India, Slo=Slovenia, Bul=Bulgaria, Chi=China, Tur=Turkey, Lit=Lithuania, Lat=Latvia, Est=Estonia, Ukr=Ukraine, Rus=Russia, Per=Peru, Ven=Venezuela, Uru=Uruguay, Phi=Philippines, Mol=Moldova, Geo=Georgia, Arm=Armenia, Aze=Azerbaijan, DRe=Dominican Republic, Ban=Bangladesh, Col=Columbia, Ser=Serbia, Mon=Montenegro, Mac=Macedonia, Cro=Croatia, Bos=Bosnia.

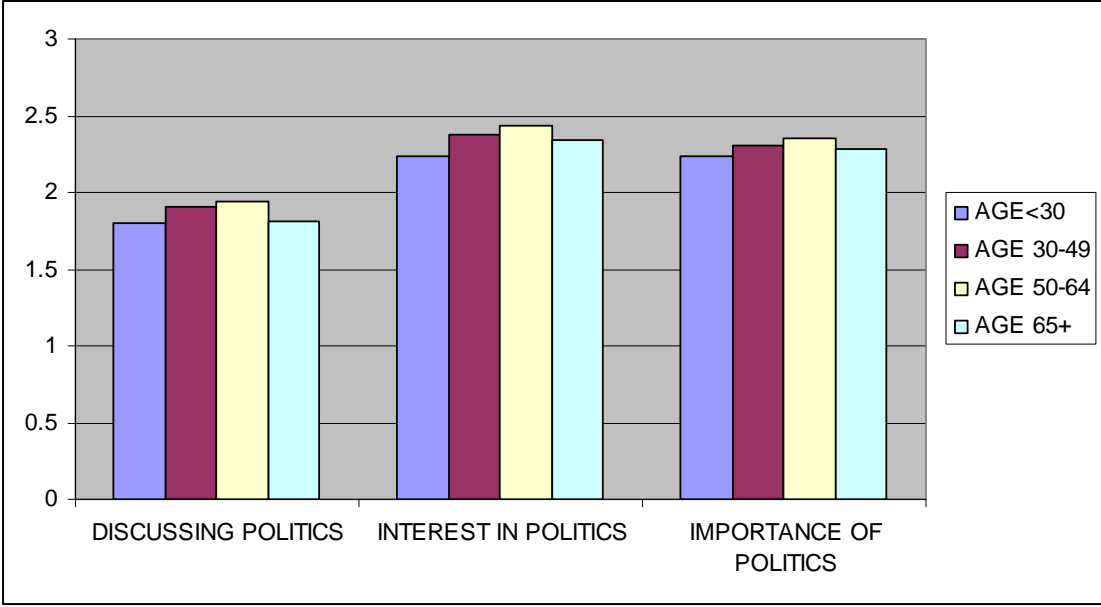


Figure A2. Age and political interest

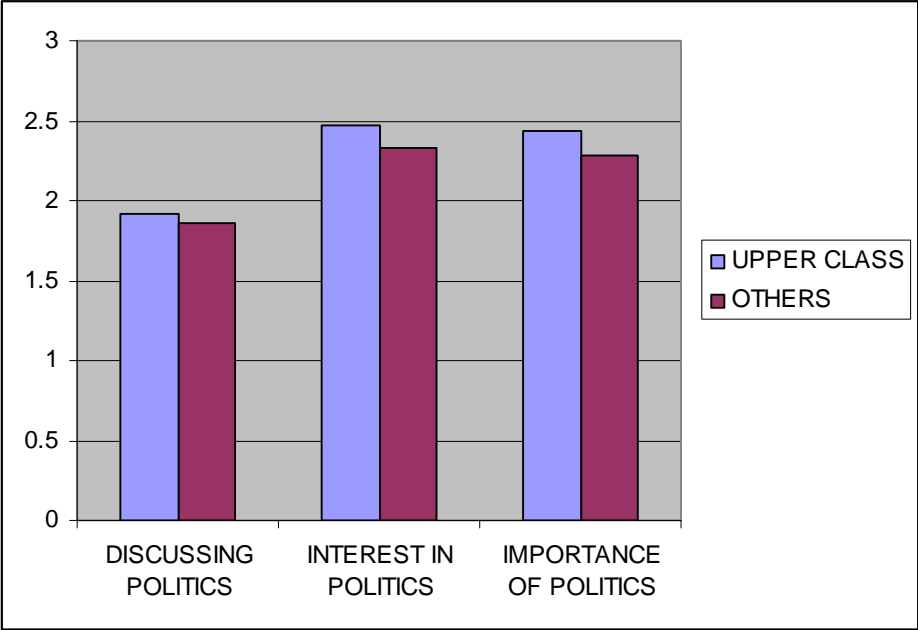


Figure A3. *Economic class and political interest*

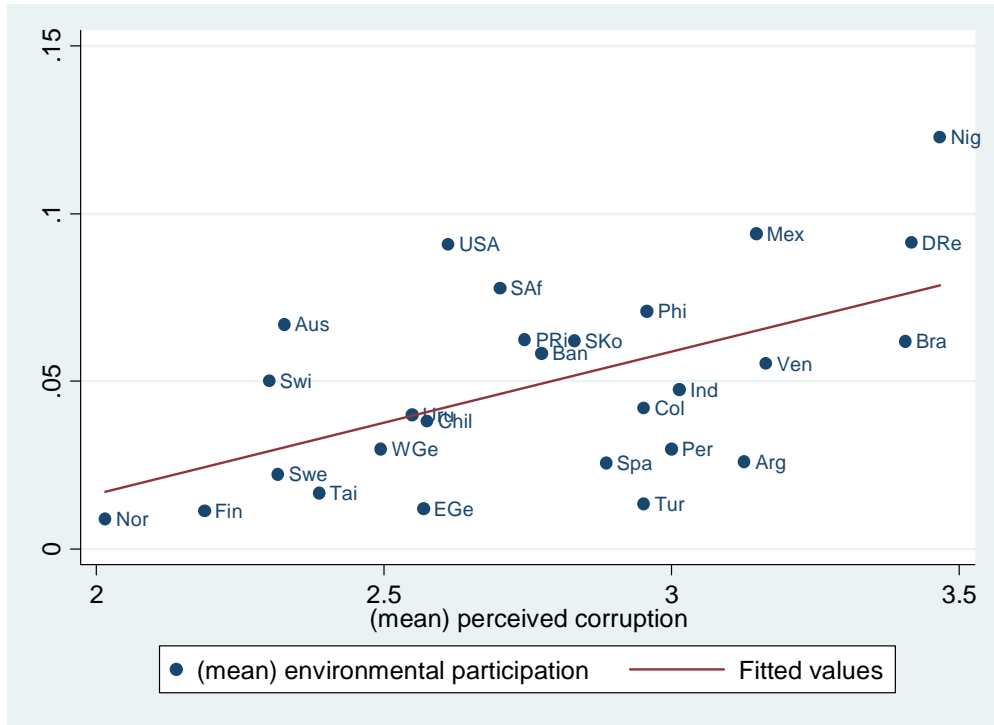


Figure A4. *Corruption and environmental participation*

Notes: Pearson  $r=0.552$ . Transition countries are excluded.



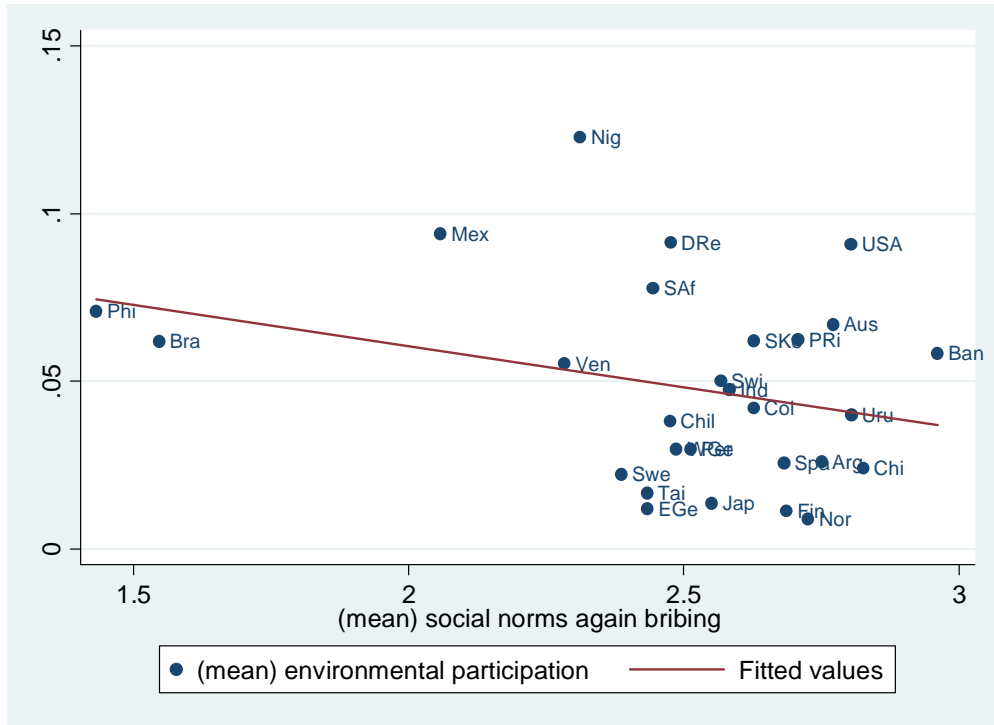


Figure A5. *Environmental participation and social norms against bribing*

Notes: Pearson  $r = -0.288$ . Transition countries are excluded.