

# Measuring the welfare effects of forests: an application of the travel cost model

Martha Rogers

The Nature Conservancy, Arlington, VA, USA.  
Email address: [martha.rogers@tnc.org](mailto:martha.rogers@tnc.org)

**ONLINE APPENDIX**

**Table A1.** Household firewood use summary statistics

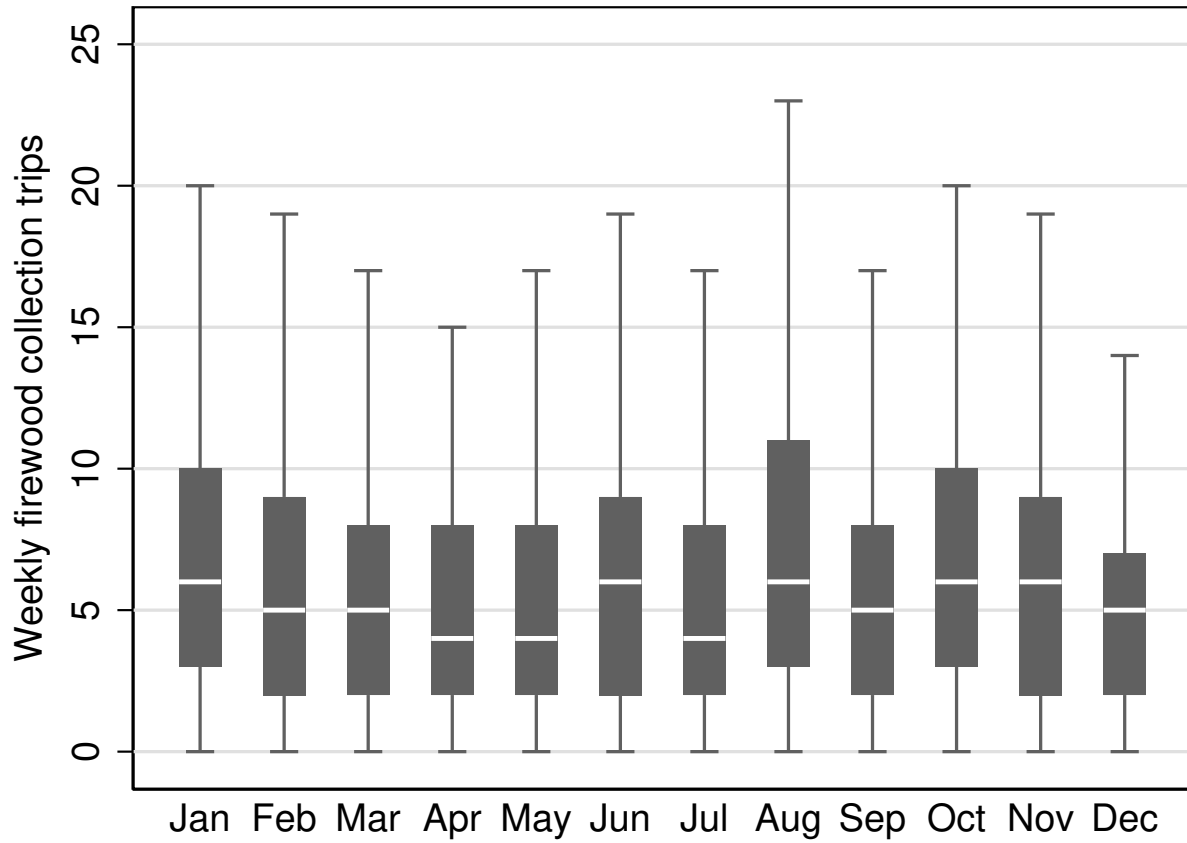
	Survey round				Total
	1	2	3	4	
Household uses firewood	0.97 (0.16)	0.98 (0.14)	0.98 (0.13)	0.98 (0.14)	0.98 (0.14)
Household collects firewood	0.95 (0.23)	0.92 (0.28)	0.90 (0.30)	0.89 (0.32)	0.91 (0.28)
Household has firewood crops	0.16 (0.37)	0.27 (0.44)	0.22 (0.41)	0.24 (0.43)	0.22 (0.42)
Household has income from firewood sales	0.00 (0.00)	0.00 (0.00)	0.00 (0.00)	0.00 (0.00)	0.00 (0.00)
Household has firewood in stock	0.02 (0.14)	0.04 (0.19)	0.03 (0.18)	0.03 (0.17)	0.03 (0.17)
Observations	767	810	805	776	3158

*Note:* Standard deviation in parentheses.



**Figure A1.** Kagera Region, Tanzania

*Source:* Ainsworth (2004). Kagera region highlighted in red.



**Figure A2.** Weekly household firewood collection trips by month of interview

*Note:* Median value represented by horizontal white line, length of bar indicates inter-quartile range, and whiskers indicate 1.5 times the inter-quartile range.