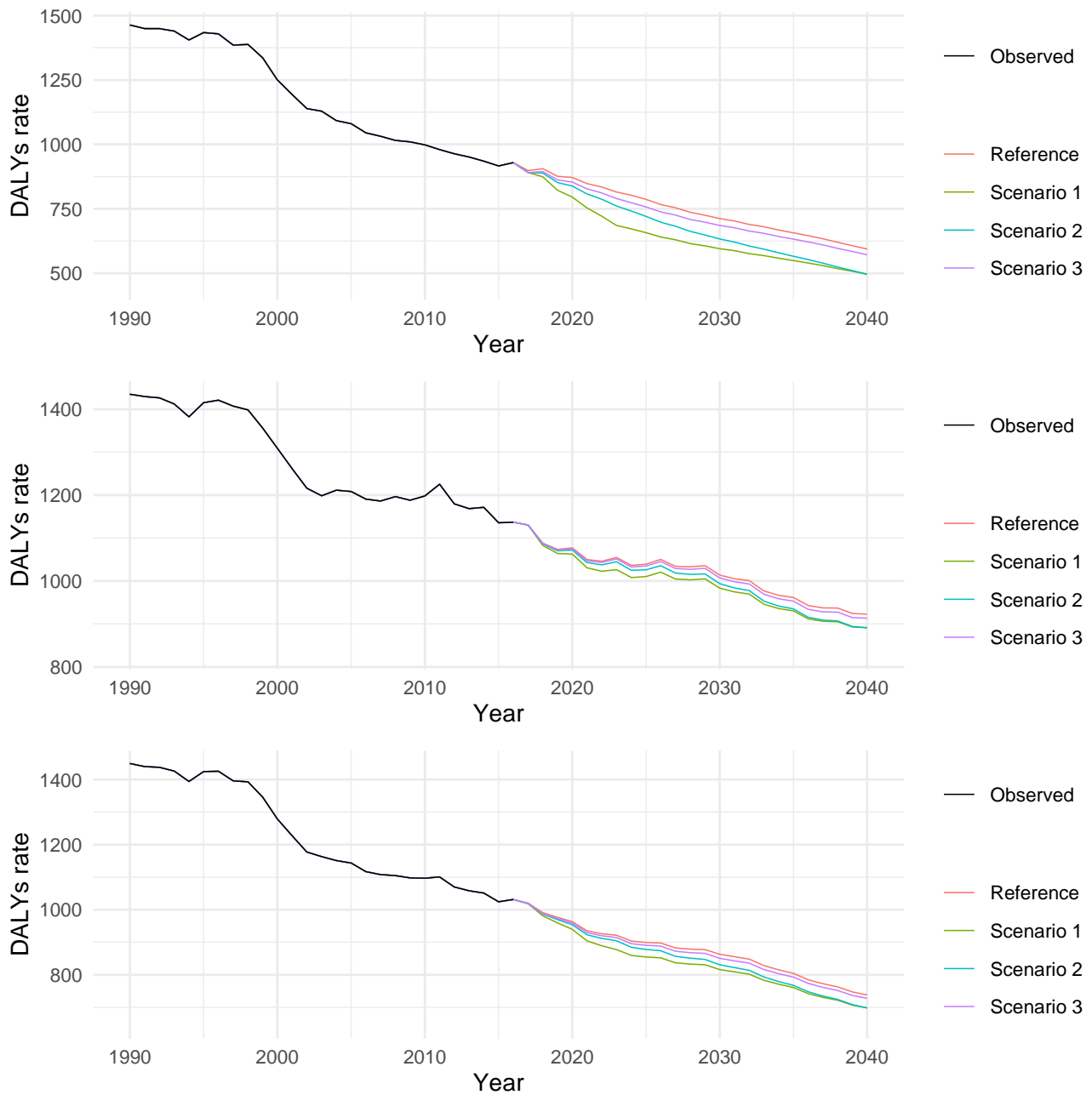
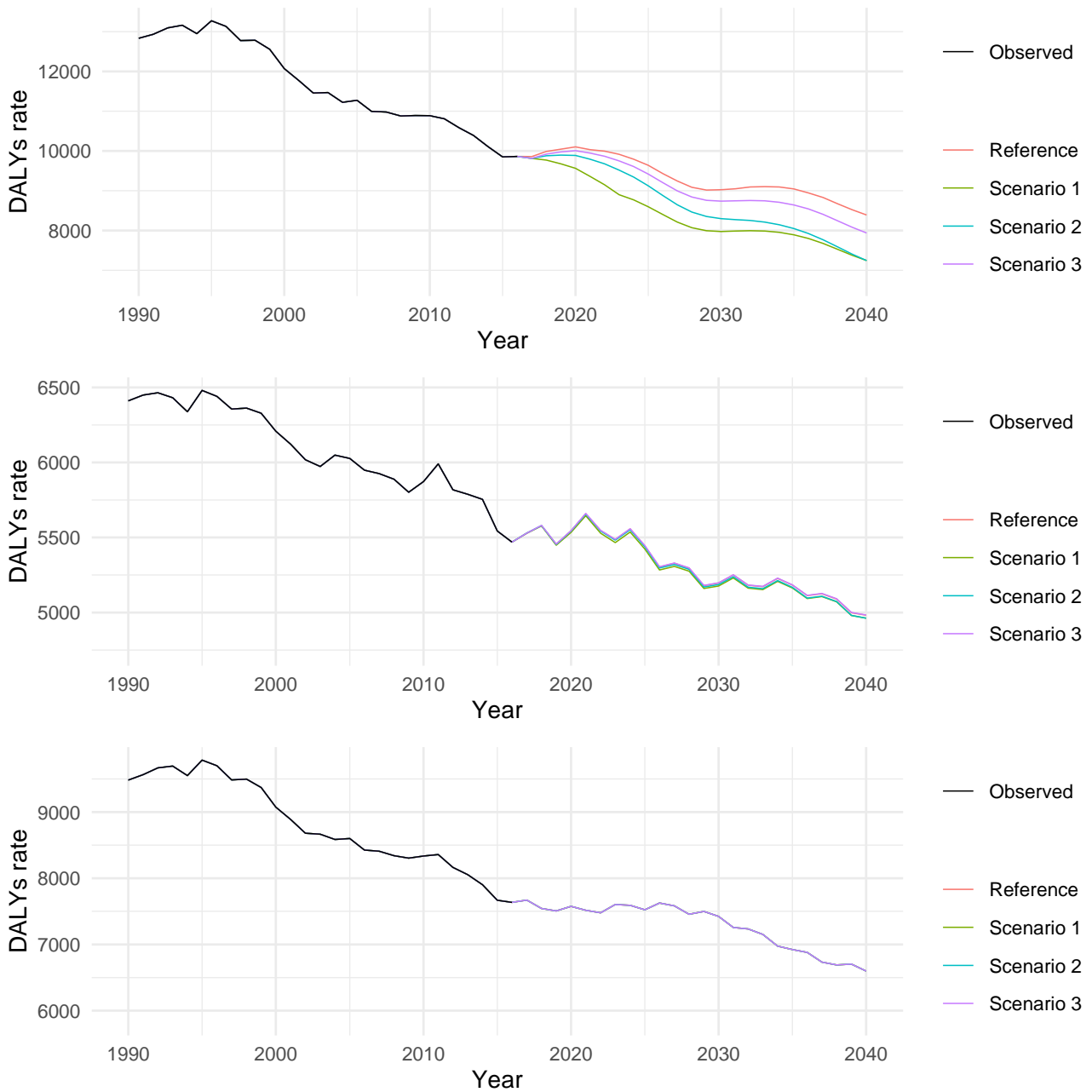


1 **Supplementary figure 1: Observed and projected 20–49 age group DALYs rate (per 100,000) for Neoplasms**  
2 **for reference and three alternative scenarios, 1990–2040: male, female and both sexes combined**



3  
4 1: best scenario; 2: moderate scenario; 3: constant scenario

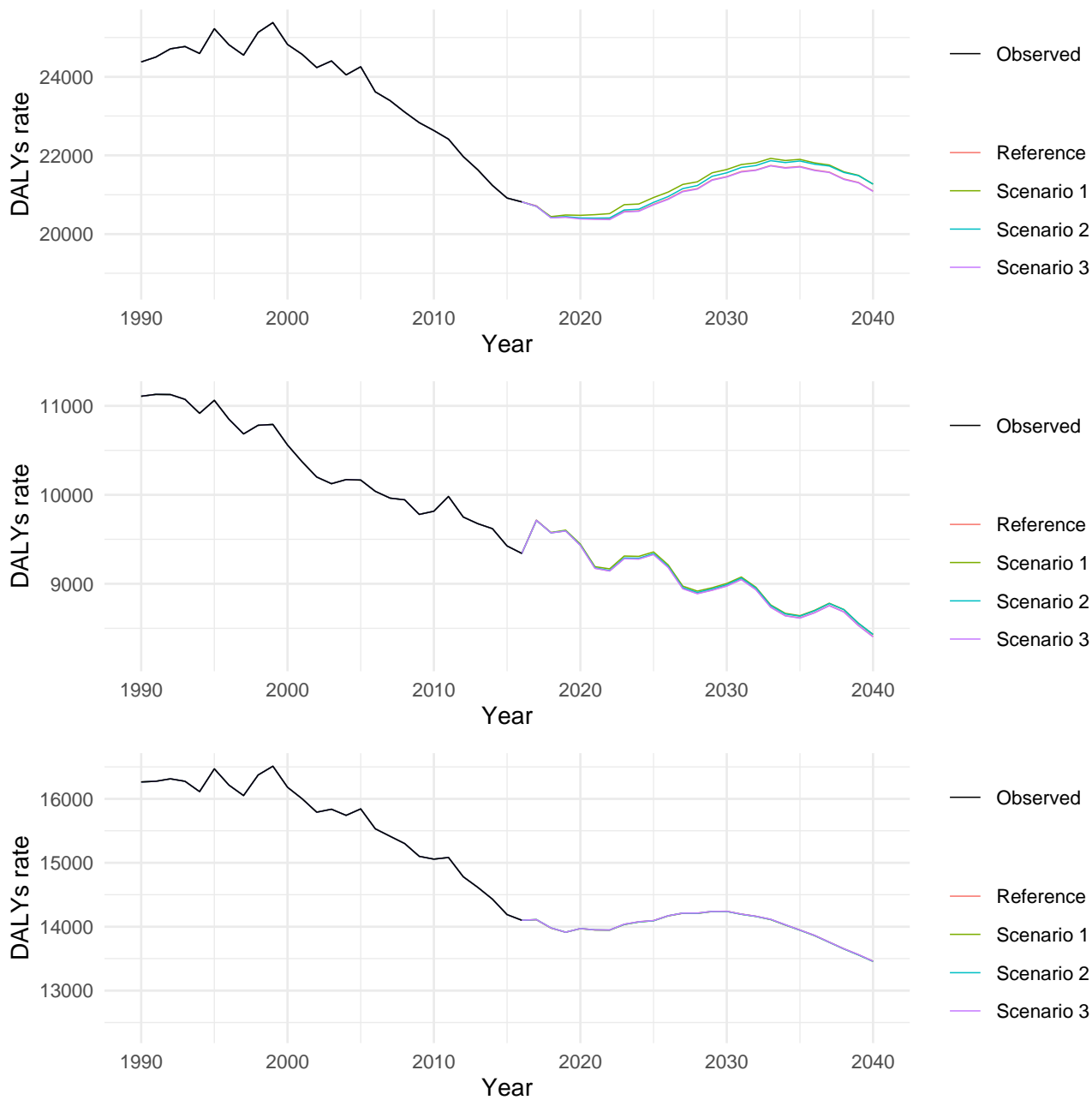
5 **Supplementary figure 2: Observed and projected 50–69 age group DALYs rate (per 100,000) for Neoplasms**  
 6 **for reference and three alternative scenarios, 1990–2040: male, female and both sexes combined**



7

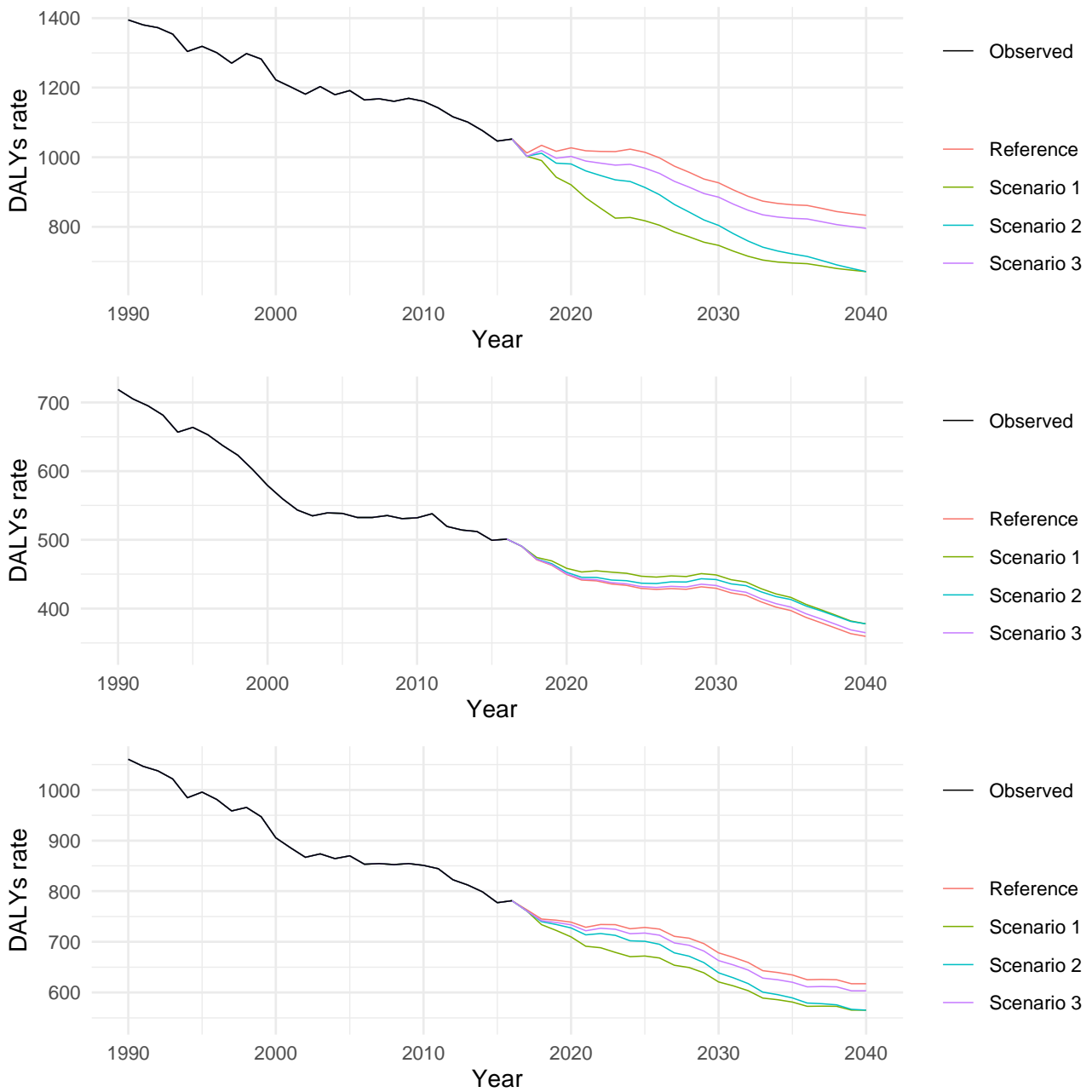
8 1: best scenario; 2: moderate scenario; 3: constant scenario

9 **Supplementary figure 3: Observed and projected ≥70 age group DALYs rate (per 100,000) for Neoplasms**  
 10 **for reference and three alternative scenarios, 1990–2040: male, female and both sexes combined**



11  
 12 1: best scenario; 2: moderate scenario; 3: constant scenario

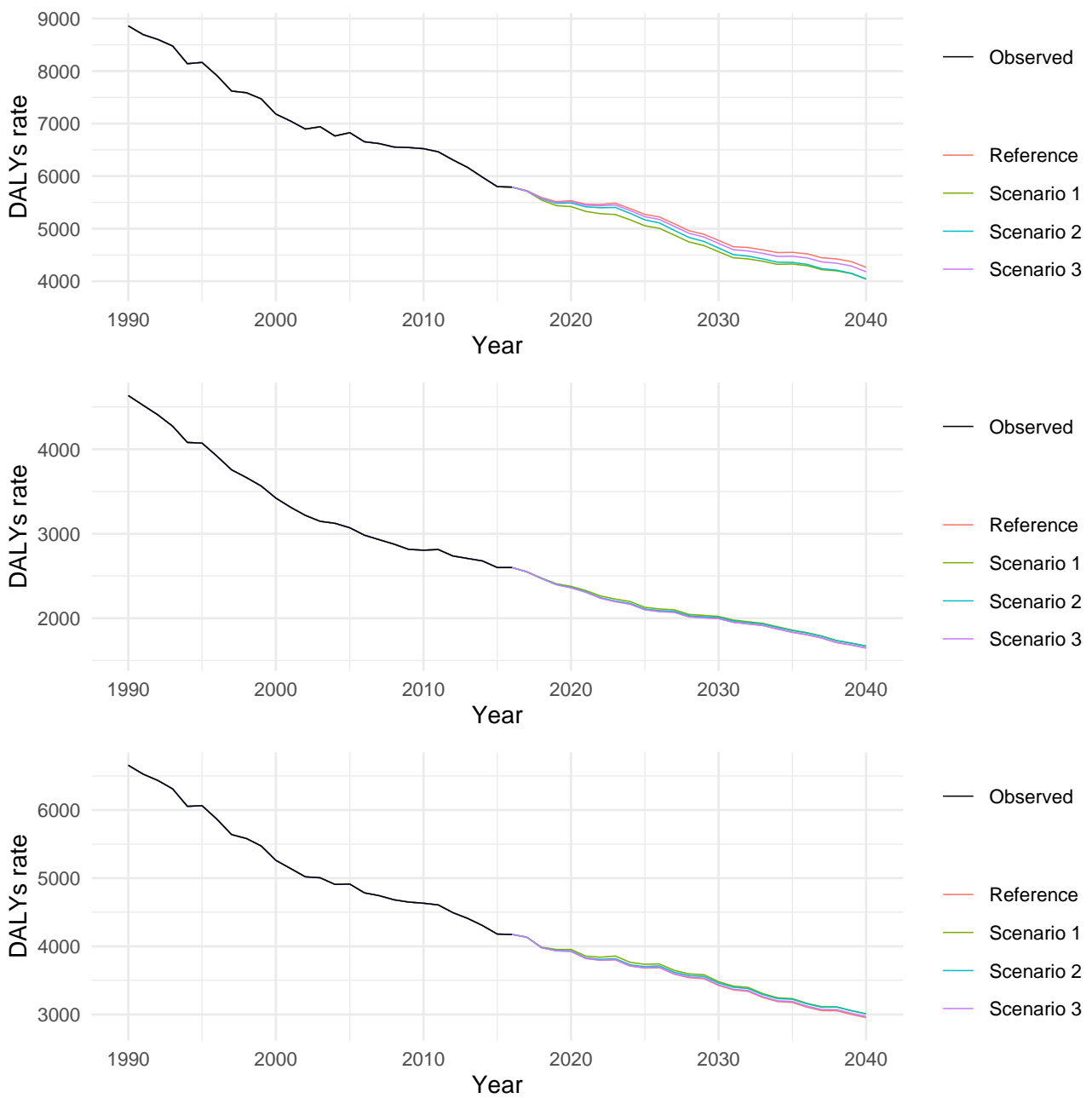
13 **Supplementary figure 4: Observed and projected 20–49 age group DALYs rate (per 100,000) for**  
 14 **cardiovascular diseases for reference and three alternative scenarios, 1990–2040: male, female and both**  
 15 **sexes combined**



16

17 1: best scenario; 2: moderate scenario; 3: constant scenario

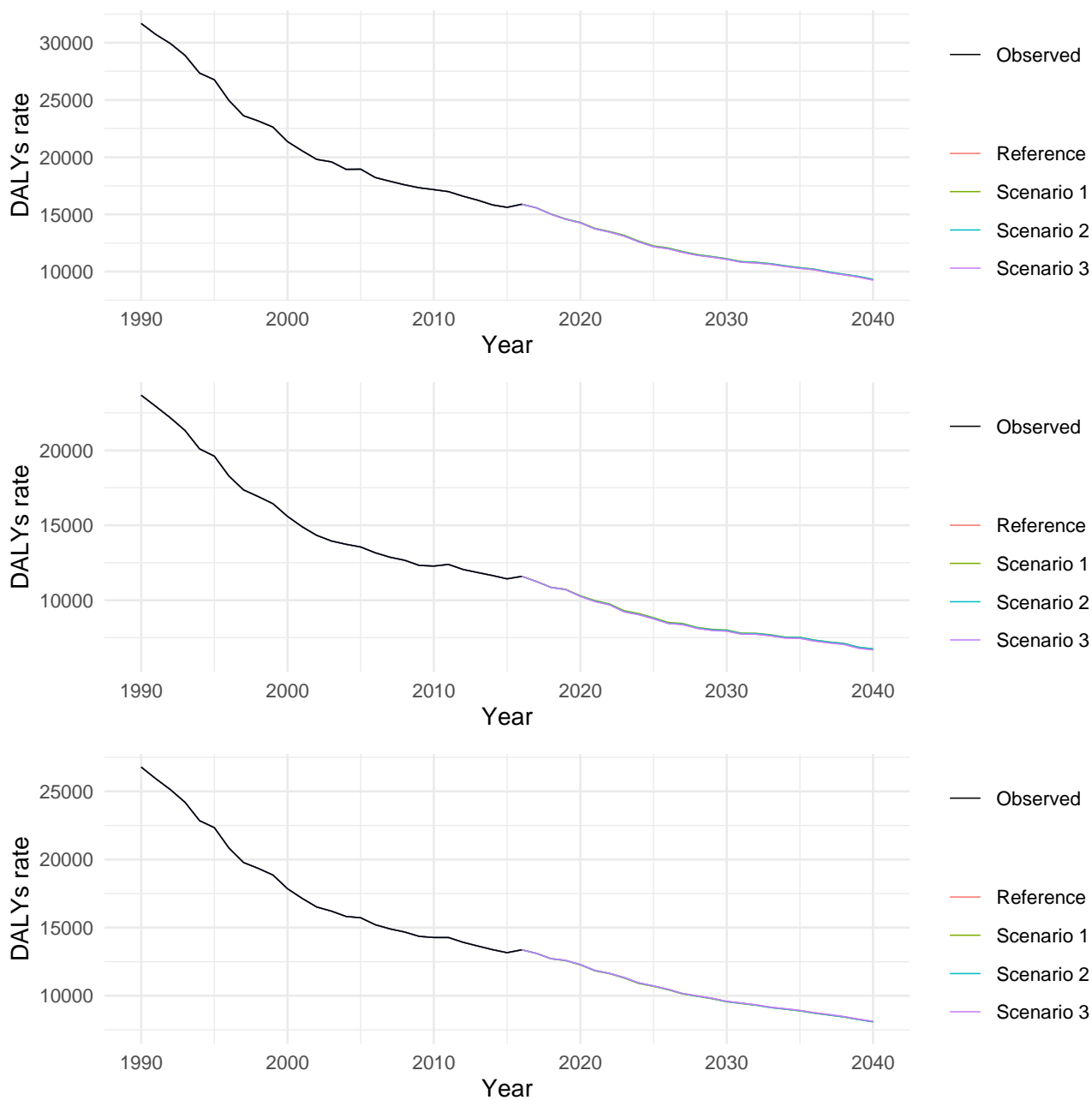
18 **Supplementary figure 5: Observed and projected 50–69 age group DALYs rate (per 100,000) for**  
 19 **cardiovascular diseases for reference and three alternative scenarios, 1990–2040: male, female and both**  
 20 **sexes combined**



21

22 1: best scenario; 2: moderate scenario; 3: constant scenario

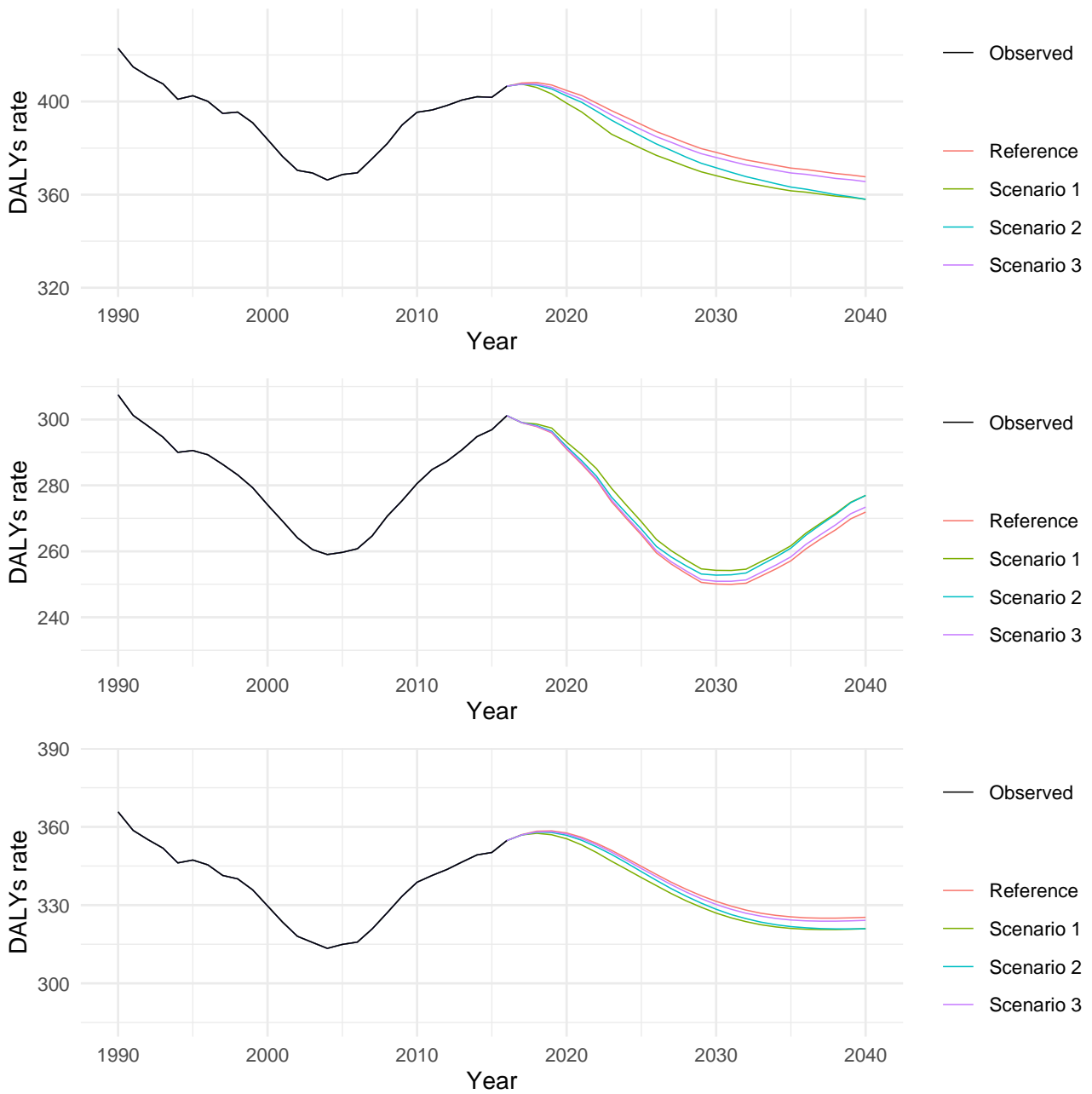
23 **Supplementary figure 6: Observed and projected ≥70 age group DALYs rate (per 100,000) for**  
 24 **cardiovascular diseases for reference and three alternative scenarios, 1990–2040: male, female and both**  
 25 **sexes combined**



26

27 1: best scenario; 2: moderate scenario; 3: constant scenario

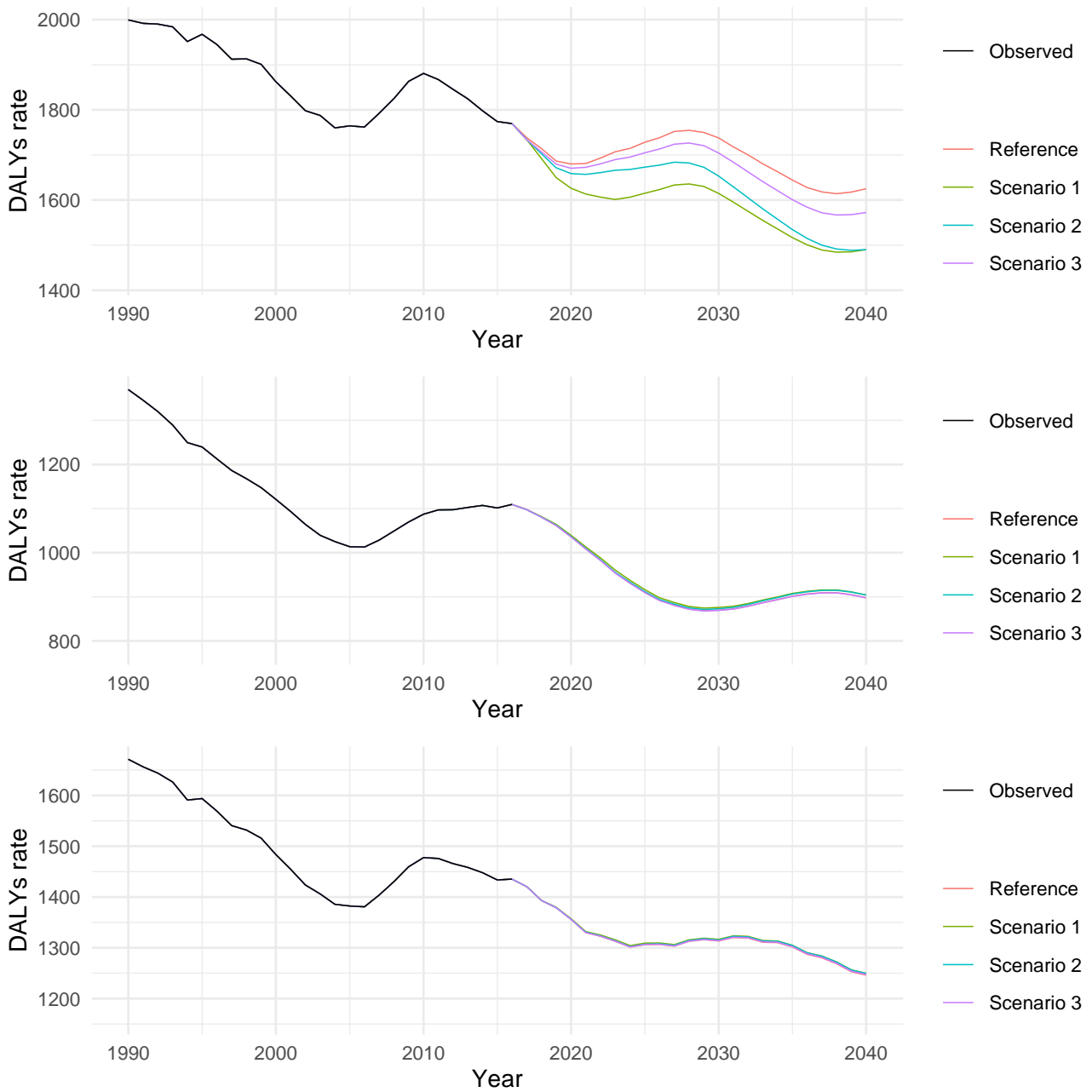
28 **Supplementary figure 7: Observed and projected 20–49 age group DALYs rate (per 100,000) for diabetes**  
 29 **and kidney disease for reference and three alternative scenarios, 1990–2040: male, female and both sexes**  
 30 **combined**



31

32 1: best scenario; 2: moderate scenario; 3: constant scenario

33 **Supplementary figure 8: Observed and projected 50–69 age group DALYs rate (per 100,000) for diabetes**  
 34 **and kidney disease for reference and three alternative scenarios, 1990–2040: male, female and both sexes**  
 35 **combined**

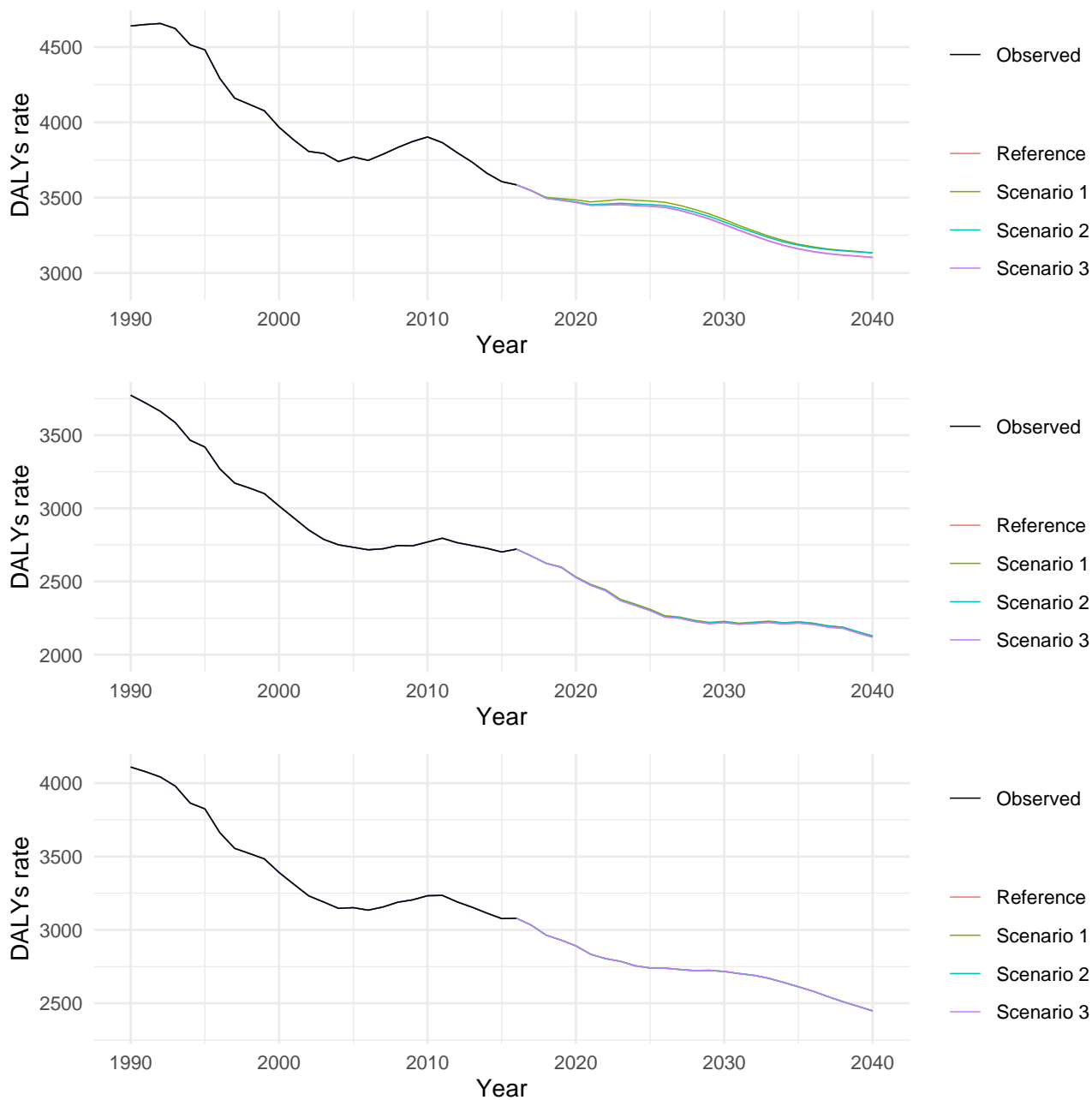


36

37 1: best scenario; 2: moderate scenario; 3: constant scenario



38 **Supplementary figure 9: Observed and projected ≥70 age group DALYs rate (per 100,000) for diabetes and**  
 39 **kidney disease for reference and three alternative scenarios, 1990–2040: male, female and both sexes**  
 40 **combined**



41

42 1: best scenario; 2: moderate scenario; 3: constant scenario