

Supplementary material

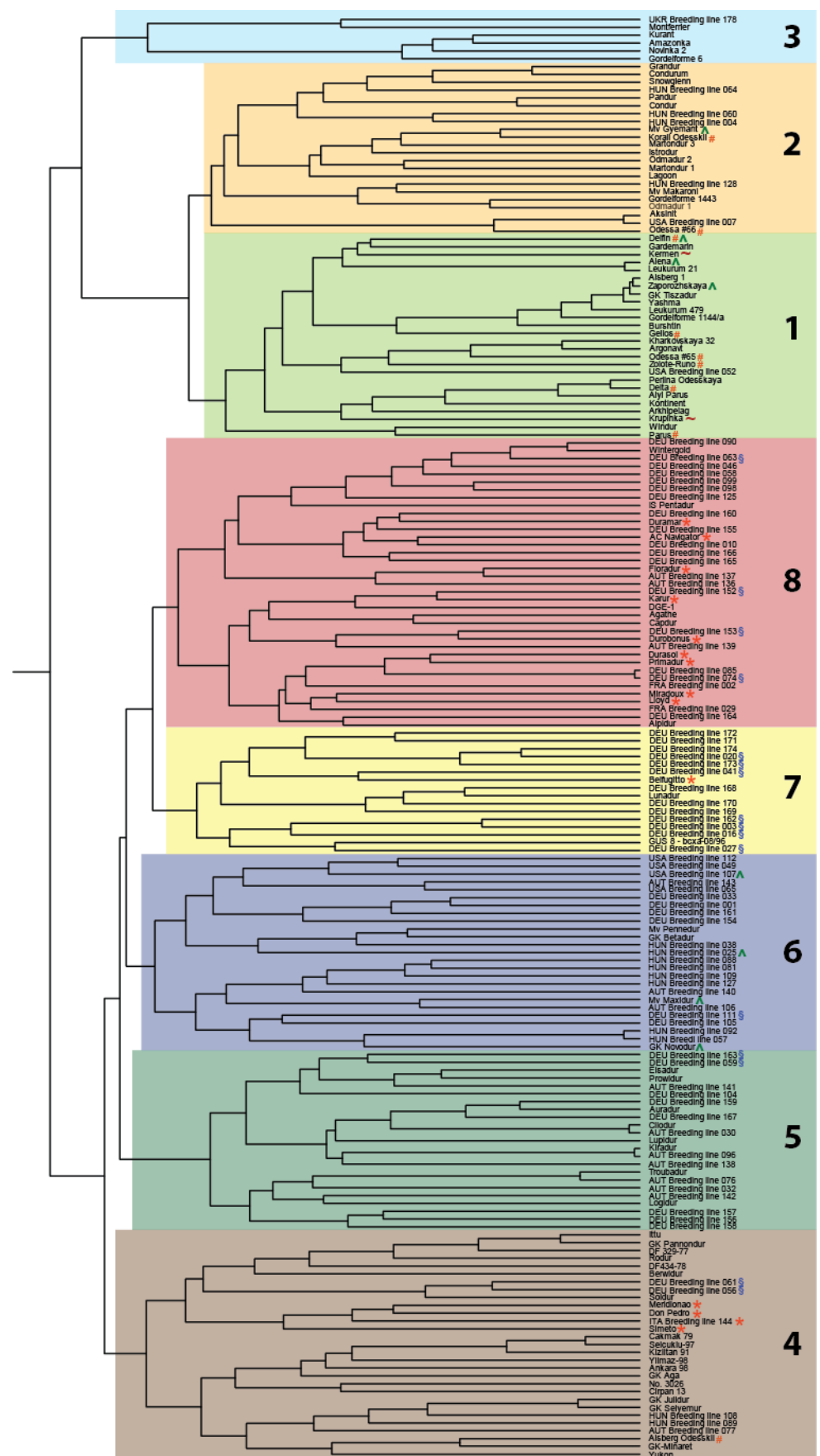


Figure S1: Population structure and genetic relatedness assessed in the diverse durum wheat panel. Dendrogram based on the genetic distances among all lines (spring durum lines are indicated by a star; population groups (dendrogram clades) are indicated by numbers; AUT = Austria, DEU = Germany, FRA = France, UKR = Ukraine, USA = Unites States; important founder lines are indicated as ‘Eurodur’ = §, ‘Hordeiforme 1/4’ = #, ‘Parus’ = ^, ‘Alyi Parus’ = ~).

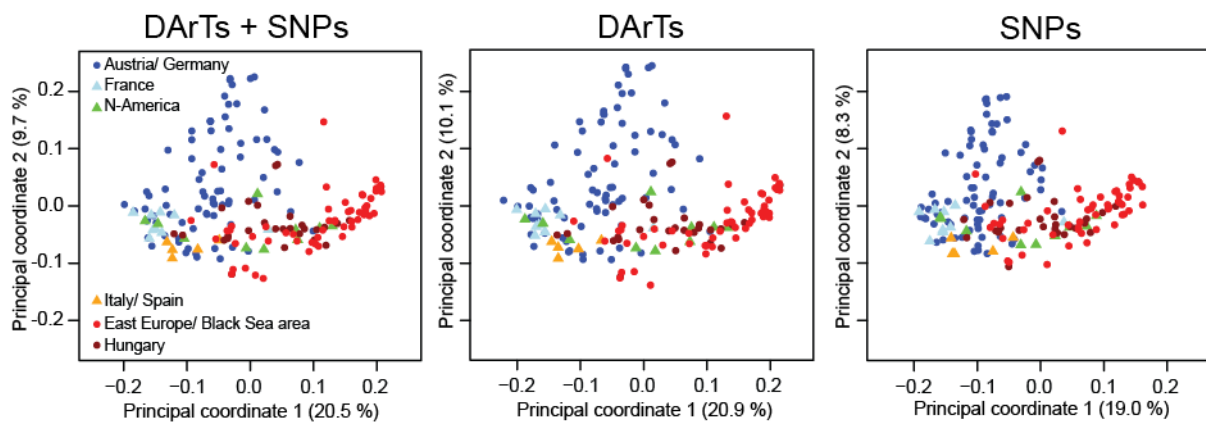


Figure S2: Principal coordinate analysis based on the Rogers’ distances among all genotypes for single nucleotide polymorphism (SNP) markers, Diversity Arrays Technology (DArT) markers and the combination of DArT and SNP markers. Percentages in parentheses refer to the proportion of variance explained by the principal coordinate, lines are colored according to their country of origin.