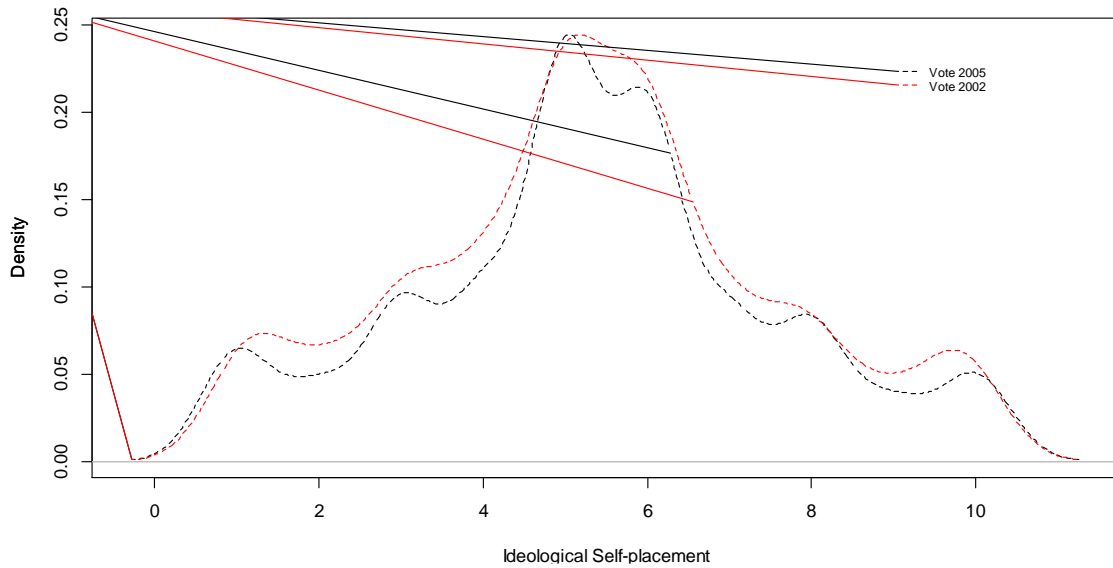
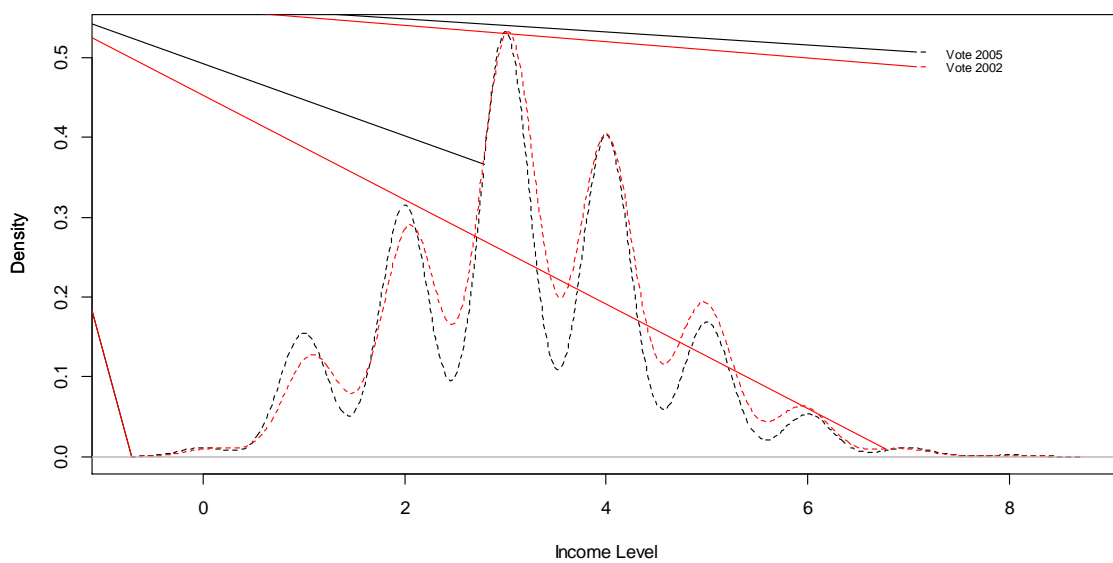


### Appendix

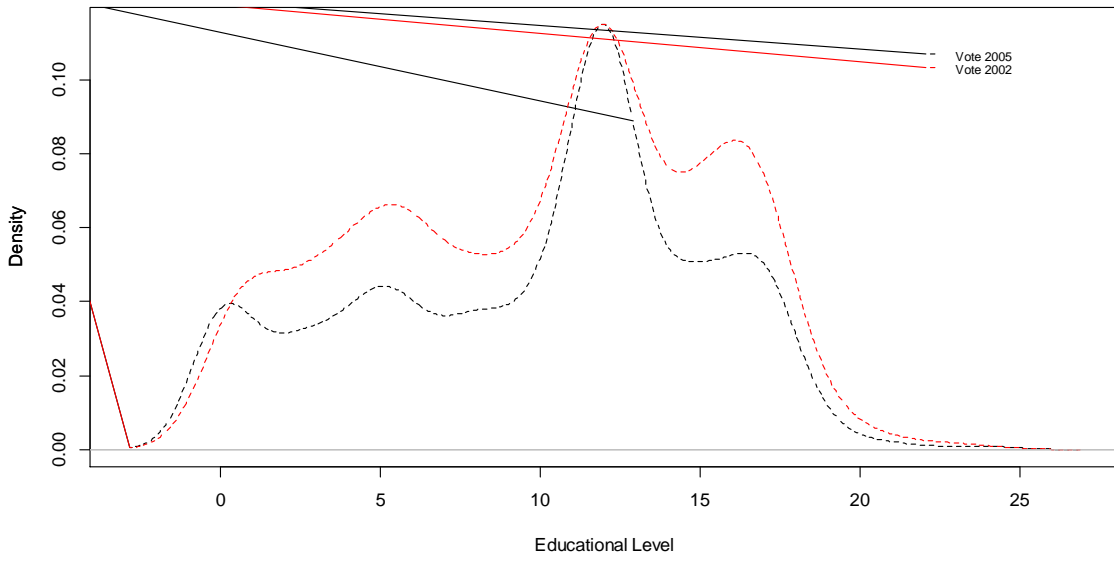
Ideological self-placement of respondents in 2002 and 2005, according to LAPOP



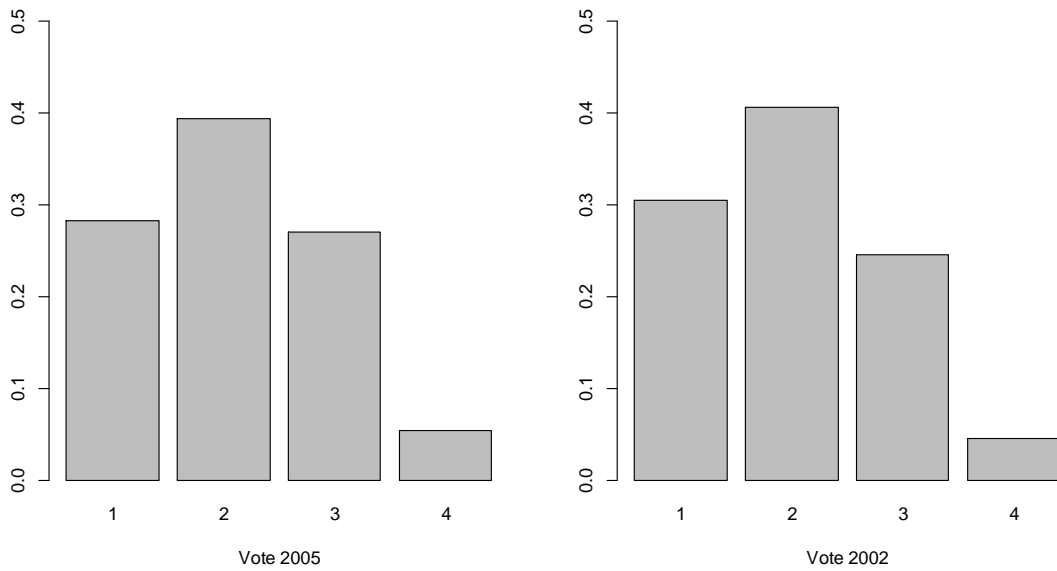
Income level of respondents in 2002 and 2005, according to LAPOP



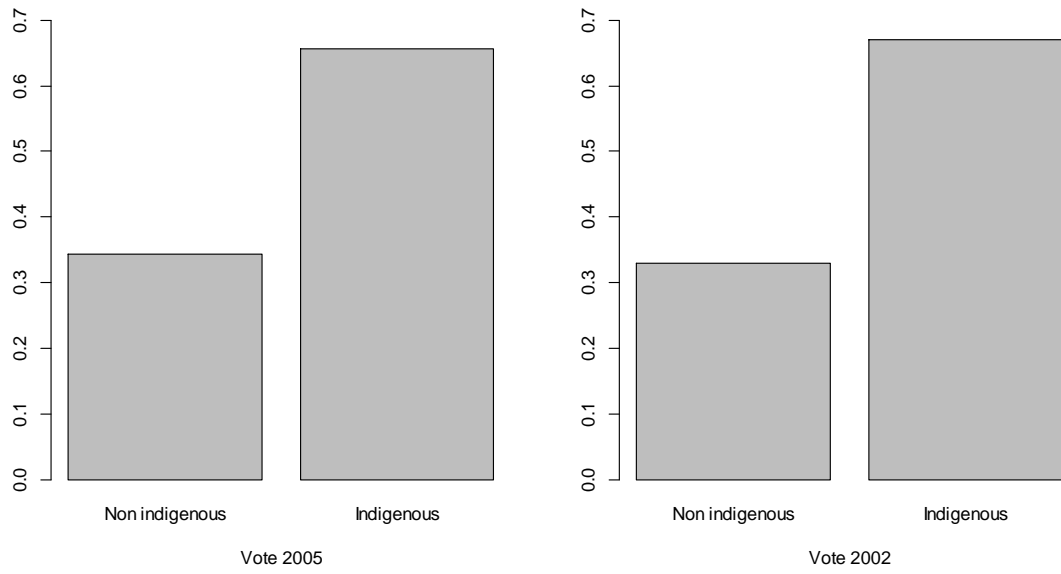
### Educational level of respondents in 2002 and 2005, according to LAPOP



### Perception of corruption among respondents in 2002 and 2005, according to LAPOP



### Indigenous self-identification among respondents in 2002 and 2005, according to LAPOP



### Region of residence among respondents in 2002 and 2005, according to LAPOP

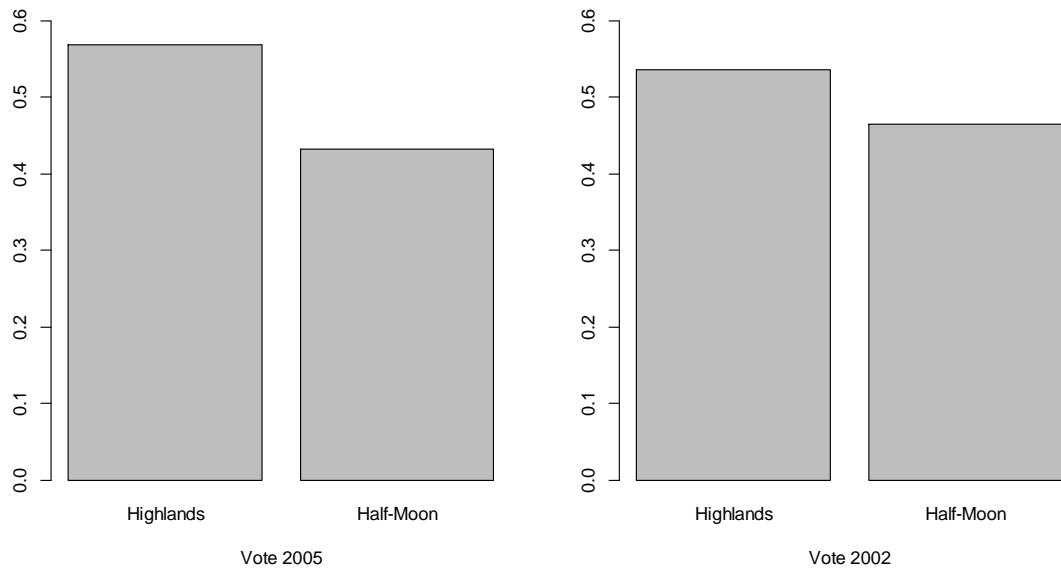
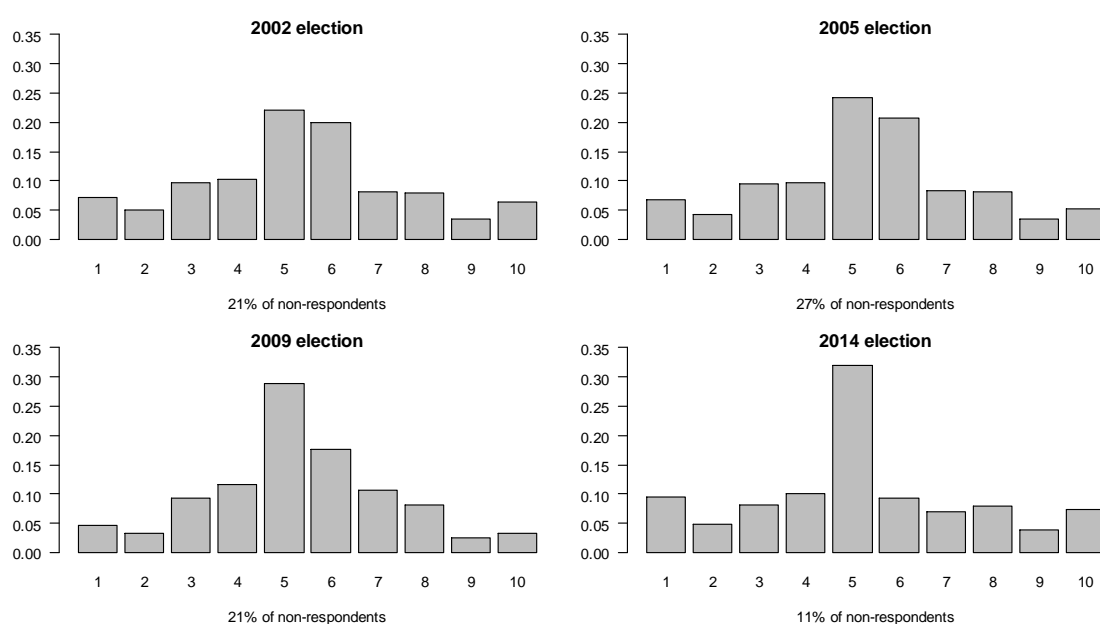


Table: Determinants of the vote for the MAS 2002-2014, logit models (Gov. evaluation not included)

Dependent Variable: vote for the MAS	2002	2005	2009	2014
Ideology	-0.286*** (0.048)	-0.272*** (0.034)	-0.450*** (0.039)	-0.142*** (0.035)
Indigenous	0.814** (0.262)	0.670*** (0.153)	0.395* (0.159)	0.622*** (0.173)
Region	-1.243*** (0.235)	-1.345*** (0.151)	-0.878*** (0.155)	-0.169 (0.178)
Income	-0.129 (0.085)	-0.111 (0.062)	-0.058 (0.042)	0.004 (0.018)
Education	-0.018 (0.023)	-0.051** (0.016)	-0.097*** (0.017)	-0.109*** (0.022)
Corruption	0.361** (0.118)	-0.024 (0.085)	-0.096 (0.091)	-0.581*** (0.096)
Constant	1.08	2.73	4.69	4.69
N	852	1123	1351	766
AIC	733	1267	1387	862
BIC	766	1302	1423	894
Pseudo R2	0.41	0.46	0.47	0.32

Robust standard errors in parentheses. <sup>+</sup> Significant at 0.1; \* 0.05; \*\* 0.01; \*\*\* 0.001

Ideological self-identification of Bolivian voters between 2002 and 2014 elections, and % of non-respondents



Ideological self-identification in advanced and developing democracies, according to CSES, Modules 1 to 4

