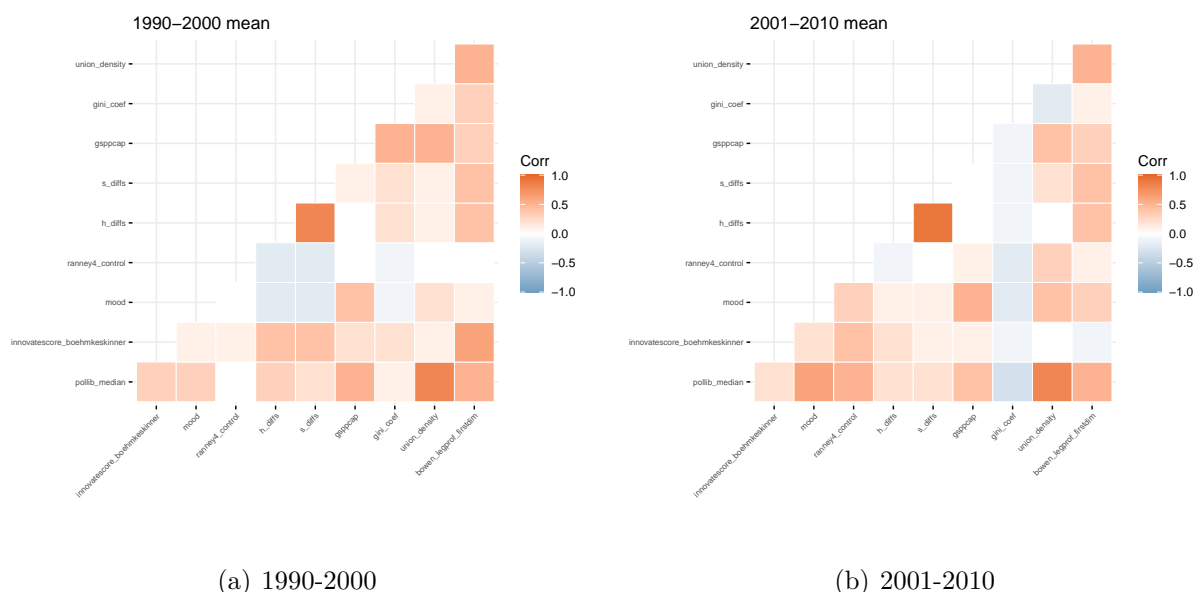


A1 Online Appendix

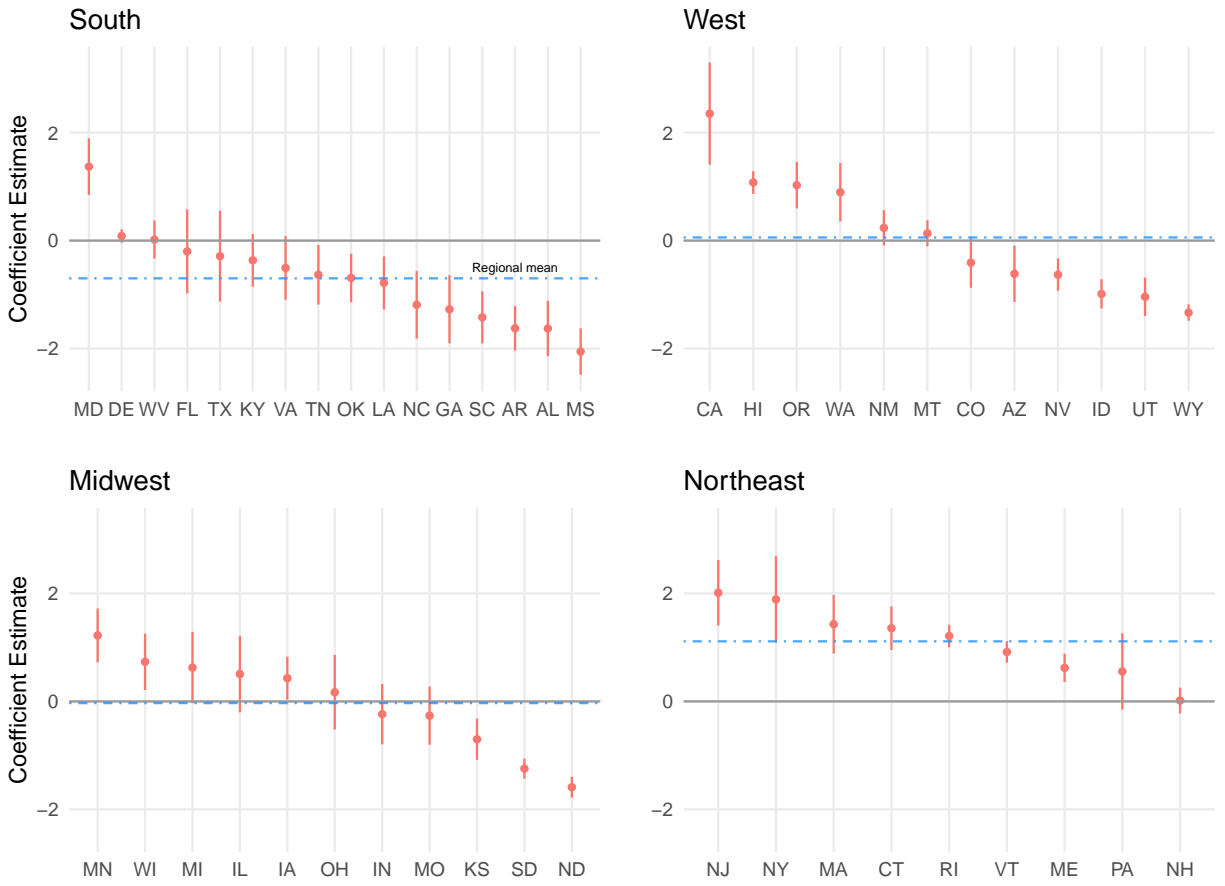
Figure A1 displays individual decade-level correlations between variables of interest. It shows substantial variation in the degree to which some variables are correlated with each other depending on the time period of interest. These figures include the values used to create Figure 4 above.



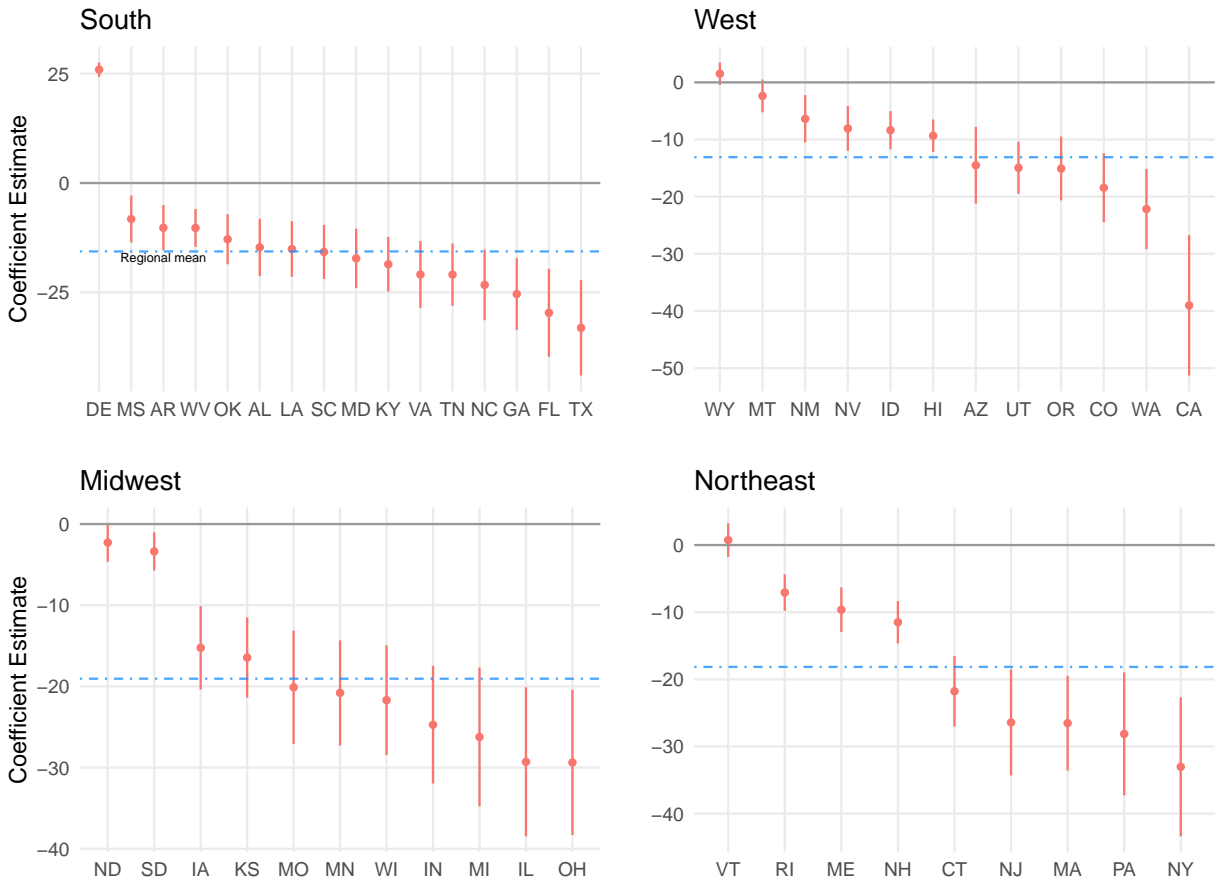
Appendix Figure A1: Maps of Policy Liberalism and Citizen Ideology

Note: This figure plots the bivariate correlations between variables of interest separated by decade. The difference in these correlations across decade is used to create Figure 4 in the manuscript.

Figures A2 and A3 display the coefficients of state fixed effects in the regressions in Table A1 below. The states are then separated into their regions. The dashed line in each figure is the regional mean. Tables A1, A2 and A4 display the regressions used to create Figure 7 in the manuscript. Within each table of results, the first three columns include year fixed effects, the middle three include year and region fixed effects, and the final three include year and state fixed effects. Figure A4 plots the predicted values from regressions using controls and no controls across the range of state policy mood.

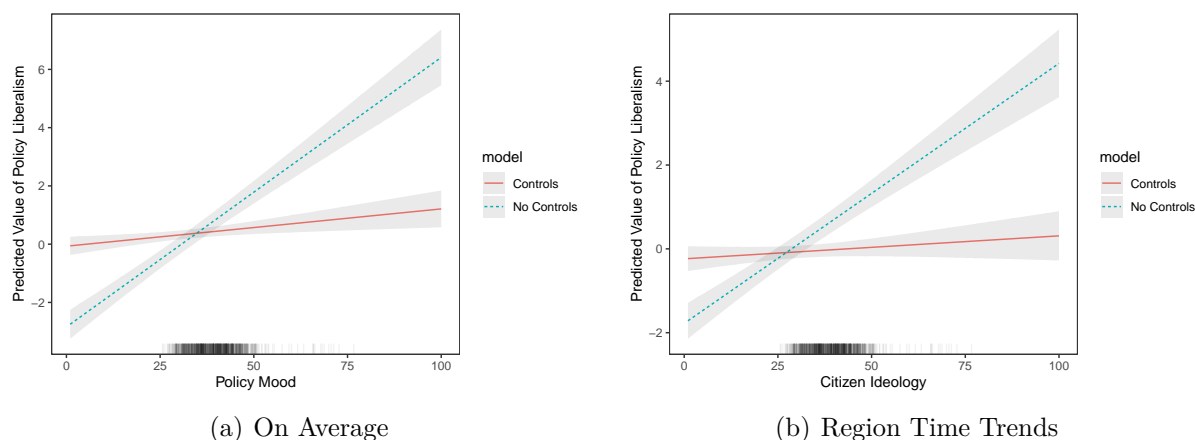


Appendix Figure A2: Policy Liberalism by State and Region



Appendix Figure A3: Policy Mood by State and Region

Tables A1 through A4 display the full results used to create Figure 7 in the manuscript.



Appendix Figure A4: Predicted Values from Regressions

Note: This figure plots predicted values from regressions presented in full in the appendix. The figure on the left is the predicted results from models with and without controls. The figure on the right are predicted results from a regression with controls and region fixed effects, plotting individual predictions by region. All models include year fixed effects.

Tables A5 and A6 use an alternative measure of citizen ideology from Caughey and Warshaw (2018). This measure is broken into economic and social quantities. These tables show similar trends as the models using the measure from Enns and Koch (2013): the inclusion of controls attenuates the coefficient on citizen ideology, and specifications with state fixed effects have much smaller estimated coefficients, suggesting within-state variation is limited.

Tables A7 and A8 employ alternative explanatory variables. In the first table, we predict policy liberalism using the Erikson et al. (1993) measure of weighted policy ideology. In the second, we use the Berry, Fording and Hanson (1998) measure of citizen ideology. Figure A5 plots the coefficients across model specifications for each independent variable. The substantive findings are the same as those in the main text, with substantial attenuation in coefficient size once controls and state fixed effects are included.

Finally, we estimate the same model specifications as above using a policy adoption binary variable as an outcome: the adoption of open carry laws (Caughey and Warshaw

Appendix Table A1: OLS Regressions: Policy Mood

	(1)	(2)	(3)	(4)	(5)	(6)	(7)	(8)	(9)
Policy Mood	0.093** (0.039)	0.074*** (0.026)	0.013 (0.011)	0.066*** (0.014)	0.048*** (0.013)	0.0002 (0.010)	0.013*** (0.005)	0.009** (0.004)	0.002 (0.004)
Partisan Control		0.757*** (0.238)	0.629*** (0.152)		0.937*** (0.200)	0.464*** (0.150)		0.223*** (0.043)	0.202*** (0.046)
Leg. Professionalism		0.270*** (0.061)	0.092* (0.051)		0.196*** (0.043)	0.100* (0.055)		0.024 (0.023)	0.016 (0.022)
House Polarization		0.297 (0.460)	0.927*** (0.226)		0.459 (0.425)	1.397*** (0.210)		-0.270** (0.118)	-0.204* (0.113)
Senate Polarization		0.038 (0.408)	-0.506** (0.200)		-0.171 (0.275)	-0.605*** (0.180)		-0.012 (0.071)	-0.036 (0.066)
Union Density			0.077*** (0.015)			0.100*** (0.015)			0.001 (0.009)
Gini Coef.			1.026 (2.031)			-0.555 (1.952)			0.327 (0.884)
State CPI			6.854*** (1.014)			5.234*** (0.992)			1.392*** (0.447)
GSP Per Capita			-0.138 (0.447)			0.079 (0.370)			0.152 (0.311)
Population			-0.112 (0.083)			-0.239*** (0.071)			-0.222 (0.287)
Fixed Effects	Year	Year	Year	Year + Region	Year + Region	Year + Region	Year + State	Year + State	Year + State
N	1,000	687	687	1,000	687	687	1,000	687	687
R ²	0.161	0.425	0.827	0.521	0.712	0.868	0.978	0.989	0.989

*p < .1; **p < .05; ***p < .01

Note: All variables are at the state-year level. All models include year fixed effects. Control variables are lagged. Robust standard errors are clustered by state.

Appendix Table A2: OLS Regressions: Lagged Policy Mood (t-1)

	(1)	(2)	(3)	(4)	(5)	(6)	(7)	(8)	(9)
Policy Mood (t-1)	0.093** (0.039)	0.074*** (0.026)	0.013 (0.011)	0.066*** (0.014)	0.048*** (0.013)	0.0002 (0.010)	0.013*** (0.005)	0.009** (0.004)	0.002 (0.004)
Partisan Control		0.757*** (0.238)	0.629*** (0.152)		0.937*** (0.200)	0.464*** (0.150)		0.223*** (0.043)	0.202*** (0.046)
Leg. Professionalism		0.270*** (0.061)	0.092* (0.051)		0.196*** (0.043)	0.100* (0.055)		0.024 (0.023)	0.016 (0.022)
House Polarization		0.297 (0.460)	0.927*** (0.226)		0.459 (0.425)	1.397*** (0.210)		-0.270** (0.118)	-0.204* (0.113)
Senate Polarization		0.038 (0.408)	-0.506** (0.200)		-0.171 (0.275)	-0.605*** (0.180)		-0.012 (0.071)	-0.036 (0.066)
Union Density			0.077*** (0.015)			0.100*** (0.015)			0.001 (0.009)
Gini Coef.			1.026 (2.031)			-0.555 (1.952)			0.327 (0.884)
State CPI			6.854*** (1.014)			5.234*** (0.992)			1.392*** (0.447)
GSP Per Capita			-0.138 (0.447)			0.079 (0.370)			0.152 (0.311)
Population			-0.112 (0.083)			-0.239*** (0.071)			-0.222 (0.287)
Fixed Effects	Year	Year	Year	Year + Region	Year + Region	Year + Region	Year + State	Year + State	Year + State
N	1,000	687	687	1,000	687	687	1,000	687	687
R ²	0.161	0.425	0.827	0.521	0.712	0.868	0.978	0.989	0.989

*p < .1; **p < .05; ***p < .01

Note: All variables are at the state-year level. All models include year fixed effects. Control variables are lagged. Robust standard errors are clustered by state.

Appendix Table A3: OLS Regressions: Lagged Policy Mood (t-2)

	(1)	(2)	(3)	(4)	(5)	(6)	(7)	(8)	(9)
Policy Mood (t-2)	0.096** (0.042)	0.077*** (0.028)	0.016 (0.011)	0.069*** (0.015)	0.051*** (0.012)	0.001 (0.011)	0.015*** (0.005)	0.011*** (0.004)	0.006 (0.004)
Partisan Control		0.753*** (0.240)	0.625*** (0.151)		0.938*** (0.201)	0.465*** (0.150)		0.223*** (0.042)	0.203*** (0.045)
Leg. Professionalism		0.268*** (0.061)	0.089* (0.050)		0.195*** (0.043)	0.100* (0.055)		0.025 (0.023)	0.017 (0.022)
House Polarization		0.283 (0.465)	0.923*** (0.226)		0.437 (0.431)	1.395*** (0.213)		-0.275** (0.118)	-0.207* (0.113)
Senate Polarization		0.078 (0.406)	-0.491** (0.201)		-0.143 (0.278)	-0.603*** (0.182)		-0.010 (0.068)	-0.036 (0.065)
Union Density			0.078*** (0.014)			0.100*** (0.015)			0.001 (0.009)
Gini Coef.			1.133 (2.028)			-0.537 (1.968)			0.369 (0.883)
State CPI			6.816*** (0.999)			5.220*** (0.997)			1.264*** (0.438)
GSP Per Capita			-0.160 (0.443)			0.076 (0.373)			0.151 (0.310)
Population			-0.112 (0.081)			-0.239*** (0.071)			-0.264 (0.279)
Fixed Effects	Year	Year	Year	Year + Region	Year + Region	Year + Region	Year + State	Year + State	Year + State
N	950	687	687	950	687	687	950	687	687
R ²	0.160	0.425	0.828	0.521	0.712	0.868	0.980	0.989	0.989

*p < .1; **p < .05; ***p < .01

Note: All variables are at the state-year level. All models include year fixed effects. Control variables are lagged. Robust standard errors are clustered by state.

Appendix Table A4: OLS Regressions: Policy Mood and Regional Time Trends

	(1)	(2)	(3)	(4)	(5)	(6)	(7)	(8)	(9)
Policy Mood	0.062*** (0.016)	0.047*** (0.013)	0.005 (0.009)	0.068*** (0.016)	0.055*** (0.012)	0.006 (0.010)	0.008* (0.004)	0.007** (0.003)	0.005 (0.004)
Partisan Control		0.809*** (0.211)	0.499*** (0.136)		0.973*** (0.209)	0.482*** (0.148)		0.206*** (0.040)	0.208*** (0.039)
Leg. Professionalism		0.204*** (0.044)	0.094* (0.053)		0.187*** (0.043)	0.092* (0.051)		0.008 (0.028)	0.010 (0.027)
House Polarization		0.516 (0.423)	1.358*** (0.196)		0.407 (0.428)	1.364*** (0.214)		-0.165 (0.111)	-0.170 (0.109)
Senate Polarization		-0.155 (0.273)	-0.549*** (0.187)		-0.106 (0.290)	-0.567*** (0.196)		0.036 (0.075)	0.025 (0.065)
Union Density			0.096*** (0.014)			0.094*** (0.015)			0.003 (0.008)
Gini Coef.			0.403 (1.908)			-0.361 (1.919)			0.373 (0.893)
State CPI			6.116*** (0.997)			6.512*** (1.081)			0.706 (0.856)
GSP Per Capita			-0.022 (0.362)			-0.099 (0.362)			0.131 (0.271)
Population			-0.246*** (0.066)			-0.232*** (0.066)			0.191 (0.336)
Fixed Effects	Year 1,000	Year 687	Year 687	Year + Region 1,000	Year + Region 687	Year + Region 687	Year + State 1,000	Year + State 687	Year + State 687
N	0.455	0.681	0.868	0.525	0.720	0.877	0.982	0.990	0.990
R ²									

*p < .1; **p < .05; ***p < .01

Note: All variables are at the state-year level. All models include year fixed effects and a region-specific time trend. Control variables are lagged. Robust standard errors are clustered by state.

Appendix Table A5: OLS Regressions: Citizen Ideology, Alternate Measure (Social)

	Policy Liberalism								
	(1)	(2)	(3)	(4)	(5)	(6)	(7)	(8)	(9)
Citizen Ideology (Social)	2.048*** (0.179)	1.804*** (0.172)	1.053*** (0.178)	1.736*** (0.248)	1.340*** (0.256)	0.770*** (0.174)	0.506*** (0.083)	0.319*** (0.076)	0.240** (0.092)
Partisan Control		0.445** (0.212)	0.470*** (0.135)		0.658*** (0.175)	0.389*** (0.130)		0.193*** (0.039)	0.187*** (0.042)
Leg. Professionalism		0.150*** (0.034)	0.104* (0.057)		0.155*** (0.037)	0.102* (0.058)		0.038 (0.023)	0.026 (0.022)
House Polarization		0.253 (0.272)	0.680*** (0.196)		0.275 (0.306)	1.107*** (0.198)		-0.240** (0.115)	-0.207* (0.108)
Senate Polarization		-0.184 (0.243)	-0.405** (0.177)		-0.214 (0.251)	-0.486*** (0.171)		0.001 (0.059)	-0.031 (0.063)
Union Density			0.075*** (0.015)			0.093*** (0.015)			0.003 (0.008)
Gini Coef.			0.074 (1.806)			-0.277 (1.591)			0.389 (0.872)
State CPI			2.667** (1.255)			2.649** (1.103)			1.108** (0.454)
GSP Per Capita			-0.567 (0.368)			-0.345 (0.325)			0.016 (0.291)
Population			-0.141* (0.075)			-0.235*** (0.067)			-0.143 (0.264)
Fixed Effects	Year	Year	Year	Year + Region	Year + Region	Year + Region	Year + State	Year + State	Year + State
N	1,050	687	687	1,050	687	687	1,050	687	687
R ²	0.677	0.754	0.865	0.703	0.792	0.886	0.979	0.989	0.990

*p < .1; **p < .05; ***p < .01

Note: All variables are at the state-year level. All models include year fixed effects. Control variables are lagged. Robust standard errors are clustered by state.

Appendix Table A6: OLS Regressions: Citizen Ideology, Alternate Measure (Economic)

	Policy Liberalism								
	(1)	(2)	(3)	(4)	(5)	(6)	(7)	(8)	(9)
Citizen Ideology (Econ.)	3.352*** (0.499)	3.376*** (0.706)	2.114*** (0.360)	3.984*** (0.655)	3.176*** (0.677)	1.364*** (0.415)	0.437*** (0.162)	0.283* (0.162)	0.239 (0.153)
Partisan Control		0.343 (0.268)	0.365*** (0.116)		0.614*** (0.137)	0.380*** (0.124)		0.231*** (0.041)	0.207*** (0.045)
Leg. Professionalism		0.159*** (0.059)	0.069 (0.047)		0.104** (0.049)	0.081 (0.050)		0.029 (0.024)	0.017 (0.021)
House Polarization		0.759 (0.504)	1.182*** (0.179)		0.547 (0.402)	1.334*** (0.193)		-0.258** (0.124)	-0.201* (0.111)
Senate Polarization		-0.139 (0.404)	-0.481*** (0.163)		-0.237 (0.259)	-0.528*** (0.168)		0.019 (0.062)	-0.034 (0.063)
Union Density			0.070*** (0.013)			0.084*** (0.015)			0.002 (0.009)
Gini Coef.			1.443 (1.667)			0.381 (1.730)			0.426 (0.884)
State CPI			5.686*** (0.765)			4.781*** (0.910)			1.504*** (0.434)
GSP Per Capita			0.020 (0.325)			0.114 (0.325)			0.121 (0.307)
Population			-0.253*** (0.071)			-0.269*** (0.067)			-0.182 (0.277)
Fixed Effects	Year	Year	Year	Year + Region	Year + Region	Year + Region	Year + State	Year + State	Year + State
N	1,050	687	687	1,050	687	687	1,050	687	687
R ²	0.256	0.476	0.869	0.654	0.753	0.878	0.976	0.989	0.990

*p < .1; **p < .05; ***p < .01

Note: All variables are at the state-year level. All models include year fixed effects. Control variables are lagged. Robust standard errors are clustered by state.

Appendix Table A7: Erikson et al. 1993 Weighted State Ideology Measure

	(1)	(2)	(3)	(4)	(5)	(6)	(7)	(8)	(9)
Citizen Ideology	6.597*** (0.753)	5.406*** (0.776)	1.685*** (0.351)	4.380*** (0.769)	2.991*** (0.647)	1.128*** (0.279)	0.193** (0.082)	0.047 (0.064)	-0.014 (0.064)
Partisan Control		0.570*** (0.212)	0.573*** (0.143)		0.823*** (0.159)	0.435*** (0.140)		0.227*** (0.043)	0.201*** (0.046)
Leg. Professionalism		0.223*** (0.044)	0.096** (0.047)		0.193*** (0.040)	0.096* (0.051)		0.027 (0.025)	0.015 (0.022)
House Polarization		0.202 (0.354)	0.838*** (0.205)		0.372 (0.381)	1.294*** (0.194)		-0.264** (0.126)	-0.204* (0.115)
Senate Polarization		-0.077 (0.309)	-0.475*** (0.177)		-0.222 (0.260)	-0.556*** (0.162)		0.020 (0.064)	-0.032 (0.065)
Union Density			0.073*** (0.013)			0.096*** (0.014)			0.001 (0.010)
Gini Coef.			0.732 (1.938)			-0.281 (1.705)			0.303 (0.891)
State CPI			5.877*** (0.950)			4.601*** (0.907)			1.519*** (0.440)
GSP Per Capita			-0.107 (0.411)			0.026 (0.319)			0.152 (0.310)
Population			-0.120 (0.081)			-0.231*** (0.063)			-0.190 (0.285)
Fixed Effects	Year	Year	Year	Year + Region	Year + Region	Year + Region	Year + State	Year + State	Year + State
N	1,040	687	687	1,040	687	687	1,040	687	687
R ²	0.439	0.575	0.840	0.592	0.731	0.874	0.976	0.988	0.989

*p < .1; **p < .05; ***p < .01

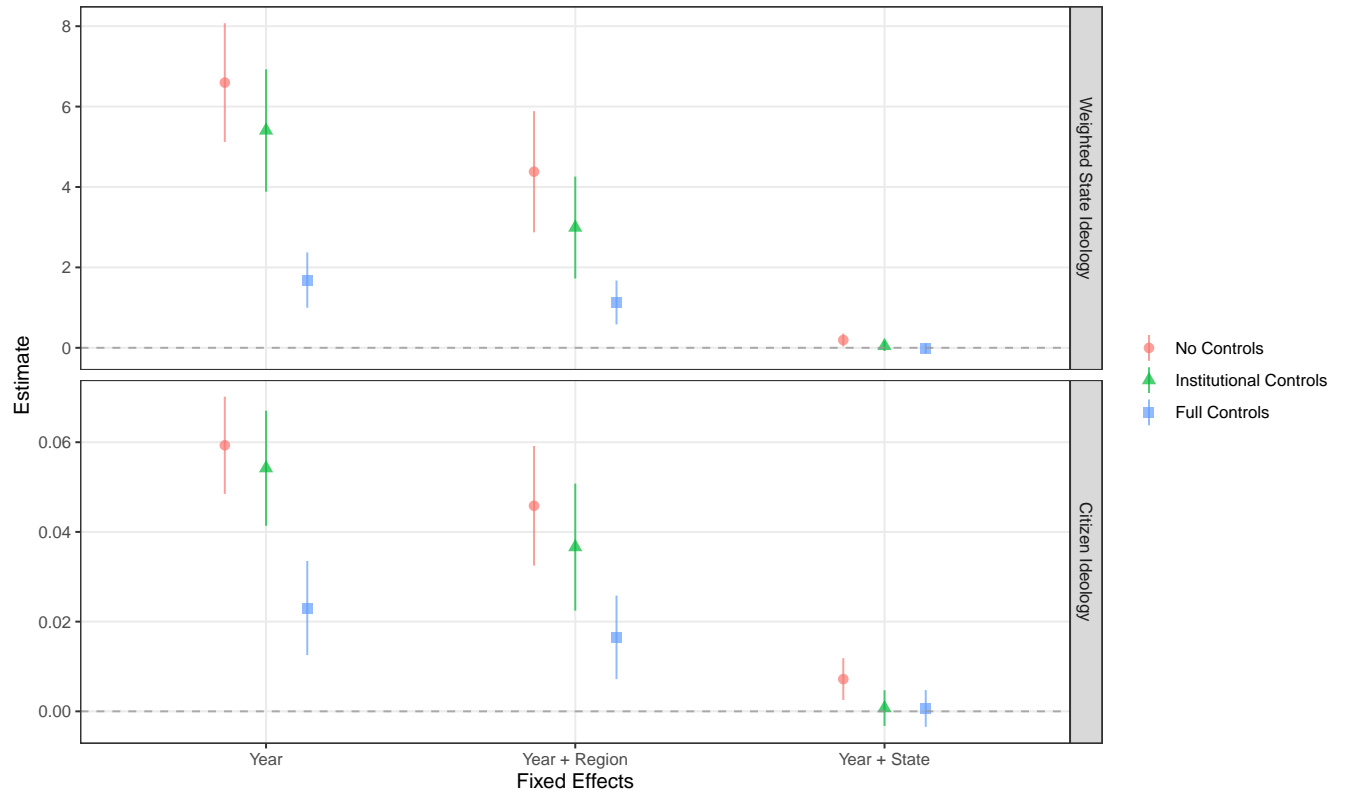
Note: All variables are at the state-year level. All models include year fixed effects. Control variables are lagged. Robust standard errors are clustered by state.

Appendix Table A8: Berry et al. 2010 Citizen Ideology Measure

	Policy Liberalism								
	(1)	(2)	(3)	(4)	(5)	(6)	(7)	(8)	(9)
Citizen Ideology	0.059*** (0.006)	0.054*** (0.007)	0.023*** (0.005)	0.046*** (0.007)	0.037*** (0.007)	0.016*** (0.005)	0.007*** (0.002)	0.001 (0.002)	0.001 (0.002)
Partisan Control		0.294 (0.235)	0.458*** (0.151)		0.586*** (0.154)	0.371*** (0.133)		0.225*** (0.045)	0.200*** (0.047)
Leg. Professionalism		0.166*** (0.046)	0.085* (0.050)		0.164*** (0.039)	0.088* (0.053)		0.027 (0.025)	0.015 (0.022)
House Polarization		0.271 (0.345)	0.783*** (0.212)		0.311 (0.322)	1.155*** (0.192)		-0.268** (0.127)	-0.205* (0.114)
Senate Polarization		0.257 (0.364)	-0.265 (0.210)		0.020 (0.265)	-0.399** (0.173)		0.023 (0.062)	-0.031 (0.063)
Union Density			0.066*** (0.014)			0.086*** (0.016)			0.001 (0.009)
Gini Coef.			1.104 (1.646)			-0.477 (1.622)			0.307 (0.888)
State CPI			4.788*** (0.986)			3.611*** (0.866)			1.516*** (0.436)
GSP Per Capita			0.227 (0.331)			0.277 (0.287)			0.151 (0.308)
Population			-0.132* (0.077)			-0.203*** (0.065)			-0.186 (0.285)
Fixed Effects	Year	Year	Year	Year + Region	Year + Region	Year + Region	Year + State	Year + State	Year + State
N	1,000	687	687	1,000	687	687	1,000	687	687
R ²	0.536	0.669	0.859	0.665	0.778	0.882	0.978	0.988	0.989

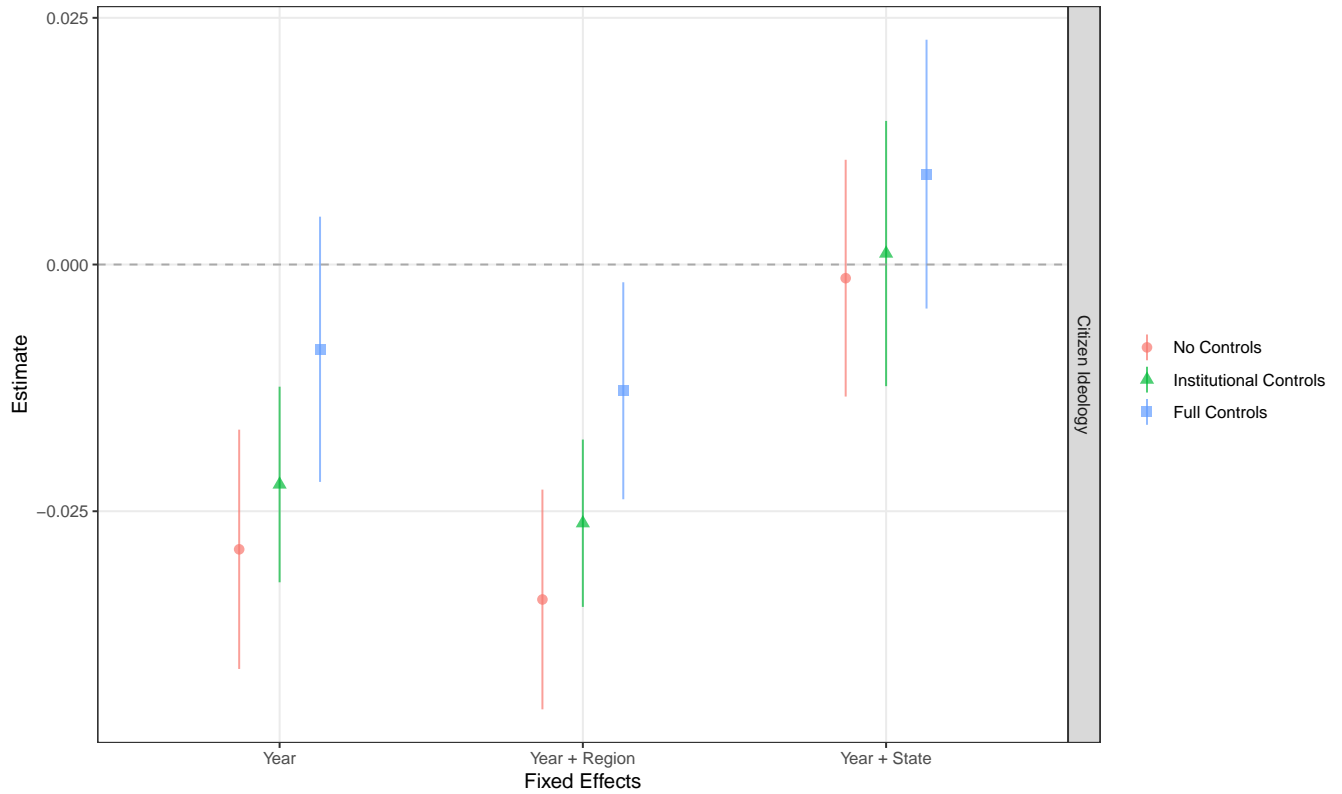
* p < .1; ** p < .05; *** p < .01

Note: All variables are at the state-year level. All models include year fixed effects. Control variables are lagged. Robust standard errors are clustered by state.



Appendix Figure A5: Estimated Coefficients by Different Model Specifications: Alternative Measures

Note: The outcome for each model is policy liberalism, and the plotted coefficients are weighted state ideology or citizen ideology scores. All models include year fixed-effects and state clustered standard errors.



Appendix Figure A6: Estimated Coefficients by Different Model Specifications: Open Carry Gun Laws

Note: The outcome is a binary variable indicating whether a state adopted open carry gun laws. The plotted coefficient is the policy mood variable used in the main text. All models include year fixed-effects and state clustered standard errors.

2016). Table A9 displays the full results and Figure A6 plots the coefficient for policy mood across model specifications. Again, interpretation depends on the chosen model specification, ranging from a statistically precise 3% decrease in probability of adoption to an imprecise but positive increase when using state fixed effects.

Appendix Table A9: OLS Regressions: Open Carry Laws

	(1)	(2)	(3)	(4)	(5)	(6)	(7)	(8)	(9)	
					Economic Liberalism					
Policy Mood	-0.029*** (0.006)	-0.022*** (0.005)	-0.009 (0.007)	-0.034*** (0.006)	-0.026*** (0.004)	-0.013** (0.006)	-0.001 (0.006)	0.001 (0.007)	0.009 (0.007)	
Partisan Control		-0.118 (0.099)	-0.052 (0.091)		-0.204** (0.090)	-0.107 (0.082)		0.050 (0.070)	0.060 (0.070)	
Leg. Professionalism		-0.113*** (0.024)	-0.081** (0.036)		-0.103*** (0.021)	-0.079** (0.031)		-0.0001 (0.033)	0.020 (0.039)	
House Polarization		-0.163 (0.178)	-0.237 (0.158)		-0.060 (0.181)	-0.217 (0.154)		0.275 (0.218)	0.290 (0.220)	
Senate Polarization		0.282** (0.143)	0.387*** (0.132)		0.225* (0.120)	0.338*** (0.110)		-0.002 (0.143)	0.055 (0.133)	
Union Density			-0.012 (0.009)			-0.008 (0.009)			-0.027** (0.013)	
Gini Coef.			2.735* (1.441)			0.413 (1.365)			-0.670 (1.316)	
State CPI			-0.888 (0.685)			-2.347** (0.912)			-1.025 (0.731)	
GSP Per Capita			-0.221 (0.267)			-0.084 (0.221)			-0.808** (0.380)	
Population			-0.030 (0.053)			0.002 (0.060)			-0.685 (0.619)	
Fixed Effects	Year	Year	Year	Year + Region	Year + Region	Year + Region	Year + State	Year + State	Year + State	
N	1,020	687	687	1,020	687	687	1,020	687	687	
R ²	0.182	0.334	0.434	0.256	0.440	0.499	0.752	0.844	0.854	

*p < .1; **p < .05; ***p < .01

Note: All variables are at the state-year level. All models include year fixed effects. Control variables are lagged. Robust standard errors are clustered by state.