

Appendix A:

Additional figures for Post-WWII references only and analysis adding democratic breakdown as control.

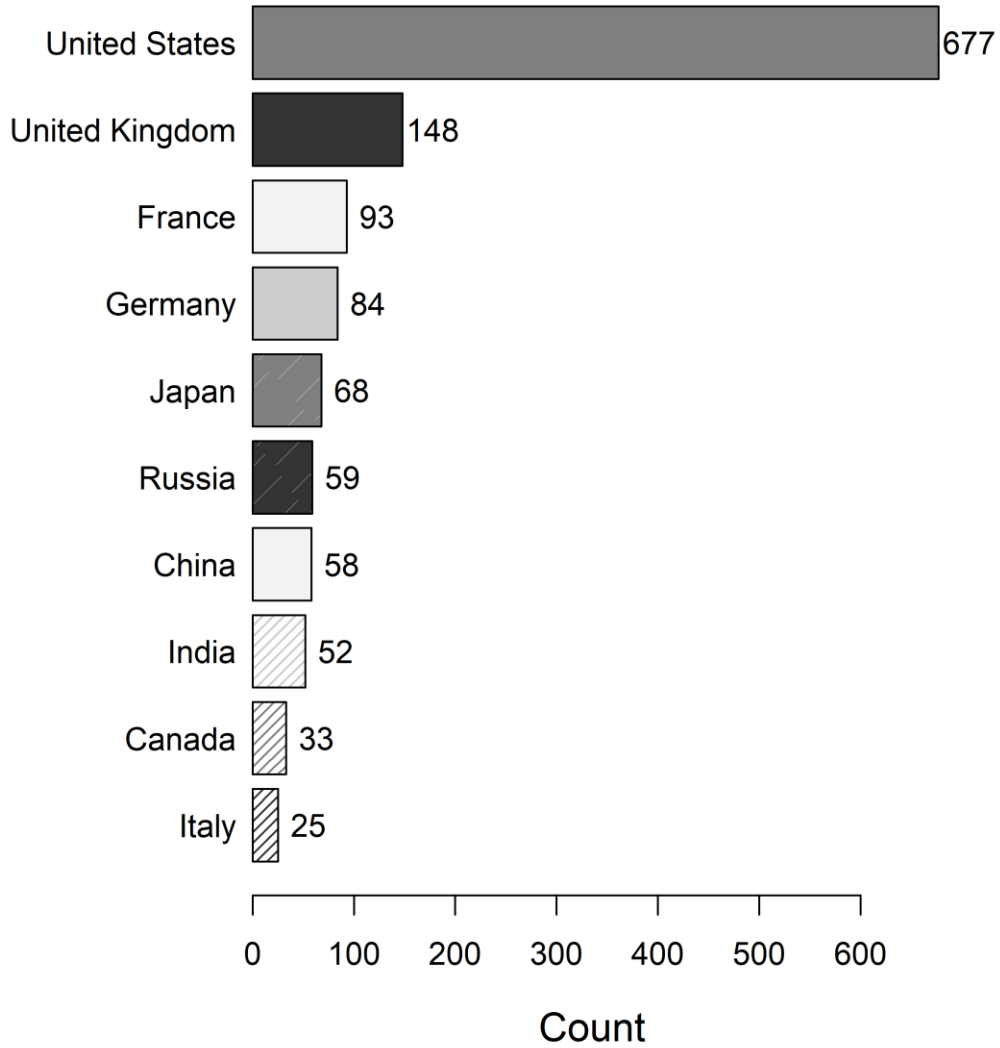


Figure A.1: Number of references in APSR titles or abstracts, 1946-2019, for 10 most referenced countries.

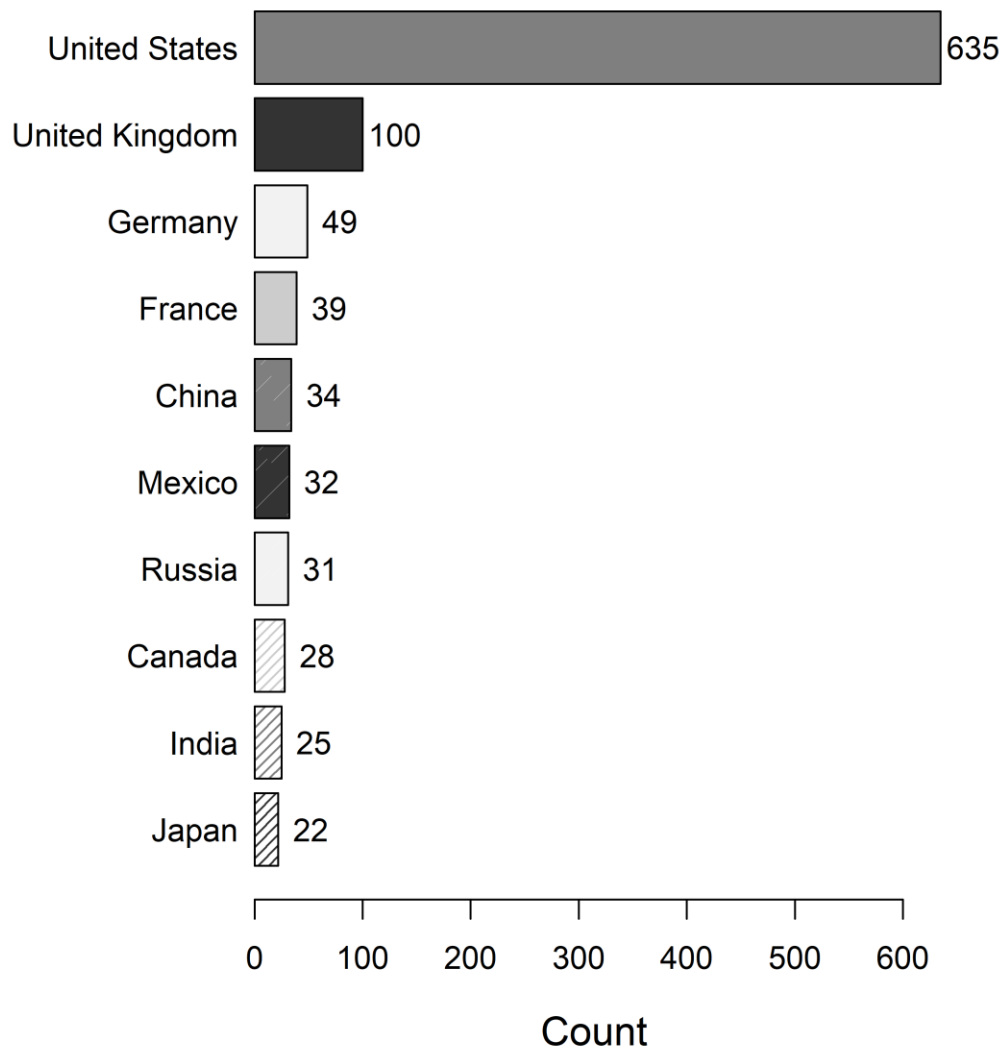


Figure A.2: Number of references in JOP titles or abstracts, 1946-2019, for 10 most referenced countries.

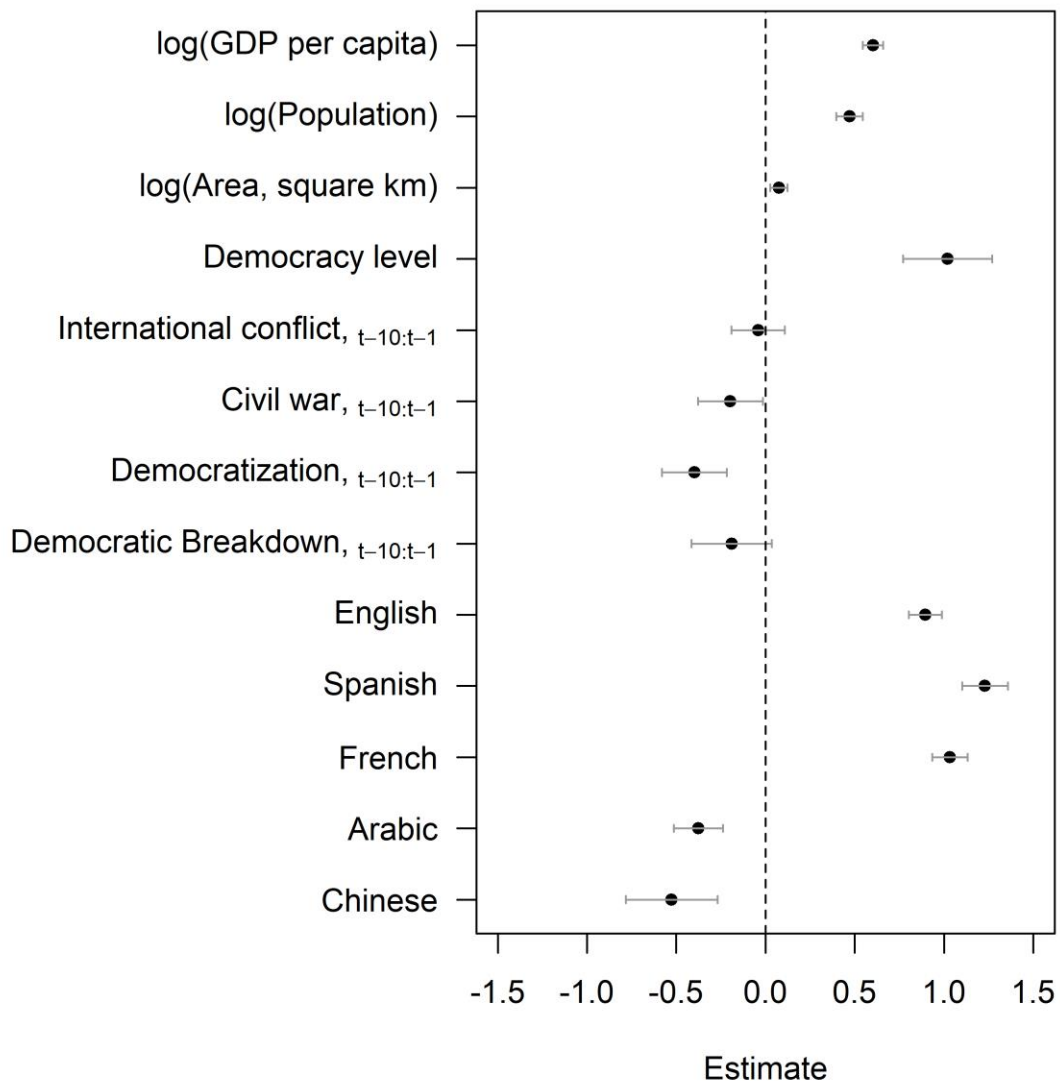


Figure A.3: Coefficient plot for OLS regression on number of references, including democratic breakdowns. (95% confidence intervals. Includes imputed values. Year fixed effects not shown.)

Appendix B:

Replications for comparative politics journals (CP, CPS, WP) only.

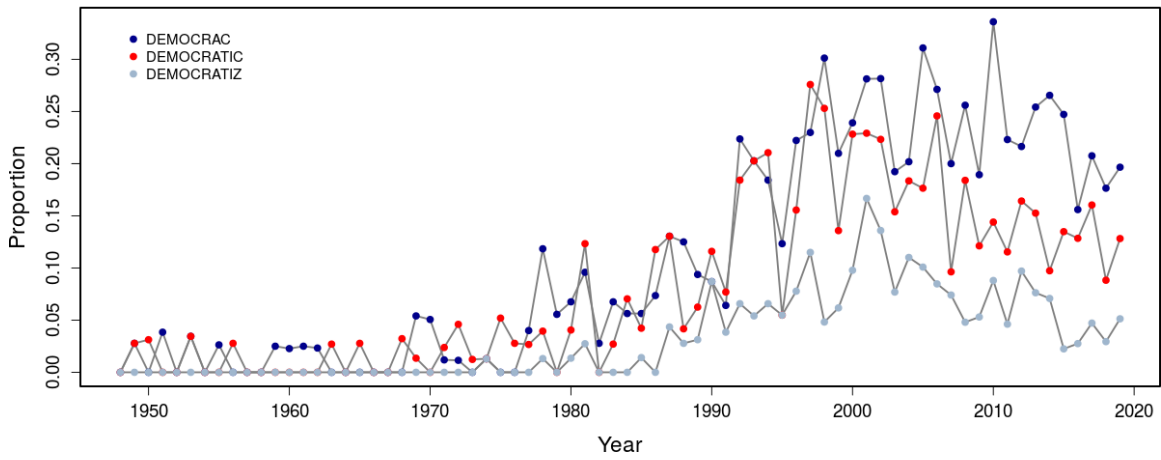
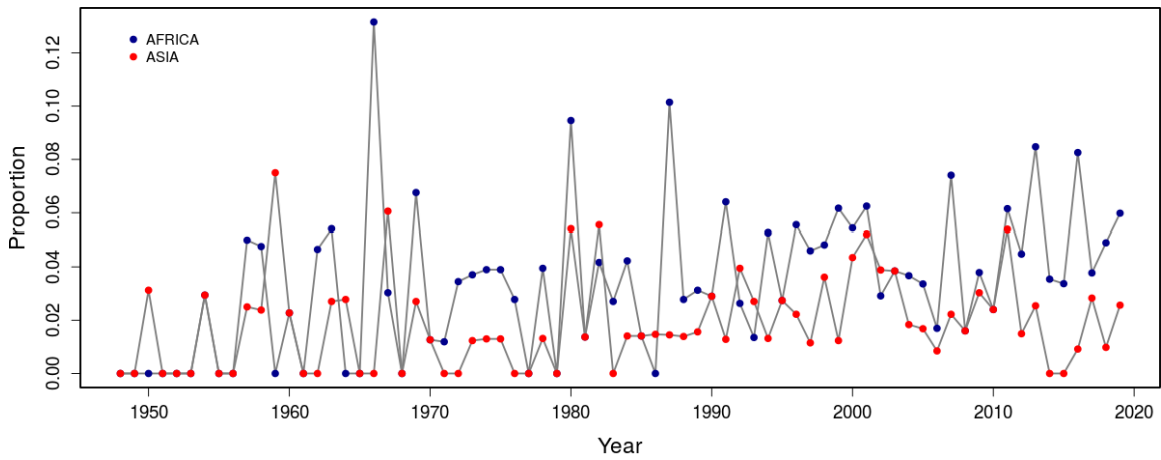


Figure B.1: Trends in search terms related to Africa and Asia (top) and democracy (bottom).
(For CP, CPS, and WP only.)

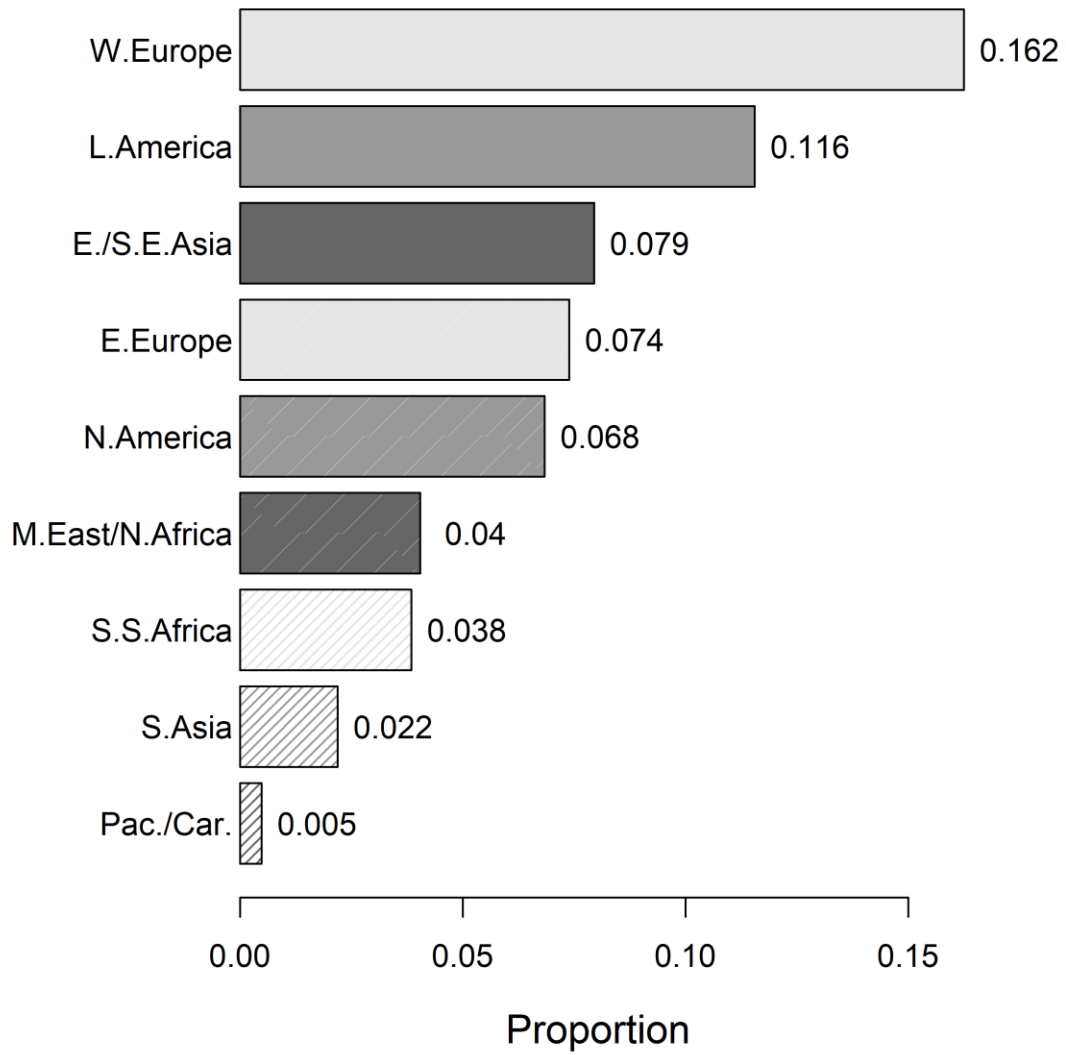


Figure B.2: Proportion of references in titles or abstracts, by region.
(For CP, CPS, and WP only.)

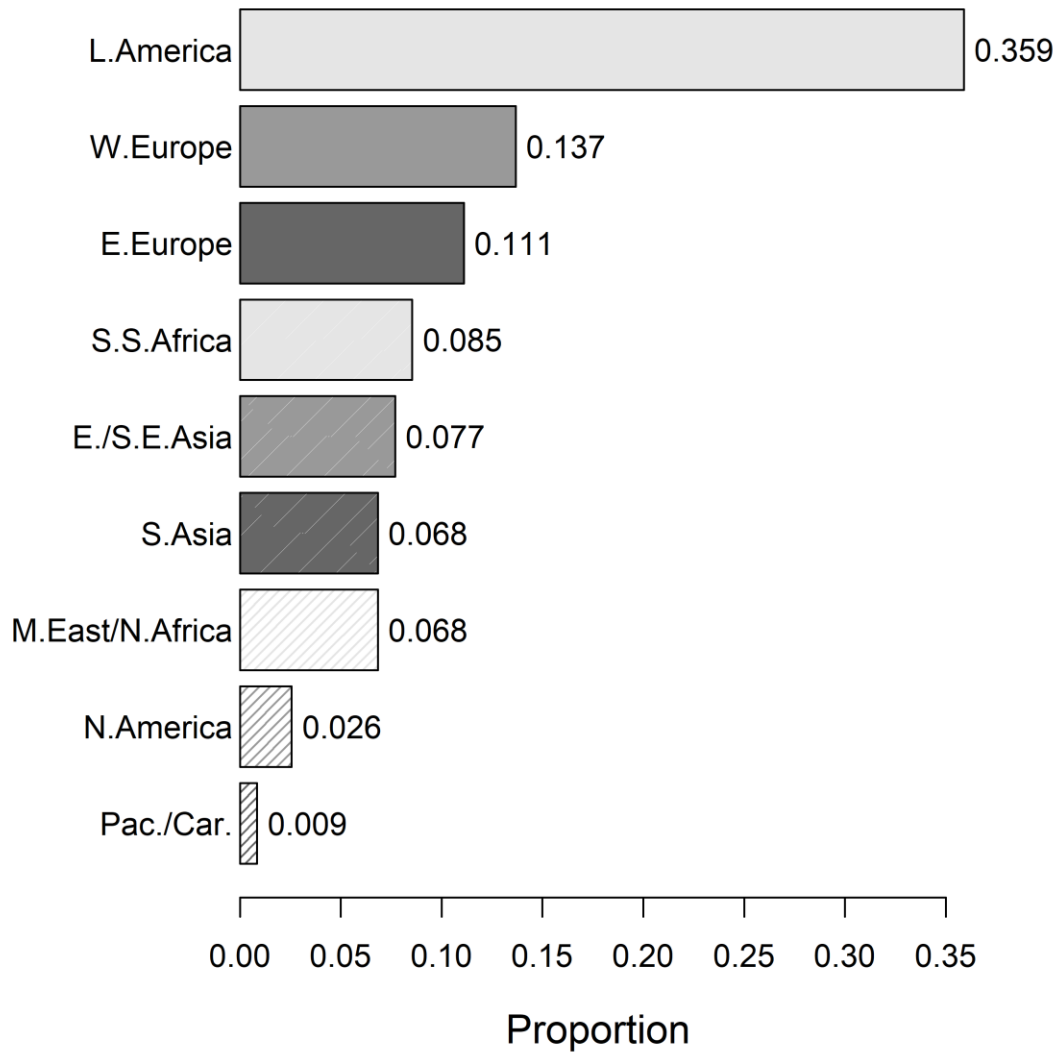


Figure B.3: Proportion of references in titles or abstracts in 2019, by region.
(For CP, CPS, and WP only.)

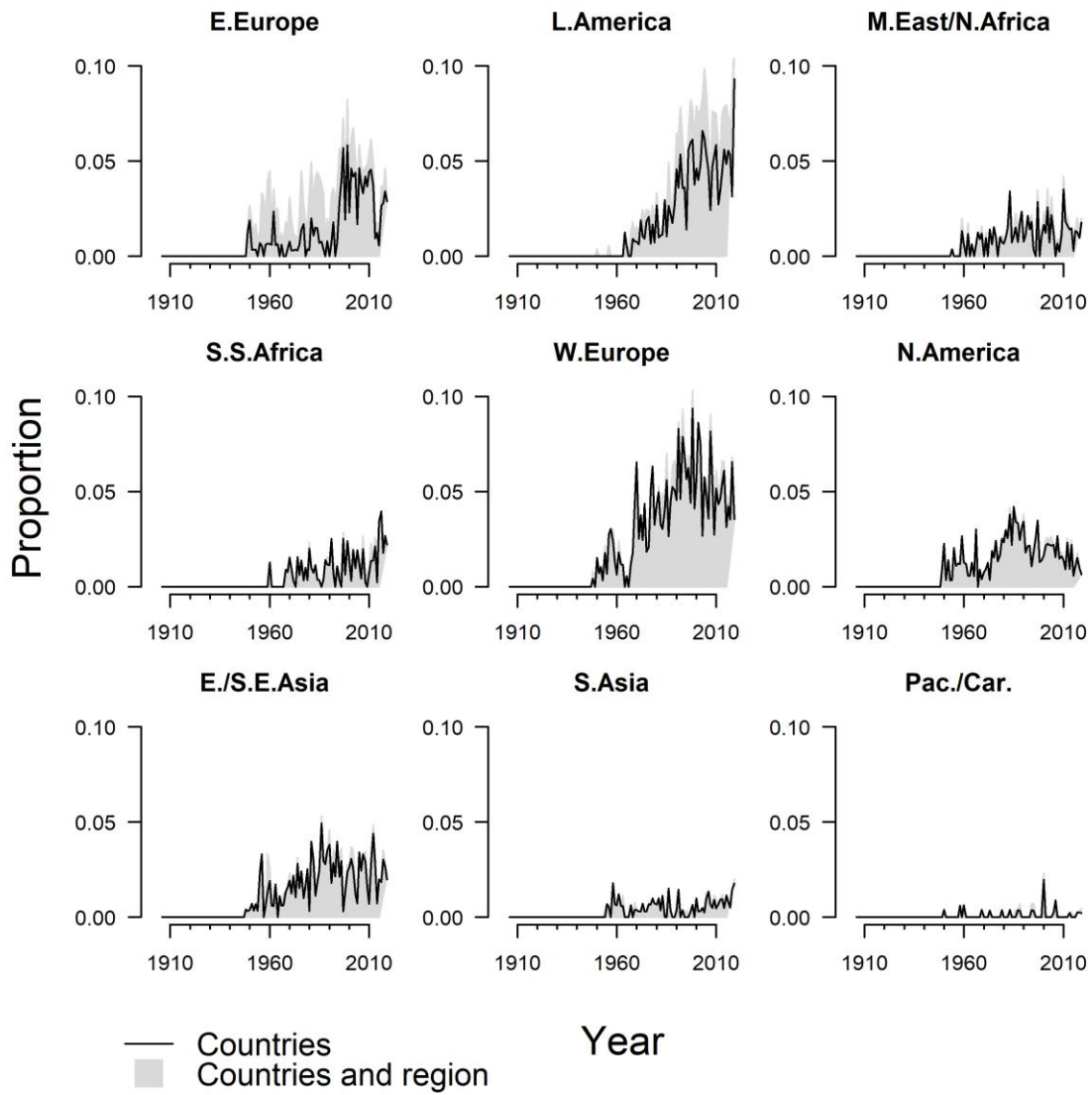


Figure B.4: Proportion of references in titles or abstracts by year, by region.
 (For CP, CPS, and WP only.)

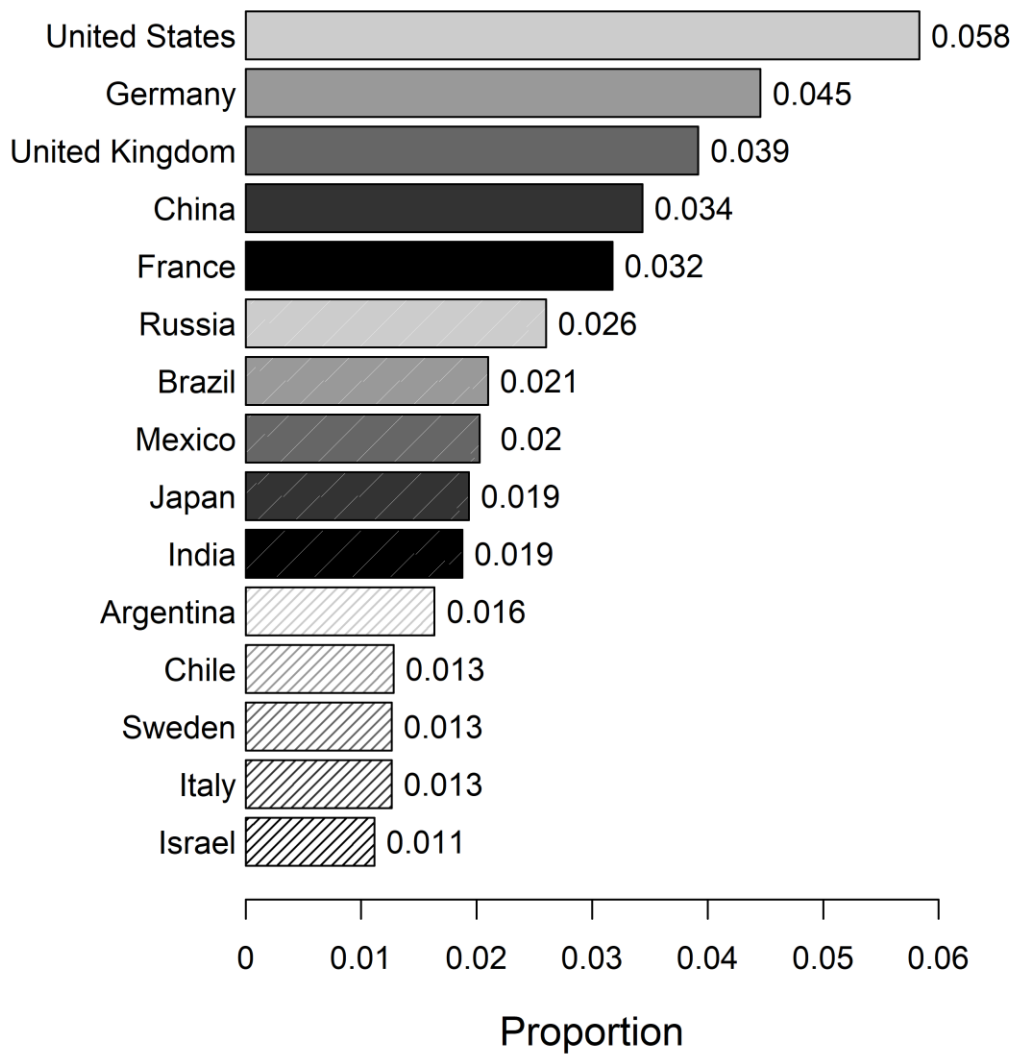


Figure B.5: Proportion of references in titles or abstracts, 1906–2019, for 15 most referenced countries. (For CP, CPS, and WP only.)

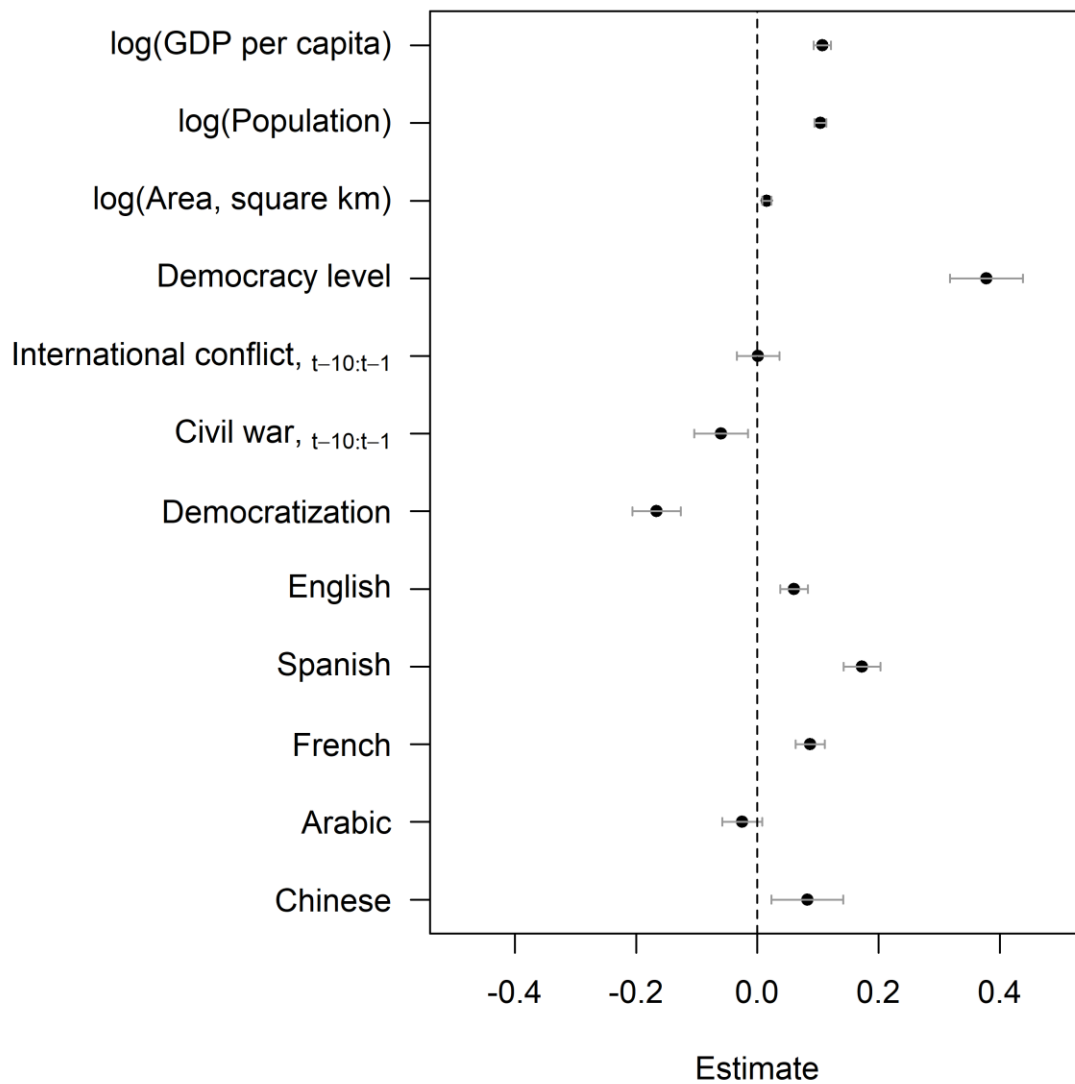


Figure B.6: Coefficient plot for OLS regression on number of references.
 (For CP, CPS, and WP only.
 95% confidence intervals. Includes imputed values. Year fixed effects not shown.)

Appendix C:

Robustness tests including region fixed effects and omitting U.K. and U.S.

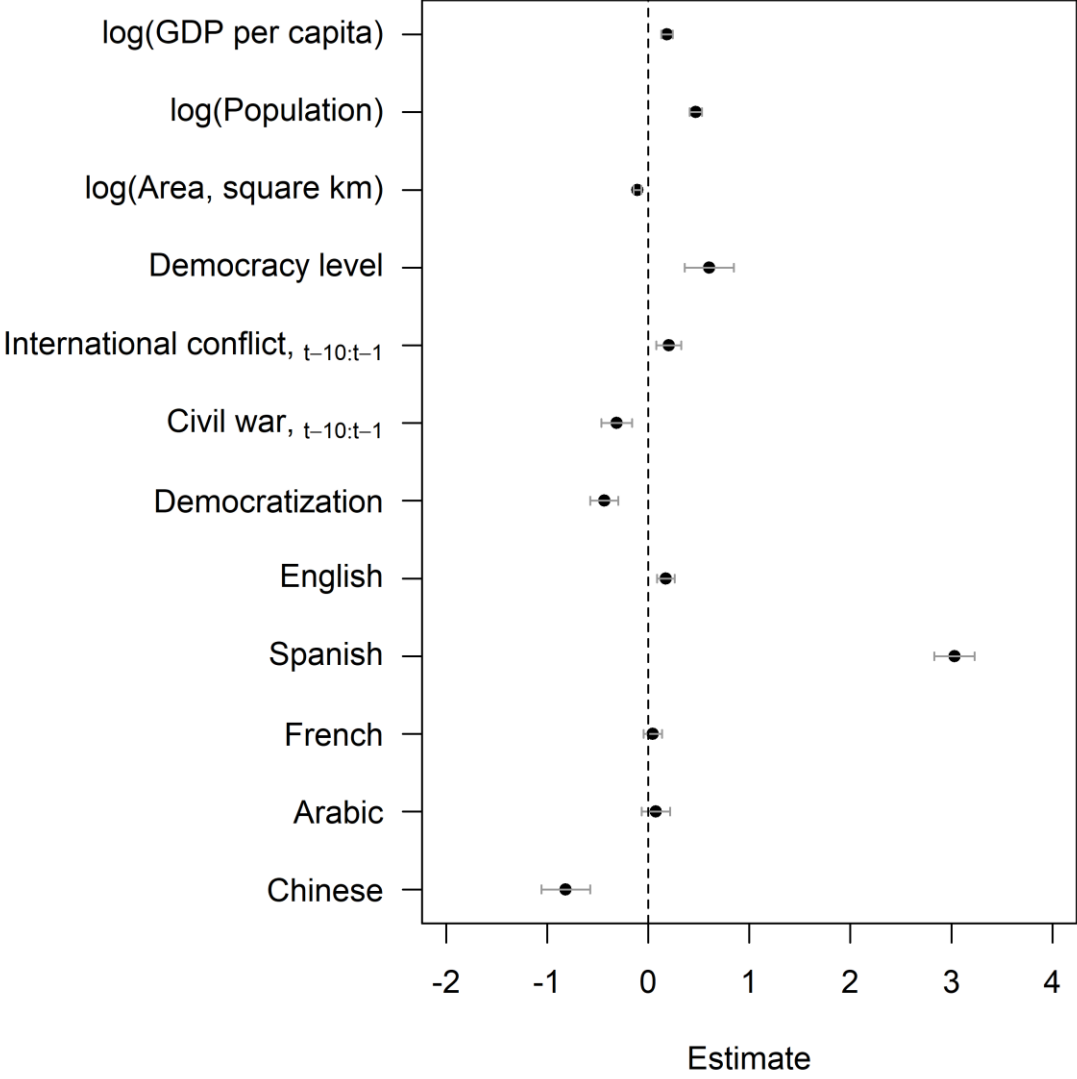


Figure C.1: Results from OLS regression with region dummies on number of references. (Year and region fixed effects not shown. Point estimate surrounded by 95% CI.)

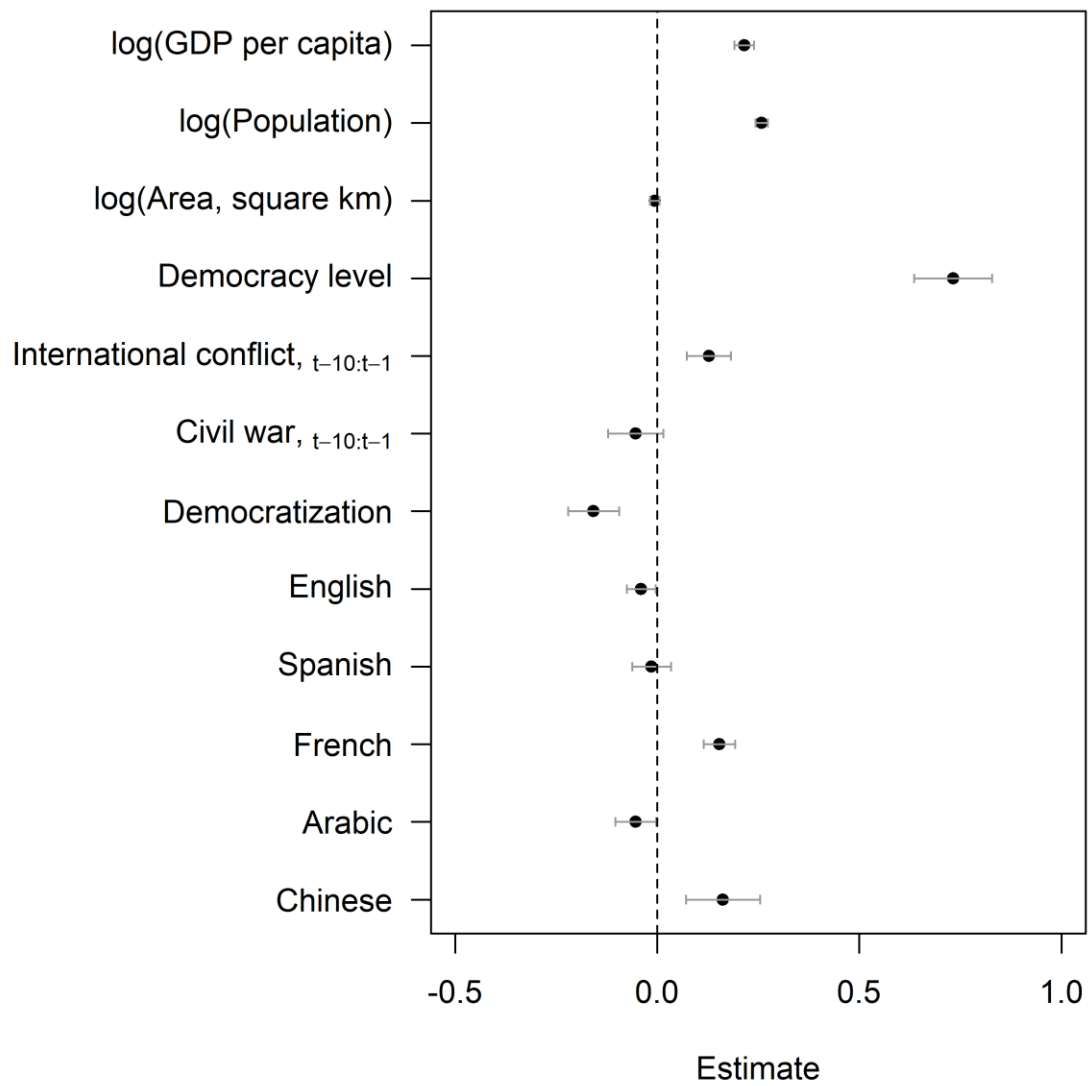


Figure C2: Results from benchmark OLS regression on number of references, omitting UK and USA.
(Year fixed effects not shown. Point estimate surrounded by 95% CI.)

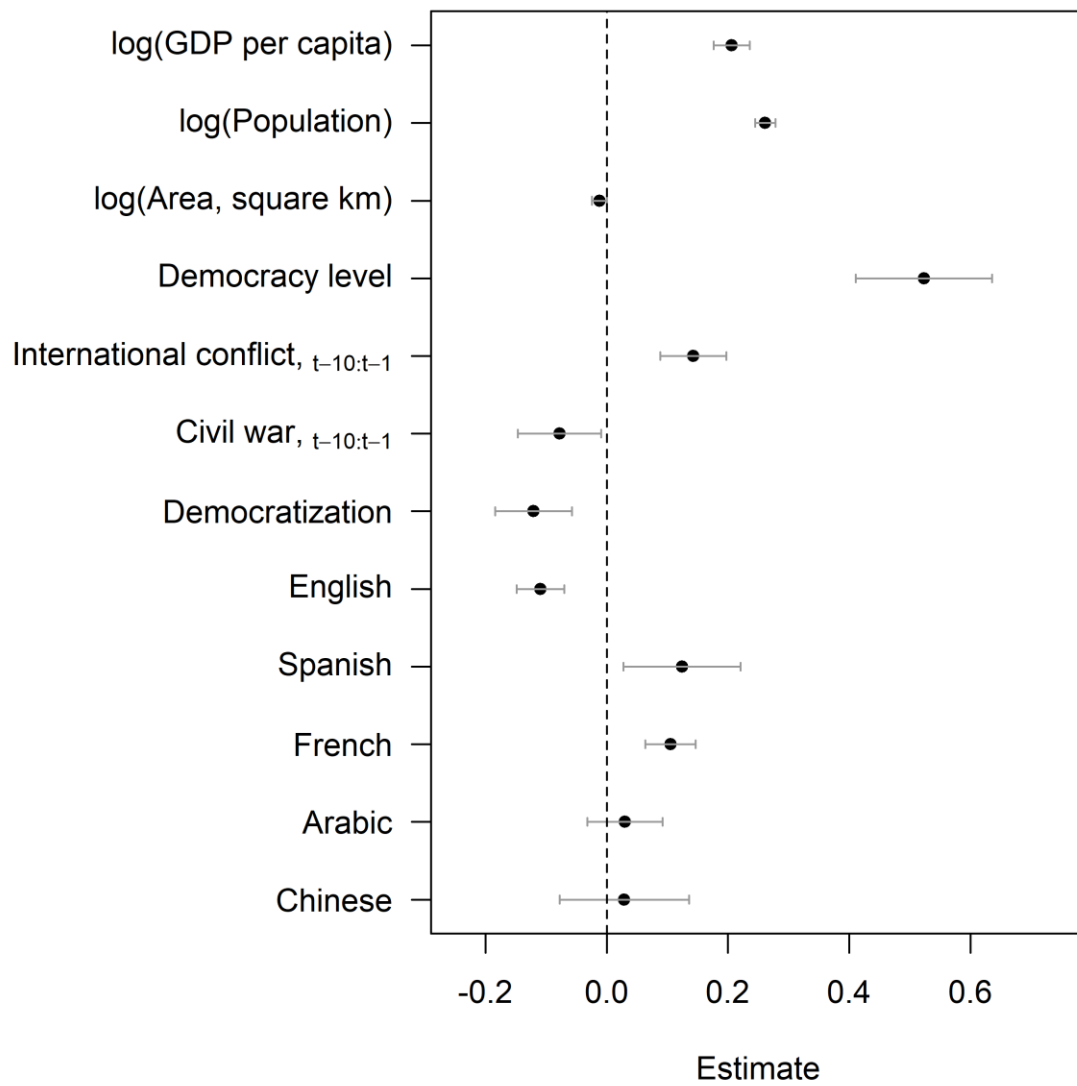


Figure C.3: Results from OLS regression with region dummies on number of references, omitting UK and USA.

(Year and region fixed effects not shown. Point estimate surrounded by 95% CI.)

Appendix D:

Results from OLS regressions with and without imputed data.

Table D.1: Linear regression estimating country references
(*showing models with and without imputed values*).

	(1)	(2)	(3)	(4)
Ln GDP p.c.	0.757** (0.044)	0.599** (0.033)	0.255** (0.045)	0.171*** (0.033)
Ln population	0.757** (0.029)	0.453*** (0.023)	0.851*** (0.027)	0.454*** (0.021)
Ln area	-0.021 (0.023)	0.085*** (0.017)	-0.318*** (0.020)	-0.099*** (0.015)
Polyarchy	0.995*** (0.172)	1.075*** (0.130)	1.275*** (0.165)	0.631*** (0.124)
International conflict	-0.032 (0.090)	-0.027 (0.072)	0.251*** (0.074)	0.209*** (0.061)
Civil war	-0.281** (0.115)	-0.195** (0.092)	-0.481*** (0.095)	-0.310*** (0.077)
Democratization	-0.605*** (0.113)	-0.474*** (0.084)	-0.554*** (0.094)	-0.443*** (0.072)
English	0.896*** (0.068)	0.880*** (0.047)	0.087 (0.062)	0.171*** (0.045)
Spanish	1.272*** (0.083)	1.216*** (0.063)	3.753*** (0.144)	3.029*** (0.103)
French	1.204*** (0.071)	1.036*** (0.051)	-0.132** (0.066)	0.049 (0.047)
Arabic	-0.489*** (0.104)	-0.384*** (0.068)	0.192** (0.106)	0.069 (0.070)
Chinese	-0.602*** (0.172)	-0.501*** (0.124)	-0.666*** (0.166)	-0.796*** (0.118)
Intercept	-13.503*** (0.615)	-9.908*** (0.394)	-6.826*** (0.566)	-4.250*** (0.372)
Imputed values	No	Yes	No	Yes
Year F.E.	Yes	Yes	Yes	Yes
Region F.E.	No	No	Yes	Yes
Observations	8,641	16,425	8,641	16,425
Log-likelihood	-21,523	-24,420 (avg.)	-19,826	-24,327 (avg.)
Akaike Inf. Crit.	43,264	49,094 (avg.)	39,884	48,924 (avg.)

*p<0.1; **p<0.05; ***p<0.01

Table D.2: Linear regression estimating country references, by journal.

	AJPS (1)	APSR (2)	BJPS (3)	CPS (4)
Ln GDP p.c.	0.060*** (0.008)	0.396*** (0.027)	0.044*** (0.005)	0.031*** (0.004)
Ln population	0.056*** (0.005)	0.365*** (0.018)	0.033*** (0.004)	0.039*** (0.003)
Ln area	0.006 (0.004)	-0.029** (0.014)	0.001 (0.003)	-0.003 (0.002)
Polyarchy	0.163*** (0.032)	-0.160 (0.106)	0.165*** (0.021)	0.189*** (0.017)
International conflict	0.004 (0.017)	-0.129** (0.056)	0.072*** (0.011)	0.020** (0.009)
Civil war	-0.042** (0.021)	-0.005 (0.071)	-0.072*** (0.014)	-0.044*** (0.012)
Democratization	-0.119*** (0.021)	0.042 (0.070)	-0.112*** (0.014)	-0.069*** (0.011)
English	0.094*** (0.013)	0.522*** (0.042)	0.045*** (0.008)	0.000 (0.007)
Spanish	0.178*** (0.015)	0.487*** (0.052)	0.025** (0.010)	0.056*** (0.008)
French	0.127*** (0.013)	0.719*** (0.044)	0.014 (0.009)	0.006 (0.007)
Arabic	-0.044** (0.019)	-0.281*** (0.065)	-0.048*** (0.013)	0.003 (0.011)
Chinese	-0.047 (0.032)	-0.548*** (0.107)	-0.047** (0.021)	0.002 (0.017)
Intercept	-1.223*** (0.114)	-6.234*** (0.380)	-0.717*** (0.076)	-0.627*** (0.062)
Imputed values	No	No	No	No
Year F.E.	Yes	Yes	Yes	Yes
Observations	8,641	8,641	8,641	8,641
Log-likelihood	-6,968	-17,366	-3,456	-1,734
Akaike Inf. Crit.	14,149	34,945	7,126	3,683

*p<0.1; **p<0.05; ***p<0.01

Table D.3: Linear regression estimating country references, by journal.

	CP (1)	IO (2)	JOP (3)	WP (4)
Ln GDP p.c.	0.020*** (0.005)	0.060*** (0.007)	0.077*** (0.009)	0.042*** (0.005)
Ln population	0.041*** (0.003)	0.060*** (0.004)	0.075*** (0.006)	0.069*** (0.004)
Ln area	-0.003 (0.002)	0.000 (0.003)	0.003 (0.004)	0.001 (0.003)
Polyarchy	0.190*** (0.018)	0.169*** (0.026)	0.168 (0.034)	0.131*** (0.021)
International conflict	0.020** (0.009)	0.016 (0.014)	-0.035* (0.018)	0.034*** (0.011)
Civil war	-0.032*** (0.012)	-0.043** (0.017)	-0.025 (0.023)	-0.030** (0.014)
Democratization	-0.064*** (0.012)	-0.116*** (0.017)	-0.130*** (0.022)	-0.024* (0.014)
English	-0.004 (0.007)	0.057*** (0.010)	0.118*** (0.013)	0.006 (0.008)
Spanish	0.044*** (0.009)	0.126*** (0.013)	0.204*** (0.016)	0.066*** (0.010)
French	0.009 (0.007)	0.084*** (0.011)	0.143*** (0.014)	0.033*** (0.009)
Arabic	0.011 (0.011)	-0.033** (0.016)	-0.052** (0.021)	-0.024* (0.013)
Chinese	0.019 (0.018)	-0.048* (0.026)	-0.066* (0.034)	0.171*** (0.021)
Intercept	-0.552*** (0.064)	-1.137*** (0.093)	-1.492*** (0.122)	-1.026*** (0.076)
Imputed values	No	No	No	No
Year F.E.	Yes	Yes	Yes	Yes
Observations	8,641	8,641	8,641	8,641
Log-likelihood	-1,980	-5,178	-7,514	-3,513
Akaike Inf. Crit.	4,173	10,571	15,241	7,239

*p<0.1; **p<0.05; ***p<0.01

Table D.4: Linear regression estimating country references
(USA and UK omitted).

	(1)	(2)
Ln GDP p.c.	0.224*** (0.016)	0.264*** (0.019)
Ln population	0.338*** (0.011)	0.395*** (0.012)
Ln area	-0.038*** (0.008)	-0.081*** (0.009)
Polyarchy	0.827*** (0.063)	0.682*** (0.072)
International conflict	0.237*** (0.033)	0.269*** (0.033)
Civil war	-0.208*** (0.042)	-0.240*** (0.041)
Democratization	-0.087** (0.041)	-0.042 (0.041)
English	-0.198*** (0.025)	-0.279*** (0.027)
Spanish	-0.145*** (0.031)	-0.066 (0.068)
French	0.165*** (0.026)	0.007 (0.028)
Arabic	-0.041 (0.038)	0.074 (0.046)
Chinese	0.238*** (0.062)	0.140* (0.072)
Intercept	-4.341*** (0.229)	-4.971*** (0.248)
Imputed values	No	No
Year F.E.	Yes	Yes
Region F.E.	No	Yes
Observations	8,451	8,451
Log-likelihood	-12,427	-12,296
Akaike Inf. Crit.	25,070	24,824

*p<0.1; **p<0.05; ***p<0.01

Appendix E:
Models with imputed data, by journal.

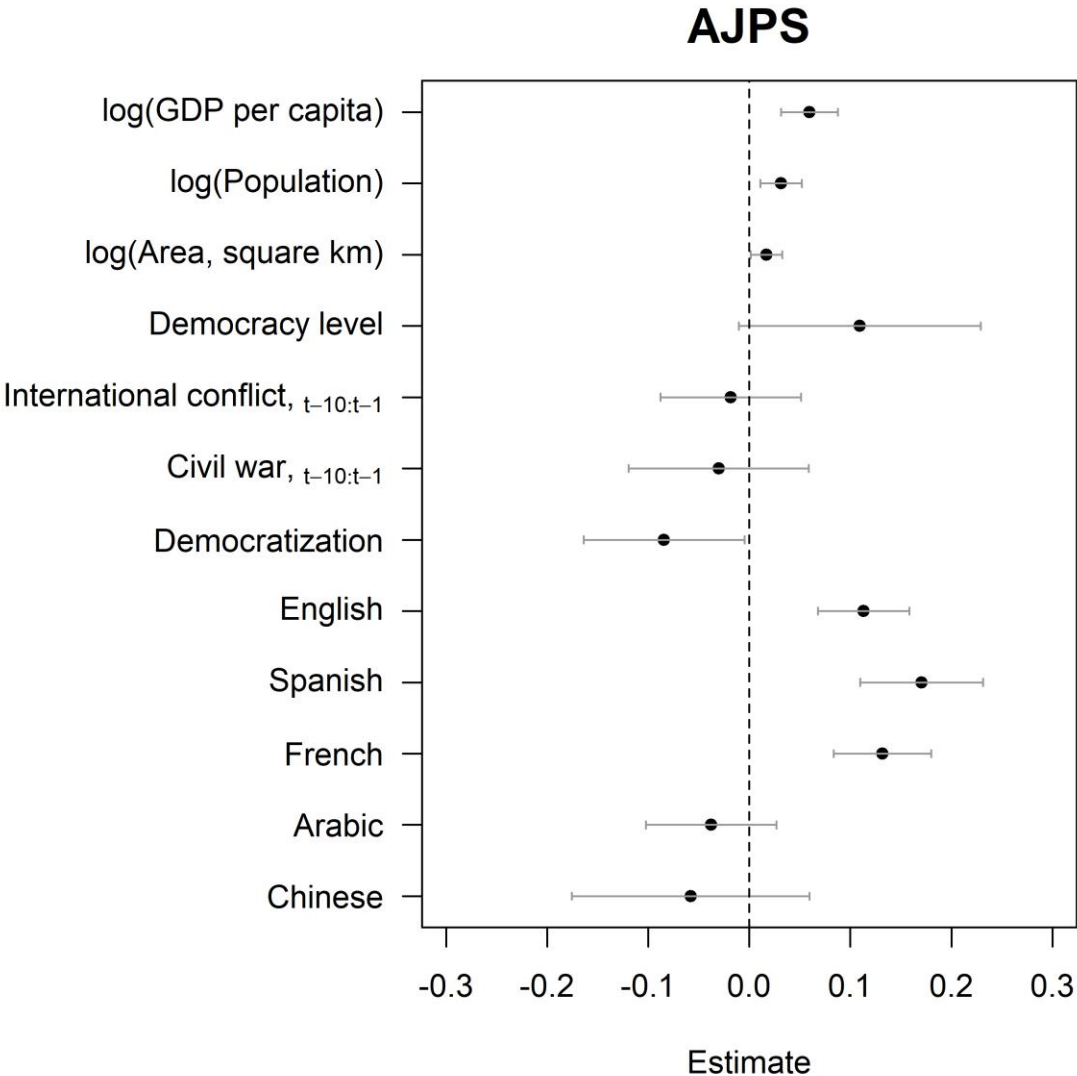


Figure E.1: OLS results for AJPS only.
(Year fixed effects not shown. Point estimate surrounded by 95% C.I.)

APSR

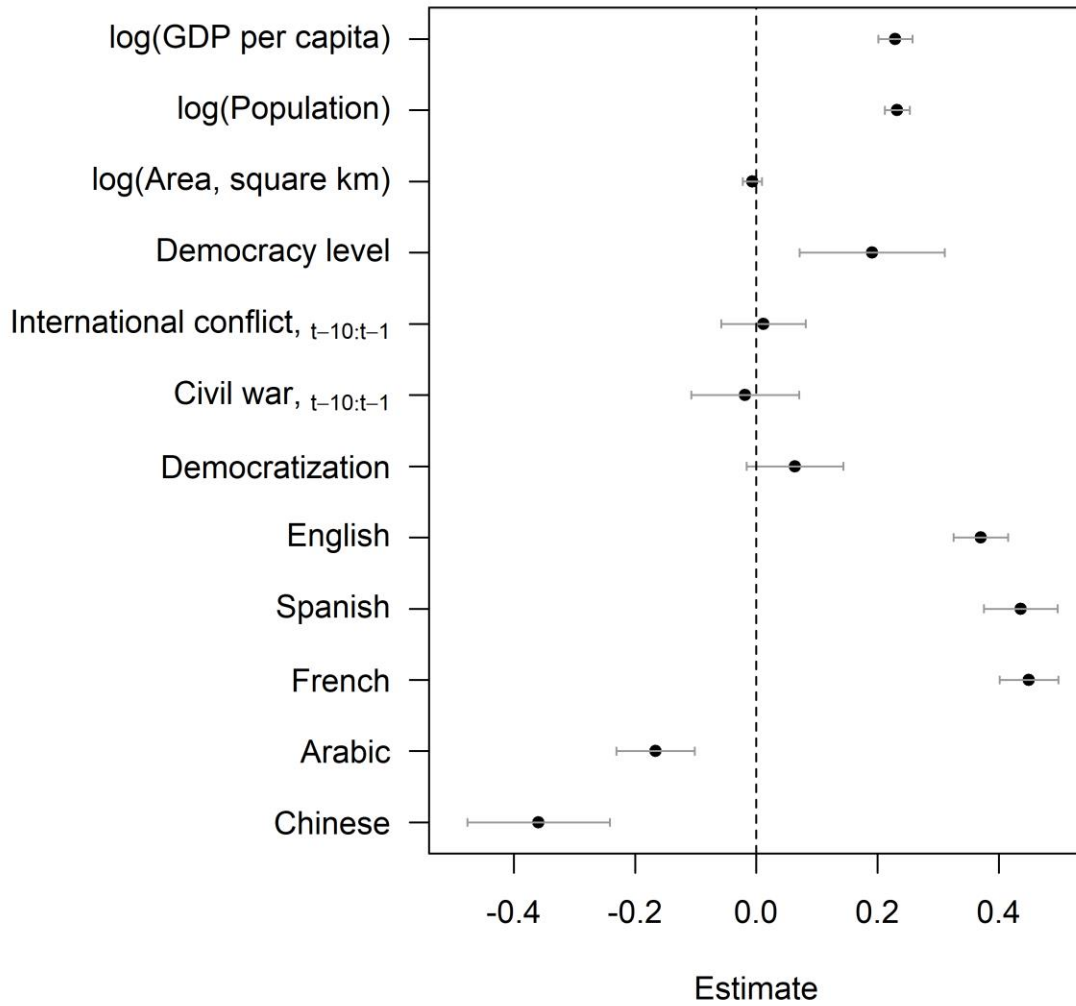


Figure E.2: OLS results for APSR only.
(Year fixed effects not shown. Point estimate surrounded by 95% C.I.)

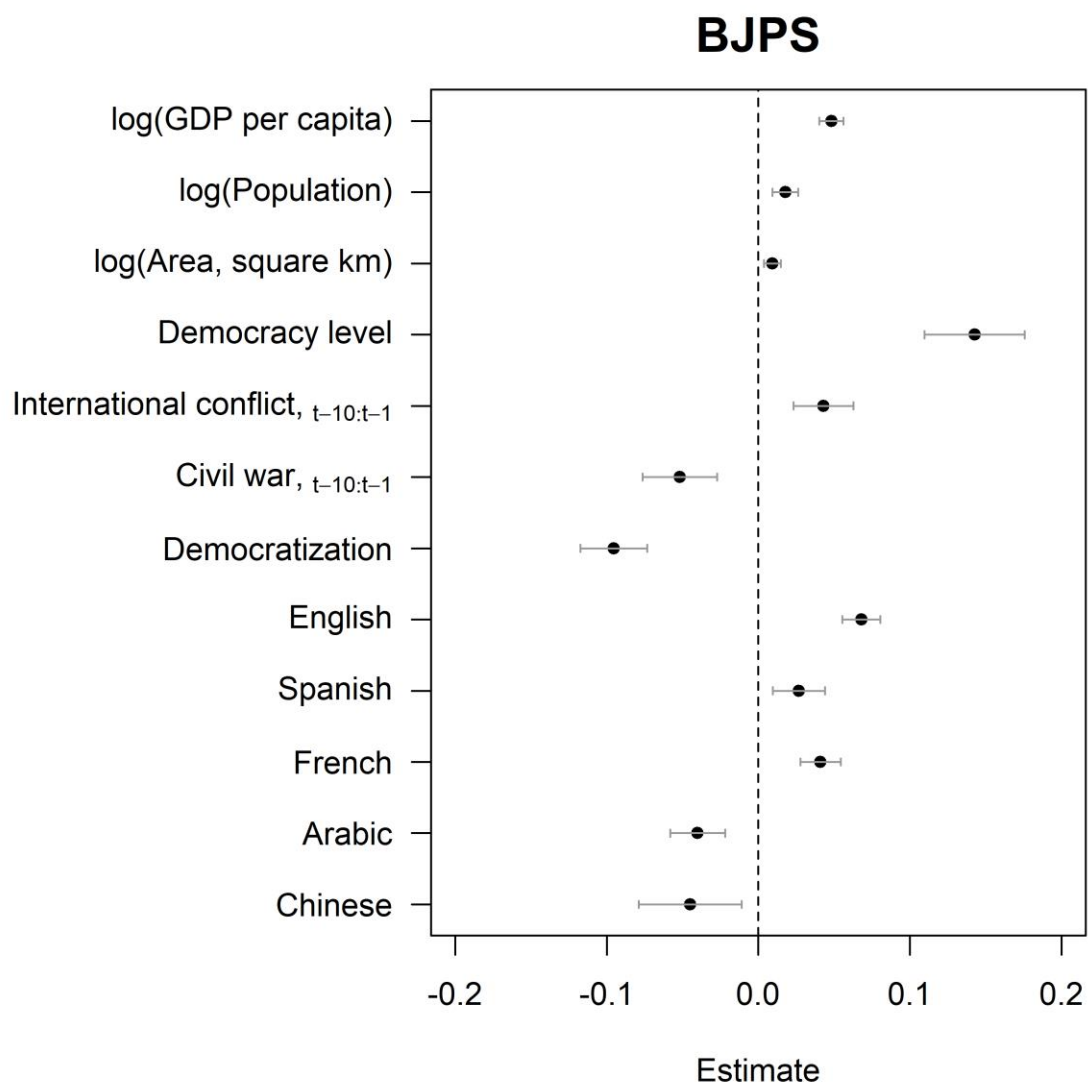


Figure E.3: OLS results for BJPS only.
(Year fixed effects not shown. Point estimate surrounded by 95% C.I.)

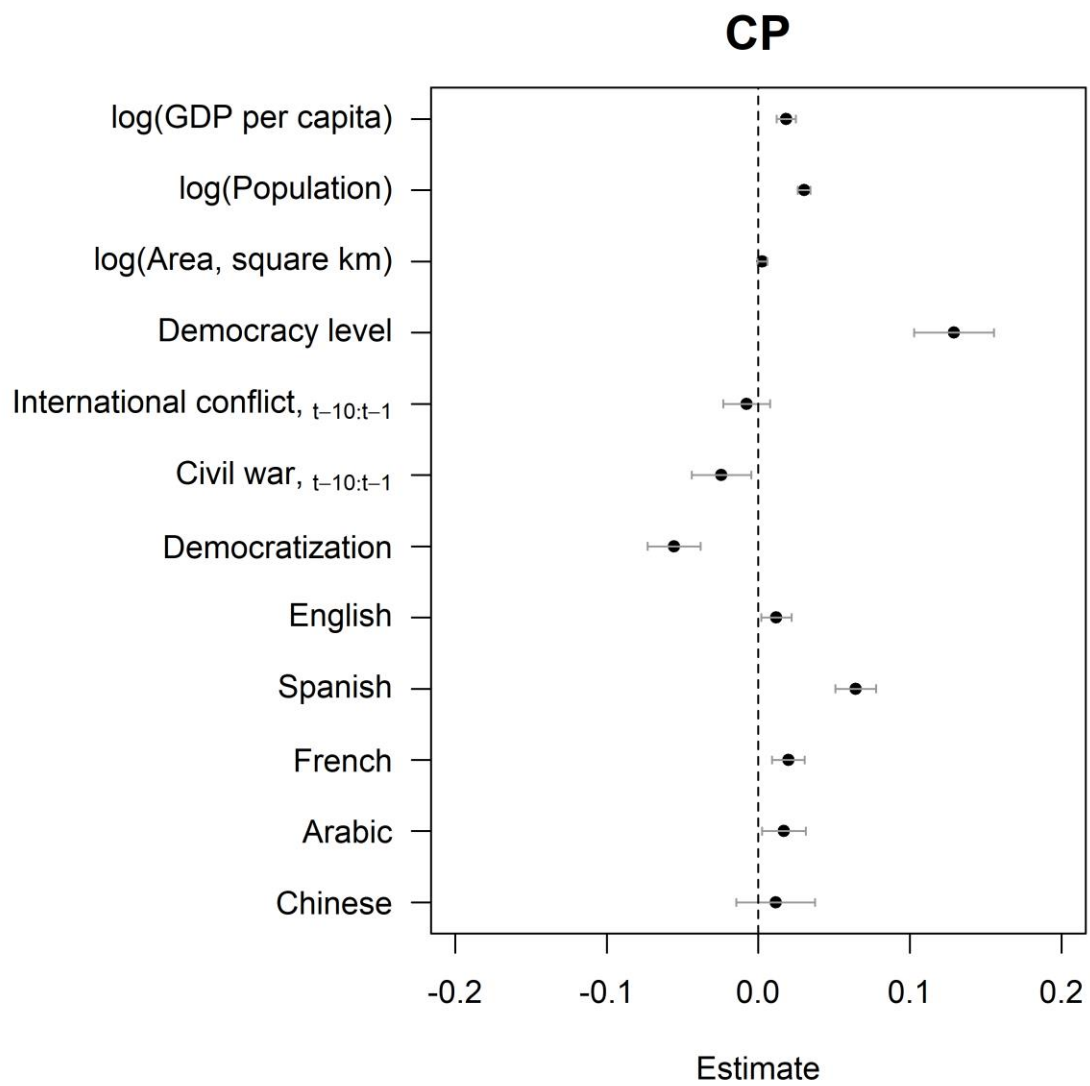


Figure E.4: OLS results for CP only.
(Year fixed effects not shown. Point estimate surrounded by 95% C.I.)

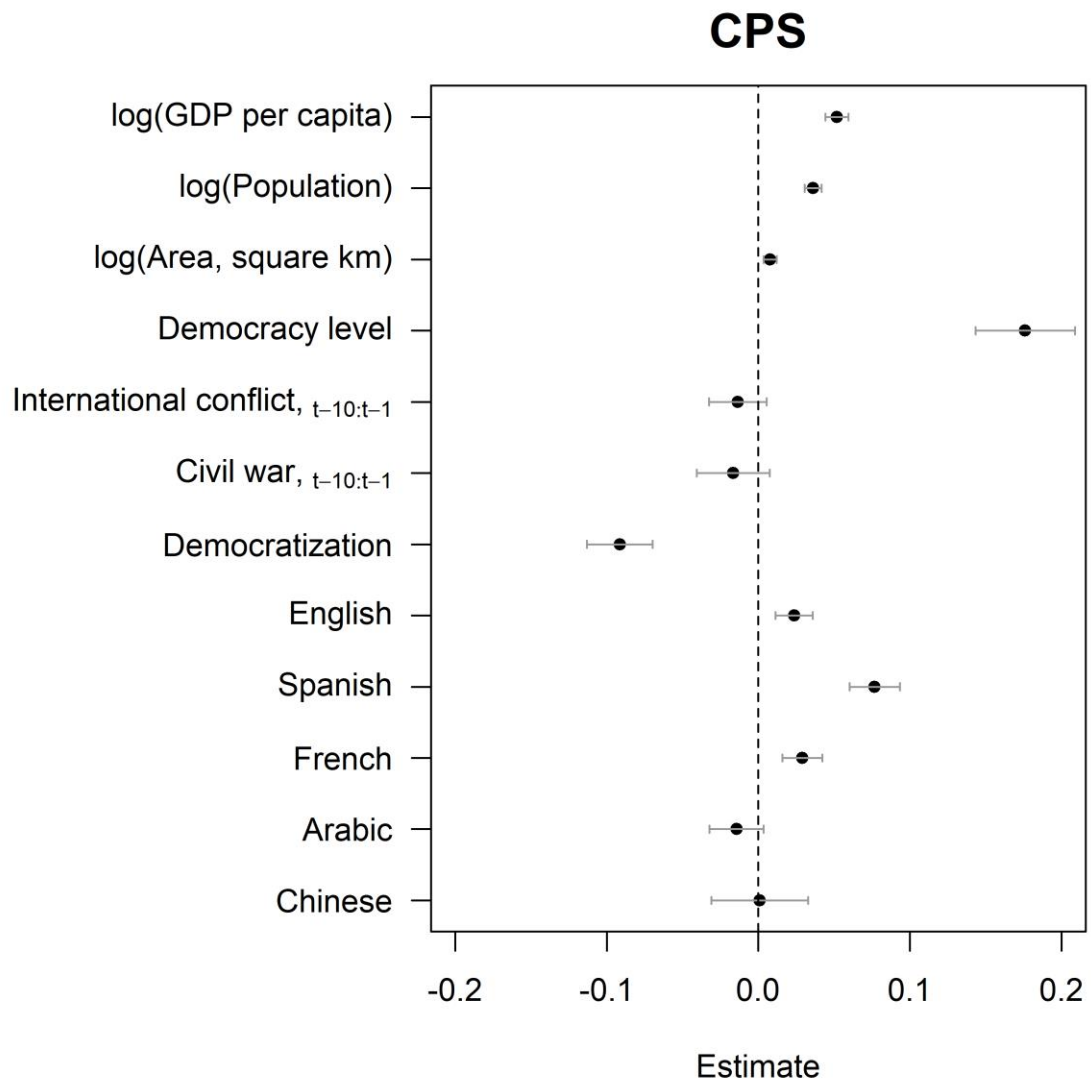


Figure E.5: OLS results for CPS only.
(Year fixed effects not shown. Point estimate surrounded by 95% C.I.)

IO

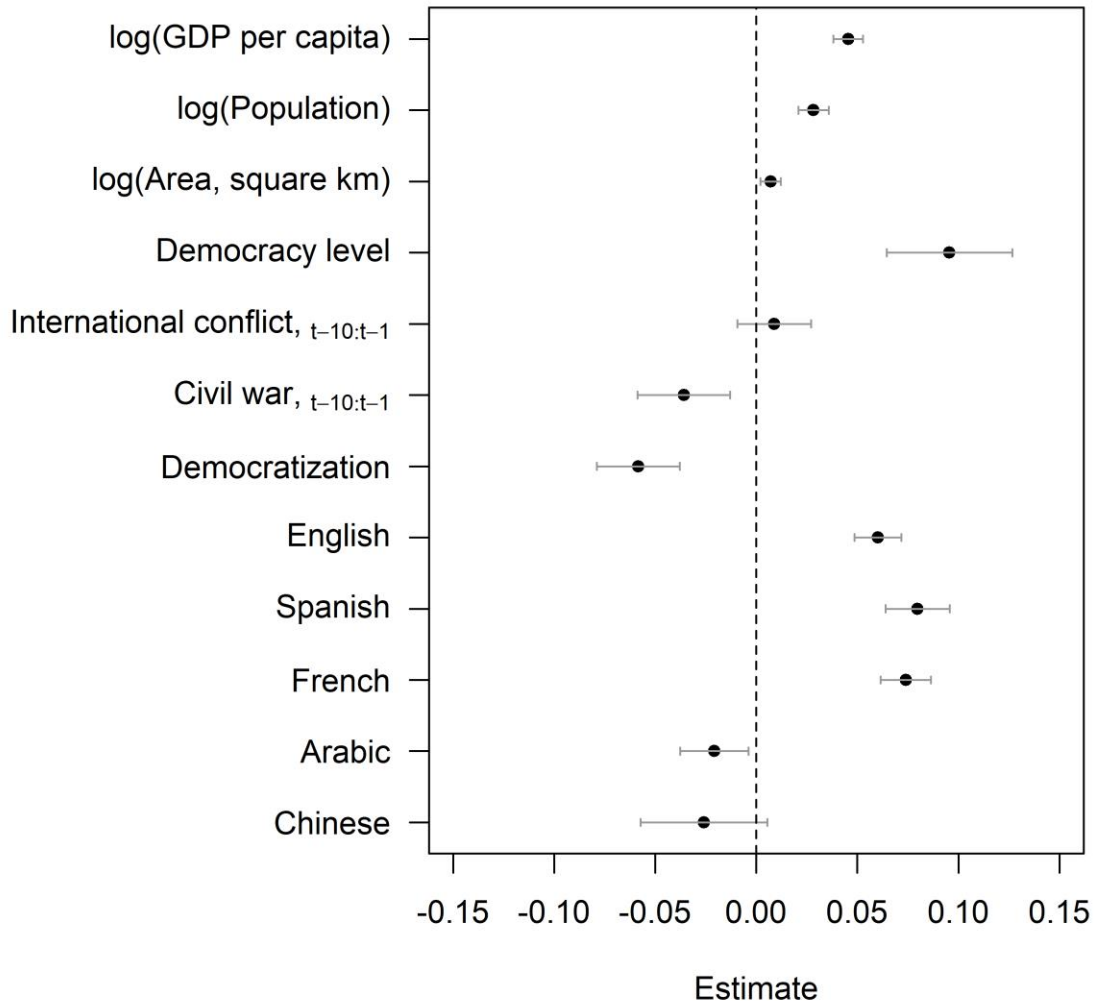


Figure E.6: OLS results for IO only.
(Year fixed effects not shown. Point estimate surrounded by 95% C.I.)

JOP

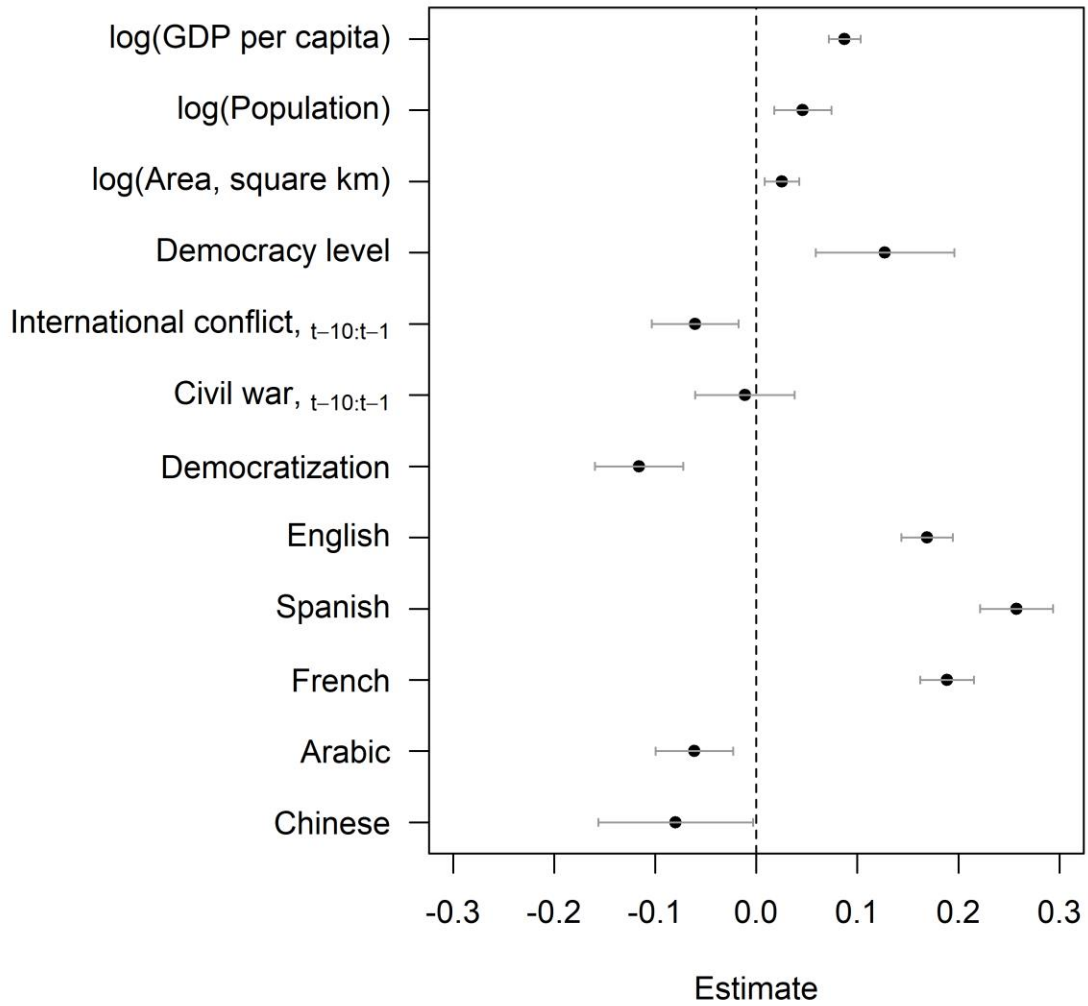


Figure E.7: OLS results for JOP only.
(Year fixed effects not shown. Point estimate surrounded by 95% C.I.)

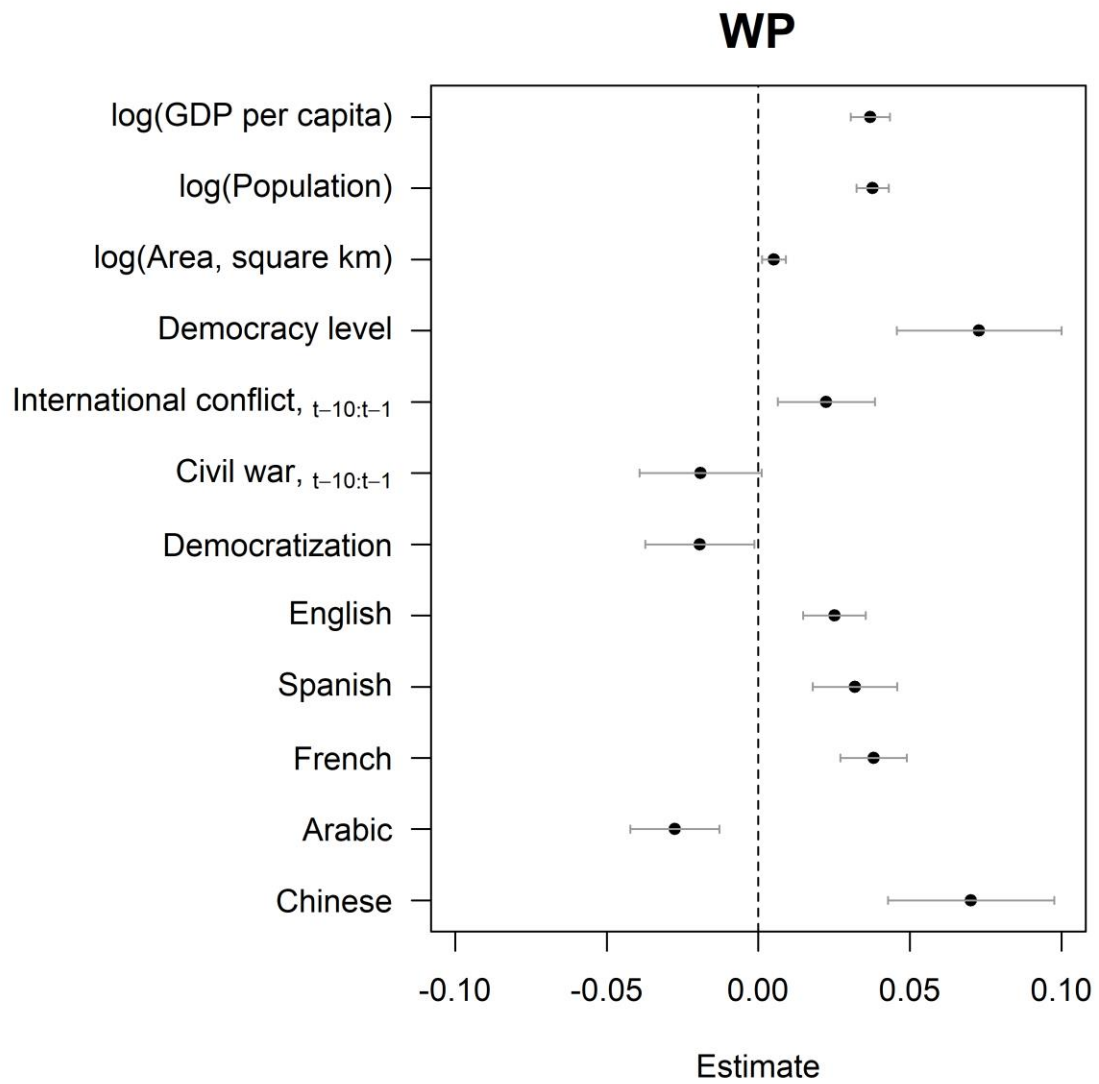


Figure E.8: OLS results for WP only.
(Year fixed effects not shown. Point estimate surrounded by 95% C.I.)