

Genetic factors in twinning process revealed by whole genome sequencing for a four-generation pedigree of monozygotic female twins

Shiqi Liu¹, Yaqiang Hong, Kai Cui, Jinxia Guan, Lu Han, Wei Chen, Zhe Xu, Kenan Gong, Yang Ou, Changqing Zeng, Sheng Li, Dake Zhang, Dawei Hu

Supplemental Figures

Figure S1: The coverage of whole genome sequencing for each individual.

Figure S2: Counts of variants in each individual and in each chromosome.

Figure S3: The interaction network of significantly enriched pathways for genes containing novel SNVs specific for MZ twins.

Figure S4 – S15: The result of variants validation for each individual.

Supplemental Tables

Table S1: MZ twins specific SNVs.

Table S2: MZ twins specific CNVs.

Table S3: The validated variants and the designed primers.

Supplemental Figures

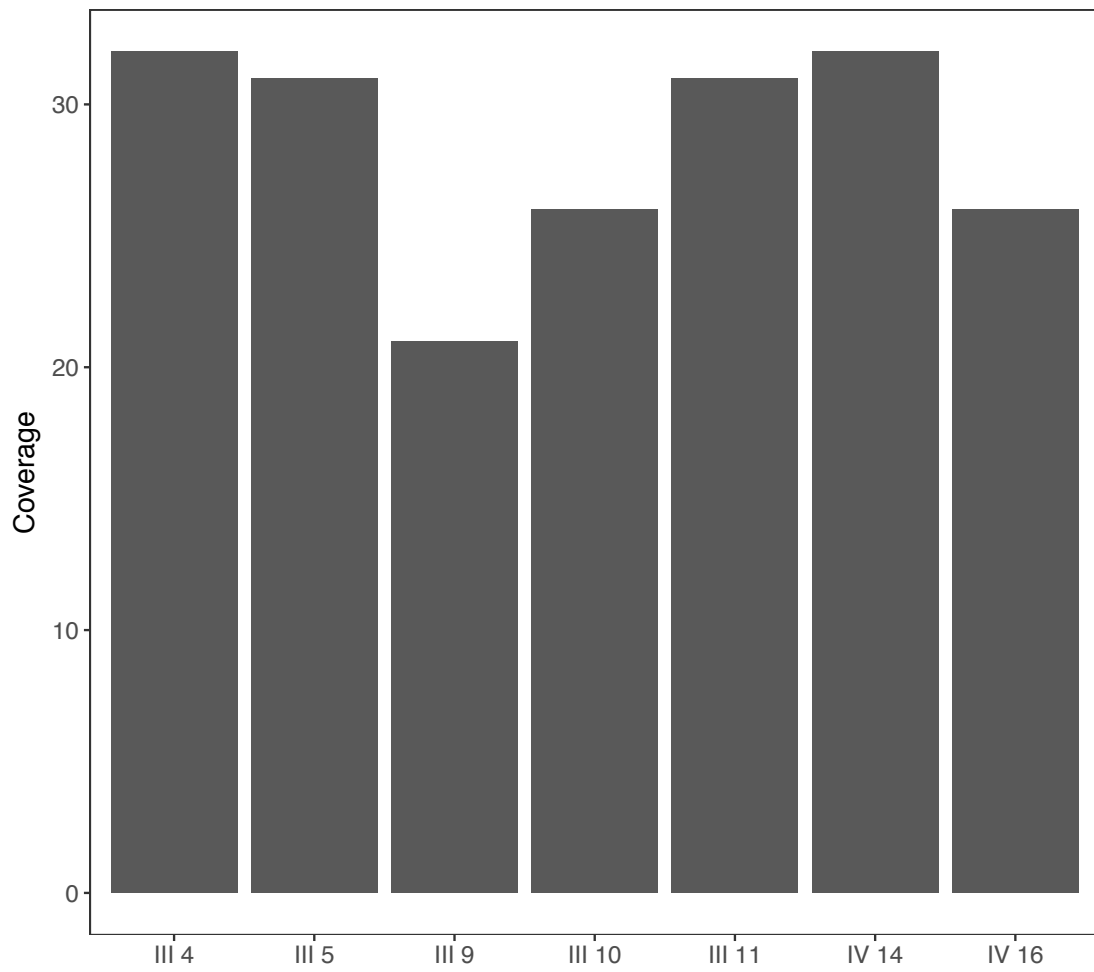


Figure S1. The coverage of whole genome sequencing for each individual.

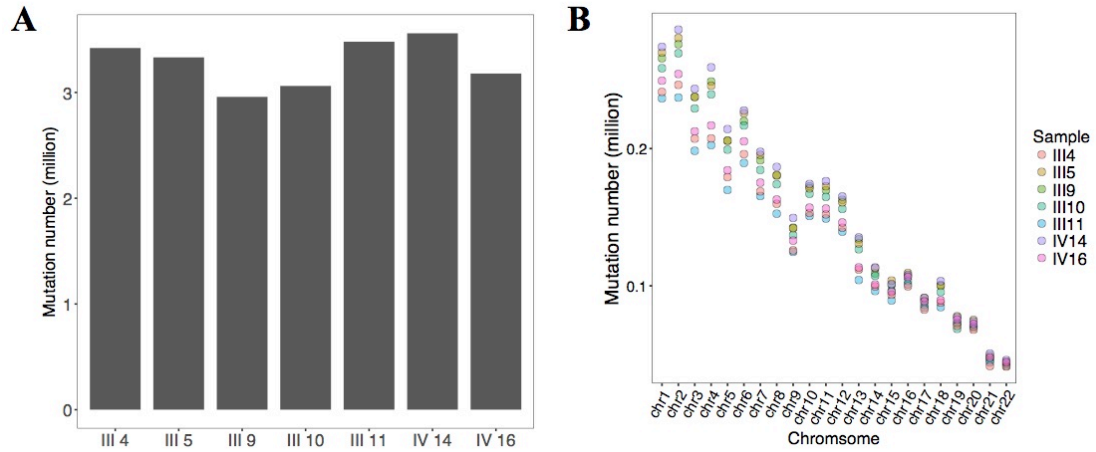


Figure S2. Counts of variants in each individual and in each chromosome. (A) About 3 million SNVs were detected in all individuals based on the whole genome sequencing. (B) In each chromosome, similar number of SNVs were also detected in all individuals, showing no bias in the sequencing.

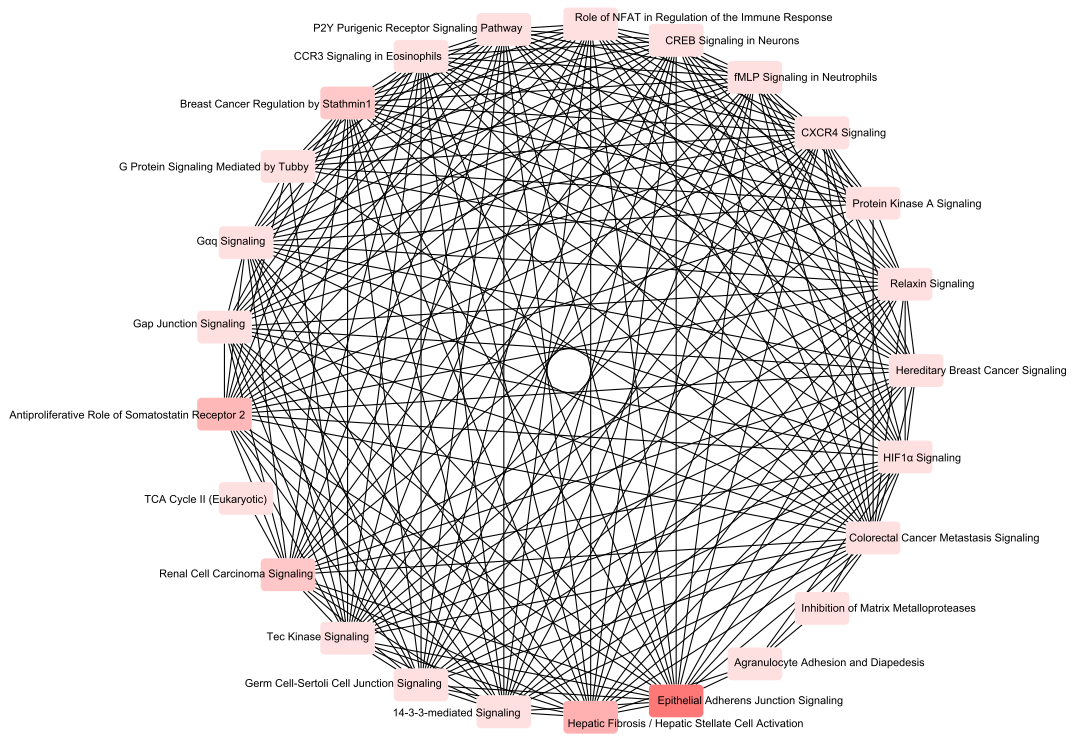


Figure S3. The interaction network of significantly enriched pathways for genes containing novel SNVs specific for MZ twins.

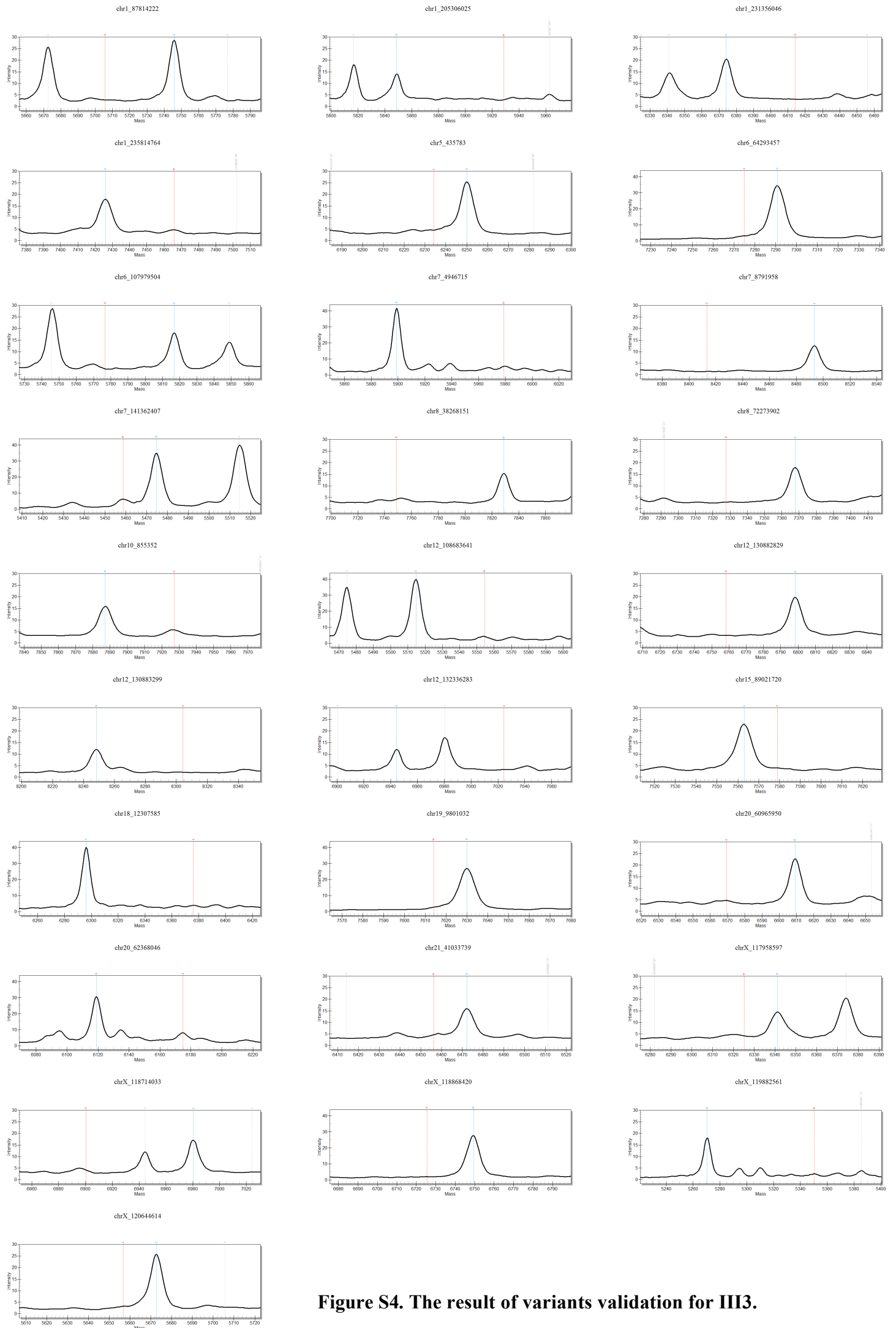


Figure S4. The result of variants validation for III3.

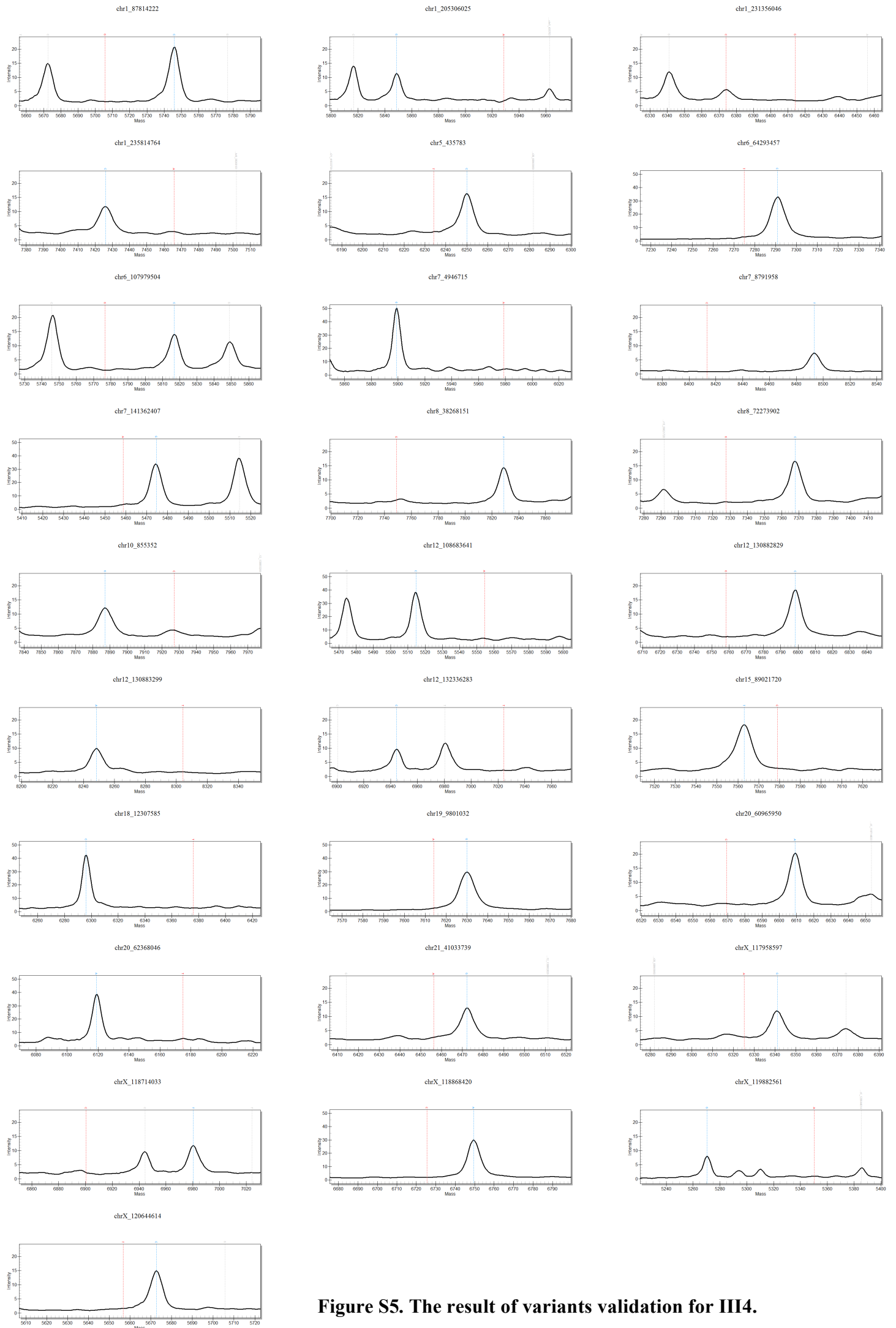


Figure S5. The result of variants validation for III4.

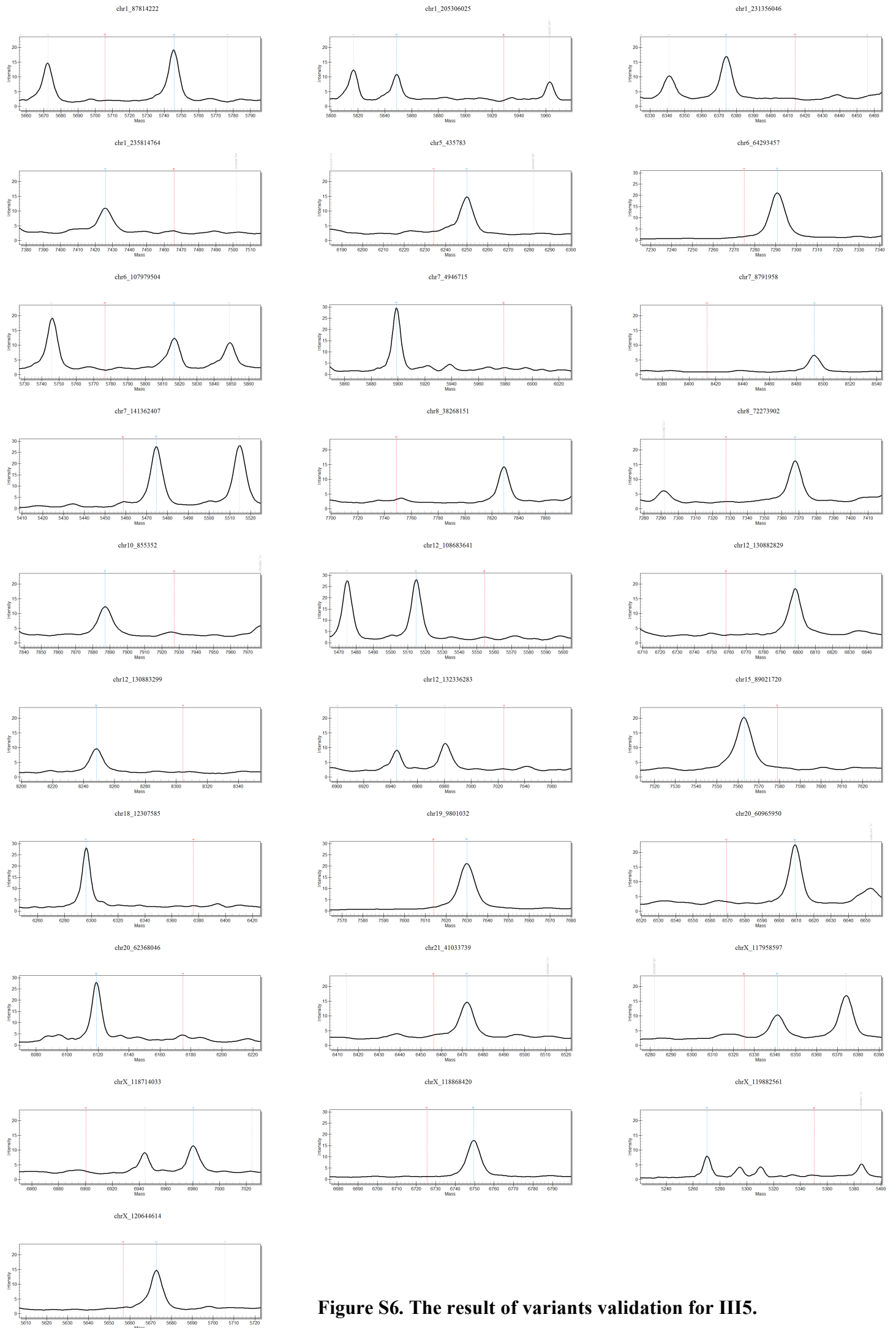


Figure S6. The result of variants validation for III5.

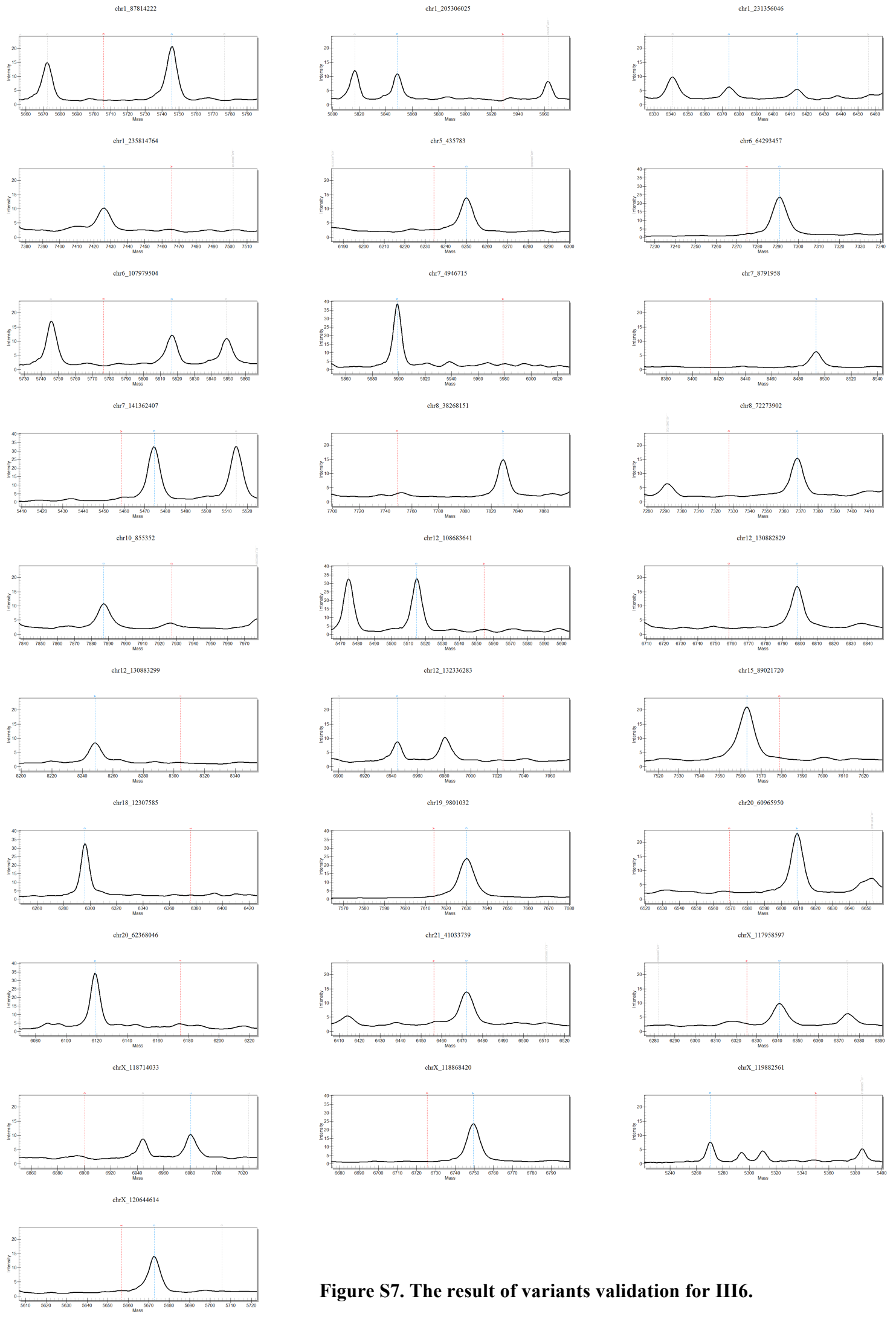


Figure S7. The result of variants validation for III6.

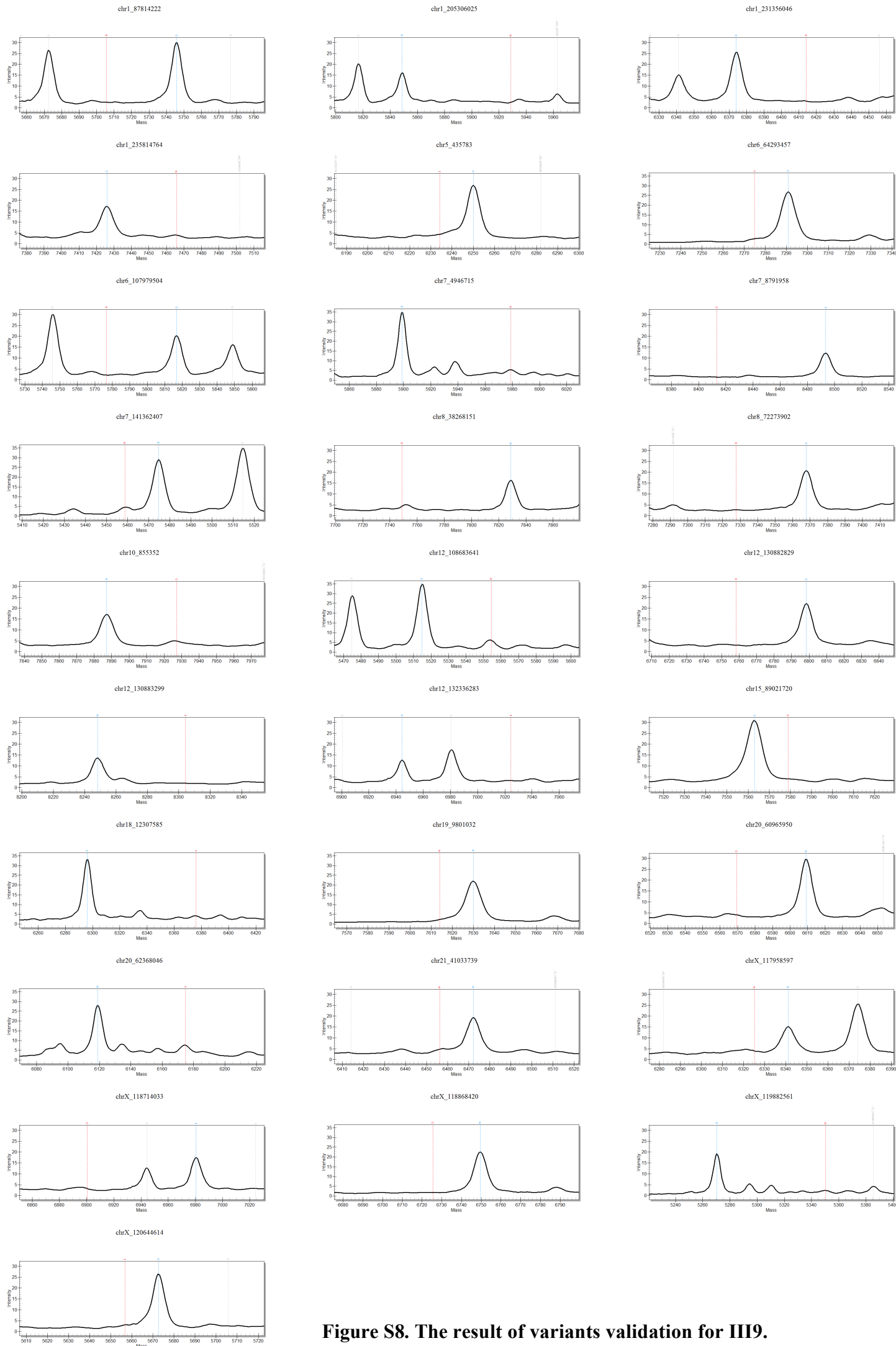


Figure S8. The result of variants validation for III9.

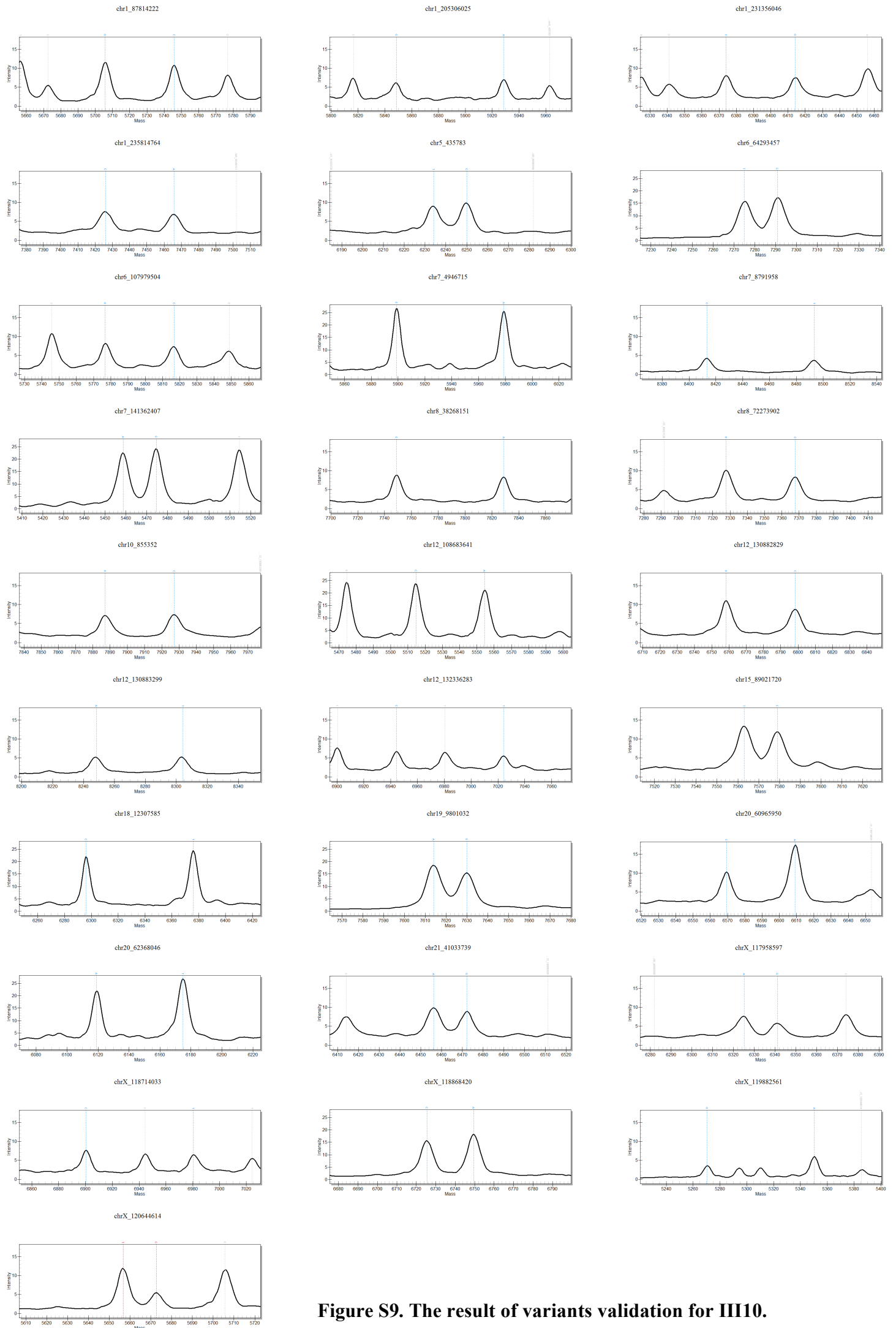


Figure S9. The result of variants validation for III10.

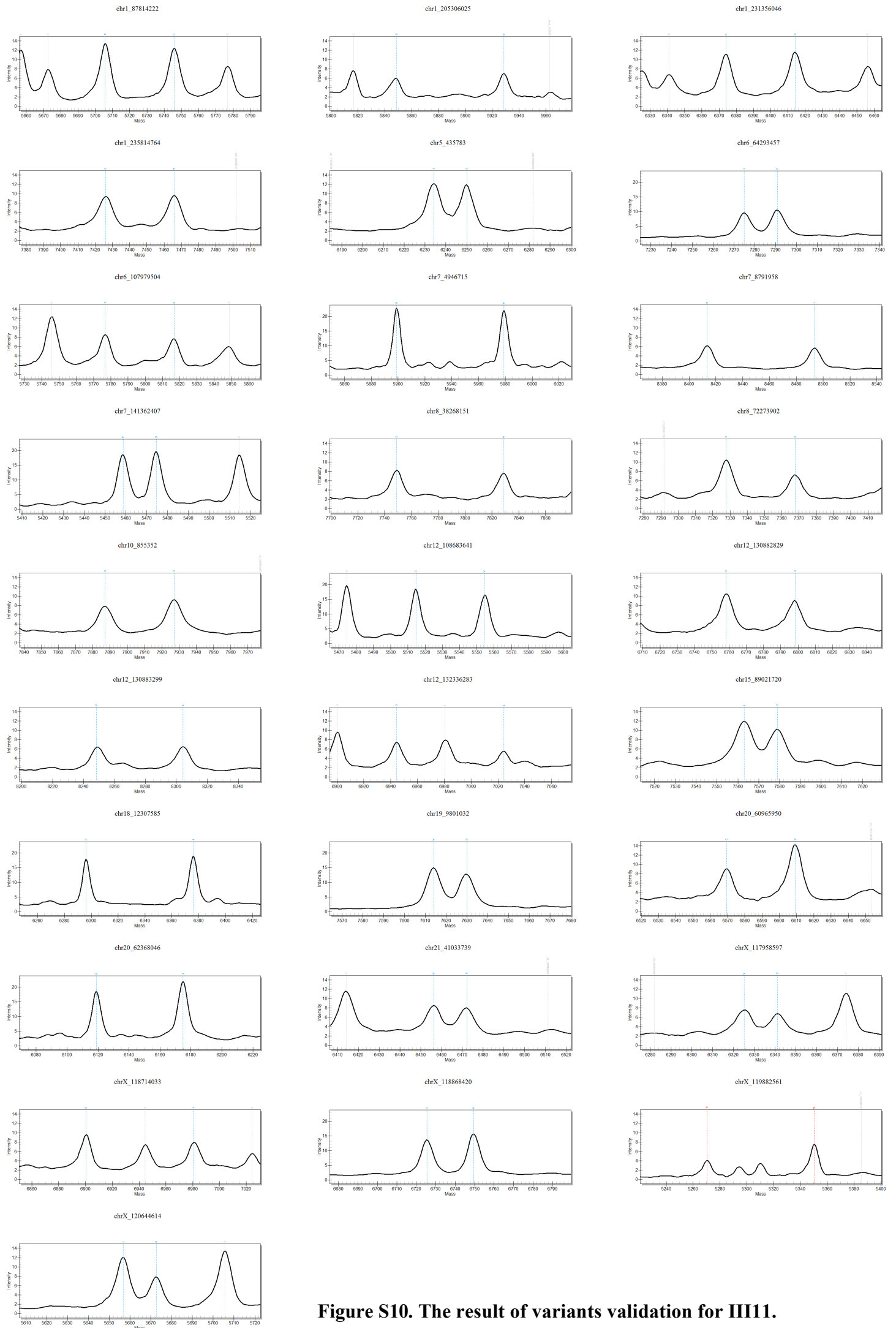


Figure S10. The result of variants validation for III11.

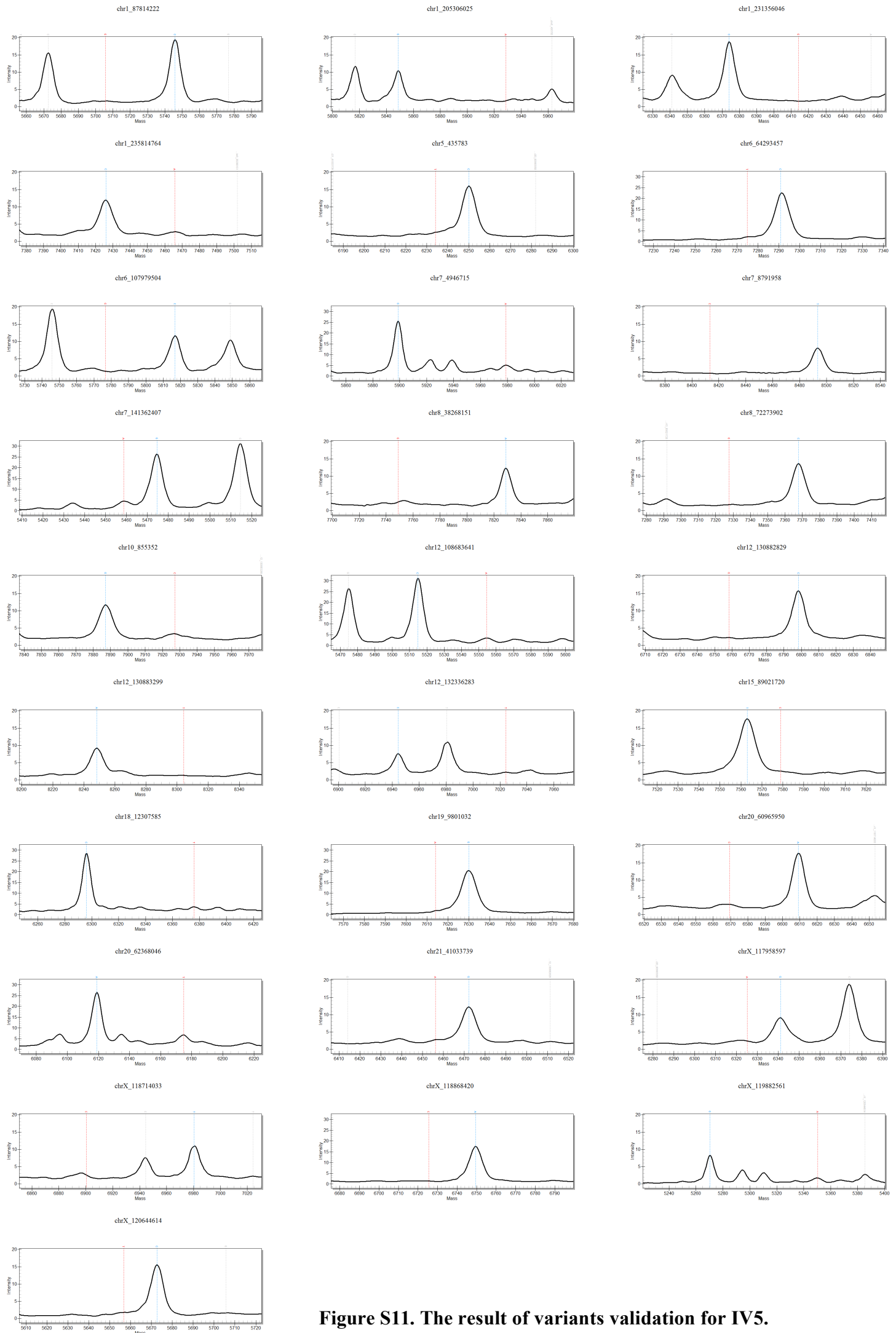


Figure S11. The result of variants validation for IV5.

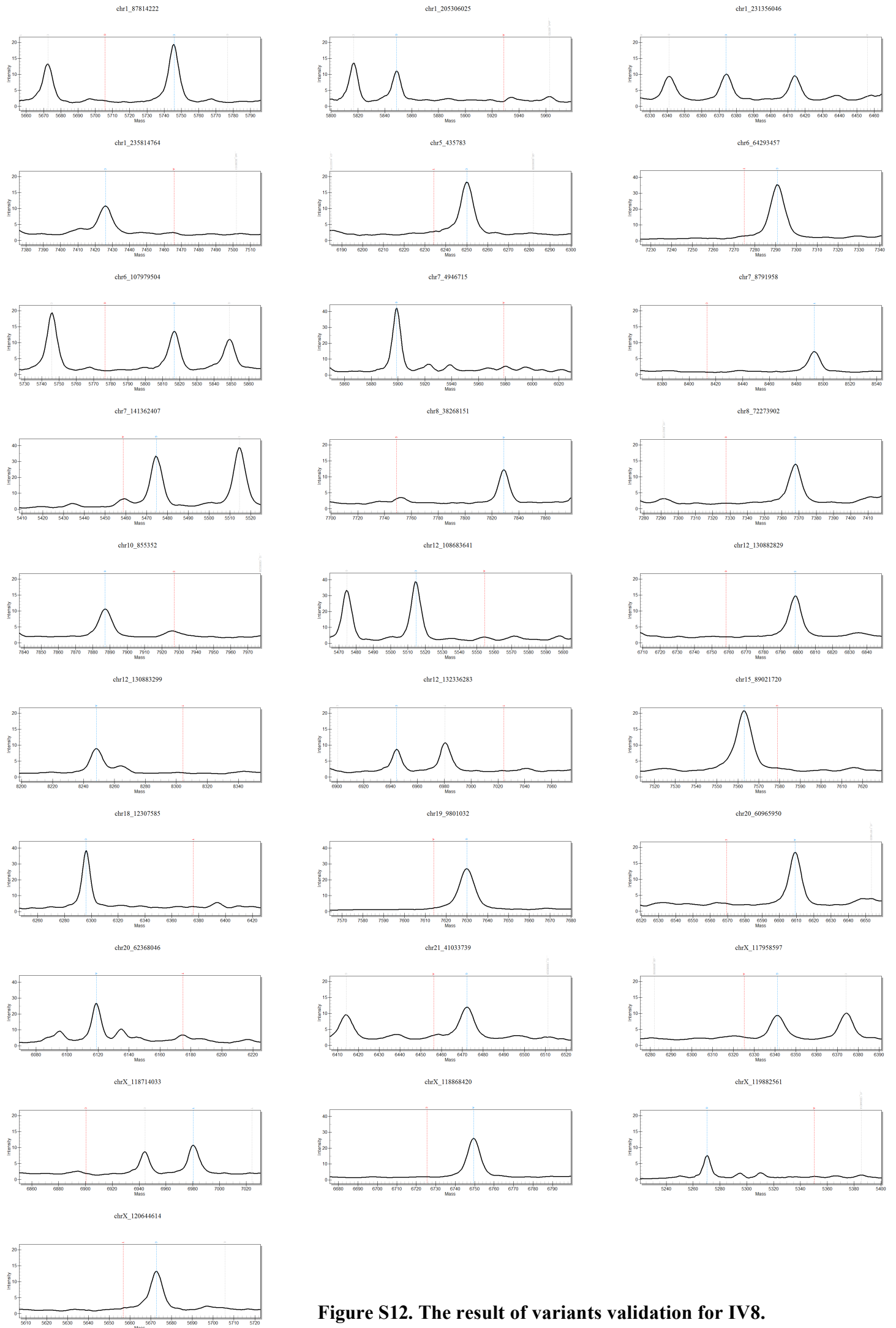


Figure S12. The result of variants validation for IV8.

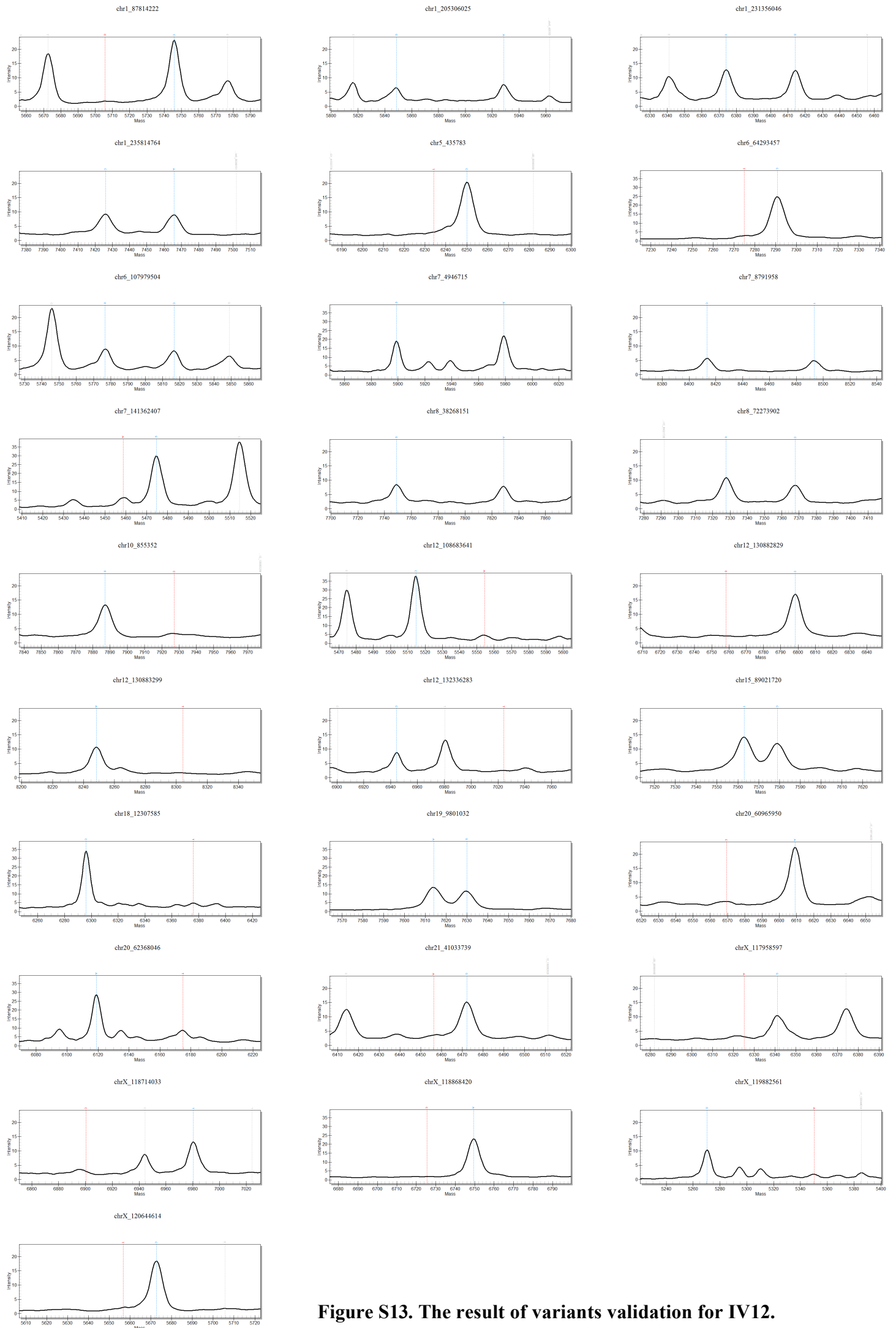


Figure S13. The result of variants validation for IV12.

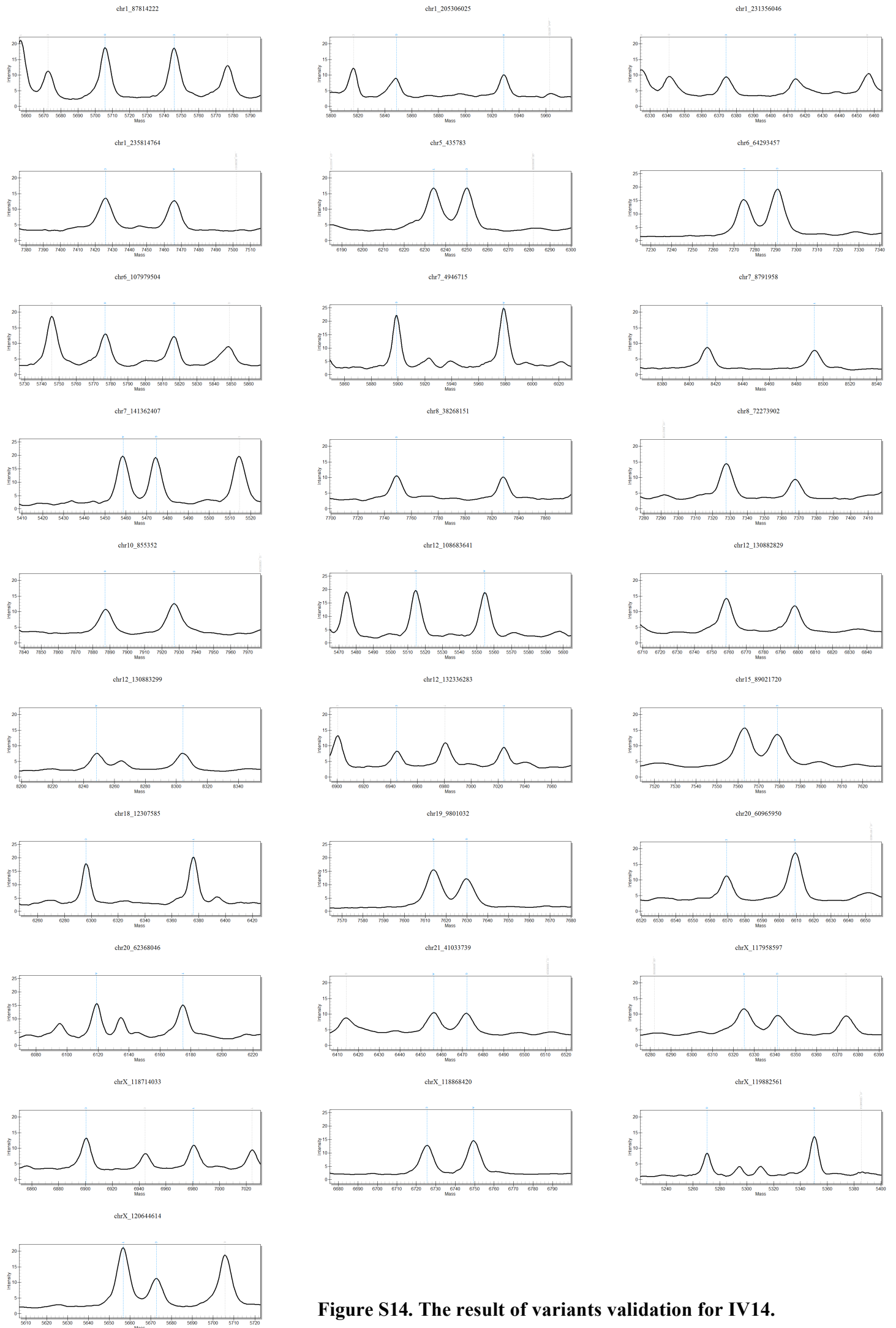


Figure S14. The result of variants validation for IV14.

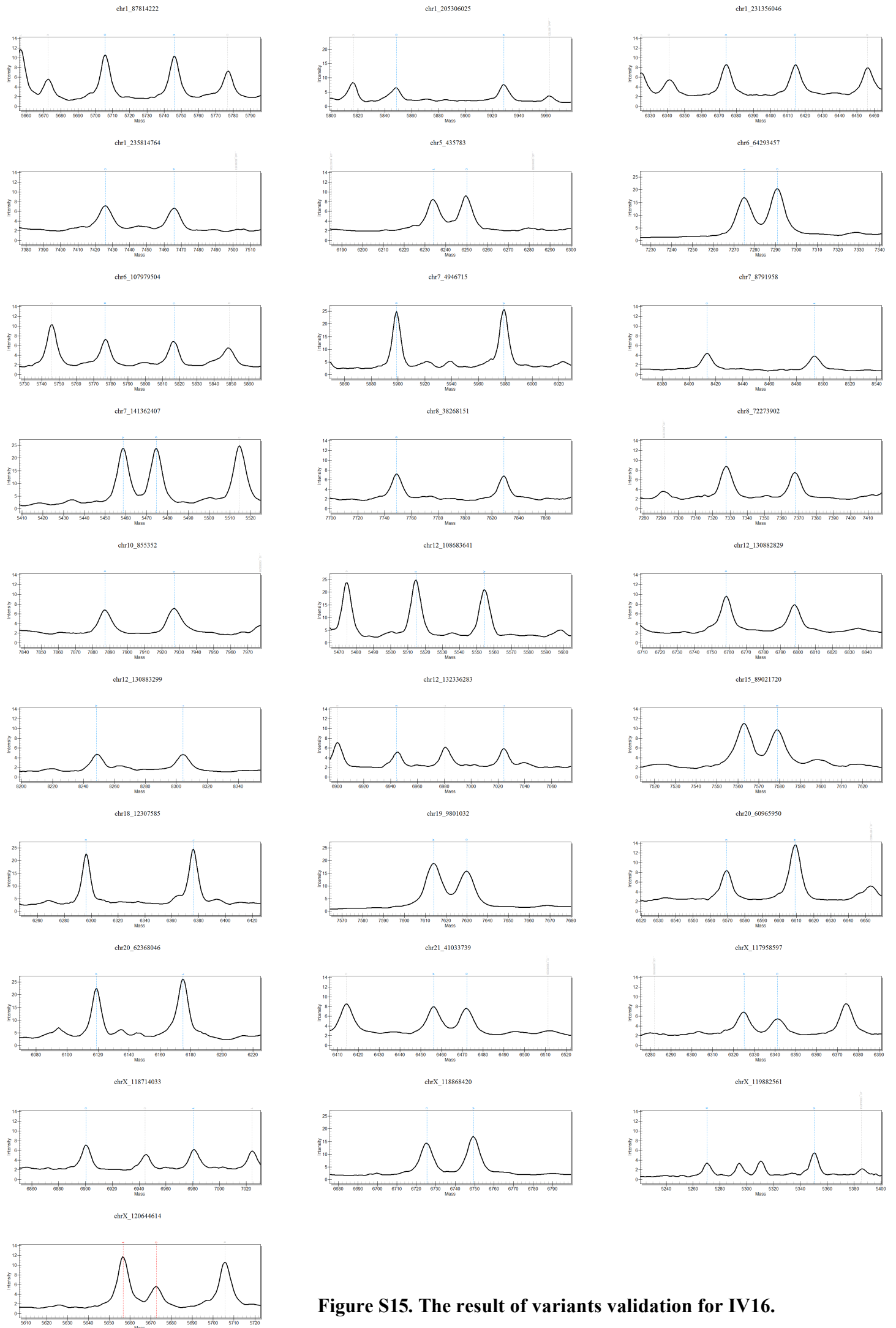


Figure S15. The result of variants validation for IV16.

Supplemental Tables

Table S1: MZ twins specific SNVs. As a separate file.

Table S2: MZ twins specific CNVs. As a separate file.

Table S2: The validated variants and the designed primers. As a separate file.