

## Data supplement

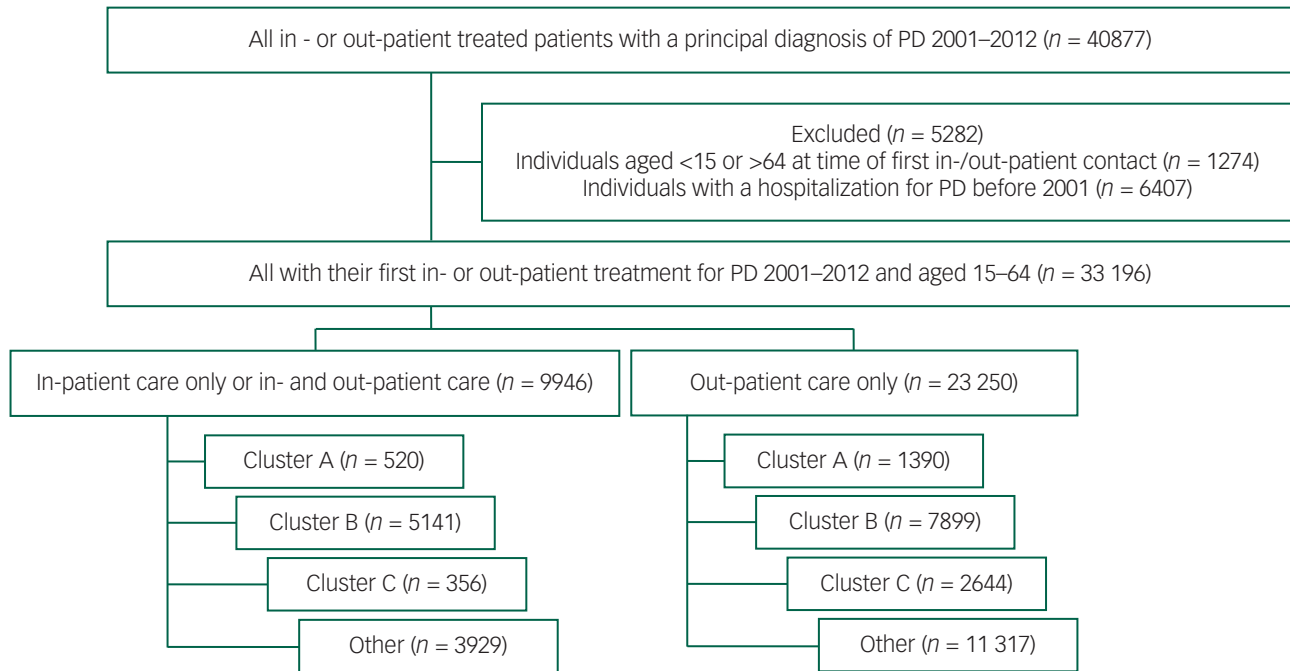


Fig. DS1 Flow chart for the study population.

Table DS1 Cohort characteristics for all patients with a principal diagnosis of personality disorder between 2001 and 2012 in Sweden

n	In-patient care				Out-patient care only			
	Women		Men		Women		Men	
	n	Deceased	n	Deceased	n	Deceased	n	Deceased
	6839	311 (5%)	3107	310 (10%)	14 297	295 (2%)	8953	390 (4%)
<i>Age at first contact</i>								
15–19	1238 (18%)		166 (5%)		1333 (9%)		320 (4%)	
20–24	1967 (29%)		550 (18%)		2787 (19%)		1188 (13%)	
25–34	1800 (26%)		967 (31%)		4077 (29%)		2607 (29%)	
35–44	1027 (15%)		747 (24%)		3186 (22%)		2362 (26%)	
45–54	579 (8%)		480 (15%)		1973 (14%)		1721 (19%)	
55–64	228 (3%)		197 (6%)		941 (7%)		755 (8%)	
<i>Diagnostic group</i>								
Cluster A	204 (3%)	16 (5%)	316 (10%)	35 (11%)	441 (3%)	13 (4%)	949 (11%)	49 (13%)
Cluster B	4201 (61%)	169 (54%)	940 (30%)	89 (29%)	6254 (44%)	94 (32%)	1645 (18%)	67 (17%)
Cluster C	217 (3%)	10 (3%)	139 (4%)	9 (3%)	1576 (11%)	26 (9%)	1068 (12%)	37 (9%)
Other	2217 (32%)	116 (37%)	1712 (55%)	177 (57%)	6026 (42%)	162 (55%)	5291 (59%)	237 (61%)
<i>Years from first discharge/out-patient visit to death</i>								
<1		75 (24%)		65 (21%)		60 (20%)		79 (20%)
1–2		87 (28%)		101 (33%)		79 (27%)		117 (30%)
3–4		66 (21%)		53 (17%)		65 (22%)		86 (22%)
5–9		73 (23%)		83 (27%)		84 (28%)		104 (27%)
10+		10 (3%)		8 (3%)		7 (2%)		4 (1%)

**Table DS2** Standardised mortality ratios (SMRs) with 95% confidence intervals (CIs) for all cases and by the different clusters in women and men

	Women				Men			
	Cluster A	Cluster B	Cluster C	Other	Cluster A	Cluster B	Cluster C	Other
<i>In-patient care</i>								
Total	7.4 (4.5–12.0)	13.3 (11.4–15.4)	6.4 (3.4–11.9)	9.5 (7.9–11.4)	6.7 (4.8–9.3)	12.8 (10.4–15.7)	4.8 (2.5–9.2)	9.7 (8.3–11.2)
Natural	3.1 (1.4–7.0)	3.6 (2.6–5.0)	3.0 (1.1–8.0)	4.7 (3.5–6.2)	3.1 (1.8–5.3)	6.4 (4.4–9.1)	2.8 (1.0–7.4)	5.1 (4.0–6.5)
Cancer	0.9 (0.1–6.3)	1.5 (0.7–3.0)	1.3 (0.2–9.0)	1.7 (0.9–3.2)	1.9 (0.6–5.8)	4.9 (2.5–9.8)	–	1.8 (0.9–3.5)
Cardiovascular	5.8 (1.4–23.0)	6.6 (3.6–12.3)	12.9 (4.2–40.0)	9.2 (5.6–15.0)	5.6 (2.8–11.1)	6.2 (3.2–11.9)	8.2 (3.1–21.9)	5.6 (3.8–8.2)
Other	6.7 (2.2–20.9)	6.1 (3.8–10.0)	–	8.4 (5.5–12.9)	1.7 (0.4–6.8)	8.1 (4.6–14.3)	–	8.7 (6.2–12.1)
Unnatural	39.4 (21.2–73.2)	41.8 (35.3–49.4)	26.0 (11.7–58.0)	32.6 (25.7–41.2)	21.2 (13.9–32.2)	25.0 (19.4–32.1)	11.7 (4.9–28.1)	22.4 (18.6–27.1)
Suicide	62.1 (29.6–130.2)	60.0 (48.9–73.7)	28.4 (9.2–88.0)	49.3 (37.1–65.4)	34.8 (20.6–58.8)	33.6 (23.6–47.8)	17.9 (5.8–55.6)	38.7 (30.7–48.8)
Deaths with undetermined intent	30.3 (4.3–215.4)	59.2 (39.0–89.9)	68.2 (17.1–272.8)	38.7 (20.8–71.9)	26.1 (8.4–80.8)	32.2 (16.8–61.9)	–	29.1 (17.9–47.6)
Other	18.5 (4.6–73.9)	16.4 (10.8–24.9)	10.5 (1.5–74.4)	12.4 (6.9–22.4)	9.6 (4.0–23.0)	16.6 (10.7–25.8)	9.5 (2.4–37.8)	8.3 (5.4–12.9)
<i>Out-patient care only</i>								
Total	2.2 (1.3–3.8)	4.3 (3.5–5.3)	2.1 (1.4–3.1)	4.0 (3.4–4.7)	3.6 (2.7–4.8)	5.7 (4.5–7.2)	2.7 (2.0–3.8)	3.7 (3.3–4.2)
Natural	1.7 (0.9–3.2)	1.9 (1.3–2.6)	1.5 (0.9–2.4)	2.5 (2.0–3.1)	1.8 (1.1–2.8)	3.1 (2.1–4.5)	1.4 (0.8–2.3)	2.3 (1.9–2.8)
Cancer	0.9 (0.3–2.9)	1.1 (0.6–1.9)	1.1 (0.5–2.3)	1.6 (1.2–2.3)	1.0 (0.4–2.7)	1.0 (0.3–3.2)	1.2 (0.5–3.0)	1.3 (0.9–2.0)
Cardiovascular	4.0 (1.5–10.7)	4.1 (2.3–7.3)	–	3.8 (2.5–5.7)	1.4 (0.6–3.3)	3.4 (1.8–6.6)	1.1 (0.4–2.9)	2.4 (1.8–3.3)
Other	1.7 (0.4–6.7)	2.3 (1.2–4.2)	3.6 (1.9–6.9)	3.8 (2.7–5.4)	3.3 (1.8–6.2)	5.1 (2.9–8.7)	2.0 (0.9–4.4)	3.5 (2.7–4.6)
Unnatural	6.7 (2.5–17.8)	14.5 (11.3–18.7)	6.7 (3.6–12.4)	13.2 (10.5–16.5)	10.3 (7.2–14.8)	11.5 (8.5–15.5)	7.7 (5.1–11.7)	8.3 (7.0–9.9)
Suicide	–	6.5 (3.8–11.3)	2.9 (0.7–11.4)	5.0 (2.9–8.6)	6.3 (3.0–13.1)	13.4 (8.6–21.1)	6.3 (3.0–13.2)	7.1 (5.2–9.7)
Deaths with undetermined intent	10.0 (1.4–71.0)	22.0 (12.2–39.7)	5.0 (0.7–35.6)	16.5 (9.4–29.1)	21.8 (10.4–45.8)	14.2 (6.4–31.6)	18.9 (8.5–42.0)	12.6 (8.2–19.3)
Other	2.1 (0.7–6.5)	21.2 (15.4–29.3)	11.3 (5.4–23.7)	21.4 (16.3–28.3)	11.2 (6.9–18.3)	9.3 (5.8–15.0)	6.3 (3.3–12.1)	8.3 (6.4–10.6)