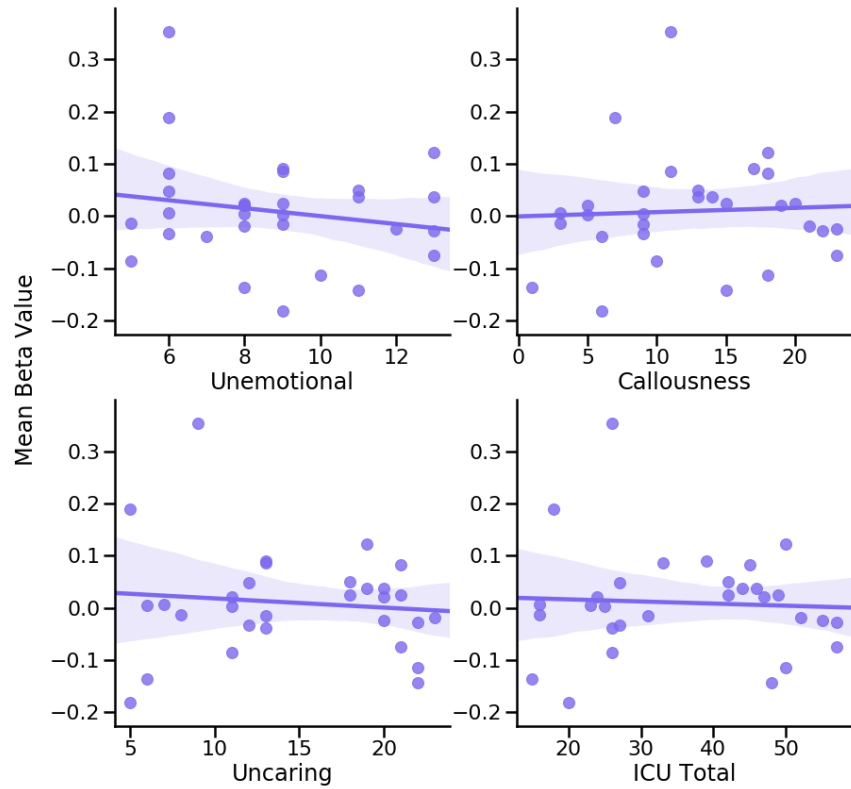
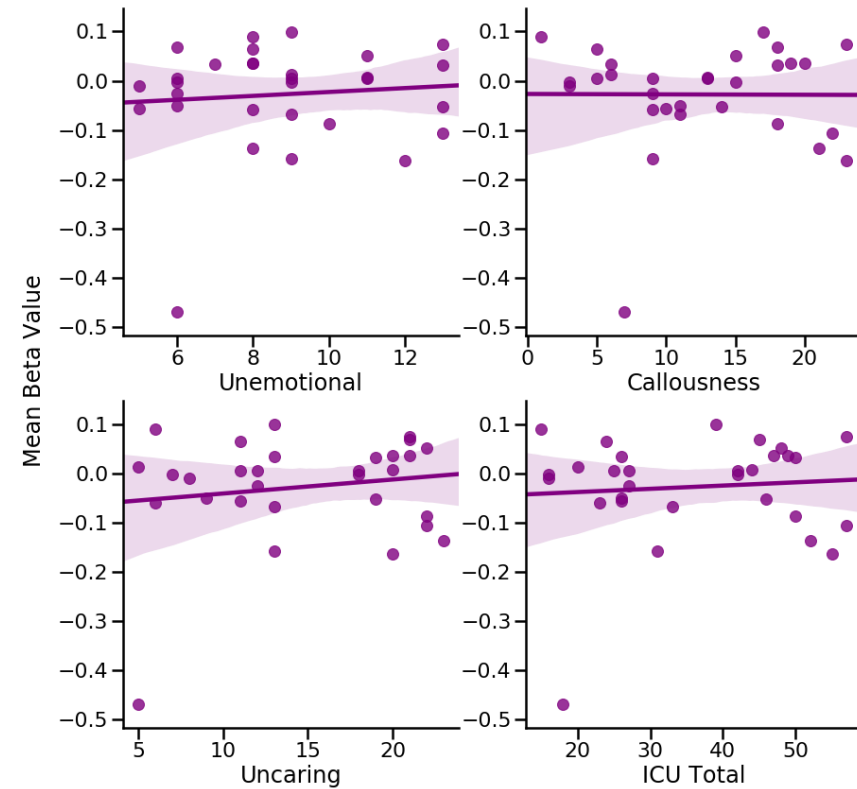


**Supplementary Figures 1A-H.** Scatterplots of mean amygdala activation to fearful faces and CU traits across conditions using the Harvard Oxford Parcellation (baseline: blue; afraid for self: green; afraid for you: red-orange; afraid of you: purple)

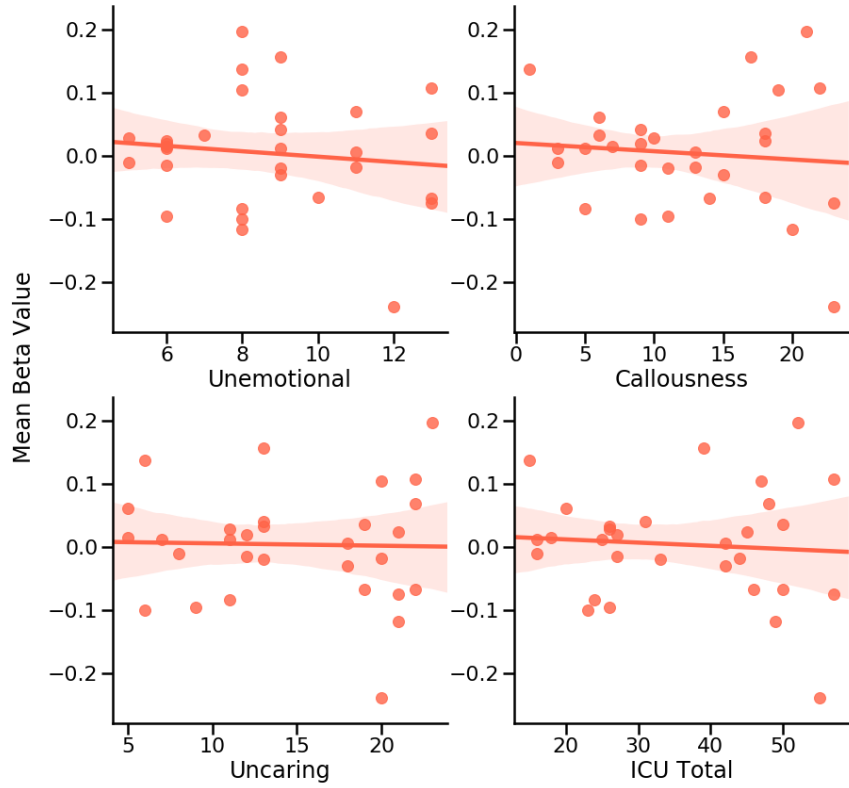
Baseline Faces (Right Amygdala)



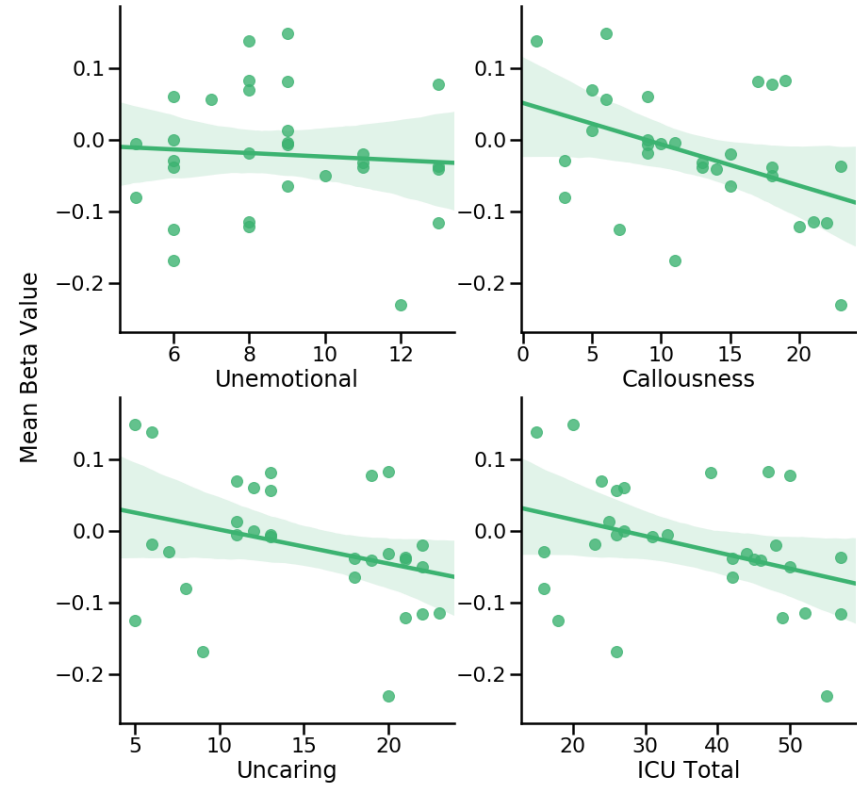
"Afraid Of You" Faces (Right Amygdala)



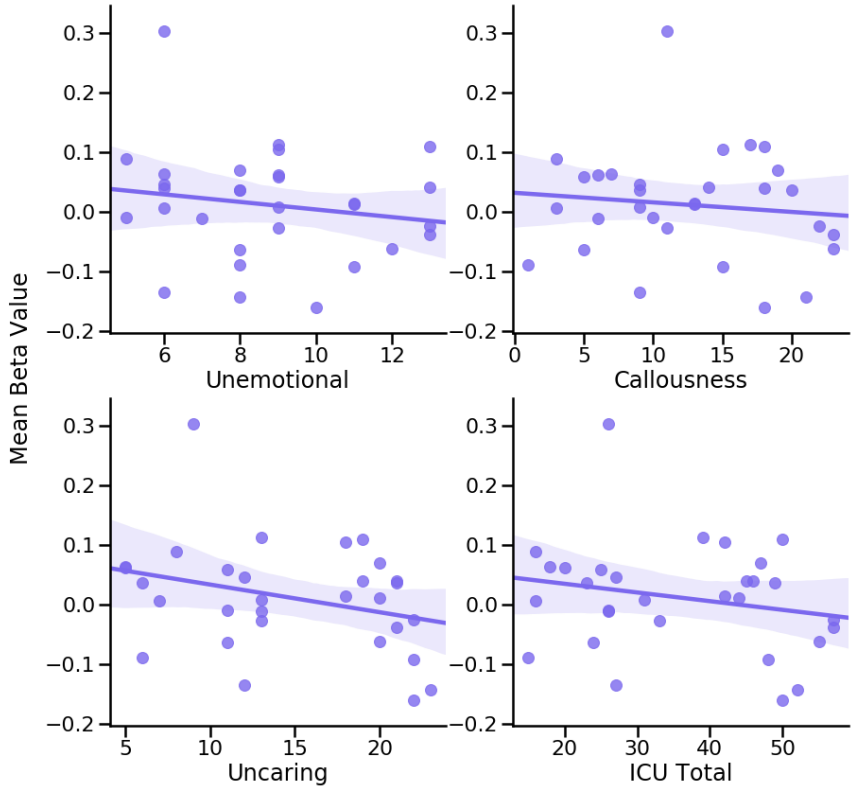
"Afraid For You" Faces (Right Amygdala)



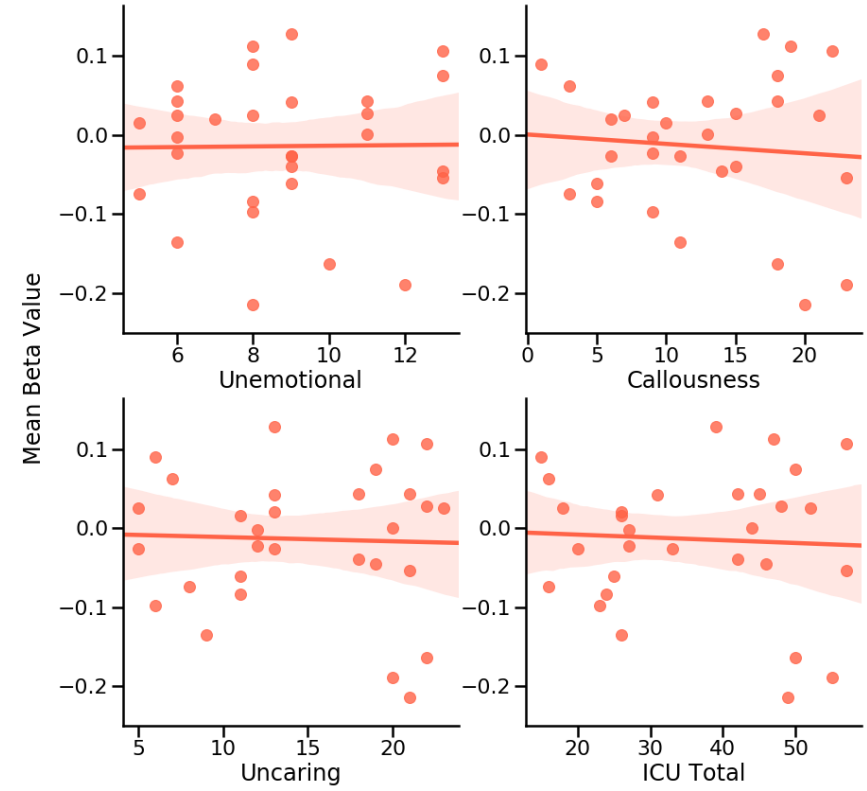
"Afraid For Self" Faces (Right Amygdala)



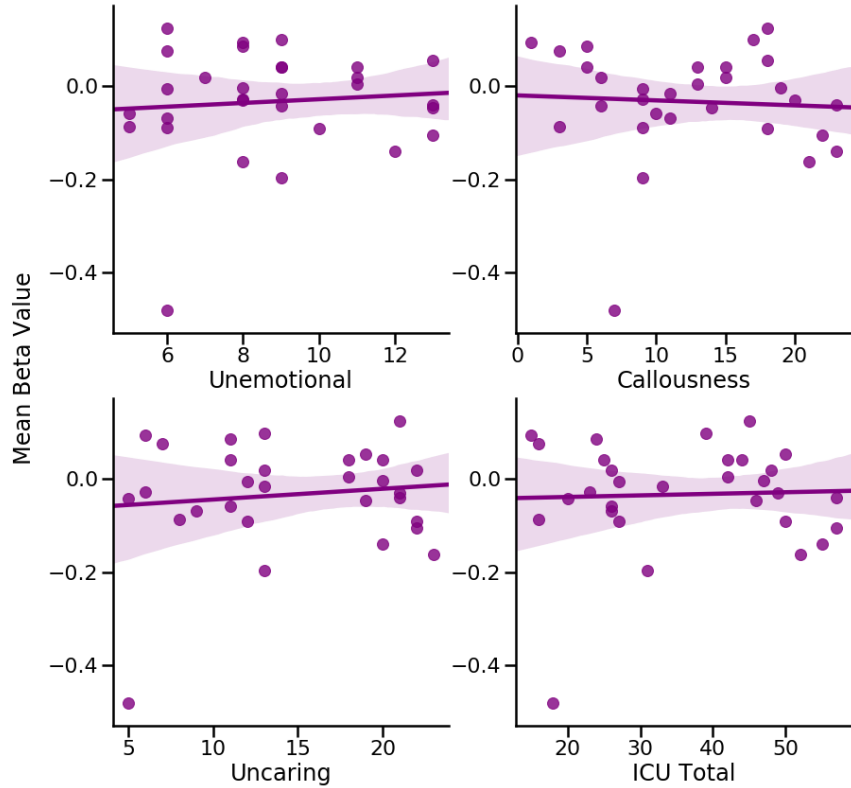
Baseline Faces (Left Amygdala)



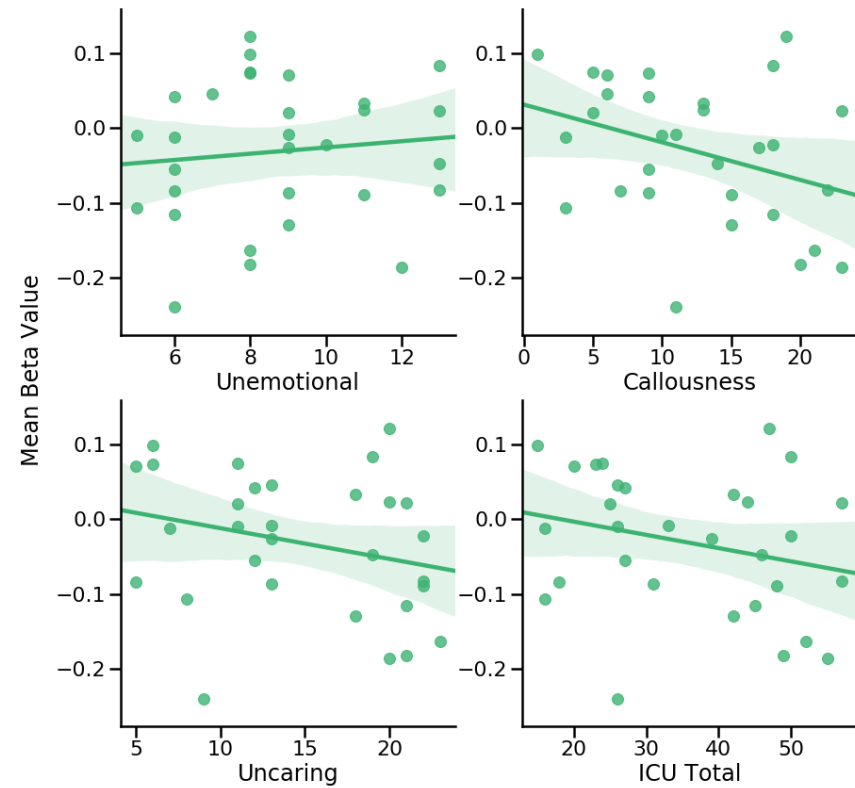
"Afraid For You" Faces (Left Amygdala)



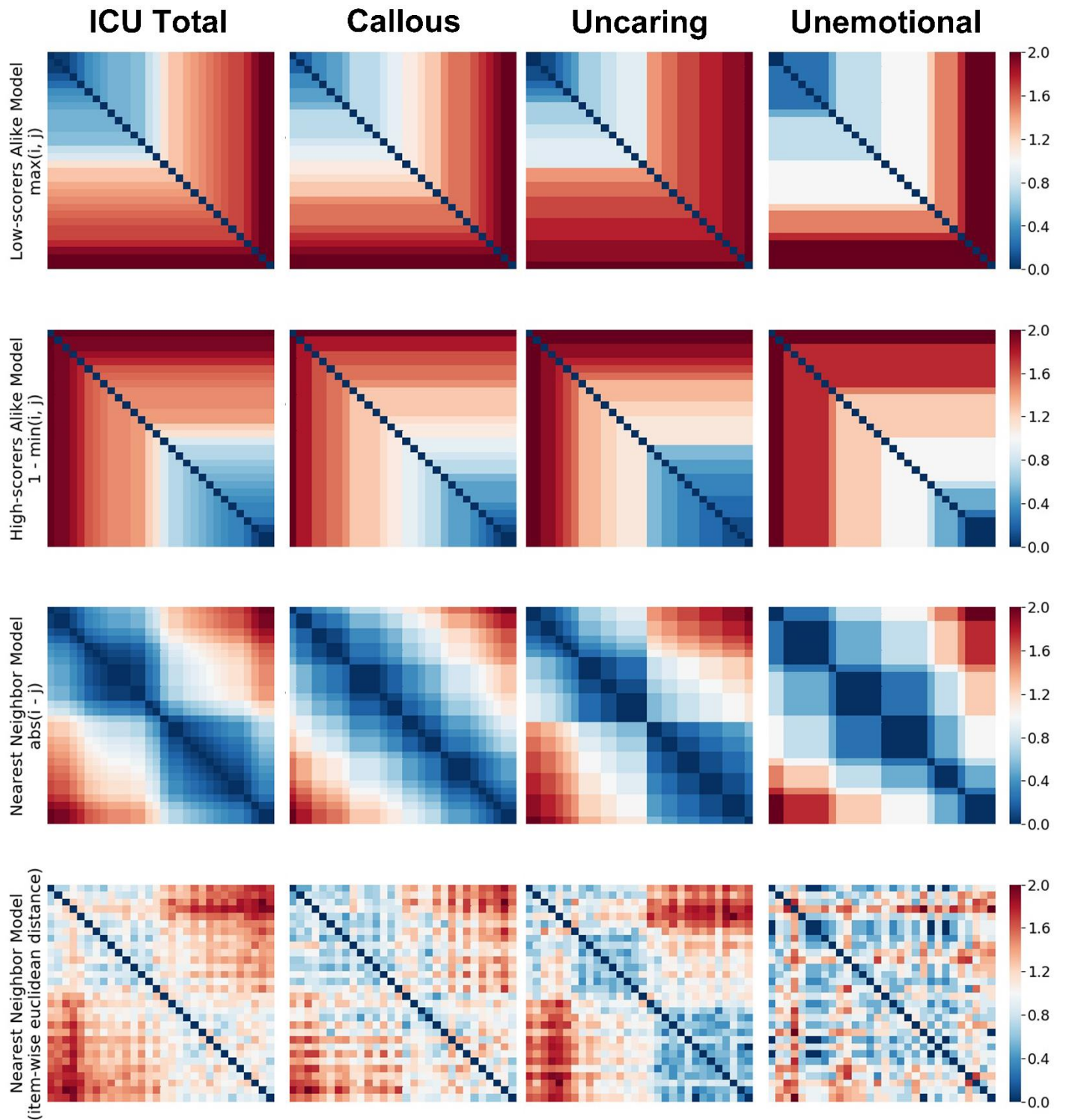
"Afraid Of You" Faces (Left Amygdala)



"Afraid For Self" Faces (Left Amygdala)



**Supplementary Figure 2.** Comparison of 30 subject x 30 subject inter-subject dissimilarity models across ICU subscales (callous, uncaring, unemotional) to inter-subject dissimilarity models based on ICU total scores.



**Note.** Subjects are ordered in same ascending order based on their ICU total scores.