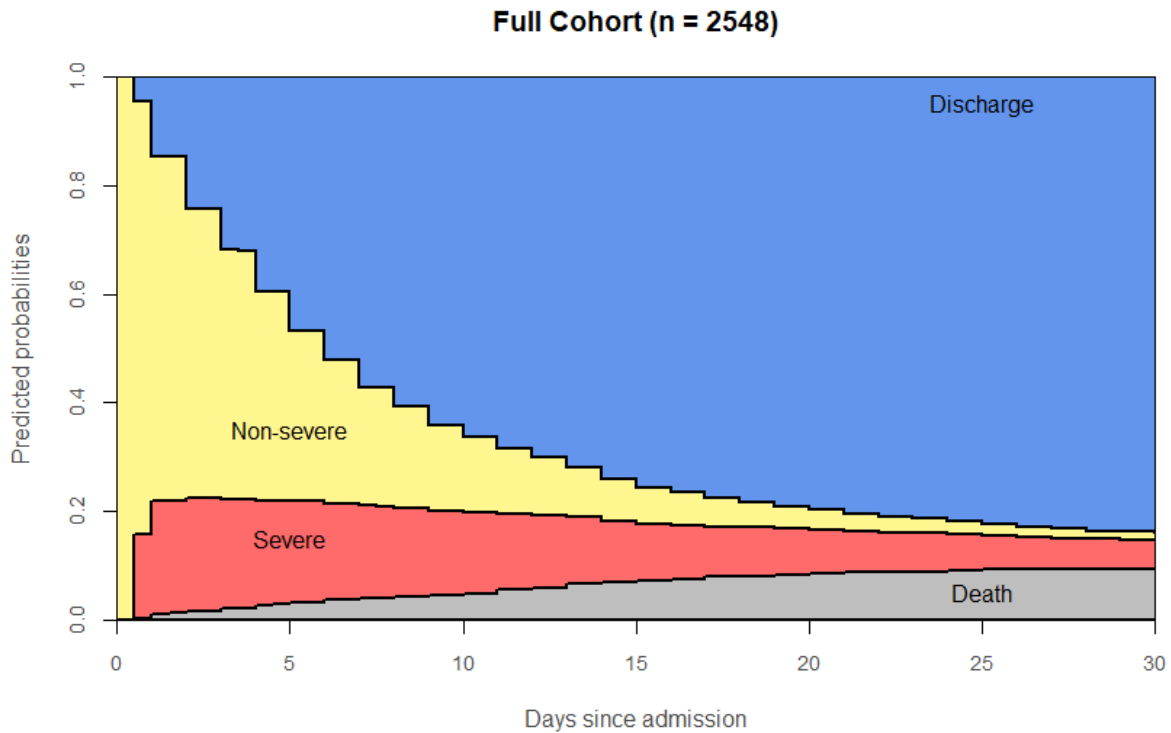
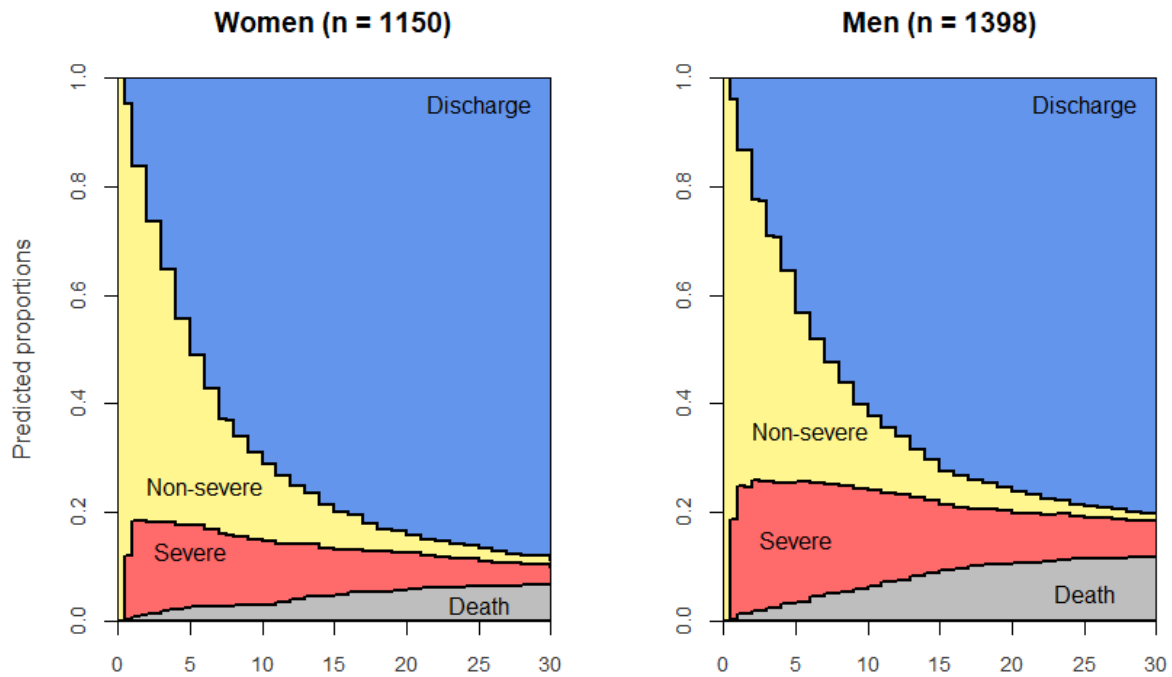


Supplement 1



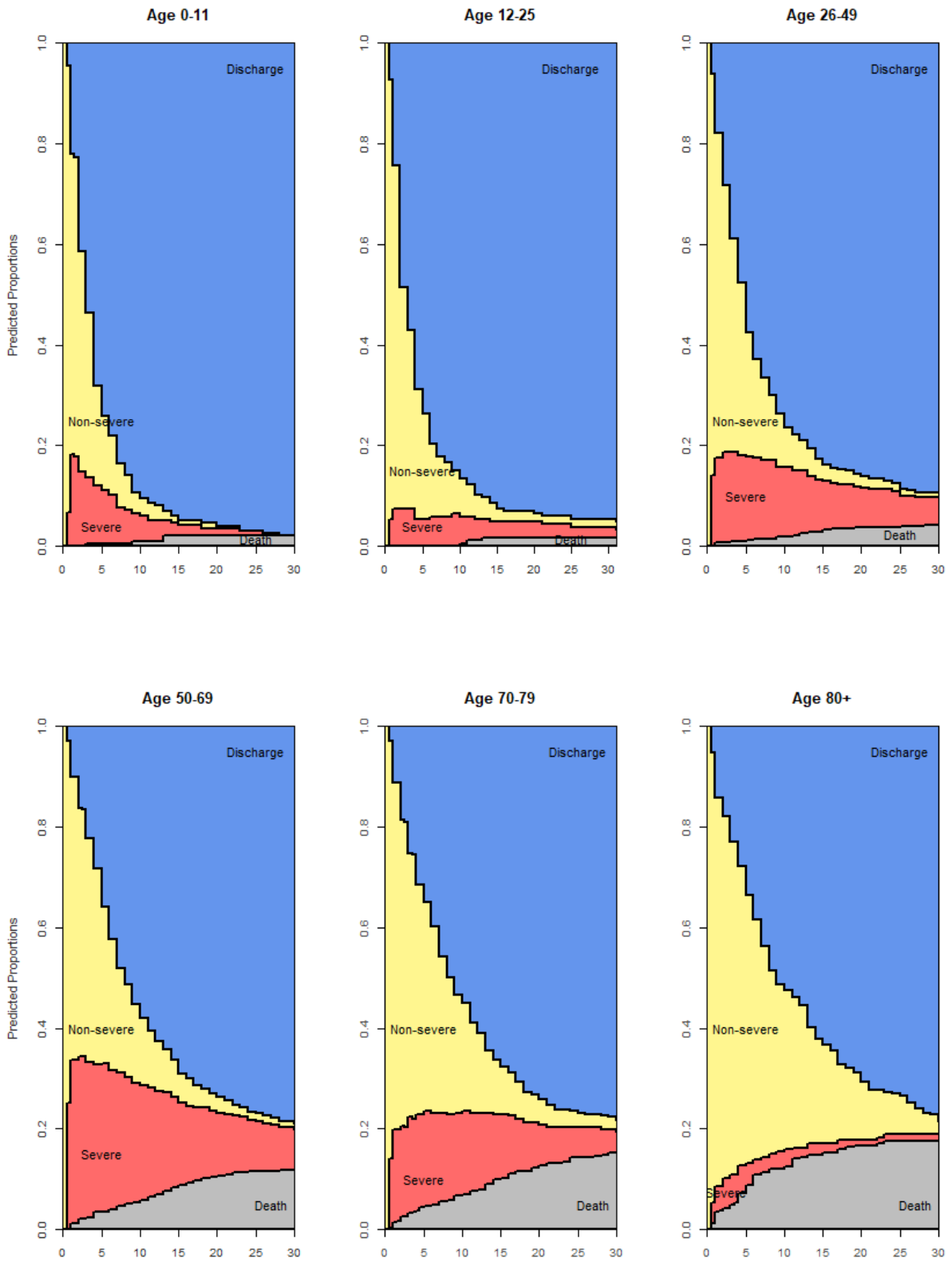
Stacked probability plot for full cohort of 2548 COVID-19 admissions to the University Medical Center Freiburg, Germany. Distances between lines represent proportion of patients in a particular state on day since hospital admission. Discharge: discharged alive from hospital. Non-severe: normal hospital ward. Severe: intensive care unit. Death: death in hospital.

Supplement 2



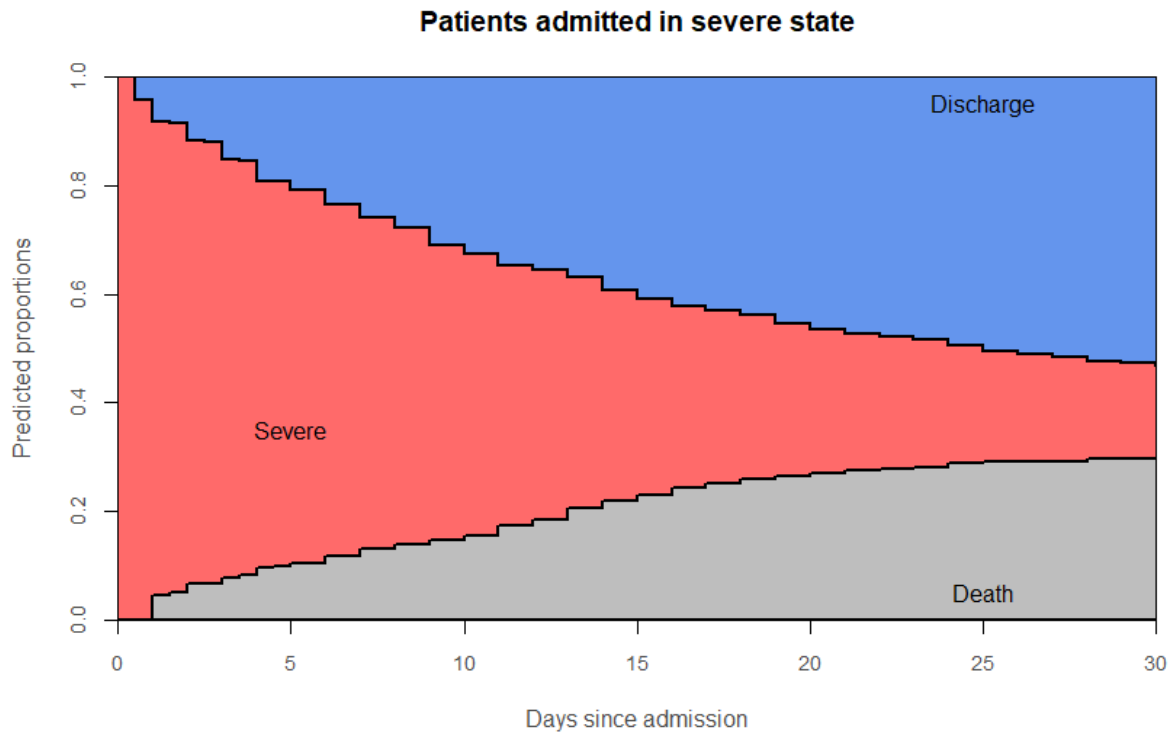
Stacked probability plots stratified by sex of 2548 COVID-19 admissions to the University Medical Center Freiburg, Germany. Distances between lines represent proportion of patients in a particular state on day since hospital admission. Discharge: discharged from hospital. Non-severe: normal hospital ward. Severe: intensive care unit. Death: death in hospital.

Supplement 3



Stacked probability plots stratified by age categories of 2548 COVID-19 admissions from the University Medical Center Freiburg, Germany. Distances between lines represent proportion of patients in a particular state on day since hospital admission. Discharge: discharged alive from hospital. Non-severe: normal hospital ward. Severe: intensive care unit. Death: death in hospital.

Supplement 4



Stacked probability plot for patients admitted into severe state from 2548 COVID-19 admissions from the University Medical Center Freiburg, Germany. Distances between lines represent proportion of patients in a particular state on day since hospital admission. Discharge: discharged alive from hospital. Non-severe: normal hospital ward. Severe: intensive care unit. Death: death in hospital.